

<b>Sewer Infrastructure Advisory Group Meeting Summary</b>	<b>February 7, 2013</b>
	<b>4:00-6:00 p.m.</b>
	<b>Bend Park &amp; Recreation Riverside Community Room</b>
	<b>Note taker: Adele McAfee</b>
<p><b>In Attendance:</b></p> <p><b>Committee Members:</b> Andy High, Casey Roats, Lynn Putnam, Mike Riley, Dale Van Valkenburg, Craig Horrell, Steven Hultberg, Charley Miller, Steve Galash, Stacey Stemach, Bruce Alyward, Sharon Smith, Pam Hardy, Rob von Rohr, Wes Price</p> <p><b>COB Staff:</b> Tom Hickmann, Paul Rheault, Jon Skidmore, Aaron Collett, Colin Stephens, Brian Rankin, Russell Grayson, Carolyn Eagan, Mary Winters</p> <p><b>Consultants:</b> – David Prull (Clearwater Engineering Group), David Stangel (MSA), John Cowan (Optimatics), Jeff Frey (Optimatics)</p> <p><b>Others:</b> Dayna Ralston, Erik Huffman, Jim Frost, John Russell, Jim Lord,</p> <p><b>Facilitators:</b> Libby Barg (Barney &amp; Worth), Clark Worth (Barney &amp; Worth)</p>	

### Action Items

SIAG made the following recommendation for the modeling land use inputs:

- City recommended base assumptions: **OK**
- Development scenario: **Medium Density**
- Special Areas for Additional Capacity: **OSU-Cascade Campus, Central Area, and hospital area** (preliminary decision)

### Agenda Item: Welcome / Introductions / Approve Meeting Notes

Casey Roats moved to accept the meeting notes (with corrections, if received) for the previous 5 meetings (7/19/12, 9/2012, 10/25/12, 11/15/12, 1/17/13). Motion seconded by Lynn Putnam. Motion passed

### Agenda Item: Optimization 101

Presentation included information about how the optimization tool will be used, schedule, and committee input opportunities.

SIAG question: Could this be done quicker?

Answer: There are a number of steps involved that take time.

- All unit costs need to be developed up front and put into the model.
- What technology will be put into the model needs to be determined.
- Cost and life cycle assumptions need to be validated by SIAG.
- Coordination with City Engineering, Operations and Maintenance.

There may be chance to accelerate the schedule after November.

### Agenda Item: Approach to Land Use Inputs in Hydraulic Model

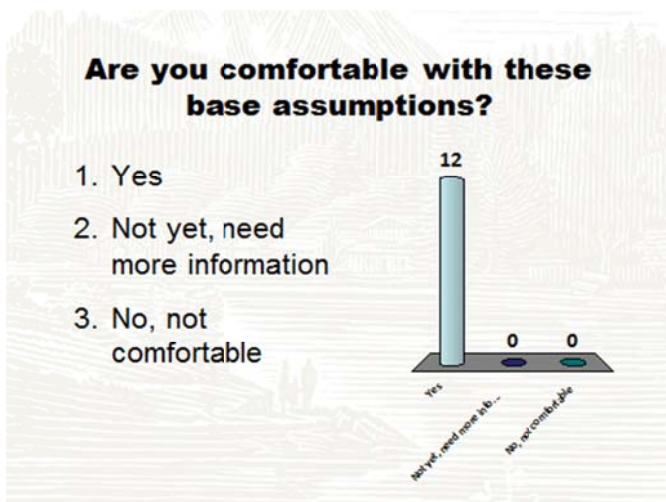
Brian Rankin presented information about land use inputs and asked for SIAG input on three topics: base assumption, development scenarios, and consideration of extra capacity for special areas.

**Base Assumption**

The following base assumptions were presented to SIAG for their consideration:

- **Development on Platted/Approved Lots** – Development densities on individual parcels. *Recommendation:* Assume what was approved by the city is constructed, and that single-lots are developed with a single unit.
- **Rights-of-way** – Amount of right-of-way taken out of large acreages. *Recommendation:* Use 21% from recent research approved by Land Conservation and Development Commission (LCDC).
- **Parks and Schools** – Location of future large parks and elementary, middle, and high schools. *Recommendation:* Use the 2010 School Siting Plan for best estimates and coordinate with Bend-Metro Parks & Recreation District.
- **People per Household** – Factor converts households to people. *Recommendation:* 2.4 people/household is a stable estimate per 2010 US Census.

SIAG conducted a straw poll on the base assumptions. Following the straw poll, SIAG members relayed they were in agreement with the base assumptions.



**Development Scenarios**

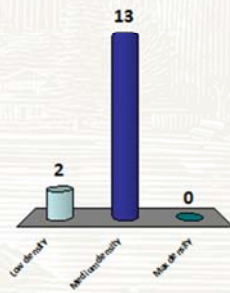
A number of development scenarios were presented to SIAG for their consideration:

Zone	Lowest Density	Medium Density	Highest Density
RL	1.1 dwellings per gross acre	1.7	2.2
RS	2.0	4.7	7.3
RM	7.3	14.5	21.7
RH	21.7	32.4	43

SIAG conducted a straw poll on the development scenarios. Following the straw poll, SIAG members relayed their preference for the medium density scenario.

### Which scenario do you prefer?

1. Low density
2. Medium density
3. Max density

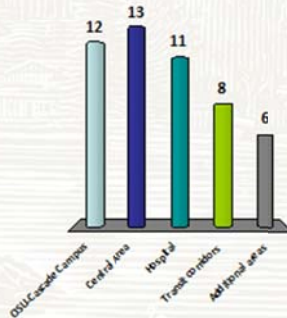


### Capacity for Special Areas

SIAG was asked if there were areas that should be considered for additional capacity (over base assumptions). A straw poll showed support for additional capacity for the OSU-Cascade Campus, Central Area, and hospital area.

### Which special areas should be considered?

1. OSU-Cascade Campus
2. Central Area
3. Hospital
4. Transit corridors
5. Additional areas



A number of additional areas were suggested:

- High water demand area for certain types industry
- Area surrounding OSU (increased residential use)
- Area between COCC and OSU Cascades

Decisions on special areas will be made at the February 21, 2013 SIAG meeting.

**Meeting adjourned 5:58 PM**