

# City of Bend Transportation GO Bond Program

## *Monthly Progress Report*

February 2014



# HDR

In association with the Bend offices of the following firms:



DVA ADVERTISING & PUBLIC RELATIONS

***DevTech Engineering, LLC***  
Site Planning · Civil Engineering

For the latest project information, visit [www.bendoregon.gov/gobond](http://www.bendoregon.gov/gobond)

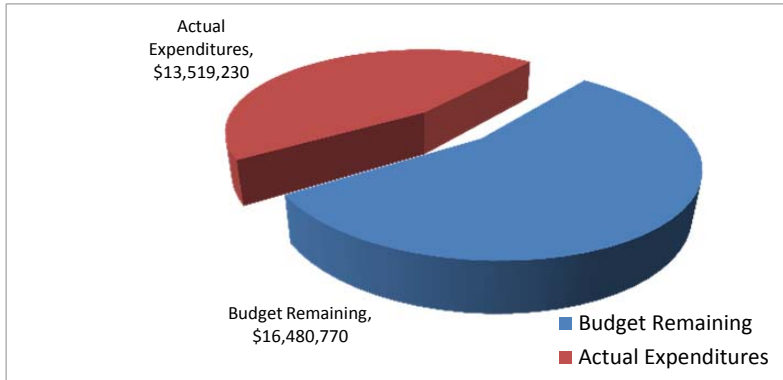
or to leave comments/questions call 541-388-5547 or email [streetbond@ci.bend.or.us](mailto:streetbond@ci.bend.or.us)

## City of Bend Transportation GO Bond Program: Monthly Project Report Number 26: February 2014

### PROGRAM SUMMARY

**COST:**

**City of Bend Transportation GO Bond Program Expenditure Status**



**SCHEDULE:**

	2012				2013				2014				2015			
	Q1	Q2	Q3	Q4	Q1	Q2	Q3	Q4	Q1	Q2	Q3	Q4	Q1	Q2	Q3	Q4
Simpson / Mt. Wash. Intersection	█	█	█	█	Complete											
18th / Empire Intersection	█	█	█	█	Complete											
Powers / Brookwood Intersection	█	█	█	█	Complete											
Reed Mkt: Newberry - 27th St	█	█	█	█	█	█	█	█	█	█	█	█	█	█	█	█
Reed Mkt: Newberry - 3rd Street	█	█	█	█	█	█	█	█	█	█	█	█	█	█	█	█
27th St. Reconstruction	To Be Determined - part of SE Sewer Interceptor project															

Individual Project Status						
MPR Page #	Project #	Proj Name	Overall Status	Project Delivery Step	Design Complete %	Construction Complete %
2	1a	Empire / 18th Intersection	G	Completed	100%	100%
3	1b	Simpson / Mt Washington Intersection	G	Completed	100%	100%
4	1c	Powers / Brookwood Intersection	G	Completed	100%	100%
5	2a	Reed Market: Newberry - 27th	G	Construction	100%	75%
6	2d	Reed Market: Newberry - 3rd	Y	Preliminary Eng.	100%	0%

Definitions for Schedule and Budget Status	
<b>Green</b>	Schedule: Project is no more than 5 days behind schedule. Budget: Project is within budget.
<b>Yellow</b>	Schedule: Project is between 6 and 30 days behind schedule. Budget: Project is between 1% and 10% over budget.
<b>Red</b>	Schedule: Project is over 30 days behind schedule. Budget: Project is more than 10% over budget.



**Project 1a - EMPIRE / 18TH INTERSECTION**

City Project #: ST12CB

Project Phase: Construction

OVERALL	G
SCHEDULE	G
BUDGET	G

City of Bend Project Manager: Nick Arnis  
 Program Mgmt Consultant: HDR Engineering  
 Program Manager: Stephanie Serpico  
 Design Consultant: HDR Engineering  
 Project Manager: Brad Shea  
 Contractor: Knife River

Percent Complete:

Design: 100%

Construction: 100%



**Project Scope Summary**

Upgrade the existing stop controlled intersection to improve safety and reduce congestion. Construct a roundabout, sidewalks, landscaping strips, storm water facilities, illumination, signs and striping to current city standards.

**Project Activities / Accomplishments**

None.

**Schedule Milestone Summary**

Design	Approved	Forecast	Actual
Concept	Feb-12	Feb-12	2/10/2012
30% Submittal	Feb-12	Feb-12	2/29/2012
60% Submittal	Mar-12	Mar-12	3/27/2012
95% Submittal	Apr-12	Apr-12	4/23/2012
Final Submittal	May-12	May-12	5/7/2012
Advertisement Date	May-12	May-12	5/22/2012
Construction Step	Approved	Forecast	Actual
Bid Date	Jun-12	Jun-12	6/12/2012
Contractor NTP	Jun-12	Jun-12	7/6/2012
Construction Complete	Oct-12	Nov-12	11/19/2012

**Upcoming Project Activities**

None.

**Financial Milestone Summary**

Baseline Project Budget - GO Bond only		\$3,188,812	
Current Budget - GO Bond only		\$2,909,010	
Non GO Bond Budget		\$0	
Total Project Budget		<b>\$2,909,010</b>	
Cost Item	Budget	Forecast	Expended
Total	\$2,909,010	\$2,688,455	\$2,626,533

**Issues Being Worked**

None



**Project 1b - SIMPSON / MT WASHINGTON INTERSECTION**

**City Project #:** ST12CC

<b>OVERALL</b>	<b>G</b>
<b>SCHEDULE</b>	<b>G</b>
<b>BUDGET</b>	<b>G</b>

**Project Phase:** Construction

**City of Bend Project Manager:** Nick Arnis  
**Program Mgmt Consultant:** HDR Engineering  
**Program Manager:** Stephanie Serpico  
**Design Consultant:** WH Pacific  
**Project Manager:** Barry Johnson  
**Contractor:** Jack Robinson & Sons

**Percent Complete:** :  
**Design:** 100%  
**Construction:** 100%



**Project Scope Summary**  
 Upgrade the existing stop controlled intersection to improve safety and reduce congestion. Construct a roundabout, sidewalks, landscaping strips, storm water facilities, illumination, signs and striping to current city standards.

**Project Activities / Accomplishments**  
 None.

<b>Schedule Milestone Summary</b>			
<b>Design</b>	<b>Approved</b>	<b>Forecast</b>	<b>Actual</b>
Concept	Jan-12	Jan-12	1/17/2012
30% Submittal	Jan-12	Jan-12	1/26/2012
60% Submittal	Feb-12	Feb-12	2/24/2012
95% Submittal	Apr-12	Apr-12	4/4/2012
Final Submittal	Apr-12	Apr-12	4/23/2012
Advertisement Date	May-12	May-12	5/7/2012
<b>Construction Step</b>	<b>Approved</b>	<b>Forecast</b>	<b>Actual</b>
Bid Date	May-12	May-12	5/29/2012
Contractor NTP	Jun-12	Jun-12	6/20/2012
Construction Complete	Sep-12	Oct-12	10/26/2012

**Upcoming Project Activities**  
 None

<b>Financial Milestone Summary</b>			
Baseline Project Budget - GO Bond only		\$2,742,916	
Current Project Budget - GO Bond only		\$2,518,129	
Non GO Bond Budget		\$514,000	
<b>Total Project Budget</b>		<b>\$3,032,129</b>	
<b>Cost Item</b>	<b>Budget</b>	<b>Forecast</b>	<b>Expended</b>
Total	\$3,032,129	\$2,489,812	\$2,381,425

**Issues Being Worked**  
 None



**Project 1c - POWERS / BROOKSWOOD INTERSECTION**

City Project #: ST12CD

Project Phase: Construction

OVERALL	G
SCHEDULE	G
BUDGET	G

City of Bend Project Manager: Nick Arnis  
 Program Mgmt Consultant: HDR Engineering  
 Program Manager: Stephanie Serpico  
 Design Consultant: DEA  
 Project Manager: Kevin Bracy  
 Contractor: Jack Robinson & Sons

**Percent Complete:**

Design: 100%

Construction: 100%

**Project Scope Summary**

Upgrade the existing stop controlled intersection to improve safety and reduce congestion. Construct a roundabout, sidewalks, landscaping strips, storm water facilities, illumination, signs and striping to current city standards.

**Project Activities / Accomplishments**

None.



**Schedule Milestone Summary**

Design	Approved	Forecast	Actual
Concept	Feb-12	Feb-12	2/10/2012
30% Submittal	Feb-12	Feb-12	2/21/2012
60% Submittal	Mar-12	Mar-12	3/27/2012
95% Submittal	Apr-12	Apr-12	4/23/2012
Final Submittal	May-12	May-12	5/7/2012
Advertisement Date	May-12	May-12	5/22/2012
Construction Step	Approved	Forecast	Actual
Bid Date	Jun-12	Jun-12	6/13/2012
Contractor NTP	Jul-12	Jul-12	6/20/2012
Construction Complete	Oct-12	Nov-12	11/16/2012

**Upcoming Project Activities**

None.

**Financial Milestone Summary**

Baseline Project Budget - GO Bond only	\$2,656,385		
Current Project Budget - GO Bond only	\$2,515,346		
Non GO Bond Budget	\$0		
Total Project Budget	<b>\$2,515,346</b>		
Cost Item	Budget	Forecast	Expended
Total	\$2,515,346	\$2,200,867	\$2,142,895

**Issues Being Worked**

None.



**City of Bend Transportation GO Bond Program: Monthly Project Report  
Number 26: February 2014**

**Project 2a - REED MARKET: NEWBERRY - 27th**

City Project #: ST12CE

Project Phase: Construction

OVERALL	G
SCHEDULE	G
BUDGET	G

City of Bend Project Manager: Nick Arnis  
 Program Mgmt Consultant: HDR Engineering  
 Program Manager: Stephanie Serpico  
 Design Consultant: Devtech  
 Project Manager: Chris Chambers  
 Contractor: Jack Robinson & Sons

**Percent Complete:**

Design: 100%  
 Construction: 75%

**Project Scope Summary**

Upgrade the existing roadway to current City of Bend standards to a major arterial. This includes a two travel lanes and a continuous center turn lane, 6 foot shoulders/bike lanes, separated 6 foot sidewalks and landscape strip. Construct new storm water facilities, signing, illumination, retaining walls and striping.



**Project Activities / Accomplishments**

Finished the construction of phase 2 and opened the entire section of Reed Market to traffic.

**Schedule Milestone Summary**

Design	Approved	Forecast	Actual
Concept	May-12	May-12	4/26/2012
30% Submittal	May-12	May-12	6/11/2012
60% Submittal	Aug-12	Oct-12	10/18/2012
95% Submittal	Nov-12	Jan-13	1/25/2013
Final Submittal	Mar-13	Feb-13	2/6/2013
Advertisement Date	Mar-13	Mar-13	3/18/2013
Construction Step	Approved	Forecast	Actual
Bid Date	Apr-13	Apr-13	4/16/2013
Contractor NTP	May-13	May-13	5/13/2013
Construction Complete	Nov-13	May-14	

**Upcoming Project Activities**

The project is shut down for the winter. The next phase of the project will begin in February 2014.

**Financial Milestone Summary**

Baseline Project Budget - GO Bond only	\$6,073,962		
Current Project Budget - GO Bond only	\$6,134,544		
Non GO Bond Budget	\$0		
<b>Total Project Budget</b>	<b>\$6,134,544</b>		
Cost Item	Budget	Forecast	Expended
Total	\$6,134,544	\$5,027,003	\$3,818,504

**Issues Being Worked**

The addition of a gravity sewer line on the east end of the project.



**Project 2d - REED MARKET: NEWBERRY TO 3rd STREET**

City Project #'s: ST12CJ

Project Phase: Preliminary Eng. Class 3

OVERALL	G
SCHEDULE	Y
BUDGET	G

City of Bend Project Manager: Nick Arnis  
 Program Mgmt Consultant: HDR Engineering  
 Program Manager: Stephanie Serpico  
 Design Consultant: HWA / CW  
 Project Manager: Mark Douglas / Jim Lord  
 Contractor: TBD

**Percent Complete:**  
 Design: 100%  
 Construction: 0%



**Project Scope Summary**

Upgrade the existing roadway to current City of Bend standards to a major arterial. This includes a two travel lanes and a continuous center turn lane, 6 foot shoulders/bike lanes, separated 6 foot sidewalks and landscape strip. Construct new storm water facilities, signing, lighting, retaining walls and striping. Upgrade the existing the railroad crossing. Realign American Lane to the west of the current location and reconstruct a bridge at the new location. At the intersection of Reed Market and 15th Street, upgrade the existing signalized intersection to improve safety and reduce congestion.



**Prior Project Activities / Accomplishments**

Submitted final documents to the city for review and preparation of advertising.

**Upcoming Project Activities**

Continue right of way negotiations. Present approved construction staging options to public.

**Schedule Milestone Summary**

Design	Approved	Forecast	Actual
Concept	Jun-12	Jun-12	Jul-12
30% Submittal	Jul-12	Nov-12	11/28/2012
60% Submittal	Oct-12	Mar-13	4/9/2013
95% Submittal	Feb-13	Jul-13	7/8/2013
Final Submittal	Feb-13	Dec-13	12/18/2013
Advertisement Date	Aug-13	May-14	
Construction Step	Approved	Forecast	Actual
Bid Date	Sep-13	Jun-14	
Contractor NTP	Oct-13	Jun-14	
Construction Complete	Nov-14	Sep-15	

**Issues Being Worked**

Project bidding schedule. There are a few right of way negotiations that are holding up the current project schedule. A new let date needs to be established based on these properties. Construction staging, utility relocations at the intersection of Reed Market and 15th Street, coordinating the railroad crossing construction with BNSF.

**Financial Milestone Summary : Reed Market: Newberry - 3rd Street**

Baseline Project Budget - GO Bond only	\$13,912,422		
Current Project Budget - GO Bond only	\$14,497,470		
Non GO Bond Budget	\$0		
<b>Total Project Budget</b>	<b>\$14,497,470</b>		
Cost Item	Budget	Forecast	Expended
Total	\$14,497,470	\$13,597,470	\$2,620,117



**City of Bend Transportation GO Bond Program: Monthly Project Report  
Number 26: February 2014**

**Appendix 1: GO BOND FUNDED COST REPORT**

GO Bond Project-Specific Components (See Appendix 2 for Comprehensive Funding Report)							
Project Specific Element	Baseline Budget	Current Approved Budget (as of 7/1/2013)	Approved Budget Changes (as of 7/1/2013)	Class Level Current Estimate	January 2014 Incurred Expenditures	Incurred Expenditures to Date	
<b>Project 1a:</b> <b>Empire / 18th Intersection</b>	Consulting	\$ 851,663	\$ 662,010		\$ 620,903	\$ 350	\$ 602,296
	Program Mgmt (GEC)	\$ 364,556	\$ 119,137	\$ (245,419)	\$ 119,137	\$ -	\$ 119,137
	Design Engineering	\$ 200,000	\$ 255,767	\$ 55,767	\$ 255,767	\$ -	\$ 255,767
	Const Eng & Mgmt	\$ 287,107	\$ 287,107	\$ -	\$ 246,000	\$ 350	\$ 227,392
	Internal City	\$ 170,002	\$ 79,852	\$ (90,150)	\$ 79,852	\$ 230	\$ 60,817
<b>Empire / 18th Intersection</b>	ROW / Utility Reloc.	\$ 150,000	\$ 150,000	\$ -	\$ 117,700	\$ -	\$ 117,700
	Construction & Contingency	\$ 2,017,148	\$ 2,017,148	\$ -	\$ 1,870,000	\$ -	\$ 1,845,720
<b>Proj 1a Subtotal</b>	<b>\$ 3,188,812</b>	<b>\$ 2,909,010</b>	<b>\$ (90,150)</b>	<b>\$ 2,688,455</b>	<b>\$ 580</b>	<b>\$ 2,626,533</b>	
<b>Project 1b:</b> <b>Simpson / Mt Washington Intersection</b>	Consulting	\$ 799,867	\$ 665,227		\$ 579,716	\$ 525	\$ 559,697
	Program Mgmt (GEC)	\$ 364,556	\$ 119,137	\$ (245,419)	\$ 119,137	\$ -	\$ 119,137
	Design Engineering	\$ 100,000	\$ 210,779	\$ 110,779	\$ 196,579	\$ -	\$ 196,579
	Const Eng & Mgmt	\$ 335,311	\$ 335,311	\$ -	\$ 264,000	\$ 525	\$ 243,980
	Internal City	\$ 170,000	\$ 79,852	\$ (90,148)	\$ 79,852	\$ 230	\$ 56,668
<b>Simpson / Mt Washington Intersection</b>	ROW / Utility Reloc.	\$ 175,000	\$ 175,000	\$ -	\$ 88,274	\$ -	\$ 88,198
	Construction & Contingency	\$ 1,598,050	\$ 1,598,050	\$ -	\$ 1,480,000	\$ -	\$ 1,405,526
<b>Proj 1b Subtotal</b>	<b>\$ 2,742,916</b>	<b>\$ 2,518,129</b>	<b>\$ (224,788)</b>	<b>\$ 2,227,842</b>	<b>\$ 755</b>	<b>\$ 2,110,089</b>	
<b>Project 1c:</b> <b>Powers / Brookwood Intersection</b>	Consulting	\$ 811,599	\$ 760,708		\$ 708,765	\$ 350	\$ 688,742
	Program Mgmt (GEC)	\$ 364,556	\$ 119,137	\$ (245,419)	\$ 119,137	\$ -	\$ 119,137
	Design Engineering	\$ 160,000	\$ 354,528	\$ 194,528	\$ 354,528	\$ -	\$ 354,528
	Const Eng & Mgmt	\$ 287,043	\$ 287,043	\$ -	\$ 235,100	\$ 350	\$ 215,076
	Internal City	\$ 170,000	\$ 79,852	\$ (90,148)	\$ 79,852	\$ 230	\$ 53,766
<b>Powers / Brookwood Intersection</b>	ROW / Utility Reloc.	\$ 245,000	\$ 245,000	\$ -	\$ 80,250	\$ -	\$ 80,438
	Construction & Contingency	\$ 1,429,787	\$ 1,429,787	\$ -	\$ 1,332,000	\$ -	\$ 1,319,949
<b>Proj 1c Subtotal</b>	<b>\$ 2,656,385</b>	<b>\$ 2,515,346</b>	<b>\$ (141,039)</b>	<b>\$ 2,200,867</b>	<b>\$ 580</b>	<b>\$ 2,142,895</b>	
<b>Projects 1a - 1c Subtotal:</b>	Consulting	\$ 2,463,128	\$ 2,087,945	\$ -	\$ 1,909,385	\$ 1,226	\$ 1,850,734
	Program Mgmt (GEC)	\$ 1,093,667	\$ 357,410	\$ -	\$ 357,411	\$ -	\$ 357,411
	Design Engineering	\$ 460,000	\$ 821,074	\$ -	\$ 806,874	\$ -	\$ 806,874
	Est Const Eng & Mgmt	\$ 909,461	\$ 909,461	\$ -	\$ 745,100	\$ 1,226	\$ 686,449
	Internal City	\$ 510,001	\$ 239,555	\$ -	\$ 239,556	\$ 690	\$ 171,251
	ROW / Utility Reloc.	\$ 570,000	\$ 570,000	\$ -	\$ 286,224	\$ -	\$ 286,336
	Construction & Contingency	\$ 5,044,985	\$ 5,044,985	\$ -	\$ 4,682,000	\$ -	\$ 4,571,195
<b>Proj 1a - 1c Subtotal</b>	<b>\$ 8,588,114</b>	<b>\$ 7,942,485</b>	<b>\$ -</b>	<b>\$ 7,117,165</b>	<b>\$ 1,916</b>	<b>\$ 6,879,516</b>	
<b>Project 2a:</b> <b>Reed Market: Newberry - 27th</b>	Consulting	\$ 1,196,172	\$ 1,167,226		\$ 1,167,226	\$ 13,455	\$ 1,100,949
	Program Mgmt (GEC)	\$ 364,556	\$ 186,994	\$ (177,562)	\$ 186,994	\$ -	\$ 186,994
	Design Engineering	\$ 330,000	\$ 478,616	\$ 148,616	\$ 478,616	\$ -	\$ 478,616
	Est Const Eng & Mgmt	\$ 501,616	\$ 501,616	\$ -	\$ 501,616	\$ 13,455	\$ 435,338
	Internal City	\$ 160,000	\$ 249,527	\$ 89,527	\$ 249,527	\$ 3,690	\$ 121,791
<b>Reed Market: Newberry - 27th</b>	ROW / Utility Reloc.	\$ 900,000	\$ 44,100	\$ -	\$ 75,000	\$ -	\$ 31,975
	Construction & Contingency	\$ 3,817,791	\$ 4,673,691	\$ -	\$ 3,535,251	\$ 8,038	\$ 2,563,789
<b>Proj 2a Subtotal</b>	<b>\$ 6,073,962</b>	<b>\$ 6,134,544</b>	<b>\$ 60,582</b>	<b>\$ 5,027,004</b>	<b>\$ 25,183</b>	<b>\$ 3,818,504</b>	
<b>Project 2d:</b> <b>Reed Mkt: Newberry - 3rd Street</b>	Consulting	\$ 2,880,814	\$ 3,284,942		\$ 3,284,942	\$ 13,982	\$ 1,836,185
	Program Mgmt (GEC)	\$ 729,112	\$ 506,380	\$ (222,732)	\$ 506,380	\$ -	\$ 461,553
	Design Engineering	\$ 720,000	\$ 1,346,861	\$ 626,861	\$ 1,346,861	\$ 3,073	\$ 1,349,716
	Est Const Eng & Mgmt	\$ 1,431,702	\$ 1,431,702	\$ -	\$ 1,431,702	\$ 10,909	\$ 24,916
	Internal City	\$ 324,499	\$ 505,418	\$ 180,919	\$ 505,419	\$ 19,126	\$ 153,995
<b>Reed Mkt: Newberry - 3rd Street</b>	ROW / Utility Reloc.	\$ 1,800,000	\$ 1,800,000	\$ -	\$ 900,000	\$ 3,560	\$ 397,598
	Construction & Contingency	\$ 8,907,109	\$ 8,907,109	\$ -	\$ 8,907,109	\$ -	\$ 232,339
<b>Proj 2c Subtotal</b>	<b>\$ 13,912,422</b>	<b>\$ 14,497,470</b>	<b>\$ 585,048</b>	<b>\$ 13,597,470</b>	<b>\$ 36,668</b>	<b>\$ 2,620,117</b>	
<b>Project 2a &amp; 2d Subtotal:</b>	Consulting	\$ 4,076,985	\$ 4,452,168	\$ -	\$ 4,452,168	\$ 27,437	\$ 2,937,133
	Program Mgmt (GEC)	\$ 1,093,667	\$ 693,374	\$ -	\$ 693,374	\$ -	\$ 648,547
	Design Engineering	\$ 1,050,000	\$ 1,825,477	\$ -	\$ 1,825,477	\$ 3,073	\$ 1,828,332
	Est Const Eng & Mgmt	\$ 1,933,318	\$ 1,933,318	\$ -	\$ 1,933,318	\$ 24,364	\$ 460,254
	Internal City	\$ 484,499	\$ 754,945	\$ -	\$ 754,946	\$ 22,816	\$ 275,786
	ROW / Utility Reloc.	\$ 2,700,000	\$ 1,844,100	\$ -	\$ 975,000	\$ 3,560	\$ 429,573
<b>Proj 2a - 2c Subtotal</b>	<b>\$ 19,986,384</b>	<b>\$ 20,632,013</b>	<b>\$ -</b>	<b>\$ 18,624,475</b>	<b>\$ 61,851</b>	<b>\$ 6,438,621</b>	
<b>Project 3:</b> <b>27th Street Reconstruction</b>	Consulting	\$ -	\$ -	\$ -	\$ -	\$ -	\$ -
	Internal City	\$ -	\$ -	\$ -	\$ -	\$ -	\$ -
	Design Engineering	\$ -	\$ -	\$ -	\$ -	\$ -	\$ -
	ROW / Utility Reloc.	\$ -	\$ -	\$ -	\$ -	\$ -	\$ -
	Construction & Contingency	\$ 1,000,000	\$ 1,000,000	\$ -	\$ 1,000,000	\$ -	\$ -
<b>Proj 3 Subtotal</b>	<b>\$ 1,000,000</b>	<b>\$ 1,000,000</b>	<b>\$ -</b>	<b>\$ 1,000,000</b>	<b>\$ -</b>	<b>\$ -</b>	
<b>All Projects:</b>	Consulting	\$ 6,540,113	\$ 6,540,113	\$ -	\$ 6,361,551	\$ 28,663	\$ 4,787,867
	Program Mgmt (GEC)	\$ 2,187,336	\$ 1,050,785	\$ -	\$ 1,050,784	\$ -	\$ 1,005,958
	Design Engineering	\$ 1,510,000	\$ 2,646,551	\$ -	\$ 2,632,350	\$ 3,073	\$ 2,635,207
	Est Const Eng & Mgmt	\$ 2,842,779	\$ 2,842,779	\$ -	\$ 2,678,418	\$ 25,590	\$ 1,146,703
	Internal City	\$ 994,500	\$ 994,500	\$ -	\$ 994,502	\$ 23,506	\$ 447,037
	ROW / Utility Reloc.	\$ 3,270,000	\$ 2,414,100	\$ -	\$ 1,261,224	\$ 3,560	\$ 715,909
	Construction & Contingency	\$ 18,769,885	\$ 19,625,785	\$ -	\$ 18,124,360	\$ 8,038	\$ 7,367,323
	Bond Cost	\$ 425,500	\$ 425,500	\$ -	\$ 425,500	\$ -	\$ 180,906
	Miscellaneous Program Costs	\$ -	\$ -	\$ -	\$ -	\$ -	\$ 20,187
<b>All Projects Subtotal</b>	<b>\$ 30,000,000</b>	<b>\$ 30,000,000</b>	<b>\$ -</b>	<b>\$ 27,167,137</b>	<b>\$ 63,768</b>	<b>\$ 13,519,230</b>	
<b>GO Bond Funding Reserve</b>	<b>\$ -</b>	<b>\$ -</b>	<b>\$ -</b>	<b>\$ 2,832,862</b>			

Notes:

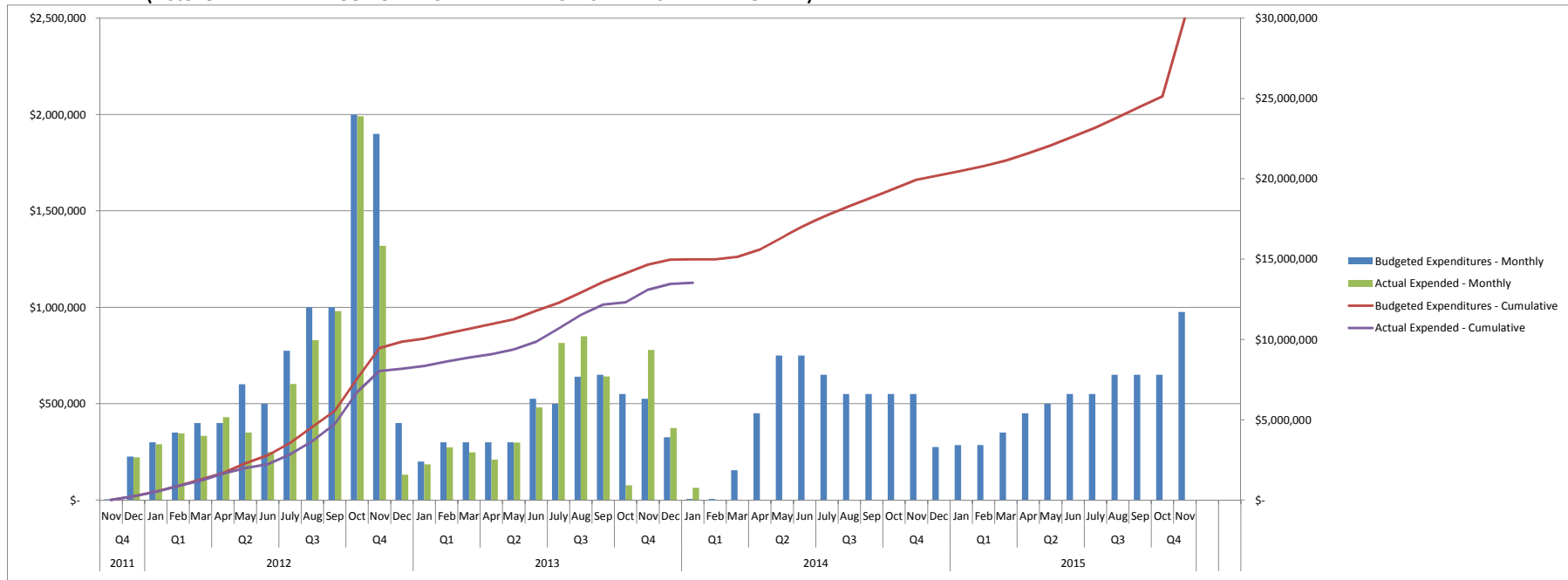
- Bonding Budget and Fees is not included in the Cost Summary Report per direction of City.
- "Approved Budget" and "Expenditure" data is based on information through January 31, 2014.
- Only City of Bend GO Bond Funded elements are represented in the Appendix 1 data.
- Final baseline budget information will be a result of the Design Validation process completed by March 1, 2012.
- Miscellaneous program costs include newspaper advertisements, room rentals, etc.





**Appendix 3: PROGRAM CASH FLOW (EXPENDITURE) CURVE**

(Note: ONLY PLANNED GO BOND FUND EXPENDITURES REPRESENTED IN GRAPH)



PROGRAM MAP

