

Bend Transportation Options Program Bike + Walk

Developing the System Implementation Strategy

2014



DRAFT STRATEGY - ARE WE ON THE RIGHT TRACK?

WHY ARE WE HERE?



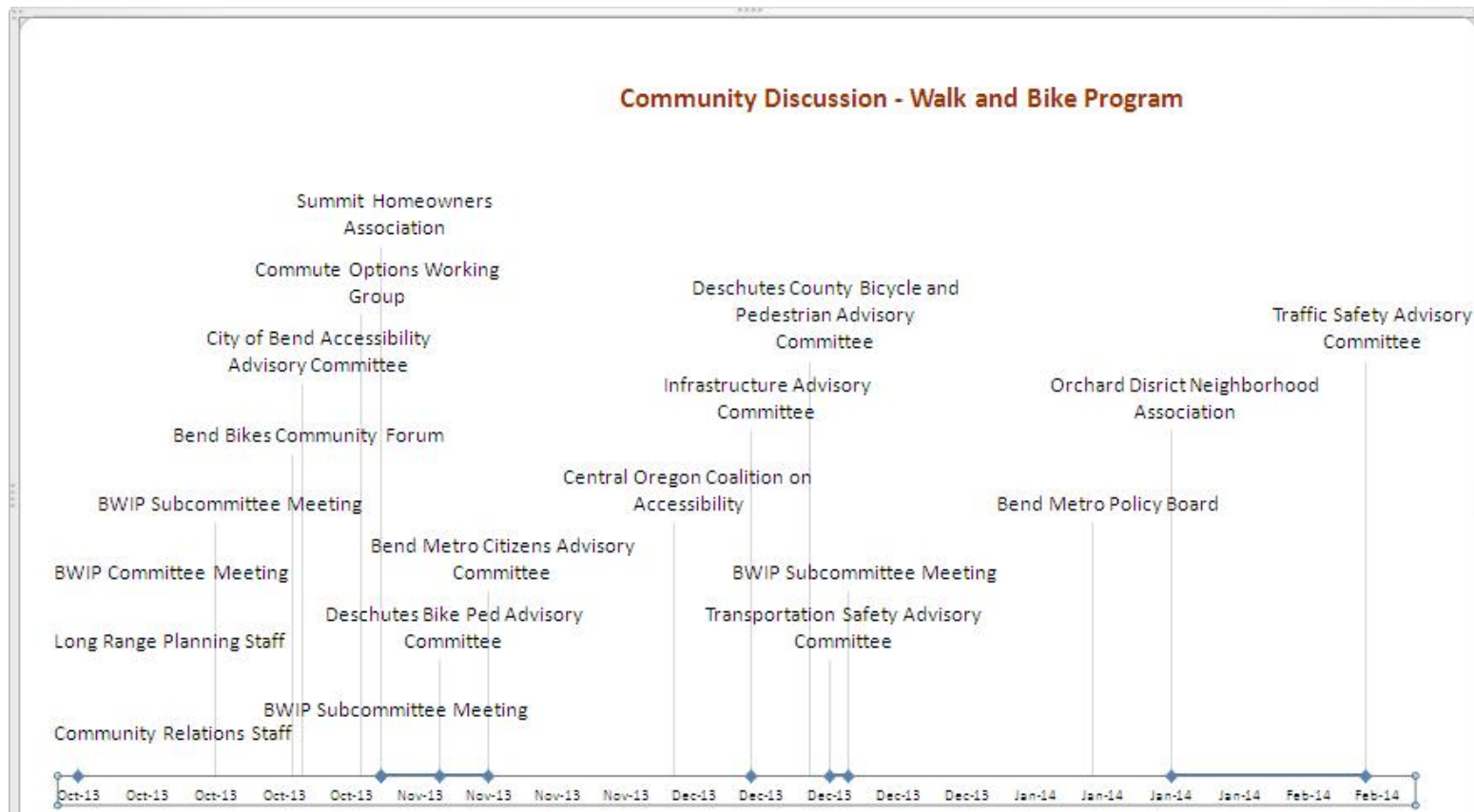
Implement TSP
Goals and
Objectives

Create CIP project
lists for Biking
and Walking

SAFETY – ACCESS – FUN – EASE

DRAFT STRATEGY - ARE WE ON THE RIGHT
TRACK?

Successful active transportation planning requires more than just bike lanes, though; it requires smart planning from the ground up.



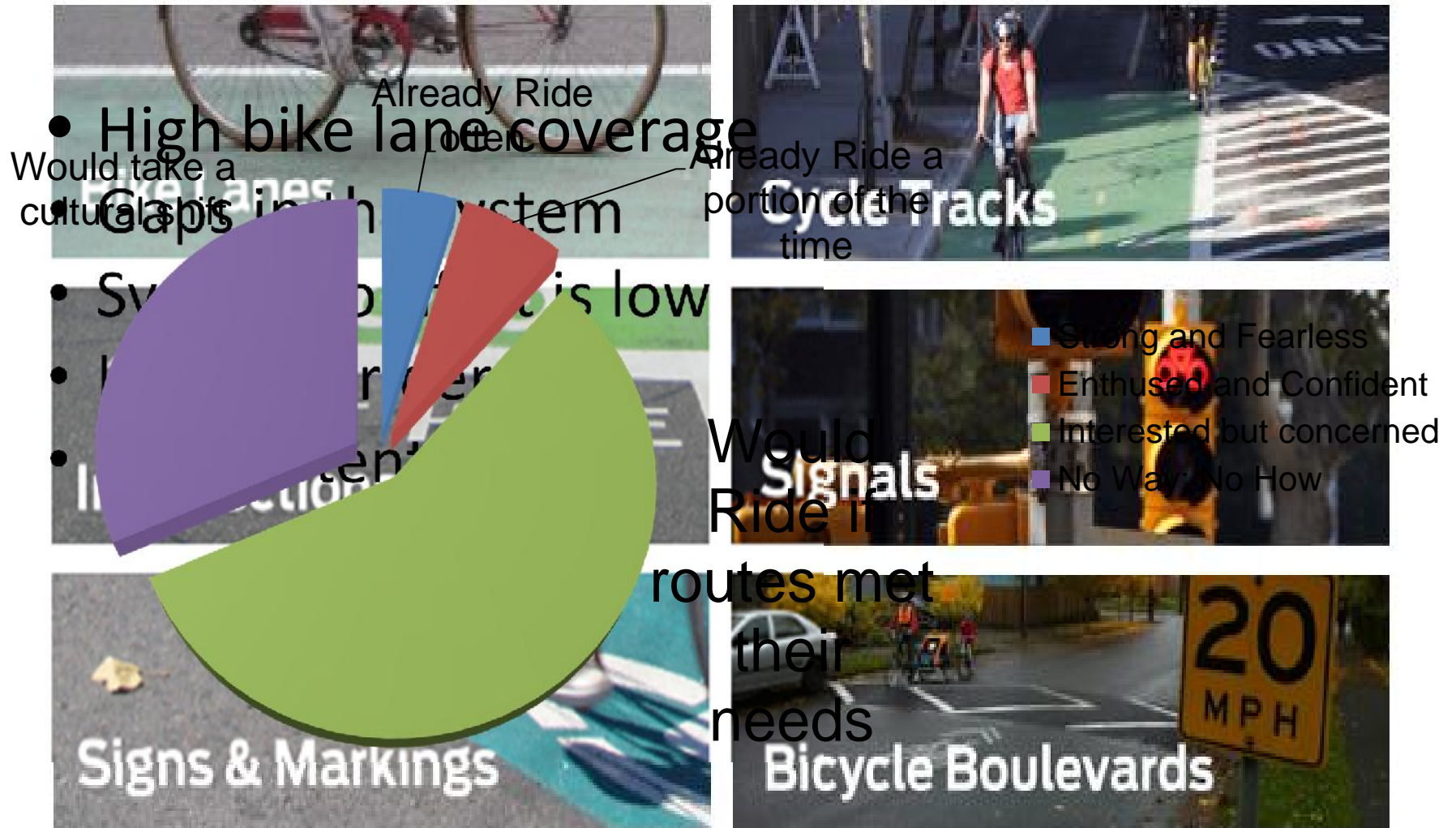
BIKE SYSTEM

Findings and Proposed System Implementation Plan

DRAFT STRATEGY - ARE WE ON THE RIGHT
TRACK?

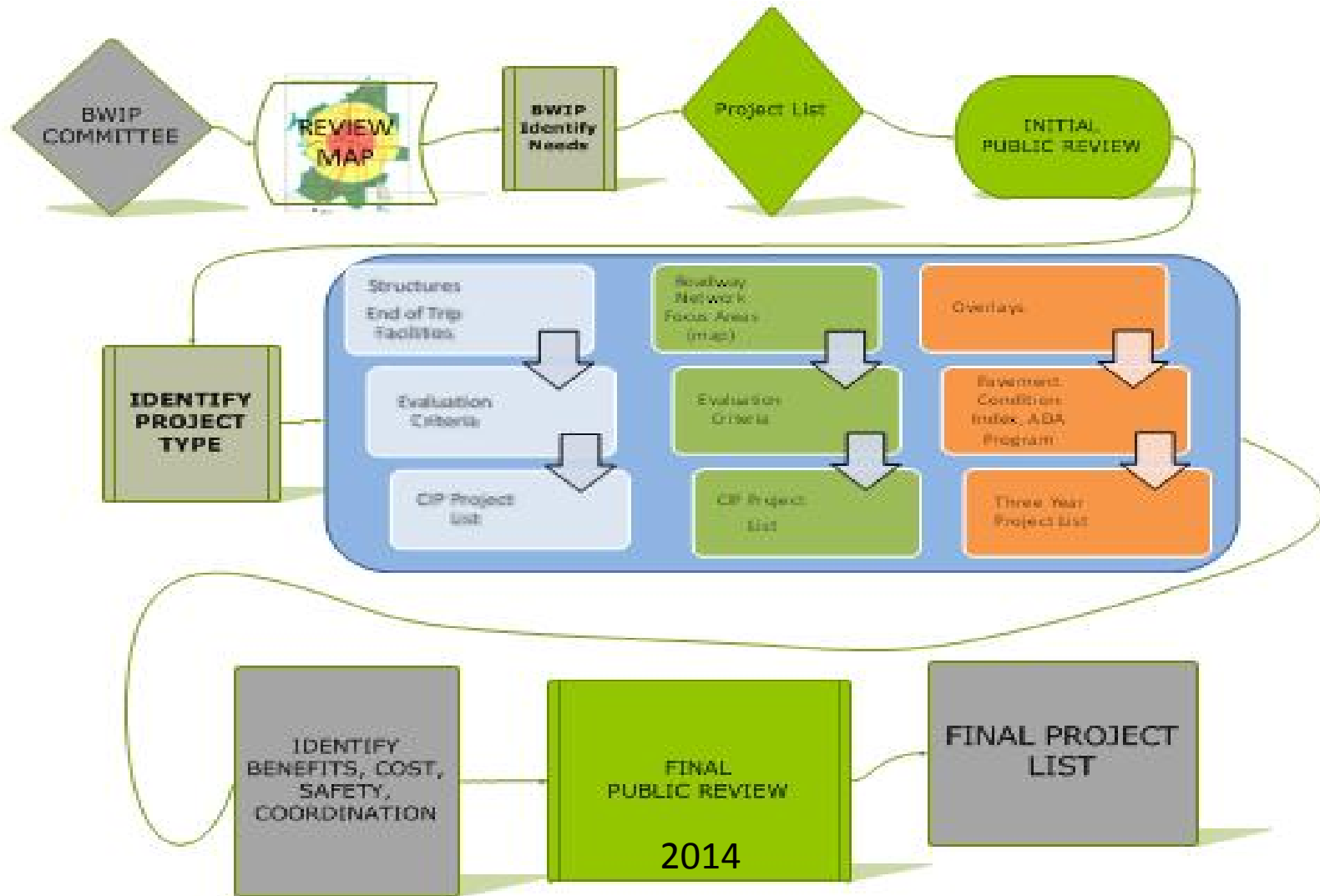
OPPORTUNITY TO HAVE MORE PEOPLE ON BIKES

This is what we know



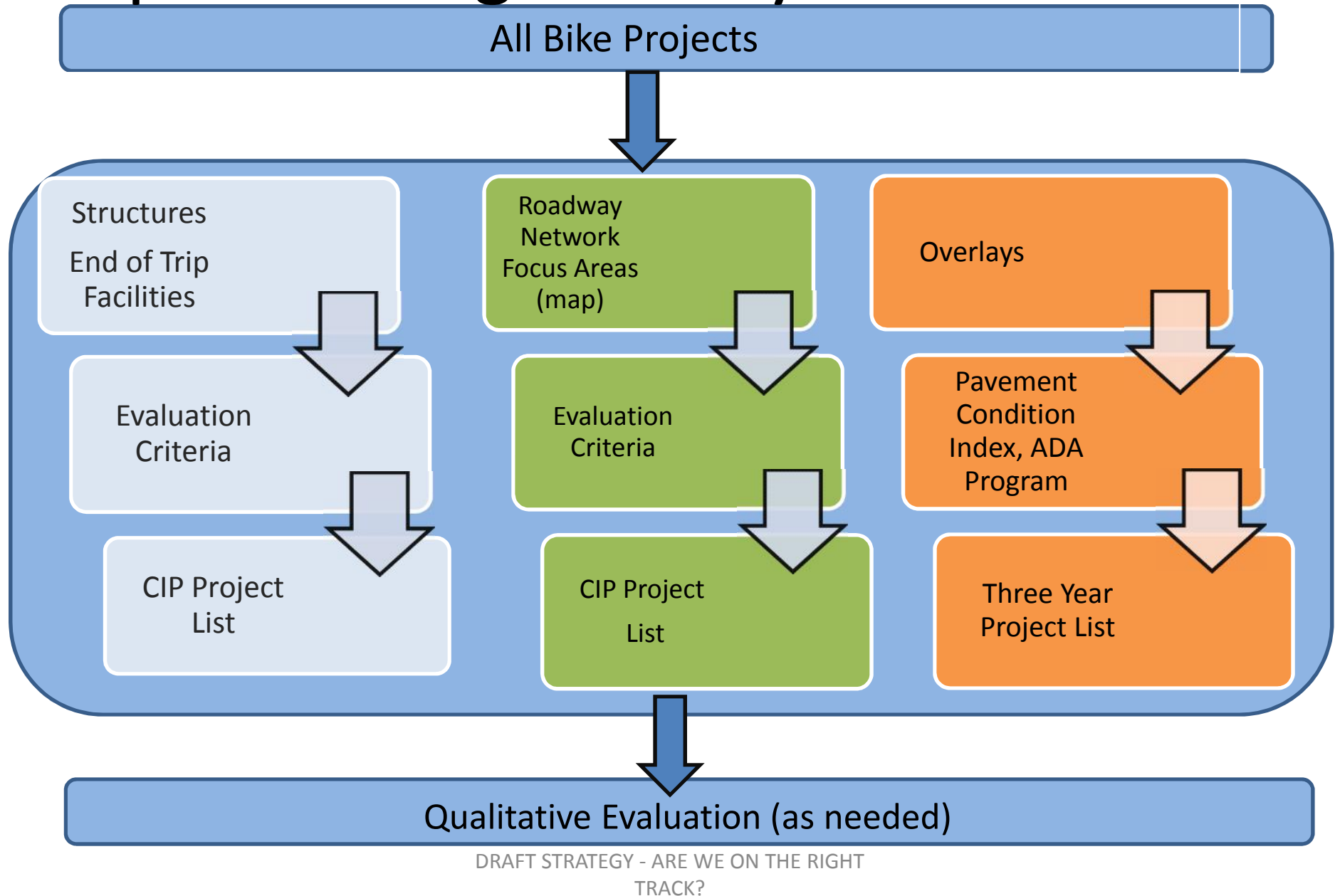
DRAFT STRATEGY - ARE WE ON THE RIGHT TRACK?

Process - Bike Projects



DRAFT STRATEGY - ARE WE ON THE RIGHT TRACK?

Implementing the Bicycle Network



Structures/Trip Facilities

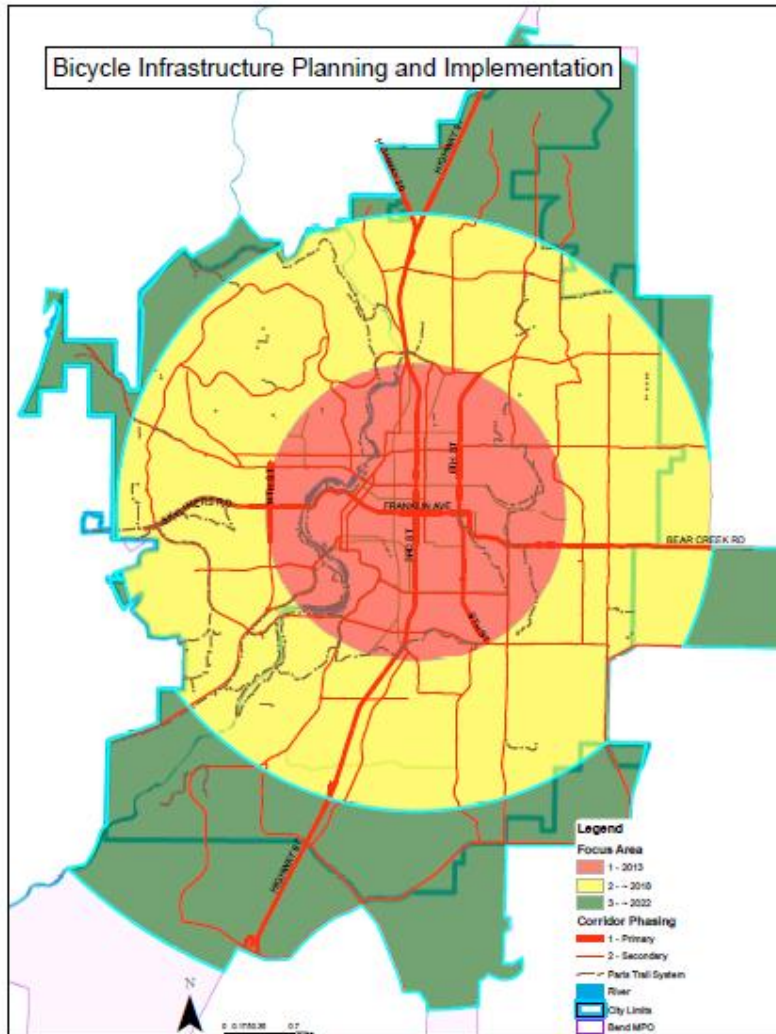
BRIDGES

- Drake Park (footbridge)
- 3rd Street (near Fred Meyer)
- Brosterhous Road (near 3rd Street)
- Purcell Boulevard (near Pine Nursery Park)

TRIP FACILITIES

- Bike Parking downtown
- Way Finding signage

Roadway Network Focus Areas



Focus Area #1 – The Central Core

- 3rd Street
- 8th/9th Street
- 14th Street
- Franklin Avenue (Galveston-Franklin-Bear Creek)
- 24 total arterial or collector corridors

Focus Area #2 – Mid Town

- Purcell Boulevard
- Butler Market
- Brookswood Boulevard
- Brosterhus Road
- 27th Street

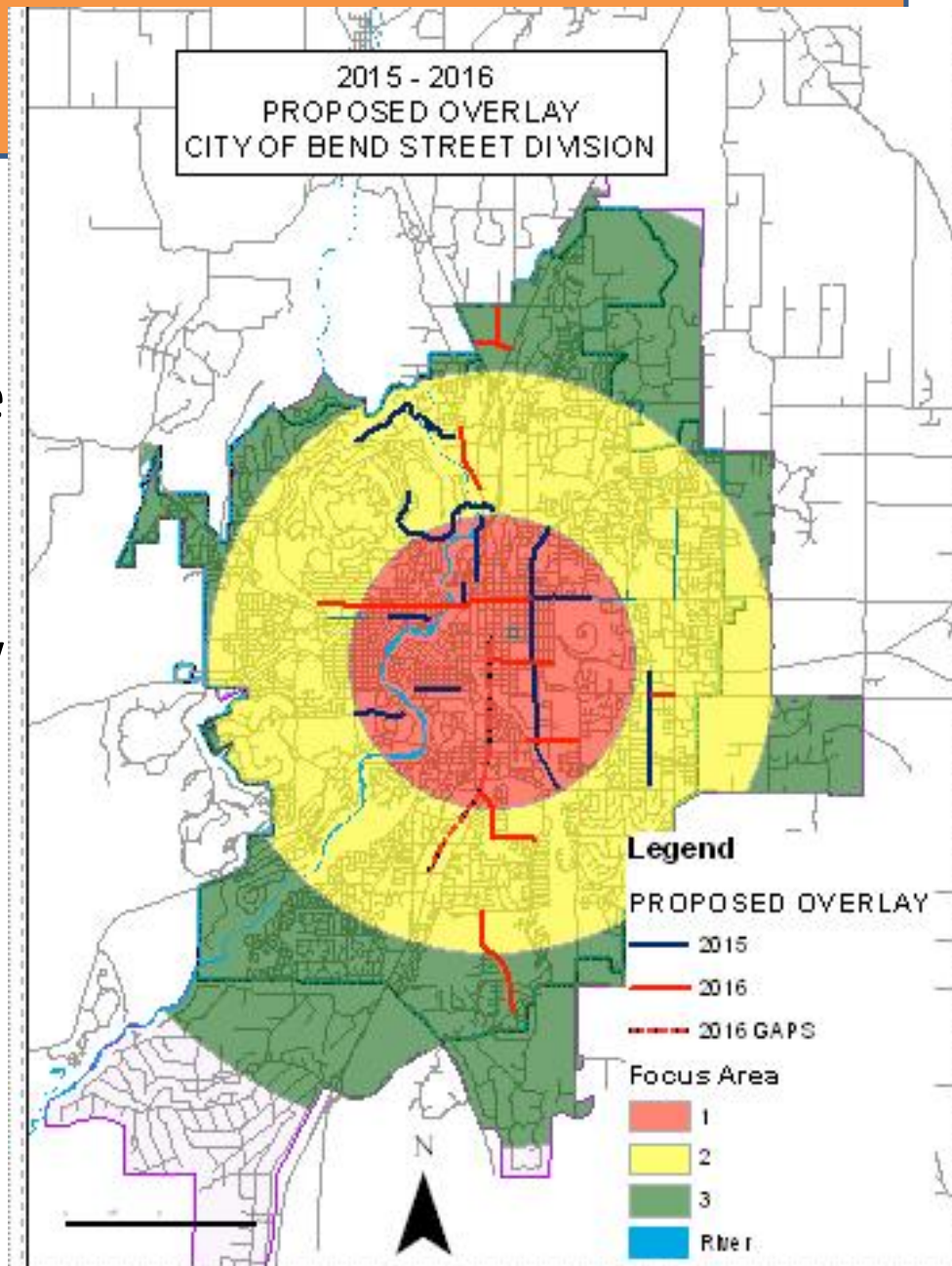
Focus Area #3 – Rural

- Knott Road
- Ponderosa Street
- Cooley Road
- China Hat Road

Overlays

Changes planned

- Accommodate potential changes to buffered bike lane when possible
- Create lane continuity
 - Minor widening to allow a nominal bike lane
 - Sharrows when insufficient width
 - Striping changes to accommodate transitions



PEDESTRIAN SYSTEM

Findings and Proposed System Implementation Plan

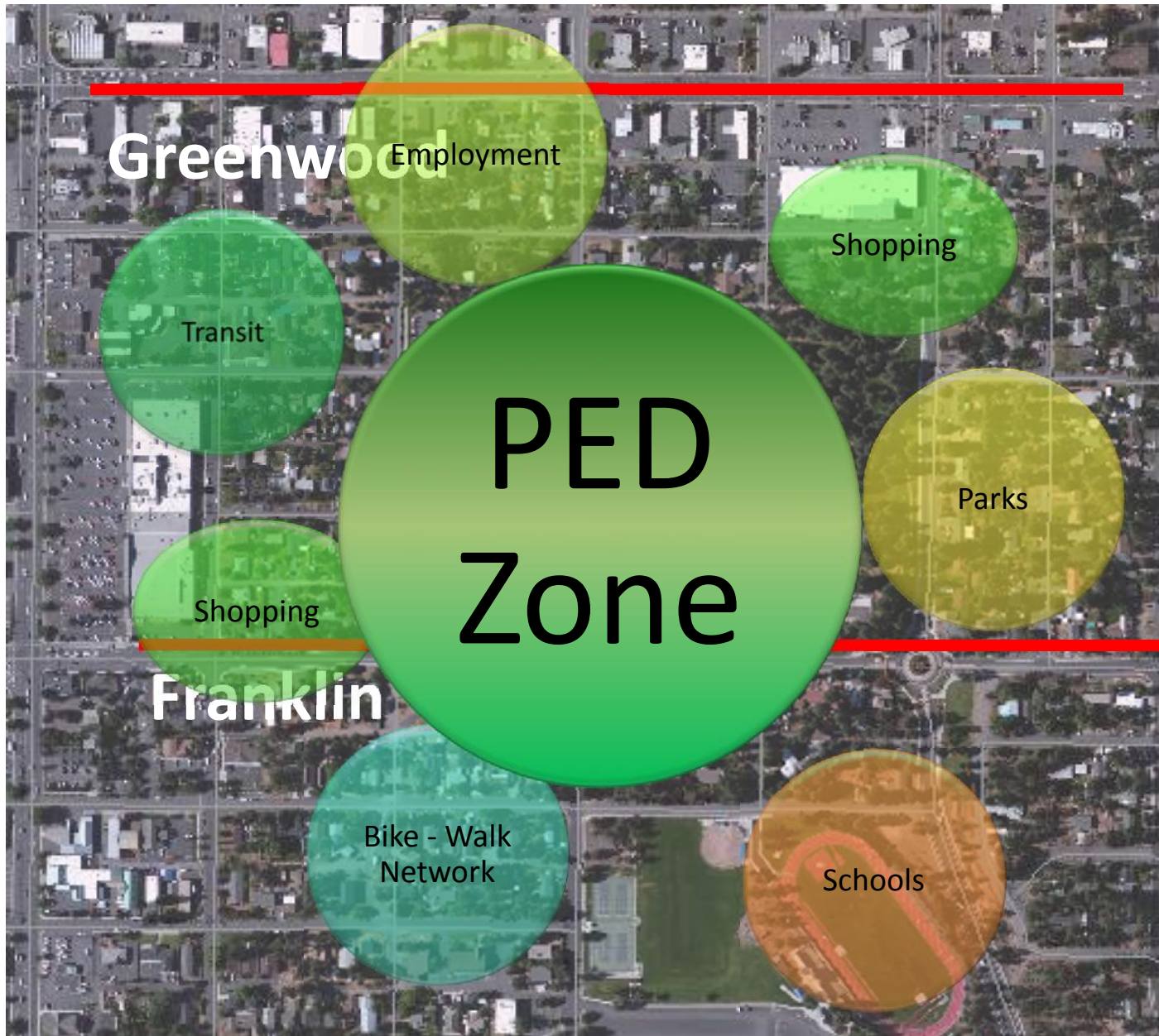
DRAFT STRATEGY - ARE WE ON THE RIGHT
TRACK?

Analysis Identifies Pedestrian Zones



IMAGES AND MAPPING COURTESY OF URBAN DESIGN 4 H

DRAFT STRATEGY - ARE WE ON THE RIGHT
TRACK?



Greenwood Employment

Shopping

Transit

PED
Zone

Parks

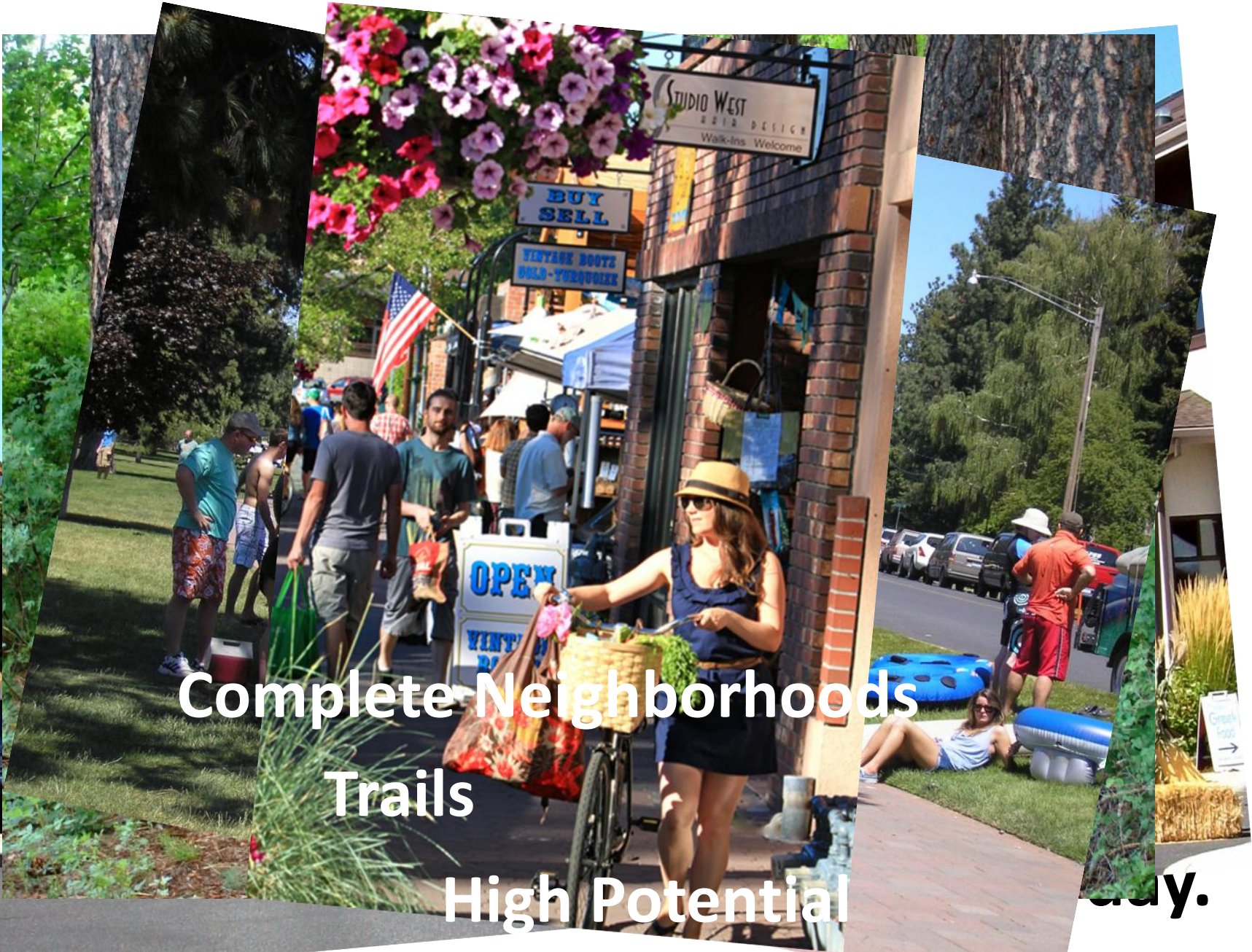
Shopping

Franklin

Bike - Walk
Network

Schools

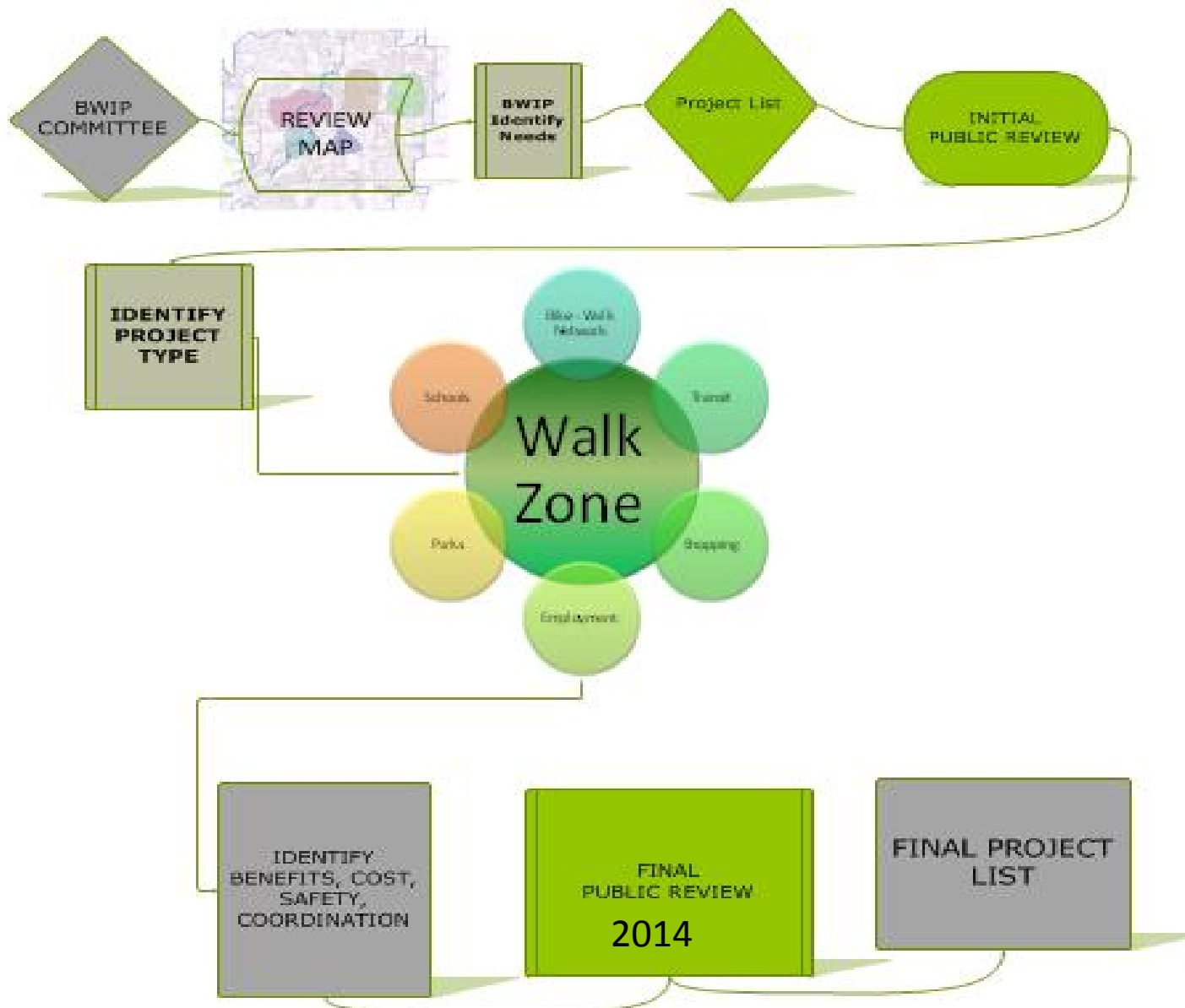
DRAFT STRATEGY - ARE WE ON THE RIGHT
TRACK?



Complete Neighborhoods
Trails
High Potential

day.

DRAFT STRATEGY - ARE WE ON THE RIGHT TRACK?



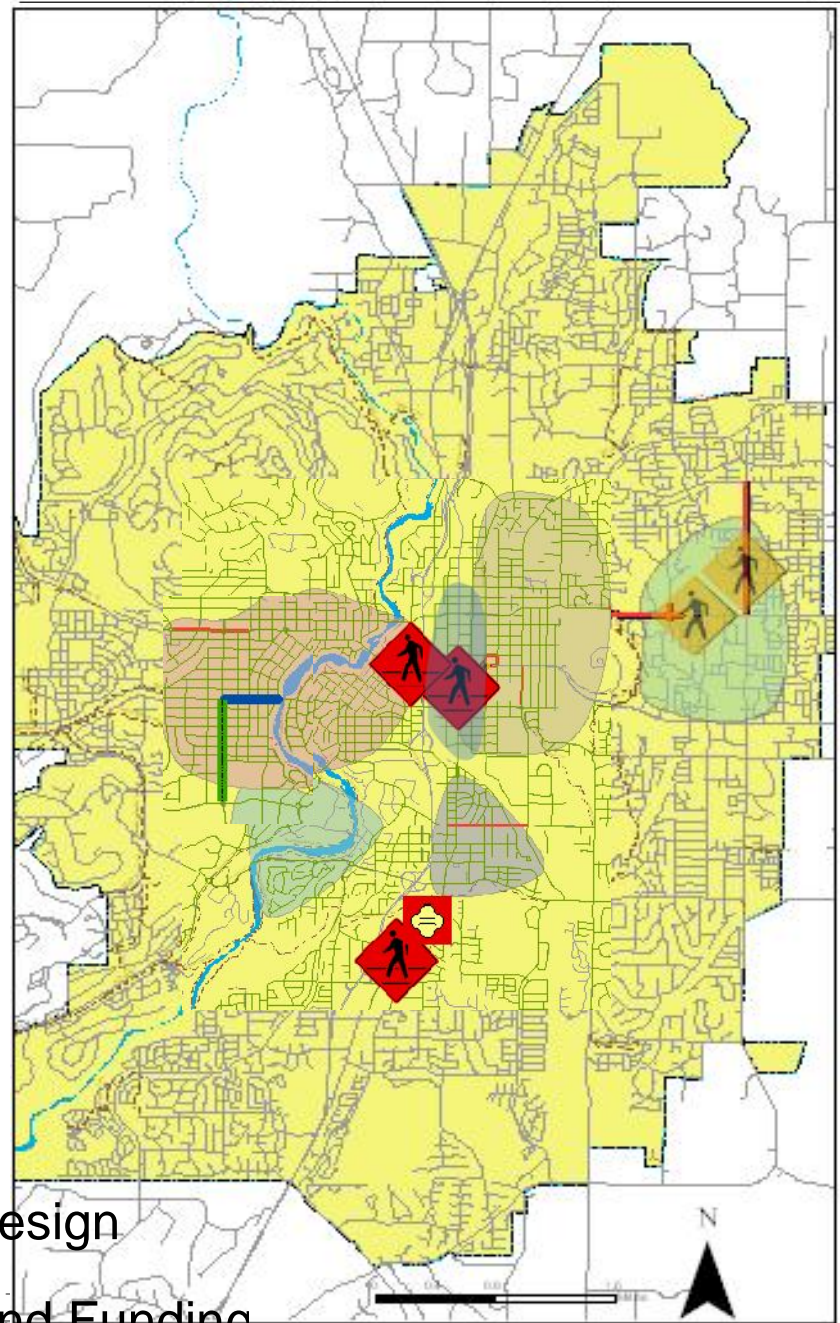
DRAFT STRATEGY - ARE WE ON THE RIGHT TRACK?

PED Zones Identified

- Downtown Area/Near West
- Bend Central District MMA
- Old Mill
- Mid Town
- Wilson
- 27th/Neff

Short – Term Projects

- Accessibility Sidewalks
- ◆ Accessibility Crossings
- ◆ Safety Pedestrian Bridge
- ◆ Safety Crossings
- Galveston Corridor - Prelim Design
- 14th Street - Tentative GO Bond Funding



HOW WILL THIS BE FUNDED?

- ✓ Transportation Engineering Construction Funds
- ✓ Coordination with other projects (such as overlays)
 - ✓ example: add funding to streets division for enhancement to overlays on schedule
 - the more projects, the more staff time needed in all divisions.
 - create design plans
 - additional changes to overlay
 - Maintenance funds identified for each project
- ✓ General Obligation Bond (14th street)

Funding Challenges include:

- Secure** funding for on-going maintenance costs (restriping)
- Land Use and Planning Coordination (OSU Campus, Central Area Plan, Grant Funding, and others)

WHAT DO YOU THINK?

- Comments? Questions? Other Directions to go with this strategy?
- Visit bendoregon.gov/bikewalk
Site documents included: toolbox of improvements
additional meeting locations/comment
section/interactive map
- Please share this information with your friends and family. You can help shape active transportation in Bend.