

Stormwater Steward Partner:

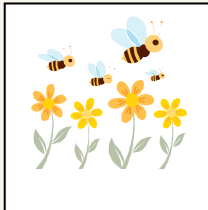
LANDSCAPE DESIGN



The design of our landscape and garden areas can play a big role in water quality. An effective design can save both money and natural resources, by reducing the need for pesticides, fertilizers, and over-water use that could lead to stormwater runoff. When pollutants get into a storm drain, they drain into the ground or directly into the Deschutes River typically without treatment. The river provides important habitat for fish and wildlife, along with numerous recreational opportunities—an irreplaceable resource. Our underground aquifers are an important drinking water source.

“To protect the Deschutes River and our drinking water quality through better landscape design, I pledge to:

- Understand my landscape and garden area characteristics before designing or making changes to it.
- Choose pest-resistant plants appropriate for the soil/sun conditions in my yard.



- Use native plants that have evolved for our natural soils, climates and pests and are therefore more pest resistant and drought tolerant and require fewer fertilizers.
- Research carefully and avoid or use the least toxic chemicals (e.g., pesticides, herbicides, fertilizers); avoid applying chemicals on windy days or right before or during rain; and be sure to sweep up and properly use or dispose of any oversprayed product.
- Group plants with similar watering needs together.
- Use drip irrigation, proper water zones, and SMART controllers to make my watering more efficient.

Signature: _____ Zip Code: _____

Thank You for Becoming a City of Bend Stormwater Steward!



UTILITY DEPARTMENT



Accommodation Information for People with Disabilities

To obtain this information in an alternate format such as Braille, large print, electronic formats and audio cassette tape please contact Karen Morris at 541-693-2141 or email kmorris@bendoregon.gov.