



Chapter 6: ODOT Vehicle Data



ODOT VEHICLE DATA

The Oregon Department of Transportation (ODOT) has several permanent counters in Bend on ODOT roadways that show historical data. ODOT collects continuous data statewide through Automated Traffic Recorder (ATR) or Counters. ATRs are placed at specific locations to record the distribution and variation of traffic flow by hour of the day, day of the week, and/or month of the year. The data is provided on ODOT’s website online. In the Bend area, there are 6 count stations that collect traffic data continuously (see Exhibit 6-1 for a map of locations). This data is presented below in Figures 6-10. The data presented is the average daily traffic (ADT) for each month.

Exhibit 6-1. ODOT ATR Locations in the Bend Area

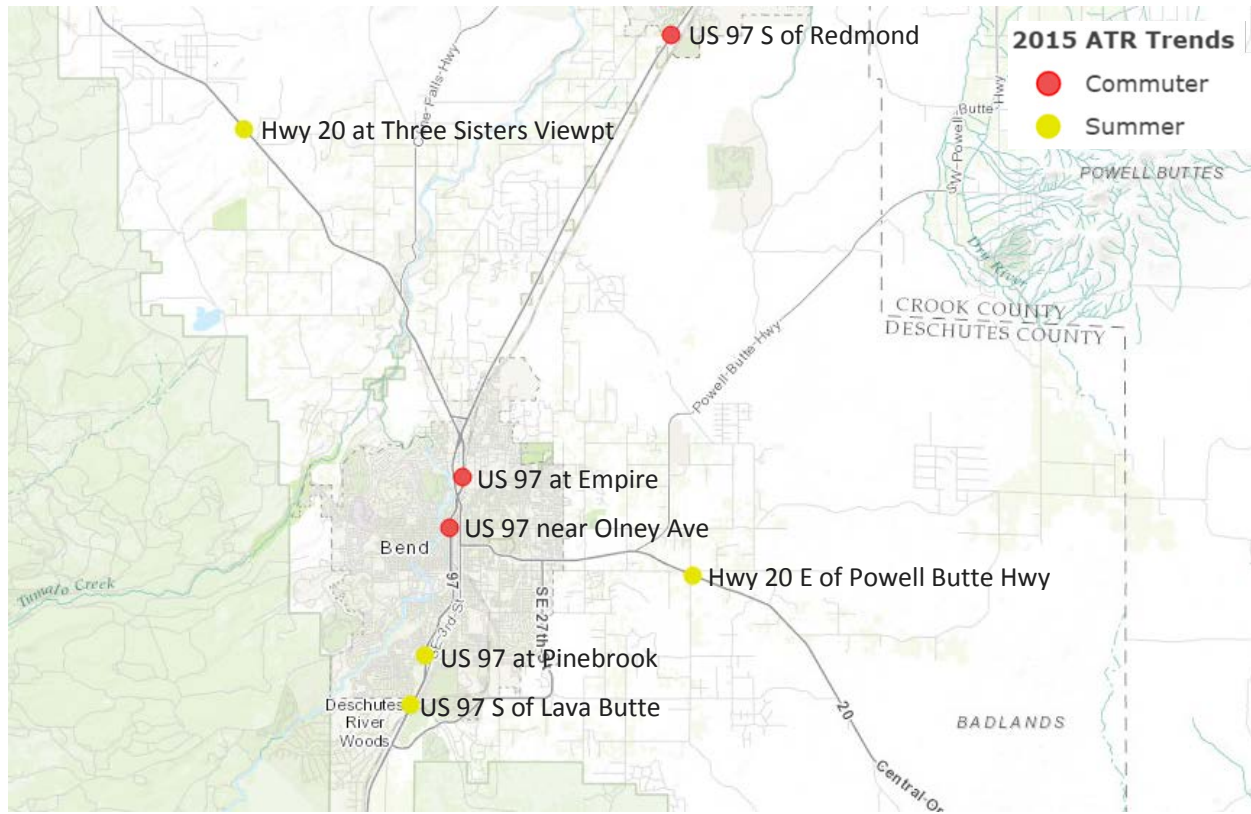


Table 6-1 shows the growth in volumes from 2015 to 2016 at each ATR location.

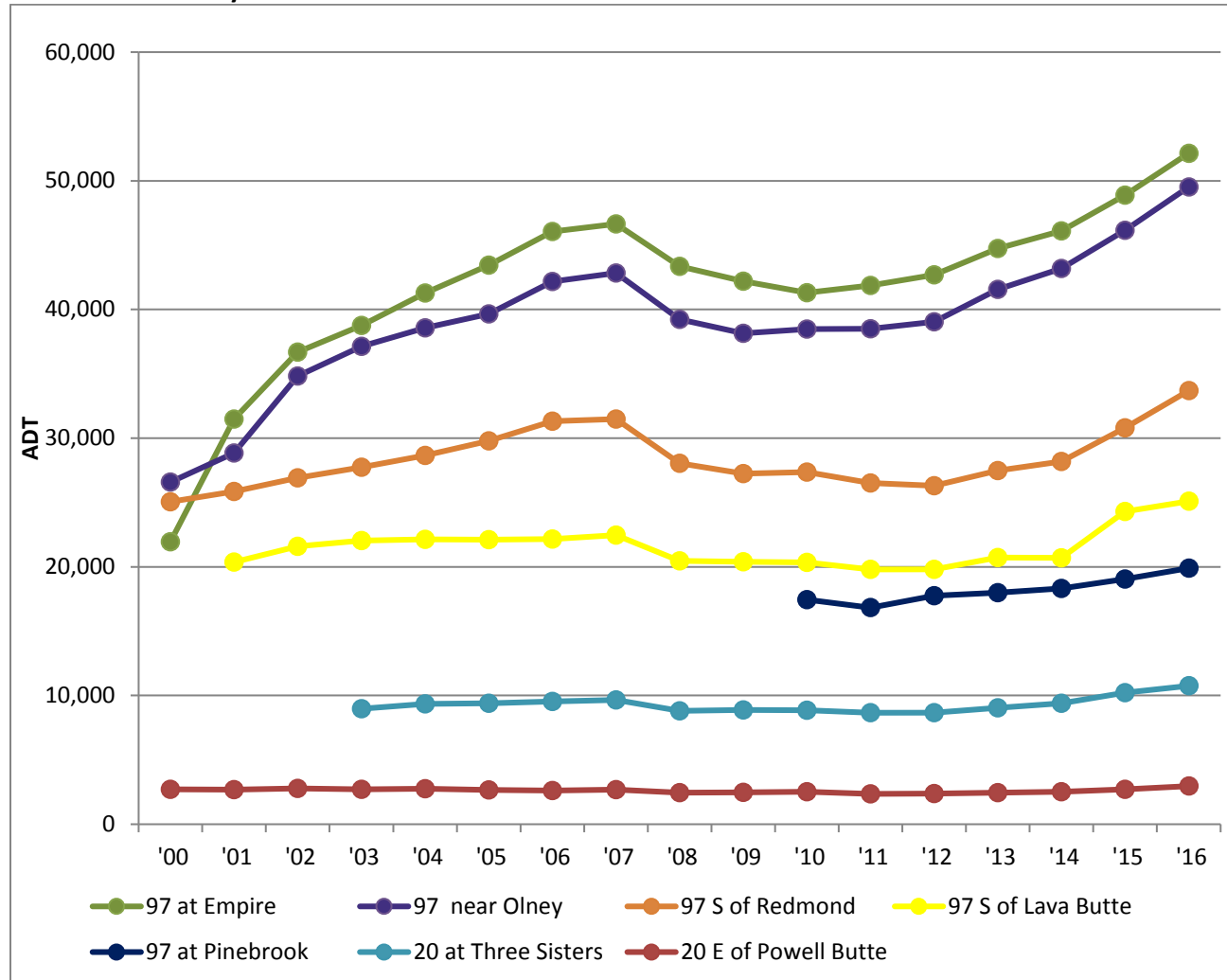
Table 6-1. ADT Data by ATR Location

Location	2015 ADT	2016 ADT	Growth
09-003: US 97 S of Lava Butte	24,300	25,097	3.3%
09-005: Hwy 20 E of Powell Butte Hwy	2,703	2,961	9.5%
09-007: US 97 at Empire	48,885	52,144	6.7%
09-009: US 97 near Olney Avenue	46,158	49,523	7.3%
09-015: Hwy 20 at Three Sisters Viewpont	10,224	10,755	5.2%
09-020: US 97 S of Redmond	30,800	33,693	9.4%
09-025: US 97 at Pinebrook	19,059	19,899	5.5%

As seen in the table, volumes at all locations grew by at least 3% between 2015 and 2016.

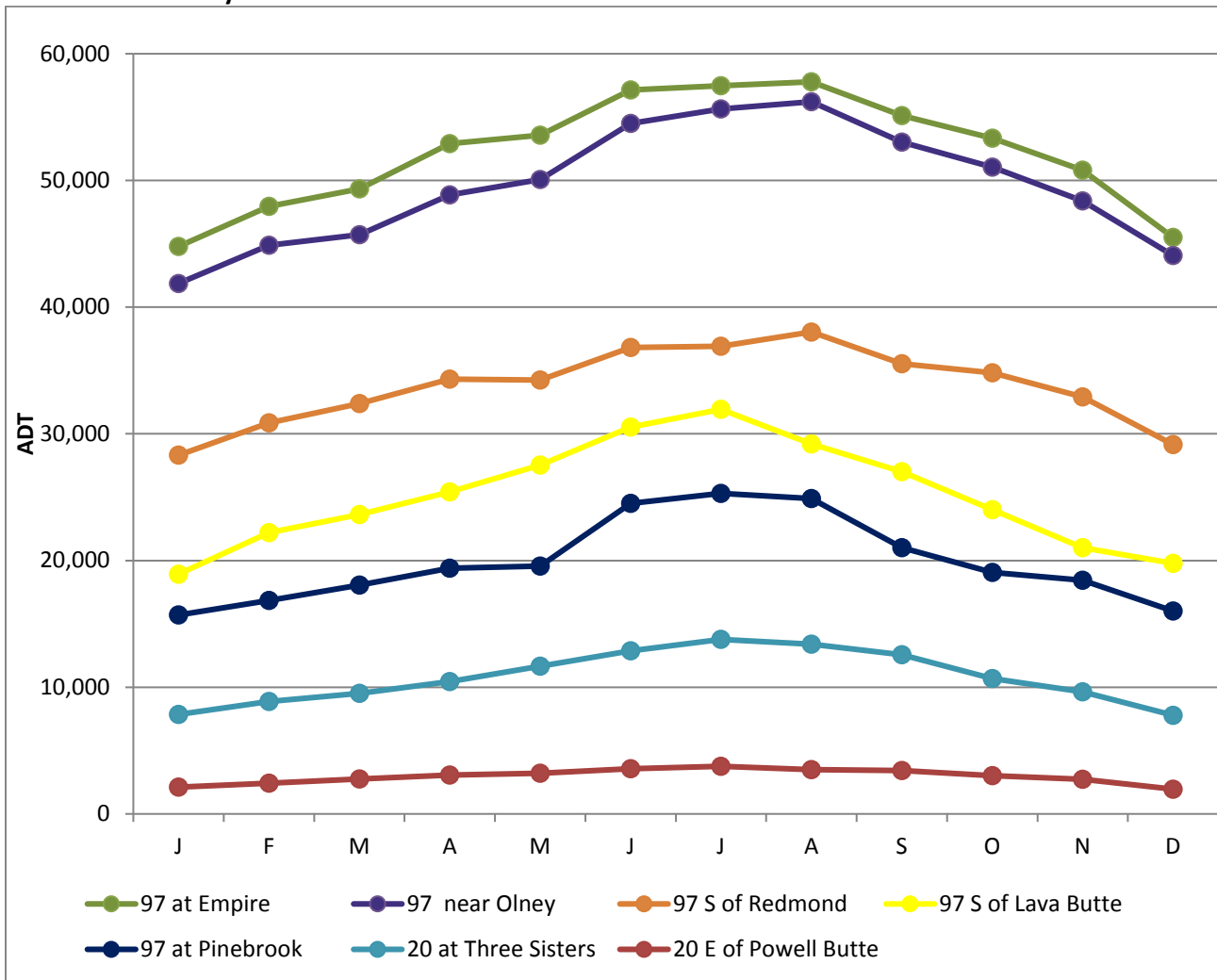
Exhibit 6-2 summarizes the ADT by year at each of the ATR locations in and around Bend.

Exhibit 6-2. ADT by Year



As seen in the exhibit, all locations experienced a dip in traffic between 2007 and 2008, with most locations seeing a steady increase in vehicle volumes over the last few years. Exhibit 6-3 shows the ATR data from 2016 by month.

Exhibit 6-3. ADT by Month



As seen in Exhibit 6-3, all locations peaked in July or August with the lowest volumes in January or December.

The following pages provide a summary of the data collected at the ATR locations to-date. The graphs show average ADT by month for each year the ATR has been in operation.

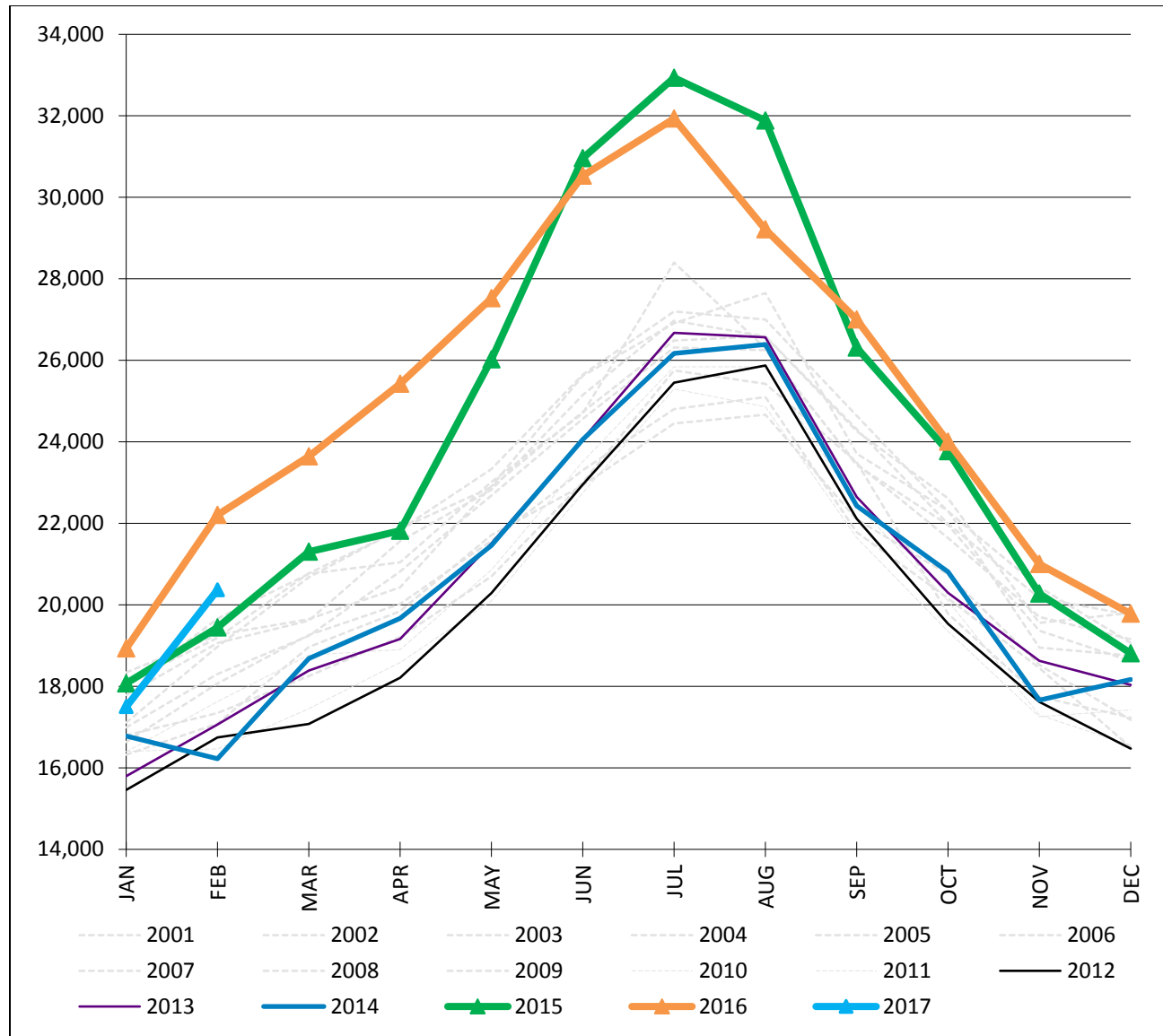
LOCATION:US 97 SOUTH OF LAVA BUTTEE

ATR Number: 09-003

Location Details: US 97 at milepost 142.41; 0.17 miles south of China Hat Road

Source: ATR Data

Average ADT in 2016: 25,097



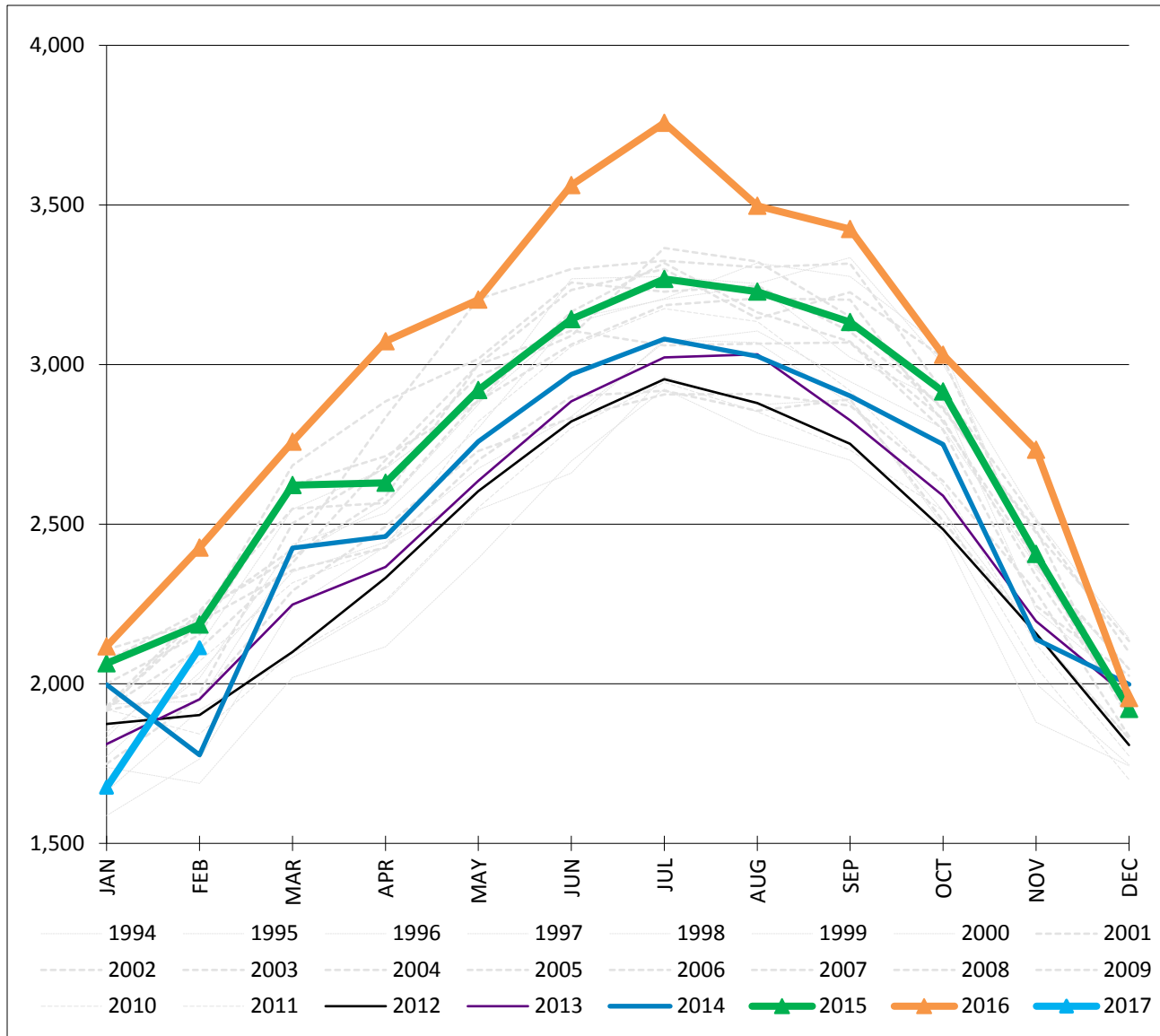
LOCATION: HWY 20 EAST OF POWELL BUTTE HIGHWAY

ATR Number: 09-005

Location Details: US 20 at milepost 6.28; 1.49 miles east of Powell Butte Road

Source: ATR Data

Average ADT in 2016: 2,961



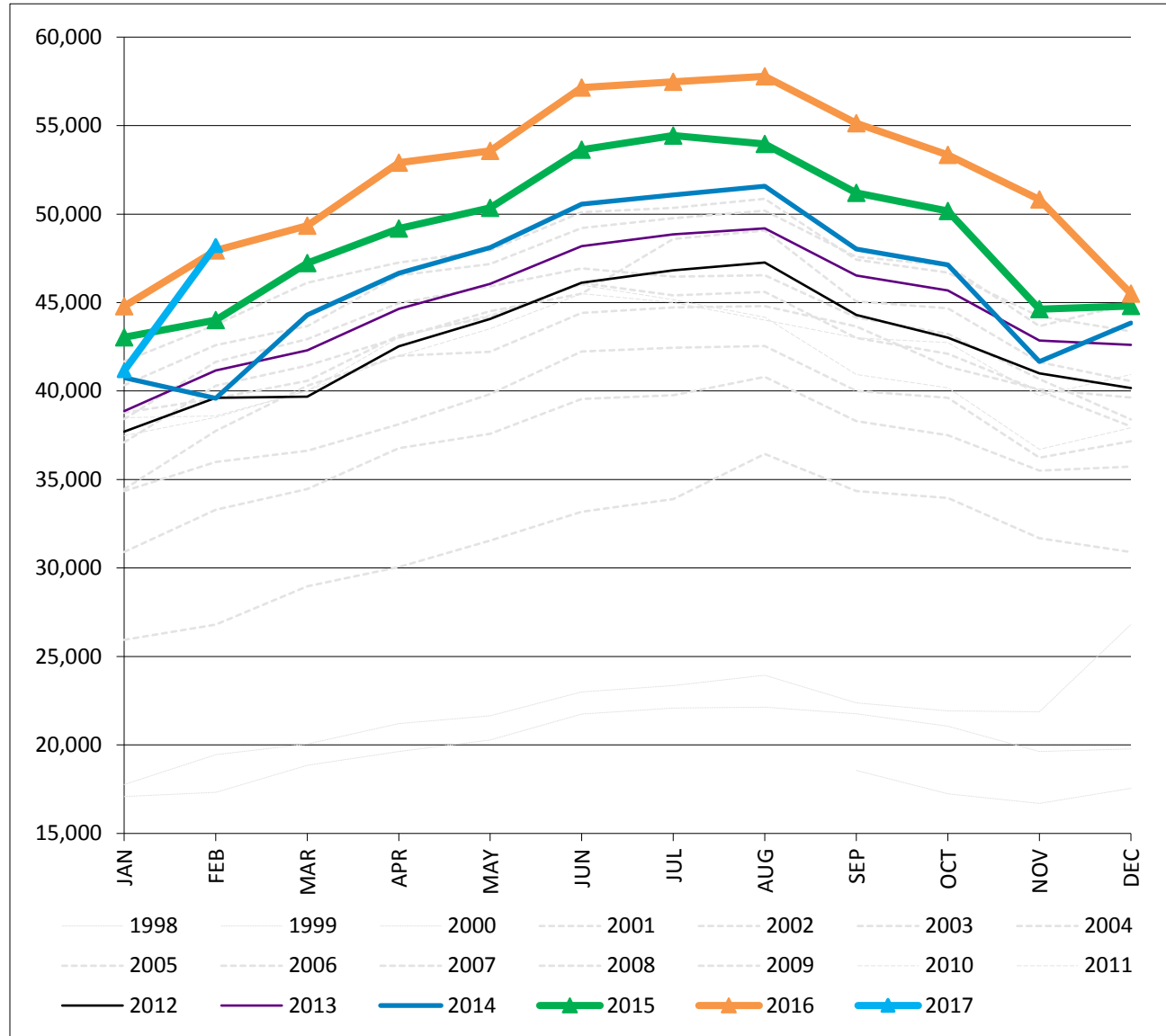
LOCATION: US 97 AT EMPIRE

ATR Number: 09-007

Location Details: US 97 at milepost 135.95; 0.49 miles south of Empire Avenue Interchange

Source: ATR Data

Average ADT in 2016: 2,961



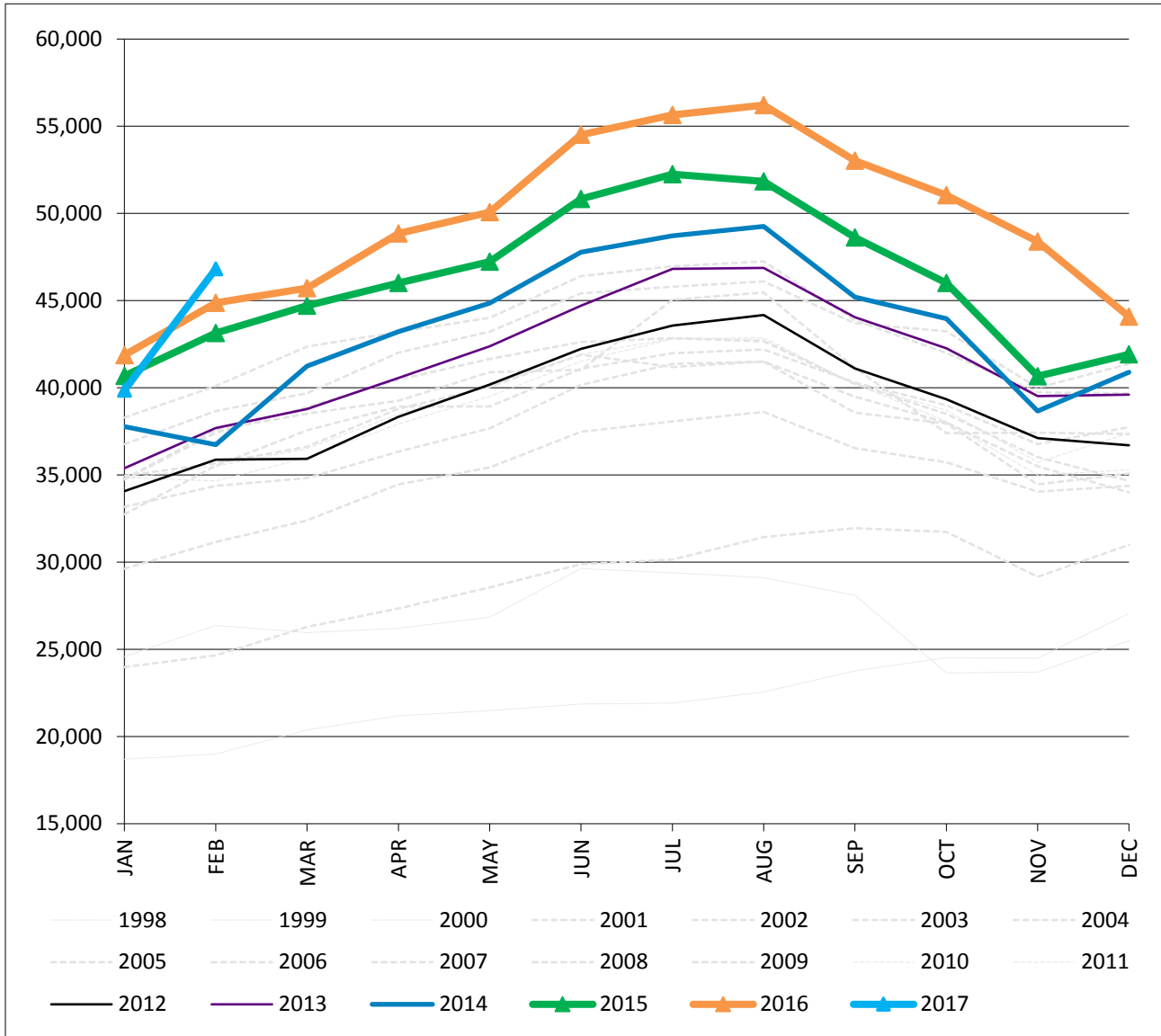
LOCATION: US 97 NEAR OLNEY AVENUE

ATR Number: 09-009

Location Details: US 97 at milepost 137.36; 0.23 miles south of Revere Avenue Interchange

Source: ATR Data

Average ADT in 2016: 49,523



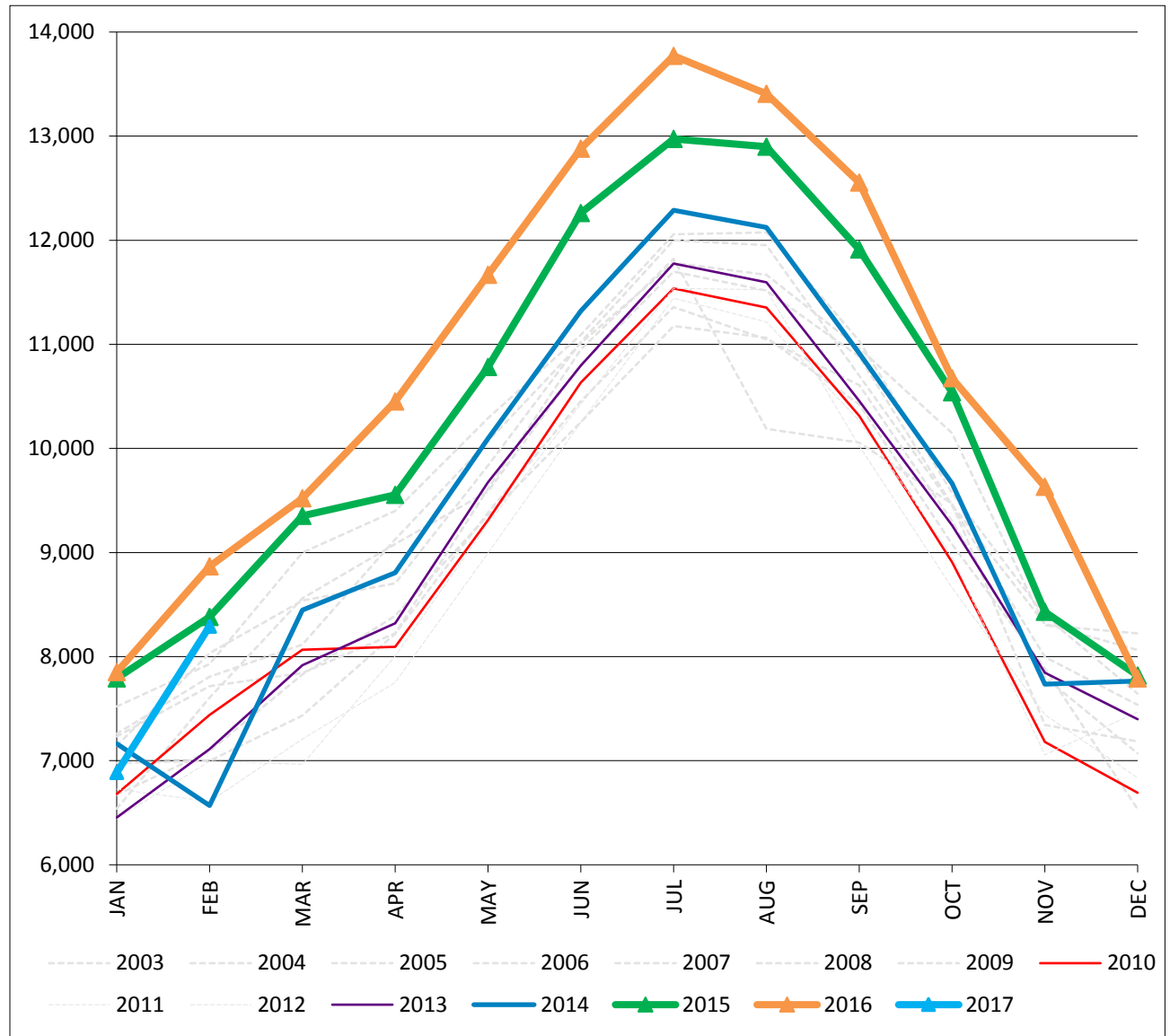
LOCATION: HWY 20 AT THREE SISTERS VIEWPOINT

ATR Number: 09-015

Location Details: US 20 at milepost 9.25; 0.47 miles south of Innes Market Road

Source: ATR Data

Average ADT in 2016: 10,755



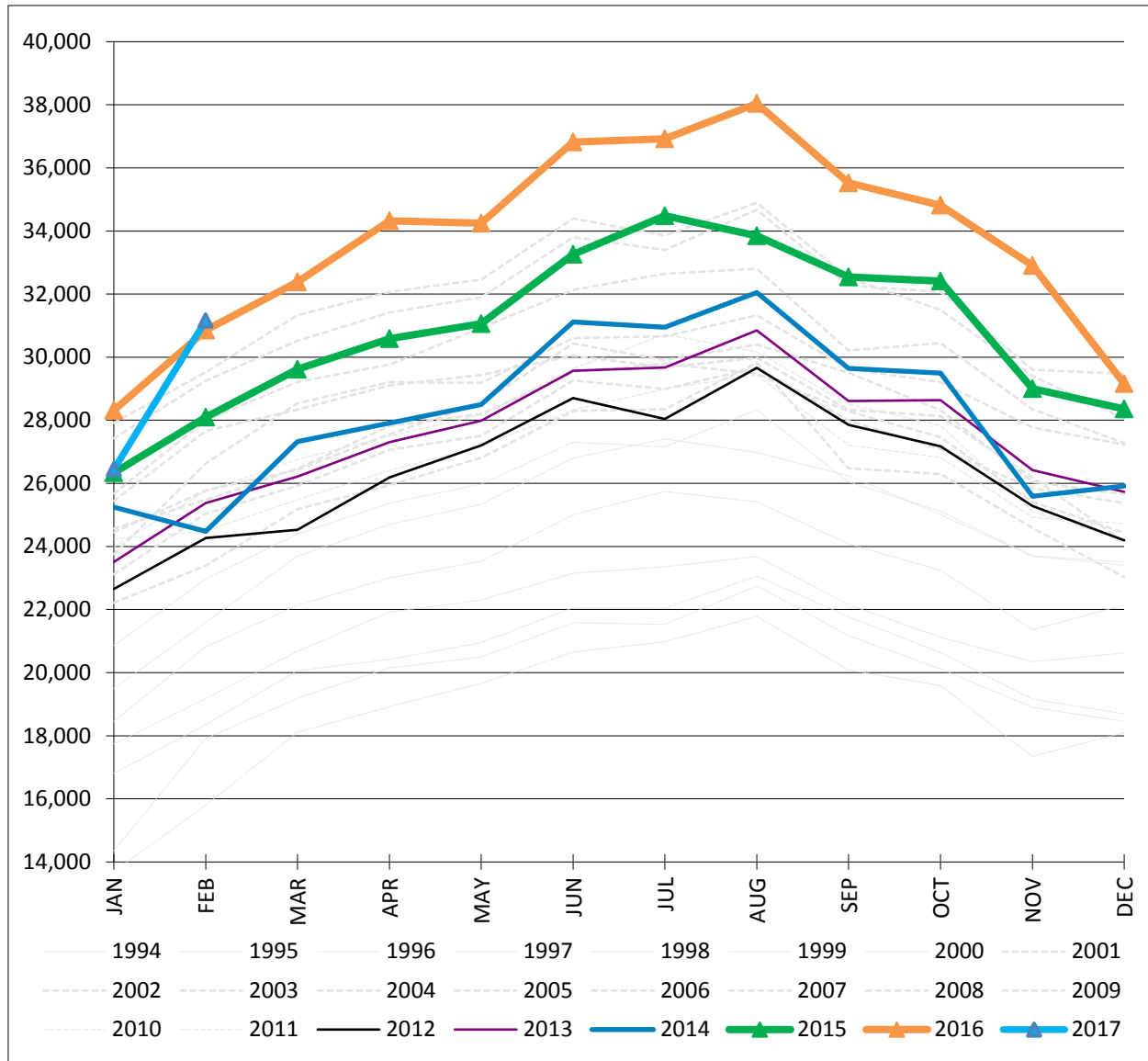
LOCATION: US 97 SOUTH OF REDMOND

ATR Number: 09-020

Location Details: US 97 at milepost 245.39; 0.79 miles south of Yew Avenue

Source: ATR Data

Average ADT in 2016: 3,693



LOCATION: US 97 AT PINEBROOK

ATR Number: 09-025

Location Details: US 97 at milepost 140.45; 0.07 miles north of Pinebrook Boulevard

Source: ATR Data

Average ADT in 2016: 15,580

