

Transportation Facts

- Bend is 6th fastest growing cityⁱ in the US; 4.9% increase from 2015 to 2016



POPULATION DATA

Population			
2000	2010	2017	2028 (Forecast)
52,800 ⁱⁱ	76,740	86,765 ⁱⁱⁱ	115,000 ^{iv}



SOCIO-ECONOMIC DATA

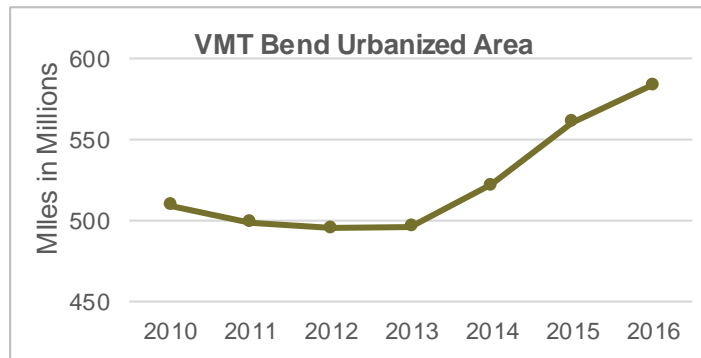
- Bend – Redmond Urban Area: 2016 Best Performing Urbanized Area in the Country^v
- 2016-17 employment growth highest in OR at 3.5%^{vi}
- About 65% of Deschutes County jobs^{viii} are in the Bend UGB
- Median household (HH) income in Oregon is approximately \$2,000 less than Bend

Median HH Income in Bend ^{vii}			Number of Jobs in Bend ⁴			
2010	2014	2016	2010	2014	2016	2028
\$53,006	\$52,471	\$55,625	40,765	43,000	50,879	67,000 ⁴

- Vehicle Miles Traveled (VMT) in Bend urbanized area increased by 13% from 2010 to 2016 compared to 8% statewide^{ix}
- VMT measures the movement of goods and personal travel patterns



TRAFFIC COUNT DATA



CRASH DATA

- Since 2007, 39 deaths and 197 serious injuries in Bend urbanized area (2007 - 2016)
- Bicyclists and pedestrians are 35% of total fatalities in Bend, nearly twice the statewide rate^x of 16%
- Cost of death (\$1m per person) and serious injury (\$400k per person) crashes in Bend^{xi} equals \$251 million (2010 dollars)
- A 3% annual reduction in fatalities statewide could eliminate deaths on our roadways by 2035^{xii}



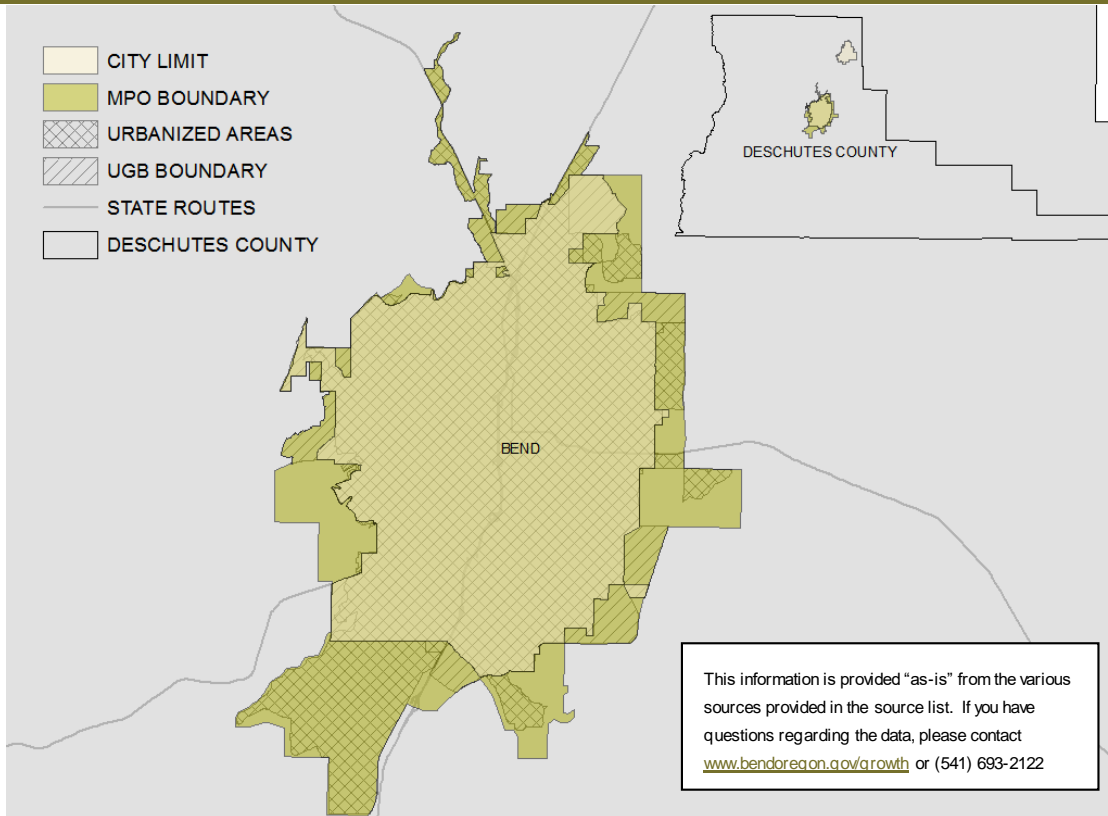
COMMUTER MODE SHARE

Mode to Work ^{xiii}							
2010-15 ACS ^{xiv}	Drive Alone	Carpool	Walk	Bike	Work @ Home	Ride Transit	Homes without cars
Bend	75.3%	7.4%	3.2%	3.0%	9.6%	0.1%	2.1%
Oregon	71.4%	10.4%	4.0%	2.4%	6.3%	4.4%	3.5%



MORE FACTS

- Largest city east of the Cascades; 5th largest in OR
- 32 roundabouts
- 65 miles urban trails^{xv}
- 14.3 microbreweries per 100K residents^{xvi}; 4th per capita in the U.S.
- Highest number of coffee houses per capita in the U.S. in 2017^{xvii}
- Elevation: 3,623 ft.
- Area: 33.27 sq. miles



Sources

ⁱ <https://www.census.gov/library/visualizations/2017/comm/cb17-81-cities-growing.html>

ⁱⁱ <https://www.pdx.edu/prc/sites/www.pdx.edu/prc/files/00%20rpt.pdf>

ⁱⁱⁱ <https://www.pdx.edu/prc/population-reports-estimates>

^{iv} <https://www.bendoregon.gov/Home/Show Document?id=28126> Integrated Land Use and Transportation Plan[Memo7/18/16]

^v <http://www.best-cities.org/bestcities.taf?rankyear=2016&type=small-cities&metro=MBND>

^{vi} <https://www.qualityinfo.org/ed-ffd>

^{vii} https://factfinder.census.gov/faces/tableservices/jsf/pages/productview.xhtml?pid=ACS_15_SPT_DP03&prodType=table

^{viii} <http://www.bendoregon.gov/Home/Show Document?id=10847> Bend Transit Plan 2013

^{ix} <http://www.oregon.gov/ODOT/Data/Pages/Traffic-Counting.aspx#VMT>

^x <http://www.oregon.gov/ODOT/Data/Pages/Crash.aspx> (Statewide data is from 2006-2015, Bend data is 2007-2016)

^{xi} <https://crashstats.nhtsa.dot.gov/Api/Public/View Publication/812013> Table 1-4. Summary of Unit Costs

^{xii} http://www.oregon.gov/ODOT/Safety/Documents/TSA_P_2016.pdf Performance Measures

^{xiii} https://factfinder.census.gov/faces/tableservices/jsf/pages/productview.xhtml?pid=ACS_15_5YR_S0801&prodType=table

^{xiv} ACS is the American Community Survey is an ongoing survey that provides information about people each year.

^{xv} http://www.bendparksandrec.org/parks_trails/trail_list/

^{xvi} <https://www.forbes.com/sites/niallmccarthy/2016/11/01/wich-u-s-cities-have-the-most-microbreweries-per-capita-infographic/#2b43bf9ce19b>

^{xvii} <https://www.npd.com/wps/portal/npd/us/news/press-releases/2017/america-is-the-land-of-milk-and-honey-and-coffee-shops/>