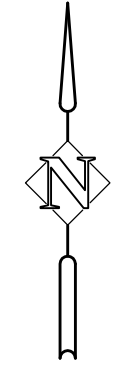
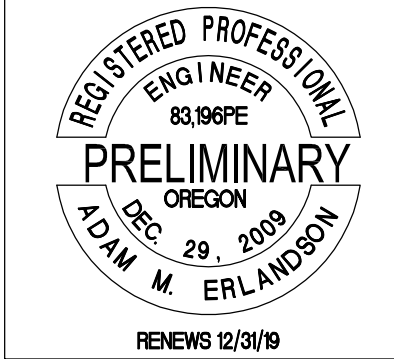


NOTE:
 RE = RIM ELEVATION
 IE = INVERT ELEVATION
 LF = LINEAR FEET
 TC = TOP OF CURB
 TP = TOP OF PAVEMENT
 FS = FINISH SURFACE
 FG = FINISH GRADE
 (E) = EXISTING
 (P) = PROPOSED
 COS = CITY OF SISTERS
 PUE = PUBLIC UTILITY EASEMENT
 ROW = RIGHT OF WAY
 SW = SIDEWALK
 EP = EDGE OF PAVEMENT



OVERALL SITE LAYOUT PLAN
 SCALE: 1" = 80'



CITY OF BEND
SAFE ROUTES: JUNIPER SCHOOL
 OVERALL SITE LAYOUT PLAN
 BEND, OREGON



REVISIONS:
 1. _____
 2. _____
 3. _____

Harper Houf Peterson Righellis Inc.
 ENGINEERS + PLANNERS
 LANDSCAPE ARCHITECTS + SURVEYORS
 250 NW Franklin Avenue, Suite 404, Bend, OR 97703
 phone: 541.318.1161 www.hhpr.com fax: 541.318.1141

DESIGNED BY: AE
 DRAWN BY: MD
 SCALE: 1" = 80'
 FILE: BND04-209_C1-Overall Layout.dwg
 DATE: 05.25.2018

VERIFY SCALES
 0 1" BAR EQUALS ONE INCH ON ORIGINAL DRAWING

SHEET:
C1.0

COB # GM15DA



CITY OF BEND
SAFE ROUTES: JUNIPER SCHOOL
 SCHOOL APPROACH PLAN & PROFILE
 BEND, OREGON



REVISIONS:
 1. _____
 2. _____
 3. _____

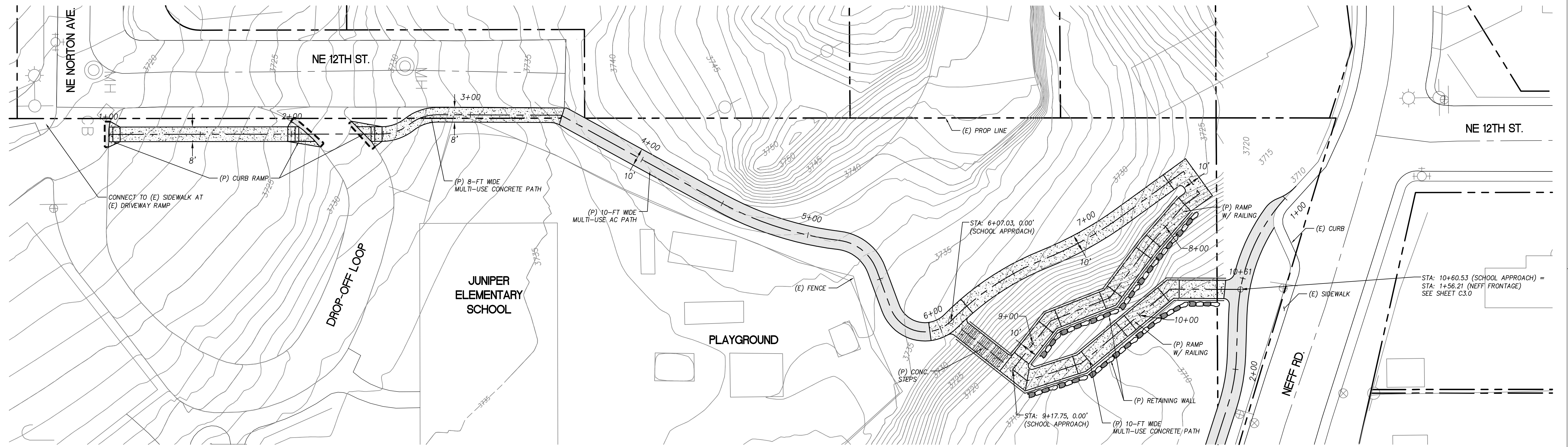
Harper Houf Peterson Righellis Inc.
 ENGINEERS+PLANNERS
 LANDSCAPE ARCHITECTS+SURVEYORS
 250 NW Franklin Avenue, Suite 404, Bend, OR 97703
 phone: 541.318.1161 www.hhpr.com fax: 541.318.1141

DESIGNED BY: AE
 DRAWN BY: MD
 SCALE: 1" = 20'
 FILE: bnd04-209_c2-school approach.dwg
 DATE: 05.25.2018

VERIFY SCALES
 0 1" BAR EQUALS ONE INCH ON ORIGINAL DRAWING

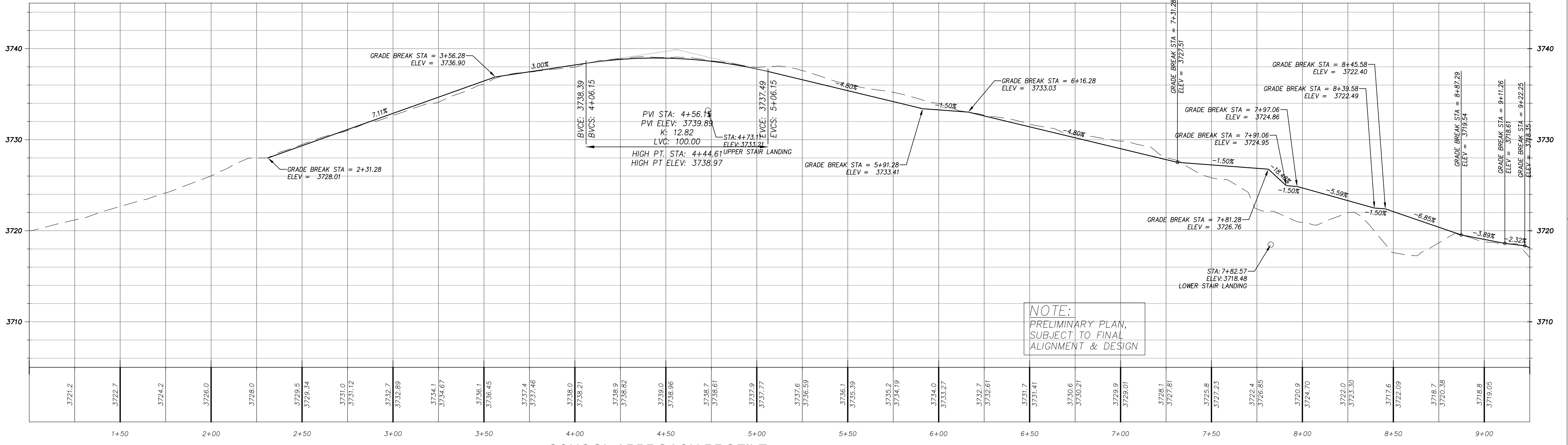
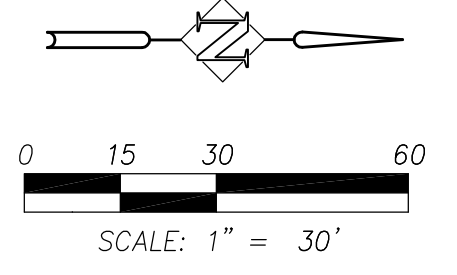
SHEET: **C2.0**

COB # GM15DA



SCHOOL APPROACH PLAN
 SCALE: 1" = 30'

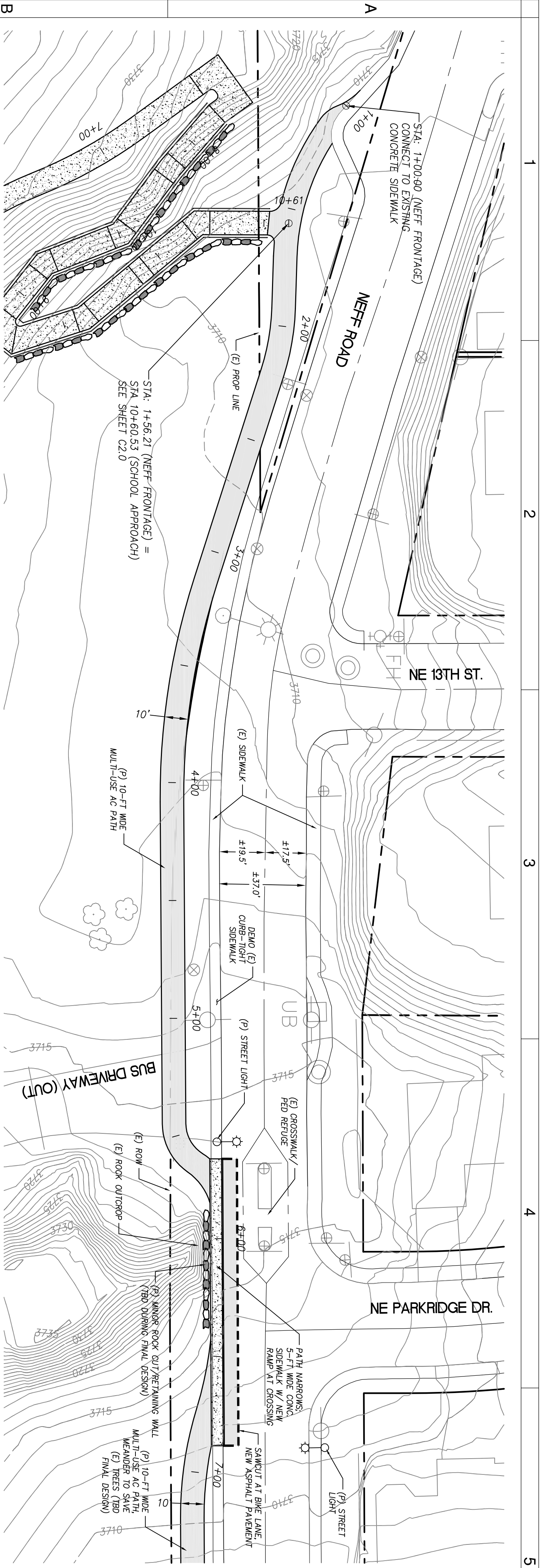
NOTE:
 RE = RIM ELEVATION
 IE = INVERT ELEVATION
 LF = LINEAR FEET
 TC = TOP OF CURB
 TP = TOP OF PAVEMENT
 FS = FINISH SURFACE
 FG = FINISH GRADE
 (E) = EXISTING
 (P) = PROPOSED
 COS = CITY OF SISTERS
 PUE = PUBLIC UTILITY EASEMENT
 ROW = RIGHT OF WAY
 SW = SIDEWALK
 EP = EDGE OF PAVEMENT



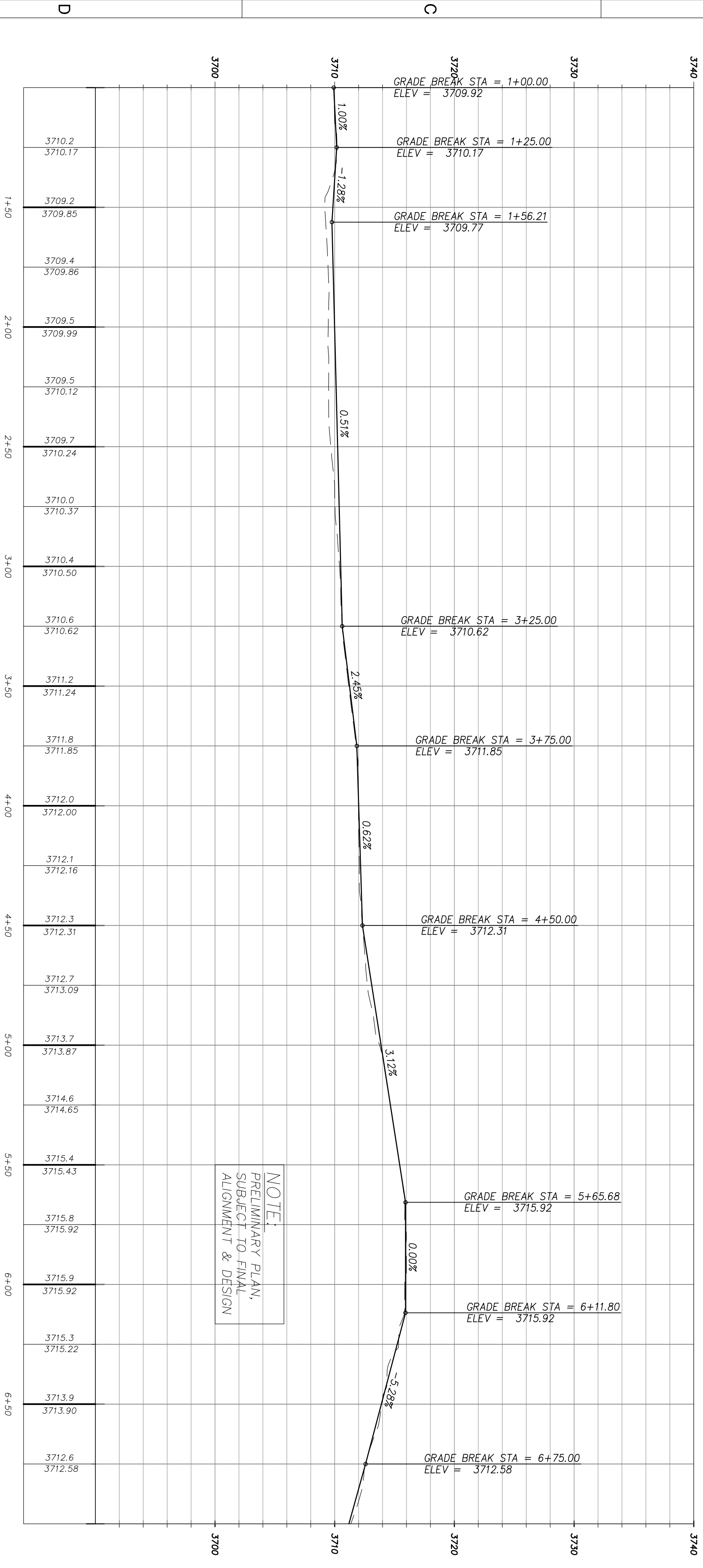
SCHOOL APPROACH PROFILE
 H. SCALE: 1" = 30'
 V. SCALE: 1" = 6'

NOTE:
 PRELIMINARY PLAN,
 SUBJECT TO FINAL
 ALIGNMENT & DESIGN

P:\BND (City of Bend)\BND-04 (GM15DA On Call)\BND04-209-DWGS\SHEETS\BND04-209_C2-School Approach.dwg



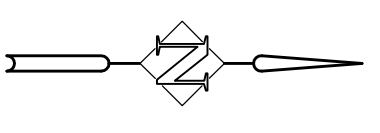
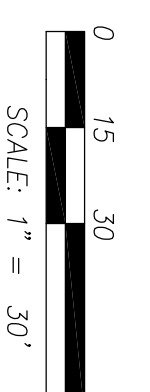
NEFF FRONTAGE PLAN
 STA: 1+00 - 7+00
 SCALE: 1" = 30'



NOTE:
 PRELIMINARY PLAN,
 SUBJECT TO FINAL
 ALIGNMENT & DESIGN

NEFF FRONTAGE PROFILE
 STA: 1+00 - 7+00
 H. SCALE: 1" = 30'
 V. SCALE: 1" = 6'

NOTE:
 RE = RIM ELEVATION
 FE = FINISH ELEVATION
 LE = LOW POINT ELEVATION
 TC = TOP OF CURB
 TP = TOP OF PAVEMENT
 FS = FINISH SURFACE
 (E) = EXISTING
 (P) = PROPOSED
 COS = CITY OF SISTERS
 RUC = RURAL UTILITY EASEMENT
 SW = SIDEWALK
 EP = EDGE OF PAVEMENT



REVISIONS:
 1.
 2.
 3.



Harper Houf Peterson Righellis Inc.
 ENGINEERS • PLANNERS
 LANDSCAPE ARCHITECTS • SURVEYORS
 250 NW Franklin Avenue, Suite 404, Bend, OR 97703
 phone: 541.318.1161 www.hhpr.com fax: 541.318.1141

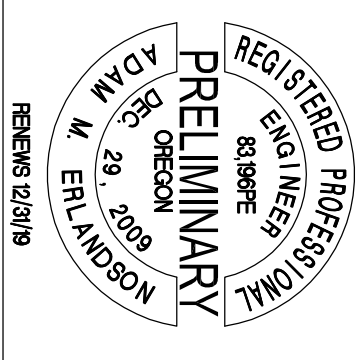
DESIGNED BY: AE
 DRAWN BY: MD
 SCALE: 1" = 30'
 FILE: bnd04-209_c3-neff frontage.dwg
 DATE: 05.25.2018

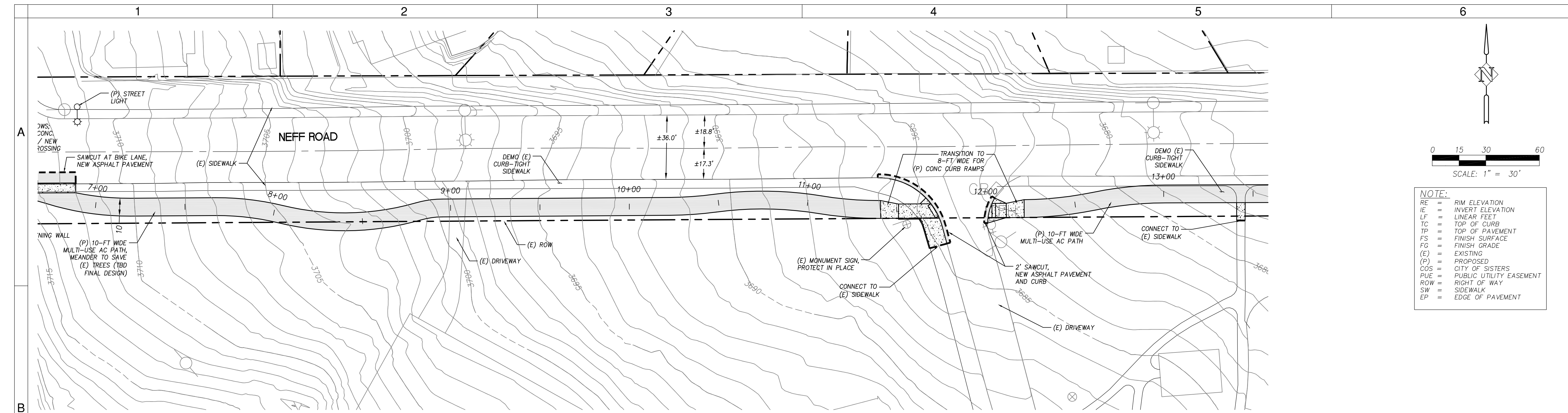
VERIFY SCALES
 0
 1"
 BAR EQUALS ONE INCH
 ON ORIGINAL DRAWING
 SHEET:

C3.0

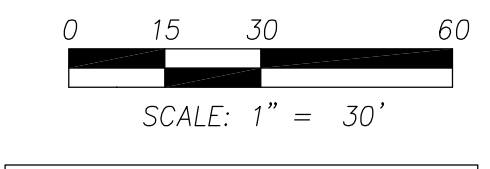
COB # GM15DA

CITY OF BEND
SAFE ROUTES: JUNIPER SCHOOL
 NEFF FRONTAGE PLAN & PROFILE STA: 1+00 - 7+00
 BEND, OREGON

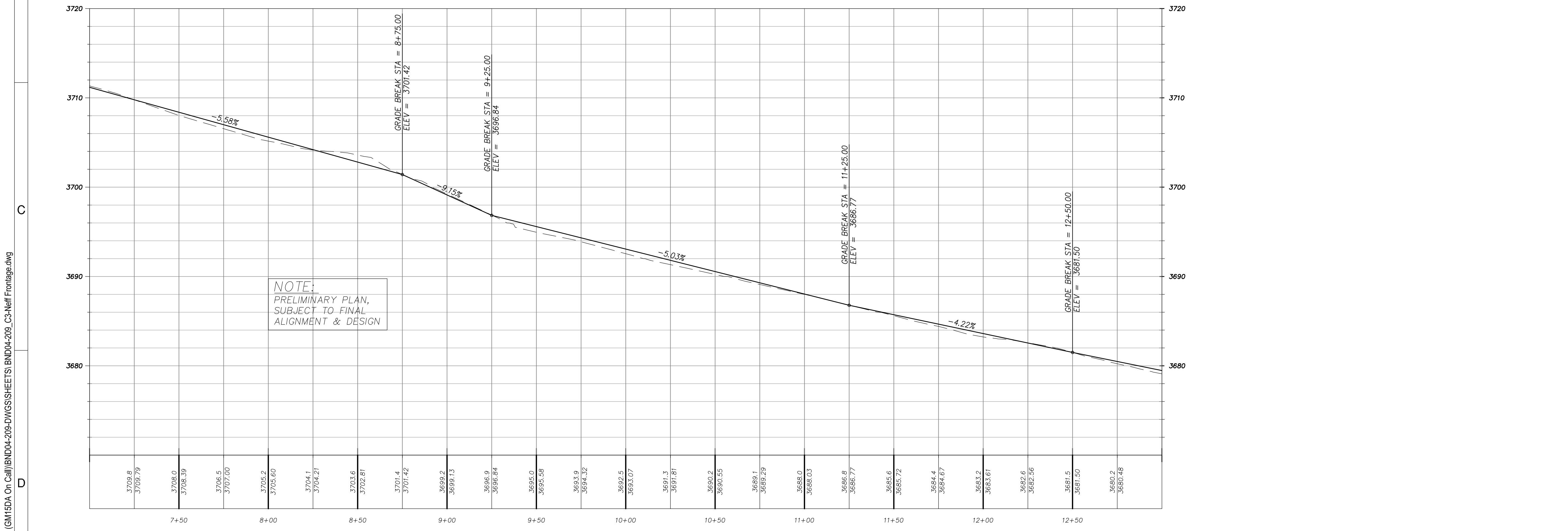




NEFF FRONTAGE PLAN
 STA: 7+00 - 13+00
 SCALE: 1" = 30'



NOTE:
 RE = RIM ELEVATION
 IE = INVERT ELEVATION
 LF = LINEAR FEET
 TC = TOP OF CURB
 TP = TOP OF PAVEMENT
 FS = FINISH SURFACE
 FG = FINISH GRADE
 (E) = EXISTING
 (P) = PROPOSED
 COS = CITY OF SISTERS
 PUE = PUBLIC UTILITY EASEMENT
 ROW = RIGHT OF WAY
 SW = SIDEWALK
 EP = EDGE OF PAVEMENT



NEFF FRONTAGE PROFILE
 STA: 7+00 - 13+00
 H. SCALE: 1" = 30'
 V. SCALE: 1" = 6'



CITY OF BEND
SAFE ROUTES: JUNIPER SCHOOL
 NEFF FRONTAGE PLAN & PROFILE STA: 7+00 - 13+00
 BEND, OREGON



REVISIONS:

1.	
2.	
3.	

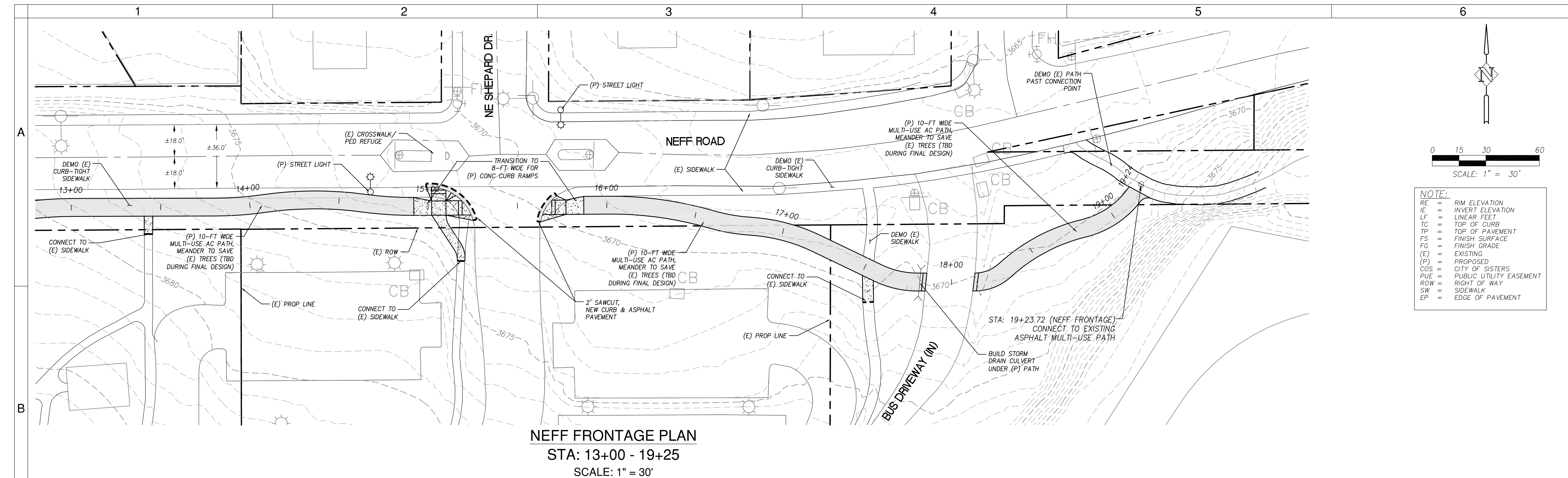
Harper Houf Peterson Righellis Inc.
 ENGINEERS+PLANNERS
 LANDSCAPE ARCHITECTS+SURVEYORS
 250 NW Franklin Avenue, Suite 404, Bend, OR 97703
 phone: 541.318.1161 www.hhpr.com fax: 541.318.1141

DESIGNED BY: AE
 DRAWN BY: MD
 SCALE: 1" = 30'
 FILE: bnd04-209_dwg3-neff frontage.dwg
 DATE: 04.25.2018

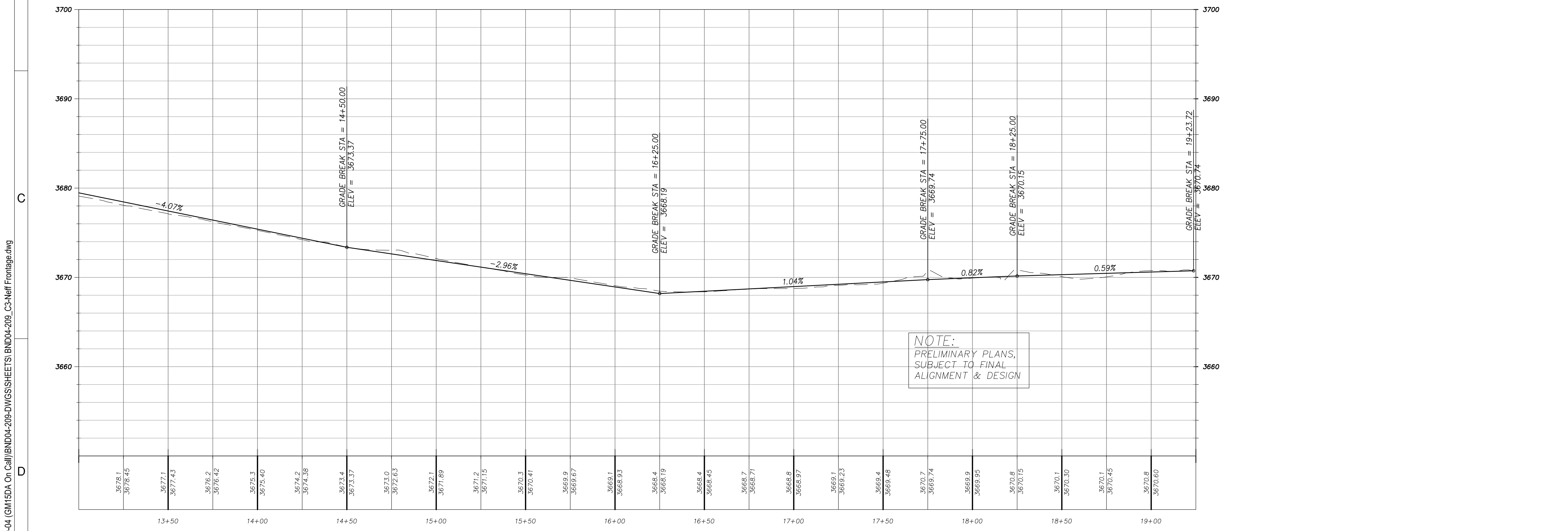
VERIFY SCALES
 0 1"
 BAR EQUALS ONE INCH
 ON ORIGINAL DRAWING

SHEET:
C3.1

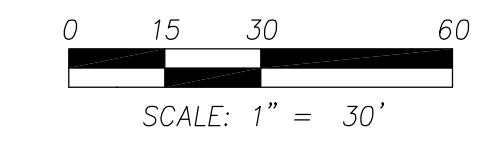
COB # GM15DA



NEFF FRONTAGE PLAN
 STA: 13+00 - 19+25
 SCALE: 1" = 30'



NEFF FRONTAGE PROFILE
 STA: 13+00 - 19+25
 H. SCALE: 1" = 30'
 V. SCALE: 1" = 6'



NOTE:
 RE = RIM ELEVATION
 IE = INVERT ELEVATION
 LF = LINEAR FEET
 TC = TOP OF CURB
 TP = TOP OF PAVEMENT
 FS = FINISH SURFACE
 FG = FINISH GRADE
 (E) = EXISTING
 (P) = PROPOSED
 COS = CITY OF SISTERS
 PUE = PUBLIC UTILITY EASEMENT
 ROW = RIGHT OF WAY
 SW = SIDEWALK
 EP = EDGE OF PAVEMENT

NOTE:
 PRELIMINARY PLANS,
 SUBJECT TO FINAL
 ALIGNMENT & DESIGN



CITY OF BEND
SAFE ROUTES: JUNIPER SCHOOL
 NEFF FRONTAGE PLAN & PROFILE STA: 13+00 - 19+25
 BEND, OREGON



REVISIONS:
 1. _____
 2. _____
 3. _____

Harper Houf Peterson Righellis Inc.
 ENGINEERS+PLANNERS
 LANDSCAPE ARCHITECTS+SURVEYORS
 250 NW Franklin Avenue, Suite 404, Bend, OR 97703
 phone: 541.318.1161 www.hhpr.com fax: 541.318.1141

DESIGNED BY: AE
 DRAWN BY: MD
 SCALE: 1" = 30'
 FILE: BND04-209_C3-NEFF FRONTAGE.DWG
 DATE: 05.25.2018

VERIFY SCALES
 0 1" BAR EQUALS ONE INCH ON ORIGINAL DRAWING

SHEET:
C3.2

COB # GM15DA