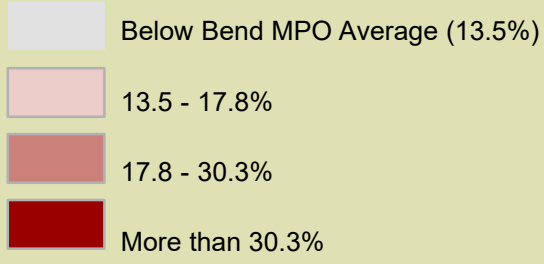




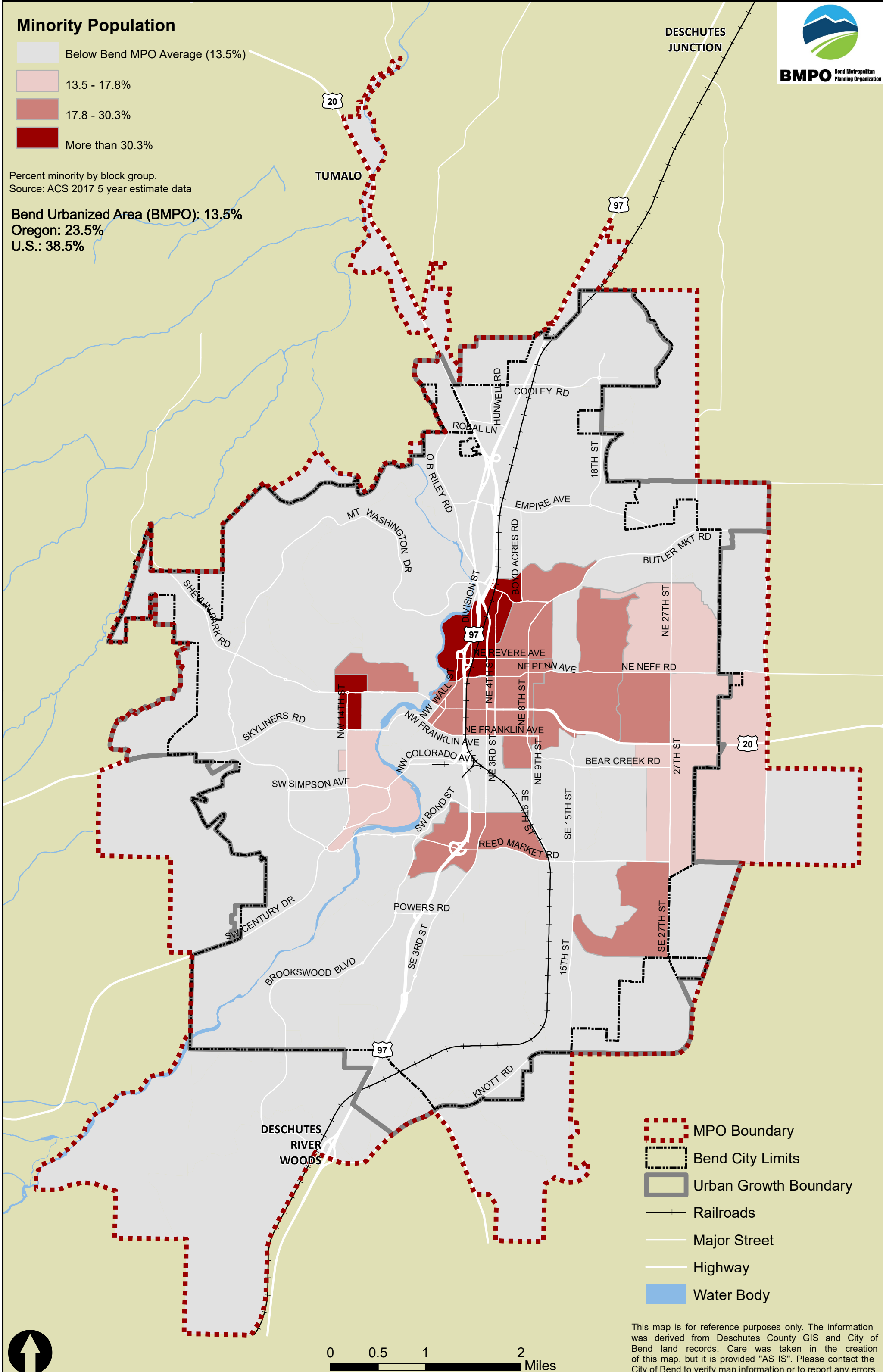
BMPO Bend Metropolitan Planning Organization

Minority Population



Percent minority by block group.
Source: ACS 2017 5 year estimate data

Bend Urbanized Area (BMPO): 13.5%
Oregon: 23.5%
U.S.: 38.5%



- MPO Boundary
- Bend City Limits
- Urban Growth Boundary
- Railroads
- Major Street
- Highway
- Water Body

This map is for reference purposes only. The information was derived from Deschutes County GIS and City of Bend land records. Care was taken in the creation of this map, but it is provided "AS IS". Please contact the City of Bend to verify map information or to report any errors.

