

# PROJECT VISION

## Vision Statement

*Our vision is that the Southeast Expansion Area becomes a complete and walkable community and a welcome addition to Southeast Bend. Houses, businesses, parks and schools are compatible neighbors, and have well-planned transitions between them. The mix of uses are highly connected by neighborhood streets, paths, and open spaces. The area has an active and vibrant outdoor life; it is a place where neighbors are out walking, biking, and interacting daily. The Southeast Expansion Area is a unique and successful community in Bend.*



# GUIDING PRINCIPLES

These Guiding Principles were adopted by the project advisory committee on February 21, 2019.

**Create a complete community.**

**Design and build a walkable and connected transportation network.**

**Create vibrant public spaces.**

**Preserve views and the natural landscape.**

**Create a sense of identity.**

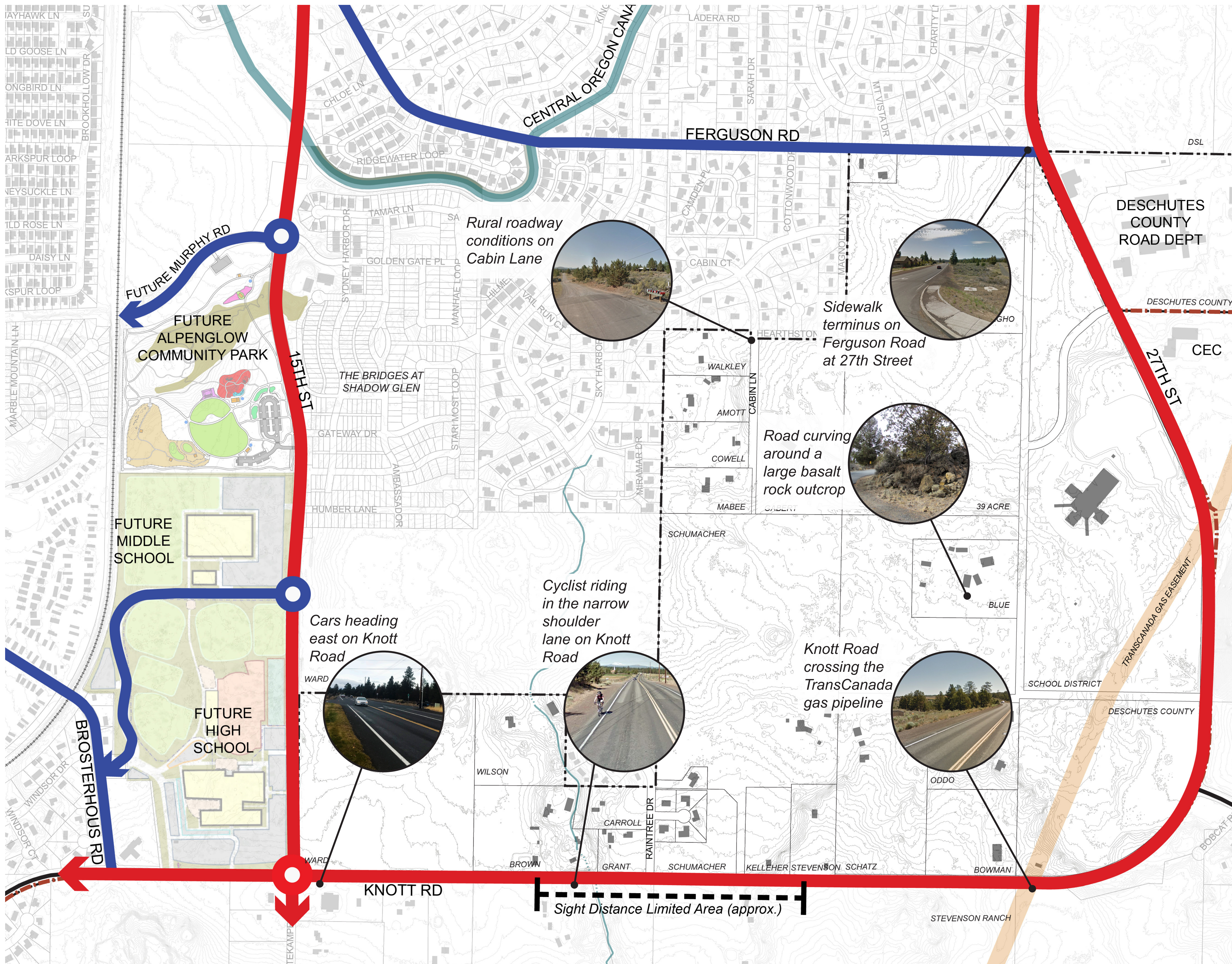
**Support a thriving employment area.**

**Deliver needed infrastructure.**

**Develop an economically viable plan.**

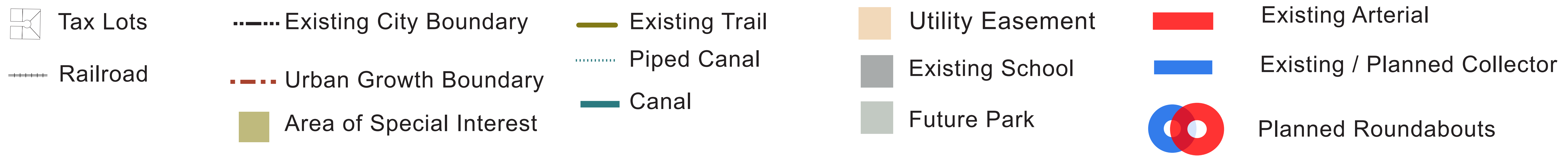


# EXISTING TRANSPORTATION CONDITIONS



## Transportation Issues:

- Traffic on Knott Road and 27th Street exceeds the posted speed limit.
- Limited sight distance due to two ridges on Knott Road creates safety concerns, particularly for turning movements around Raintree Drive.
- Existing arterials and collectors need to be upgraded to the City's urban standards, including construction of sidewalks and bike lanes.
- Need for new east-west and north-south collectors running through the area to support new neighborhoods and connect 15th Street to Knott Road, Ferguson Road, and 27th Street.
- Steep topography and basalt rock outcrops may present challenges for new road construction.
- Future collectors should, where possible, follow lot lines and limit impacts to future development.

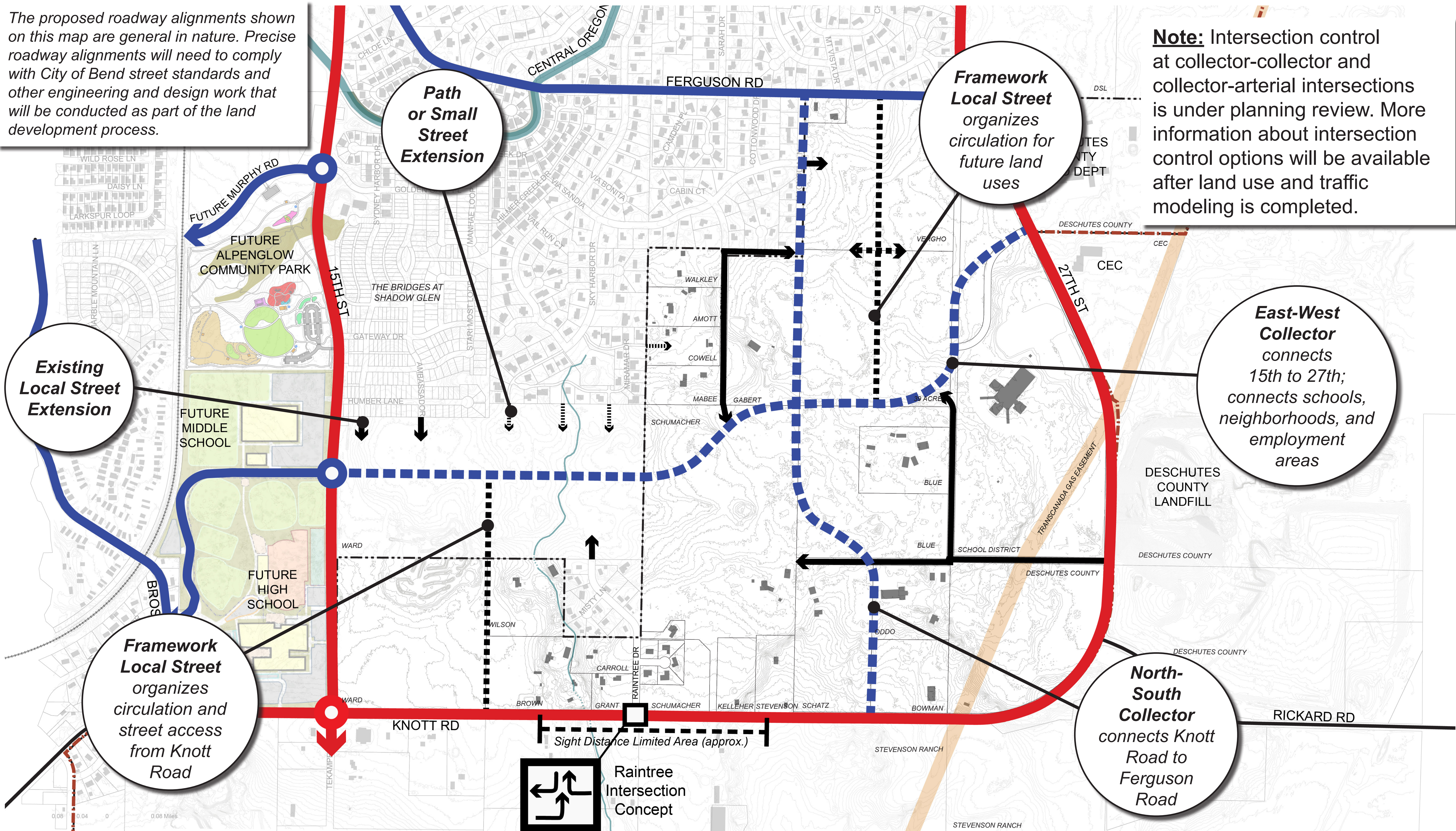




# DRAFT STREET PLAN: A STREET FRAMEWORK FOR THE SOUTHEAST AREA

The proposed roadway alignments shown on this map are general in nature. Precise roadway alignments will need to comply with City of Bend street standards and other engineering and design work that will be conducted as part of the land development process.

**Note:** Intersection control at collector-collector and collector-arterial intersections is under planning review. More information about intersection control options will be available after land use and traffic modeling is completed.



- █ Existing Arterial
- █ Existing / Planned Collector
- - - Proposed Collector/Neighborhood Collector
- ⊙ Planned Roundabouts
- Framework Local (Location TBD)
- Framework Local (Existing ROW)
- ➔ Street Extension
- ⋯➔ Street or Path Extension (TBD during development review)