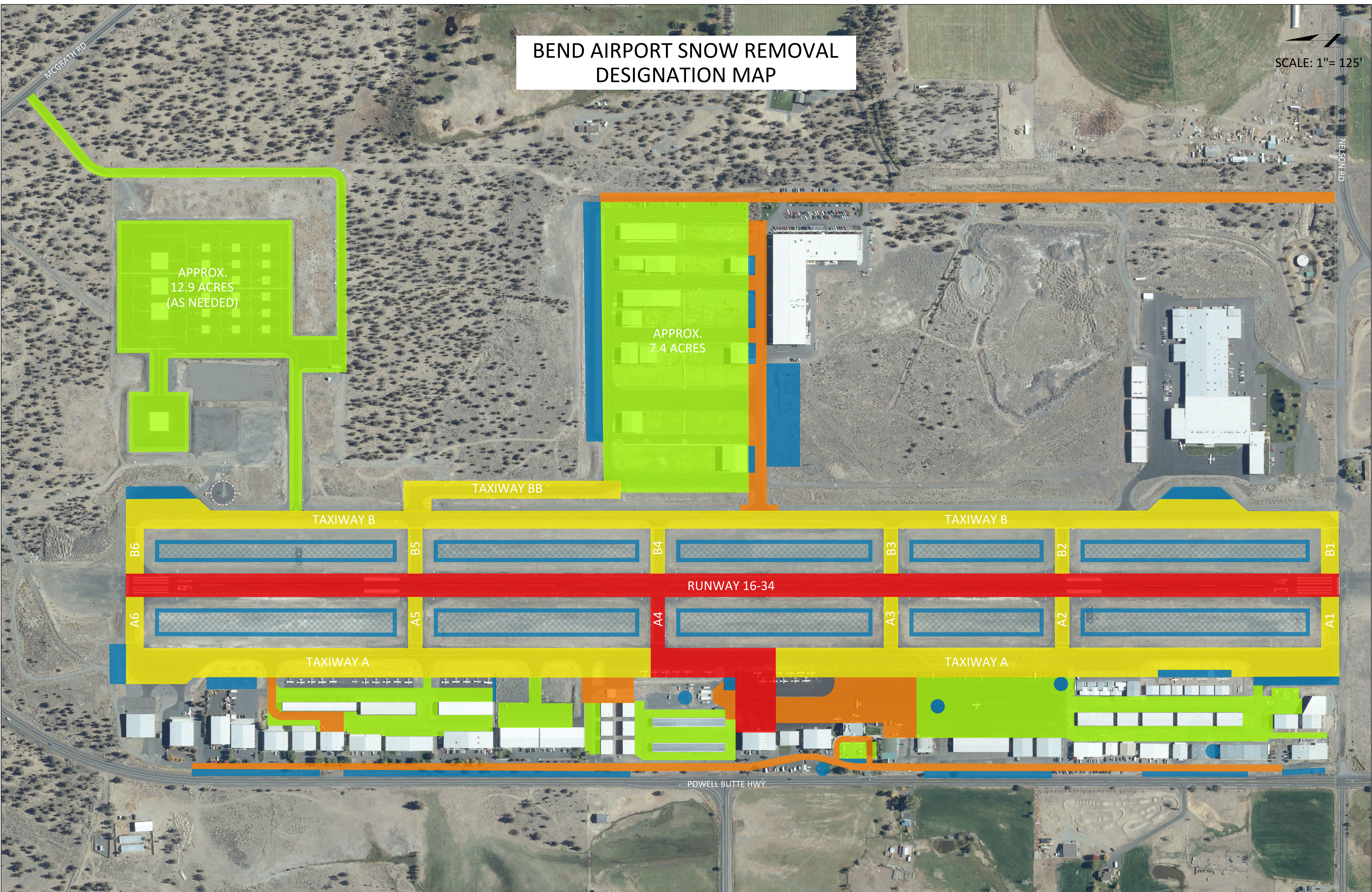


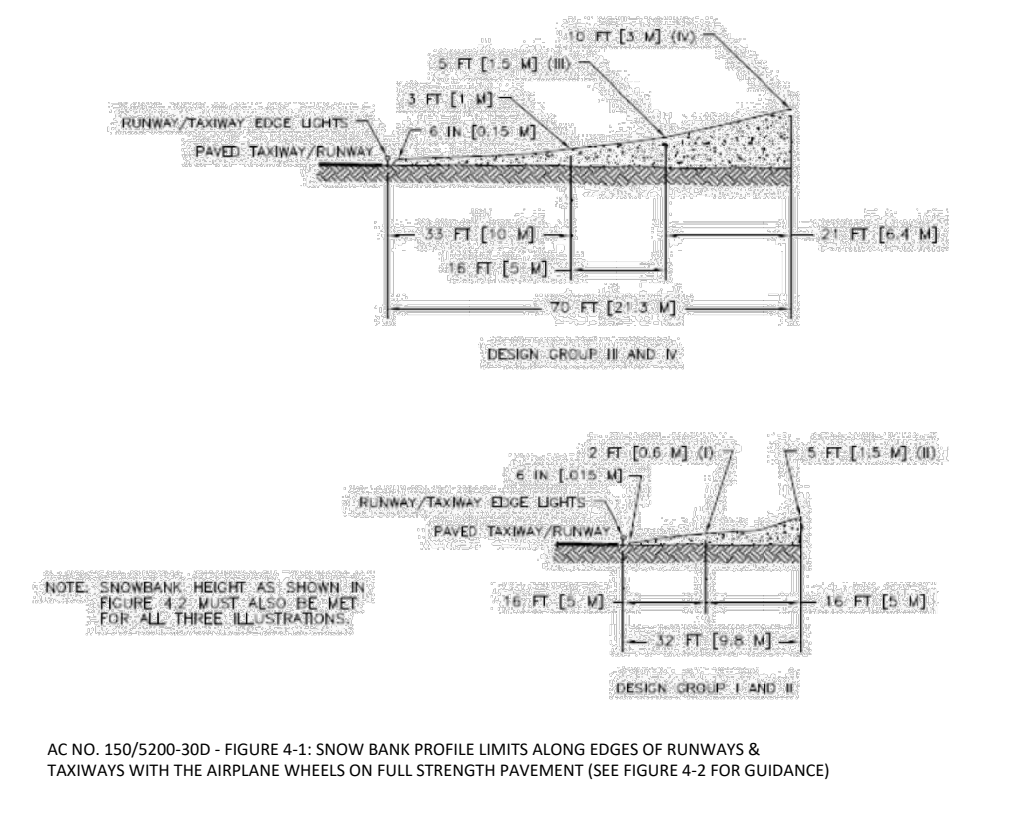
# BEND AIRPORT SNOW REMOVAL DESIGNATION MAP

SCALE: 1" = 125'



- PRIORITY 1 - RUNWAY & AIRLINK CONNECTORS
- PRIORITY 2 - FUEL ISLAND, ACCESS ROADS (>8"), FBO PARKING, EPIC/AERO
- PRIORITY 3 - PARALLEL TAXIWAY & CONNECTOR TAXIWAYS
- PRIORITY 4 - HOA, ACCESS ROADS (<8"), HANGAR ACCESS, AUTO PARKING
- SNOW STORAGE AREAS
- SNOW BANK PROFILE - SEE FIGURE 4-1

- NOTES:**
1. RUNWAY SAFETY AND AIRLINK ACCESS SHALL BE HIGHEST PRIORITY.
  2. CAUTION SHALL BE EXERCISED WHEN OPERATING TO AVOID CONFLICT WITH AIRCRAFT.
  3. RADIO, AVIATION ORANGE FLAG, AND FLASHING BEACON REQUIRED.
  4. SNOWPLOW CONTRACTOR OPERATOR WILL ISSUE AND CLOSE NOTAMS.
  5. PLAT AT 2" WITH NORMAL SNOW. VERY SOFT SNOW OR SLUSH MAY REQUIRE PLOWING AT LESSER DEPTHS.
  6. FORECASTS FOR FREEZING AFTER THAW MAY REQUIRE PLOWING TO AVOID RUTS.
  7. LIGHTS, REFLECTORS, TAXIWAY SIGNS, SIGN MOUNTING PADS, CONCRETE VAULT LIDS, AND CURBS MUST BE AVOIDED.
  8. GRAVEL, DIRT, AND ROCKS MUST BE REMOVED IF DRUG ON TO PAVED SURFACES.
  9. BERMS CANNOT INTERFERE WITH AIRCRAFT WING.
  10. PROOF OF INSURANCE IS REQUIRED.



CITY OF BEND

PREPARED BY: M. STUART, CITY OF BEND. PRINT DATE: DEC 18, 2018. SOURCE: CITY OF BEND, DESCHUTES COUNTY