

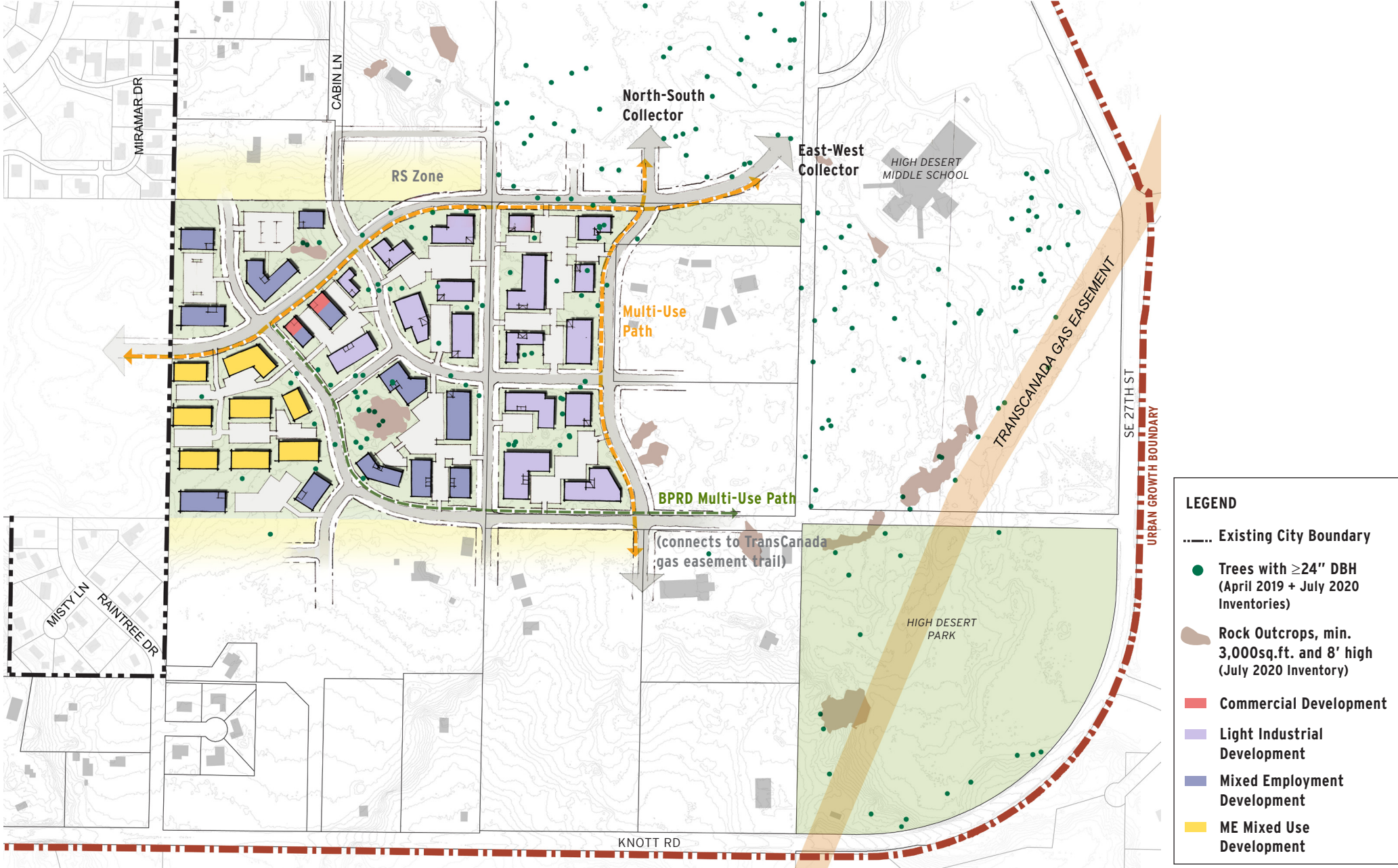
**LEGEND**

- ..... Existing City Boundary
- Trees with ≥24" DBH (April 2019 + July 2020 Inventories)
- Rock Outcrops, min. 3,000sq.ft. and 8' high (July 2020 Inventory)

\*July 2020 inventory only on Schumacher, Blue, Otto, School and Park District properties

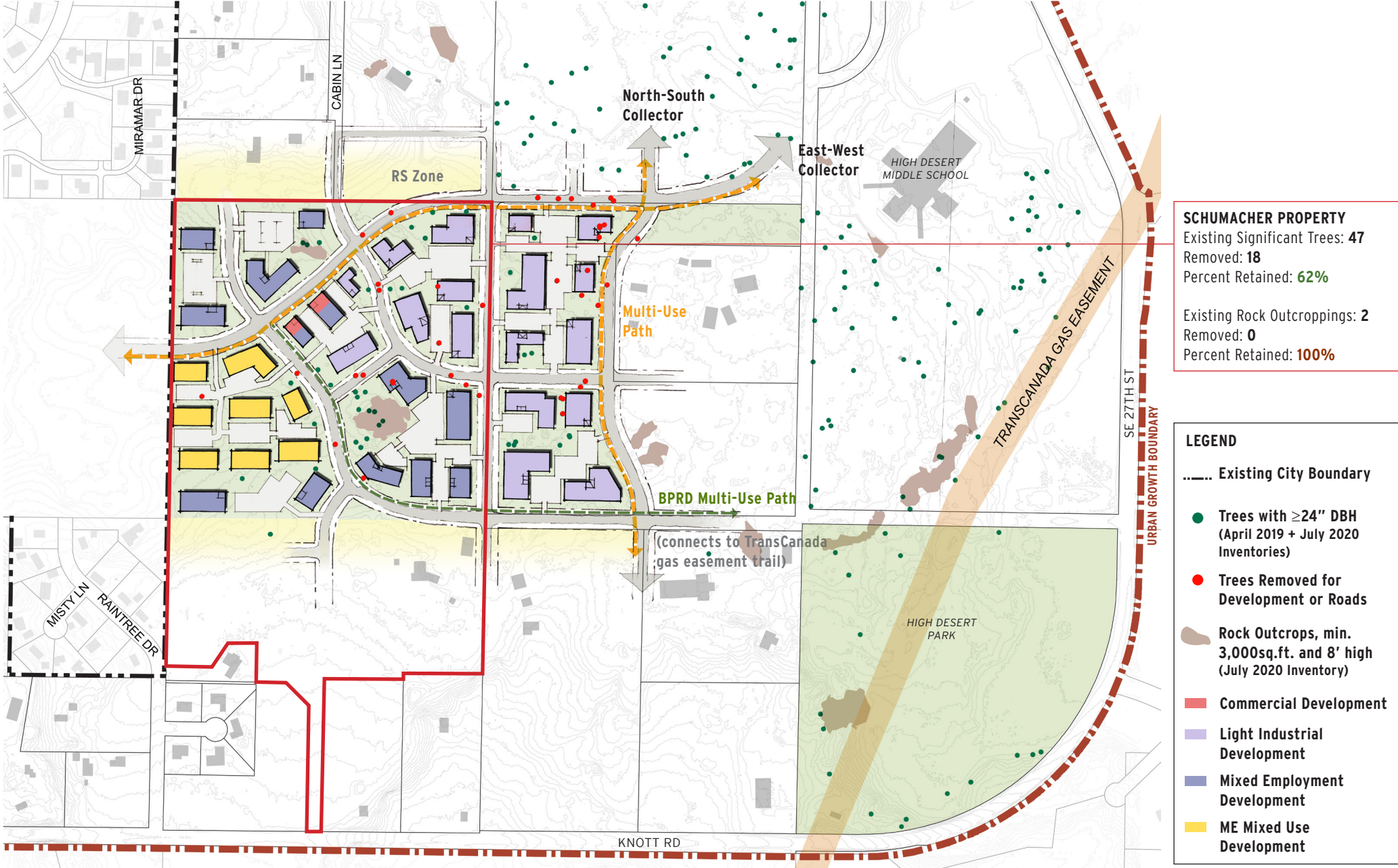
**LIGHT INDUSTRIAL-MIXED EMPLOYMENT SITE STUDY**  
**EXISTING TREES AND ROCKS**





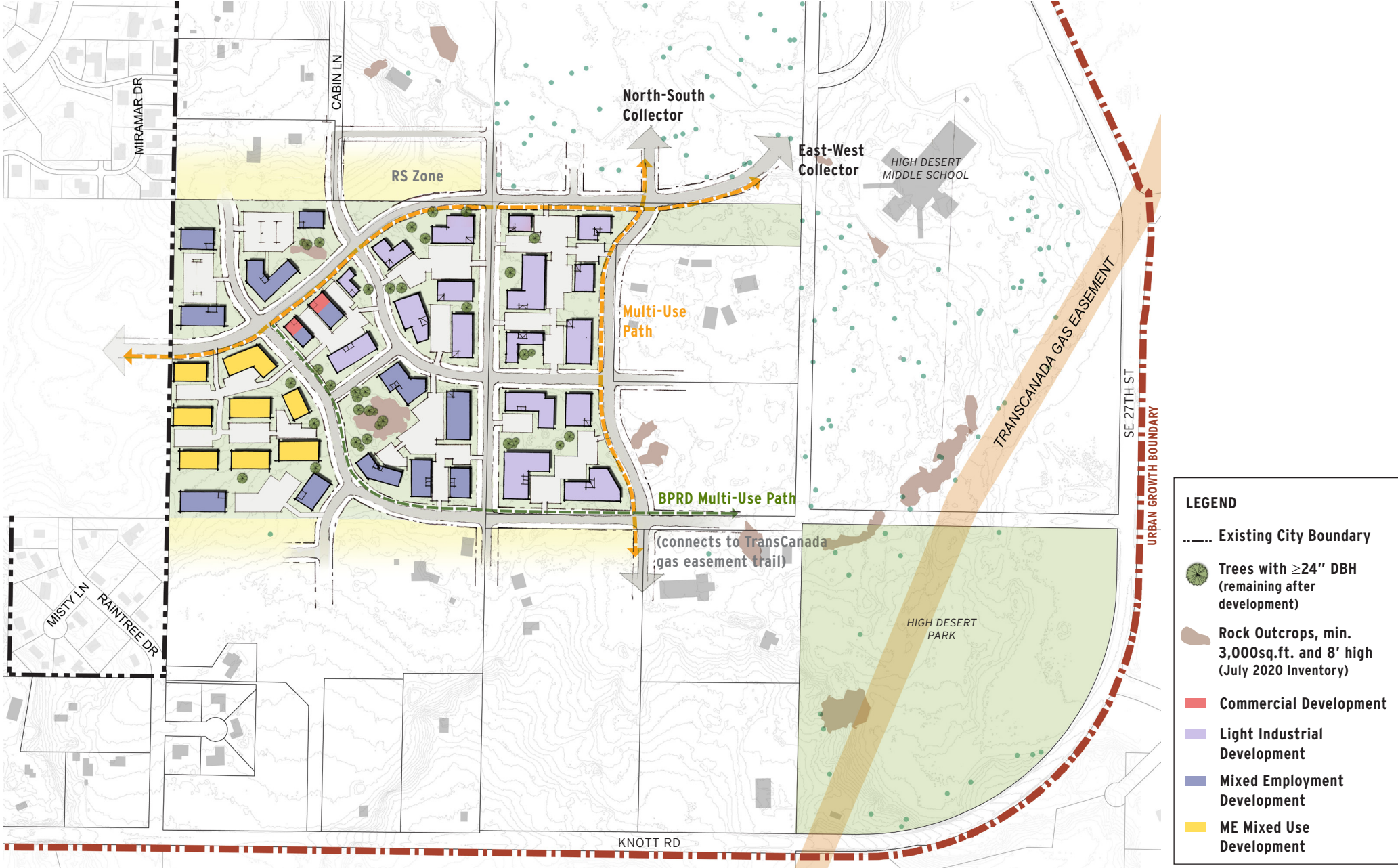
**LIGHT INDUSTRIAL-MIXED EMPLOYMENT SITE STUDY**  
 ALL PRE-DEVELOPMENT SIGNIFICANT ROCKS AND TREES SHOWN





**LIGHT INDUSTRIAL-MIXED EMPLOYMENT SITE STUDY**  
 TREES AND ROCKS IMPACTED BY DEVELOPMENT



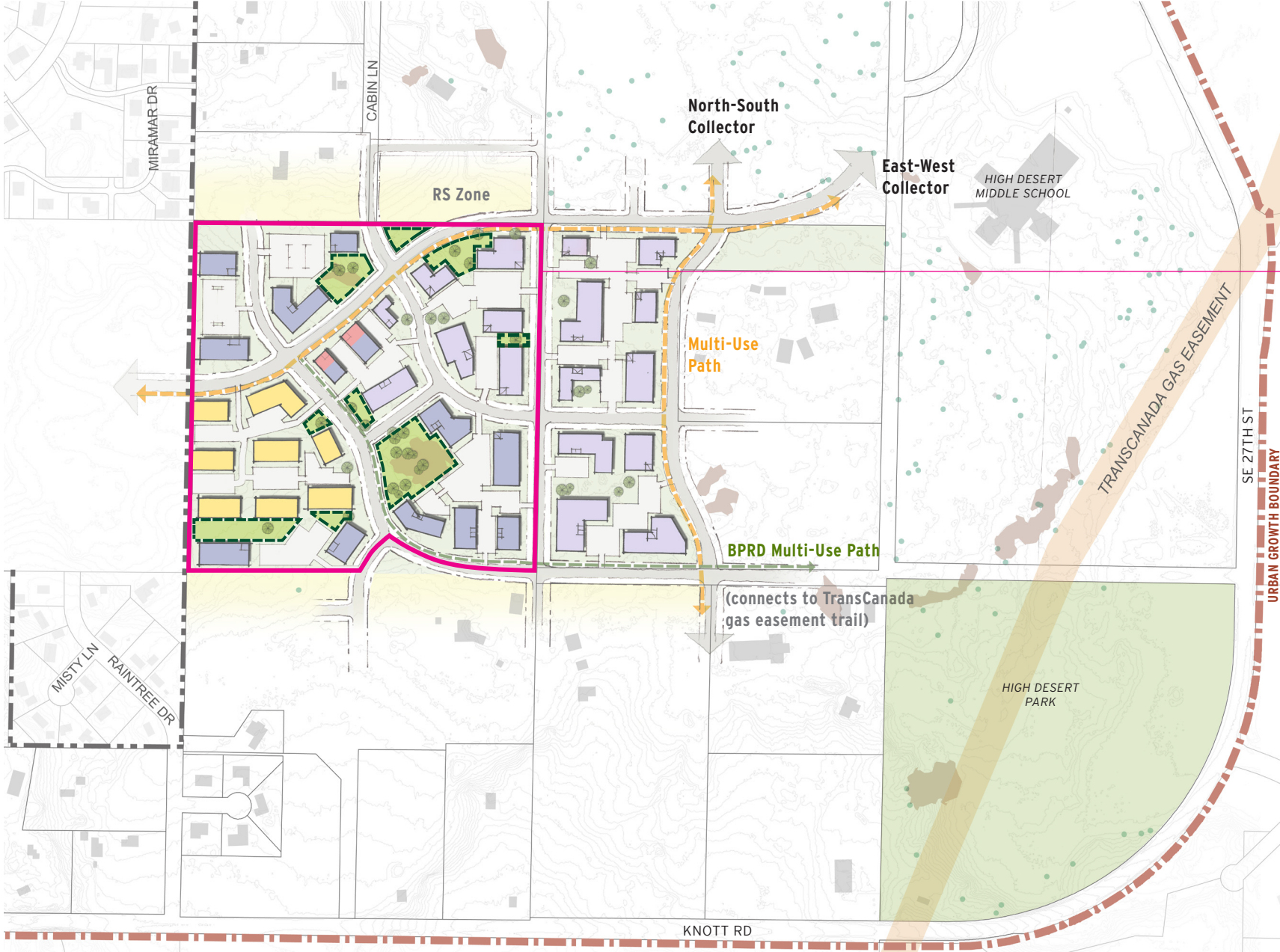


**LEGEND**

- Existing City Boundary
- Trees with  $\geq 24''$  DBH (remaining after development)
- Rock Outcrops, min. 3,000sq.ft. and 8' high (July 2020 Inventory)
- Commercial Development
- Light Industrial Development
- Mixed Employment Development
- ME Mixed Use Development

# LIGHT INDUSTRIAL-MIXED EMPLOYMENT SITE STUDY

## TREES AND ROCKS REMAINING AFTER DEVELOPMENT



**development area:**  
39 ac

**open space area:**  
3.9 ac

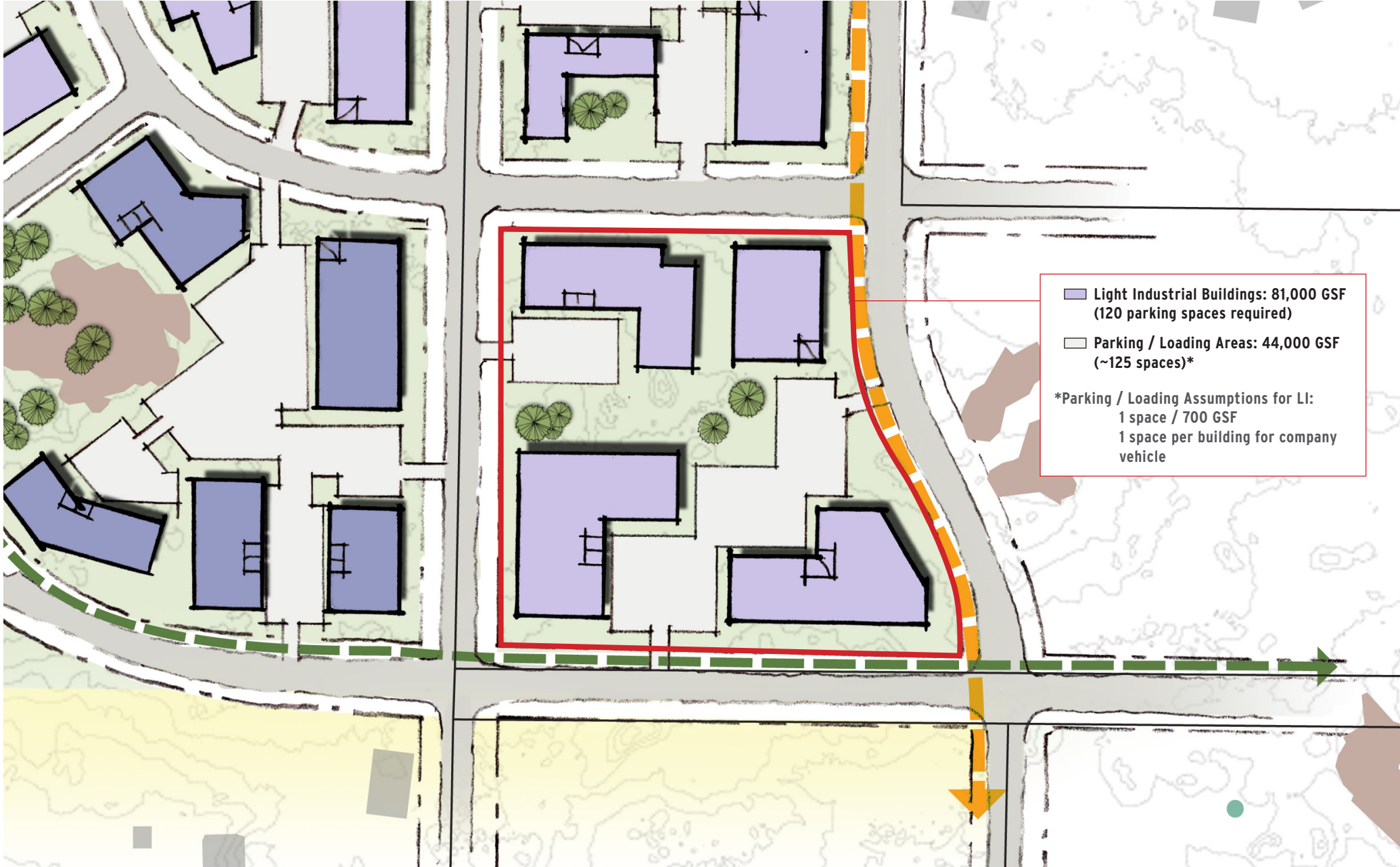
**LEGEND**

- ..... Existing City Boundary
- Trees with ≥24" DBH (remaining after development)
- Rock Outcrops, min. 3,000sq.ft. and 8' high (July 2020 Inventory)
- Commercial Development
- Light Industrial Development
- Mixed Employment Development
- ME Mixed Use Development

# LIGHT INDUSTRIAL-MIXED EMPLOYMENT SITE STUDY

## OPEN SPACE ANALYSIS





**LIGHT INDUSTRIAL-MIXED EMPLOYMENT SITE STUDY**  
 DEVELOPMENT CAPACITY AND PARKING ANALYSIS