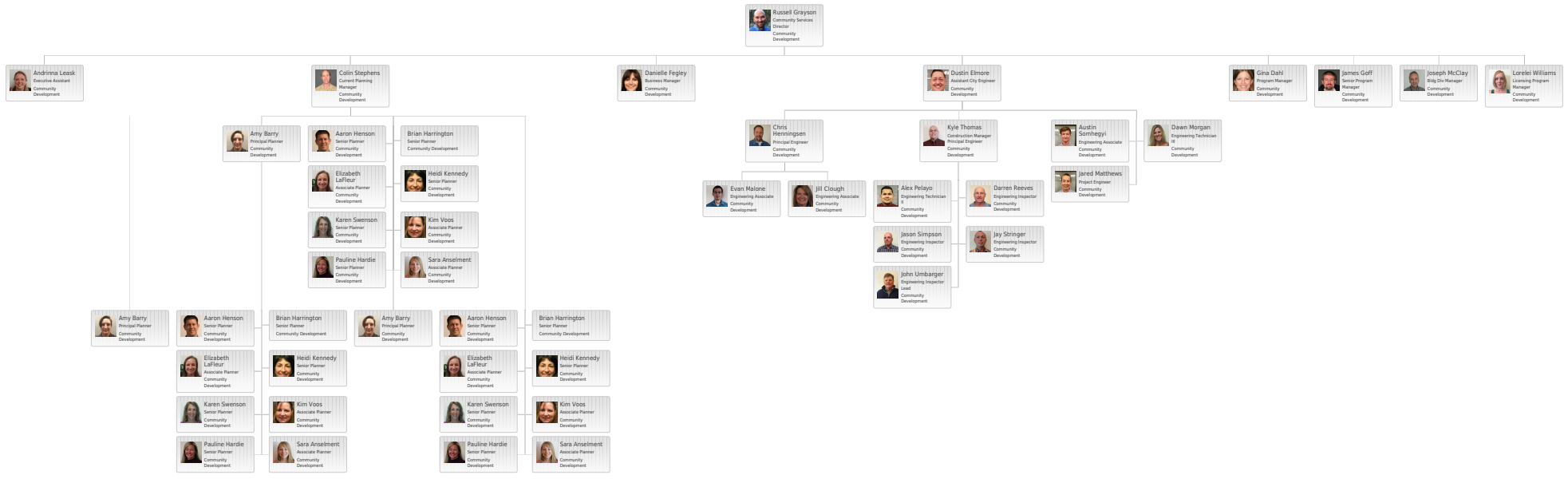
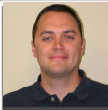


Appendix A.3

Organizational Charts by Department: Utilities, Community Development, EIPD, Streets





Ryan Oster PE, PMP
EIPD Director/City Engineer
O 541-693-2134
C 503-332-9956



Eric Forster PE, PLS, PMP
Assistant City Engineer
O 541-317-3040
C 541-388-7974



George Franklet PE
Principal Engineer
O 541-693-2182
C 541-728-3456



Jessica MacClanahan PE, PMP
Principal Engineer
O 541-330-4003
C 503-544-7321



Dana Wilson
Management Analyst
O 541-388-5566
C 541-213-9851



Adele McAfee
Executive Assistant
O 541-317-3003
C 541-390-5441



Brad Tower PE
Project Engineer
O 541-323-8528
C 541-588-2651



Chad Towell
Engineering Inspector Lead
O 541-388-5559
C 541-280-0168



Alex Doza EIT
Engineering Associate
O 541-323-8595
C 541-678-2597



Teresa Findley
Program Technician I
O 541 388-5578



Christopher Coleman
Administrative Support Specialist
O 541-330-4012



Josh Swain
Engineering Inspector
O 541-323-8512
C 541-640-6306



Deedee Fraley PE
Project Engineer
O 541-385-6199
C 541-678-3617



Bret Dalrymple
Engineering Inspector
O 541-388-5565
C 541-480-9490



Charanne Stein
Program Coordinator
O 541-323-8597


**Department
Admin Support**



Katherina Barguil
Engineering Tech III
O 541-388-5558
C 541-588-2664



Drew Wells PE
Project Engineer
O 541-388-5526
C 541-588-0581



Brittany Park PE
Project Engineer
O 541-323-8593
C 541-588-0700

**Technical Support
Services**




Lindsey Crowsigt PE
Project Engineer
O 541-617-4520
C 541-588-0675



Patrick Konop
Engineering Inspector
O 541-323-8592
C 541-903-0811



Jake Sherman PE
Project Engineer
O 541-383-4882
C 360-430-4668



Bob DenOuden
Growth Mgt & EIPD
GIS Performance Analyst
O 541-330-4024

**GIS Support
Services**



Rory Rowan PE
Project Engineer
O 541-388-5575
C 541-588-2427



Jason Suhr PE, PMP
Project Engineer
O 541-317-3053
C 541-678-3813



Sinclair Burr PE
Project Engineer
O 541-330-4018
C 503-866-4530



Kevin Bays
Engineering Inspector
O 541-323-8535
C 541-797-4092



Oliver Murray PE
Project Engineer
O 541-693-2183
C 503-679-0847



ENGINEERING

06/03/2020

