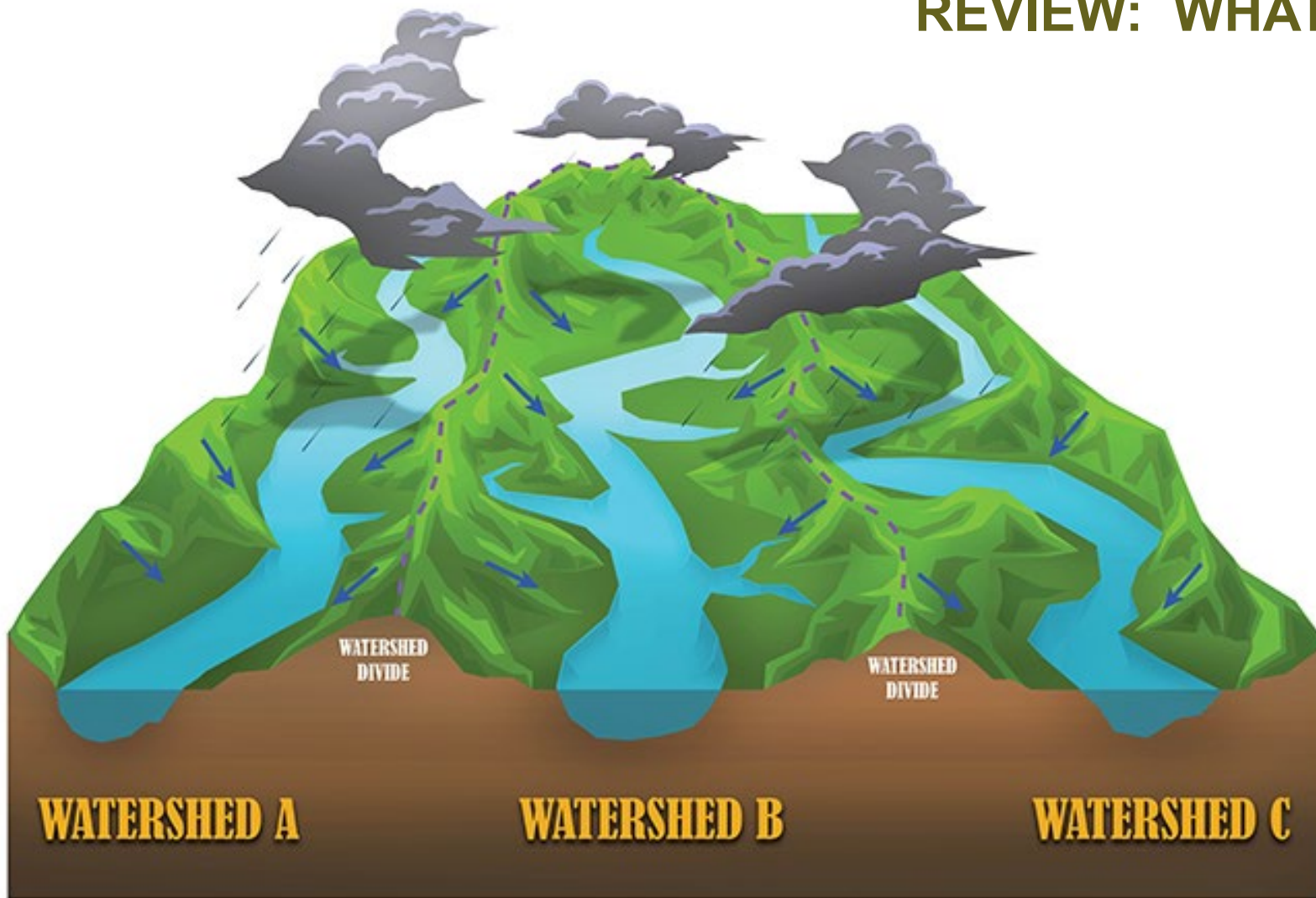


REVIEW: WHAT IS A WATERSHED?



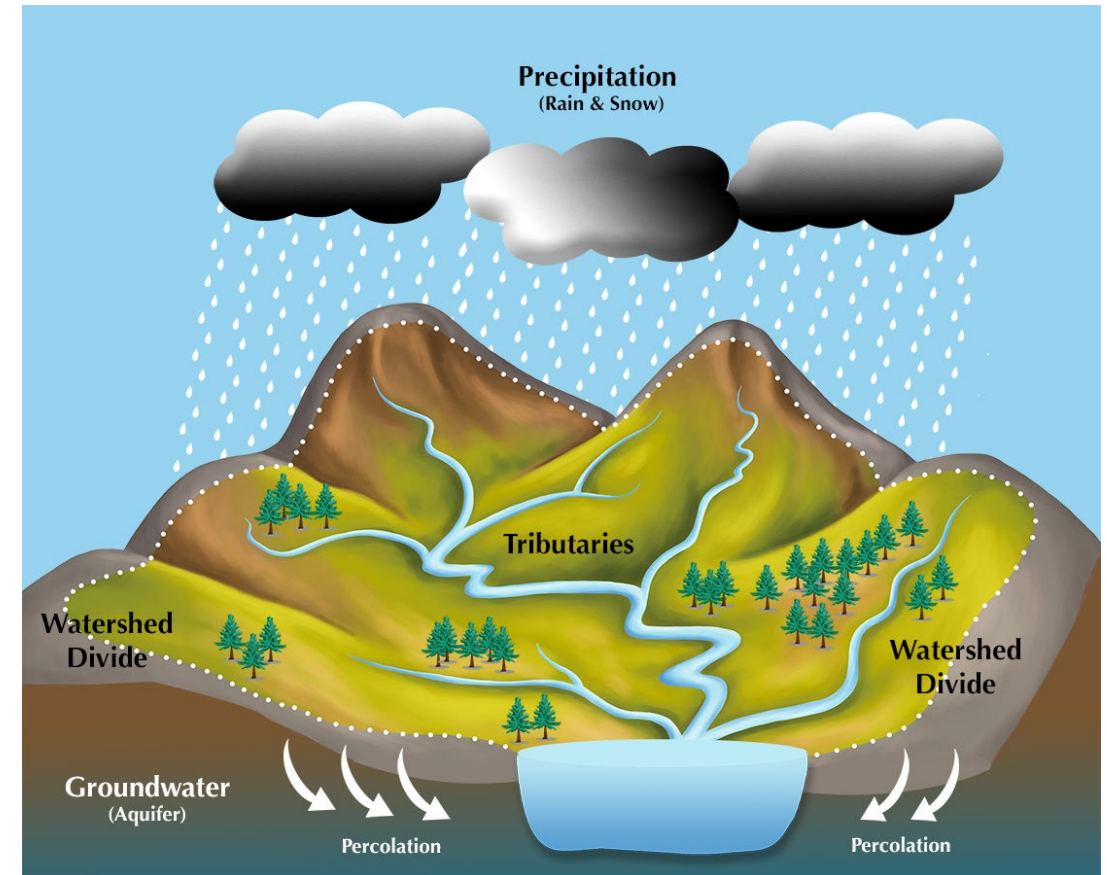
- An area of land that drains water to a common point/outlet.
- The entire area, from ridgetop to ridgetop. This includes water, land, forest, plants, parking lots, streets, buildings, etc.
- Watersheds can be as small as a footprint or large enough to cross international boundaries.
- Wherever you are right now, you are in a watershed.



THESE ARE OUR WATERSHEDS:

1. Bend Municipal Watershed
2. Upper Deschutes Watershed
3. Columbia River Basin

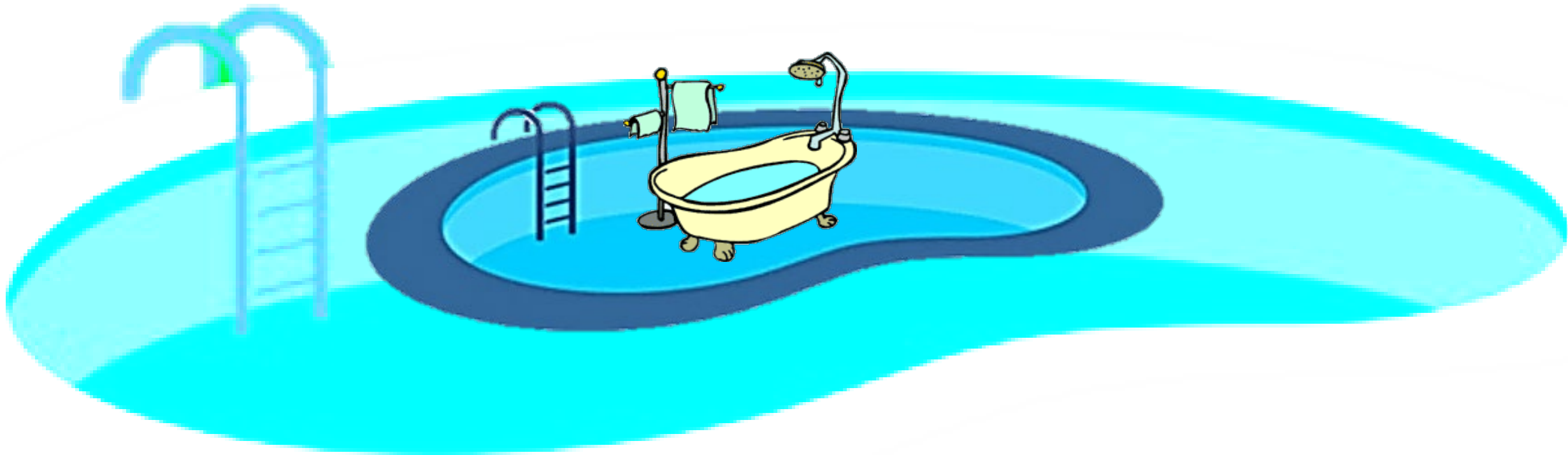
How can we have more than one watershed?
Just like creeks can drain into rivers, smaller watersheds can drain into larger watersheds.



WHERE OUR WATER COMES FROM



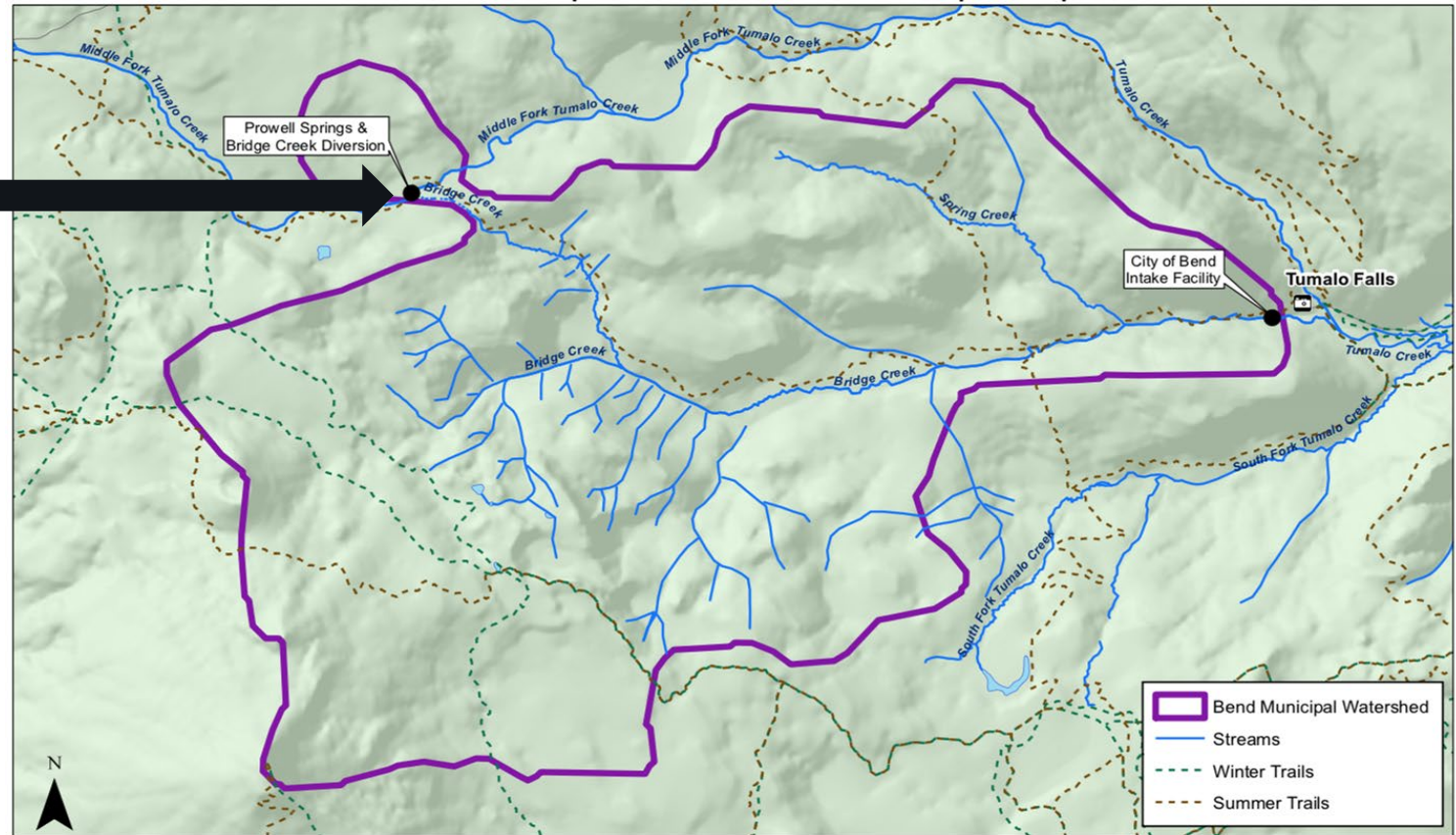
Another way to understand how we can have more than one watershed is to imagine the small watershed (Bend Municipal Watershed) as a bathtub. Any drop of water that falls within the bounds of that bathtub reaches the drain. Now, picture that bathtub is inside of a pool (Deschutes Basin), and that pool is inside of a bigger pool (Columbia River Basin).



BEND MUNICIPAL WATERSHED



Prowell Springs



Our primary source of water is surface water from Bend Municipal Watershed, located in the Deschutes National Forest. We will learn more about this water and how it is treated in lesson two.

How is our watershed separated from other watersheds? Topographic divides (high points/ridges) separate watersheds. See how the map's purple line showing our watershed boundary is running along the high points and ridge tops.

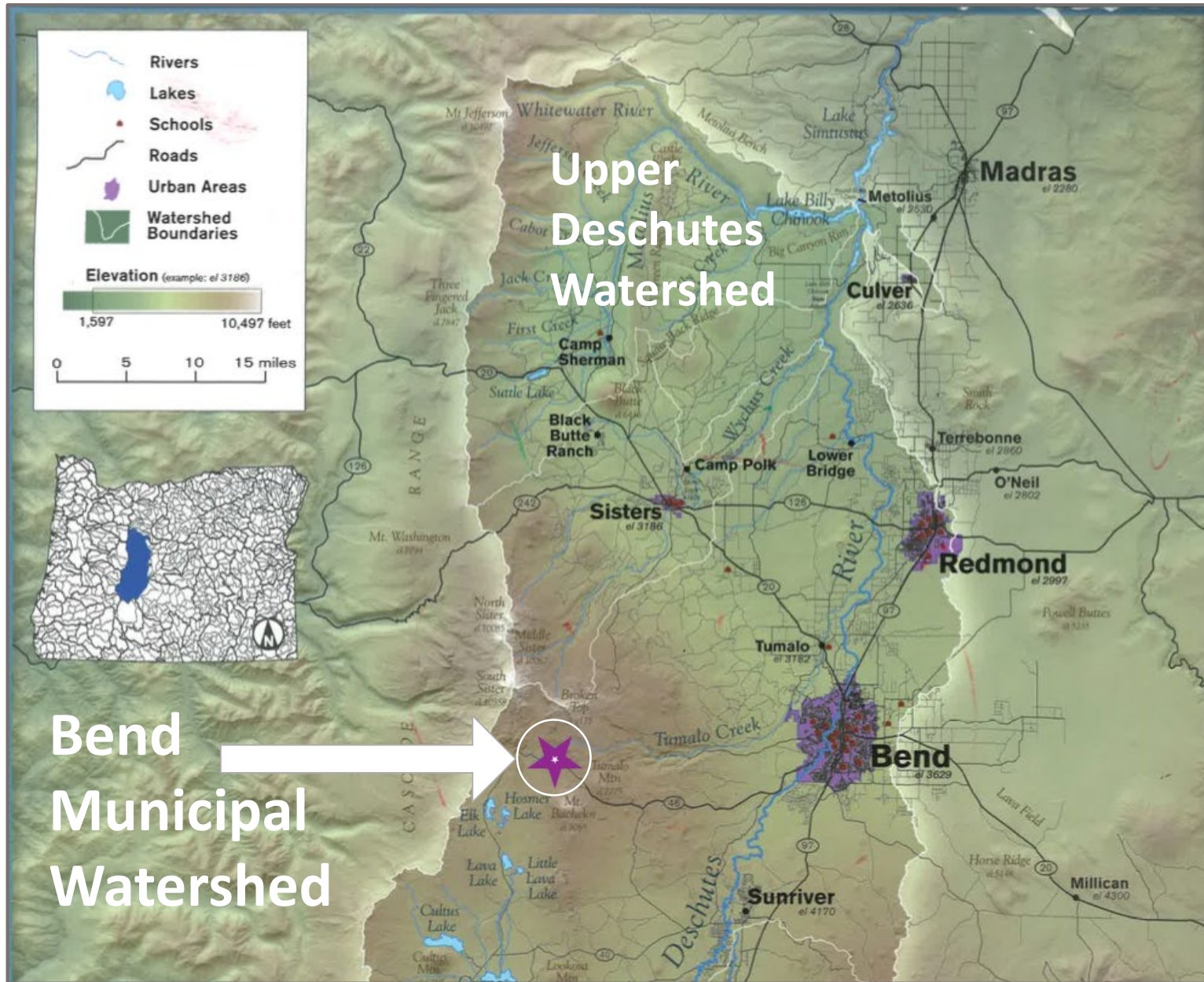


OUR WATERSHEDS

City of Bend's primary water source is surface water from the **Bend Municipal Watershed**. (Located 15 miles west of Bend - See star on map.)

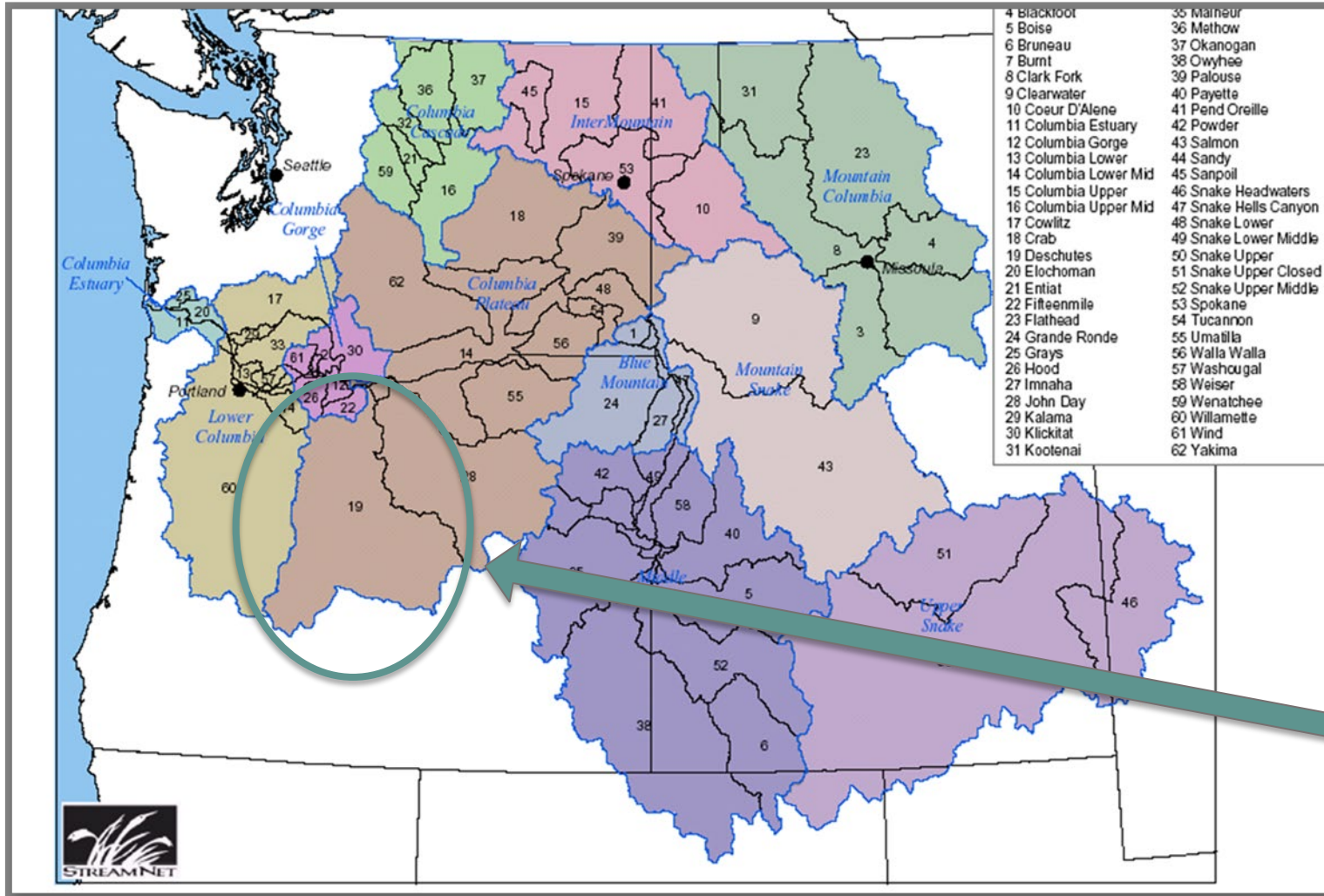
The Bend Municipal Watershed is part of the **Upper Deschutes Watershed**.

The Deschutes Basin contains many watersheds. The Bend Municipal Watershed is one of them.





OUR WATERSHEDS



This is the Columbia River Basin. The Columbia River Basin contains many watersheds.

The Upper Deschutes Watershed drains into the Columbia River Basin.

Can you locate Central Oregon on this map?

Here is the Deschutes Basin





OUR WATERSHEDS



This map shows most of the Columbia River Basin.

Most of the water enters the Columbia River before flowing to the Pacific Ocean.

- How many states are included in this watershed?
- How many countries?



REVIEW: OUR WATERSHEDS

1. Bend Municipal Watershed

This watershed is the source of all Bend's surface water, City of Bend's primary source of water. (Located in the Deschutes National Forest about 15 miles outside of Bend.)

2. Upper Deschutes Watershed

This local watershed includes the deep Deschutes Regional Aquifer that is our groundwater source.

3. Columbia River Basin

This is a large watershed that flows into the Pacific Ocean and includes large portions of Idaho, Oregon and Washington, the western part of Montana, very small portions of Nevada, Utah and Wyoming, and a portion of Canada.