

Cleveland Commons

HOUSING IMPACT LLC

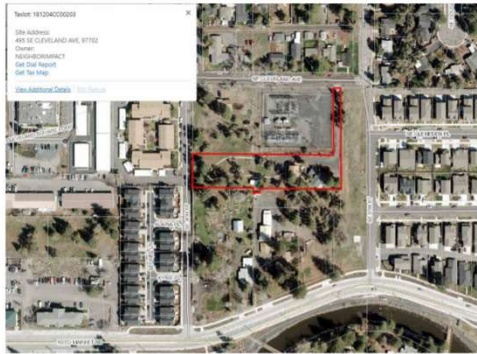
Cleveland Commons

- ▶ 31-34 Units of Permanent Supportive Housing for Chronically Homeless households
- ▶ Located between Cleveland Avenue, 4th St., Reed Market, and 5th St.
- ▶ Site currently owned by Neighbor Impact and operated as 5 transitional housing units



Preliminary Design

Permanent Supportive Housing CLEVELAND APARTMENTS



Preliminary Design



Cleveland Apartments
Bend, Oregon
4/24/20



Preliminary Design

Private Residential Space
Community/Office Space

OPPORTUNITIES

- Residents and services under one roof.
- Multiple amenity spaces.
- Laundry in building.
- Maximum amount of units.

CHALLENGES

- Confirm parking count and variance with City.
- Back access need to coordinate with power station to see if we can borrow land for proper 24' wide drive aisle.
- Least amount of open space.
- As drive possible right of way dedication will affect the design.

Cleveland Apartments
Bend, Oregon
4/24/20

Preliminary Design

	SF	Studio	One-Bedroom	Total Units
1st Level	10,518	6	6	12
2nd Level	10,518	6	6	12
3rd Level	10,518	6	6	12
TOTAL	31,554	18	18	36

Private Residential Space
Community/Office Space

100% LEVEL

101% LEVEL

Cleveland Apartments
Bend, Oregon
4/24/20

Planned Financing Sources

- ▶ County ARPA Funds -\$2 million committed
- ▶ OHCS Dedicated PSH Funding -\$4.63 million competitive
- ▶ Conventional Mortgage Debt supported by rent subsidies/Project Based Vouchers-\$1.125 million
- ▶ City of Bend AHF award -\$700K
 - ▶ Total Capital Cost -\$8.455 million
- ▶ Up to \$10K per unit per year in services subsidies – OHA PSH commitment plus federal Medicaid subsidies

Proposed Schedule

- ▶ 3/22 – Application for Competitive OHCS PSH funding
- ▶ 1/23 – Close financing begin construction
- ▶ 6/24 – Open Cleveland Commons



Questions?