

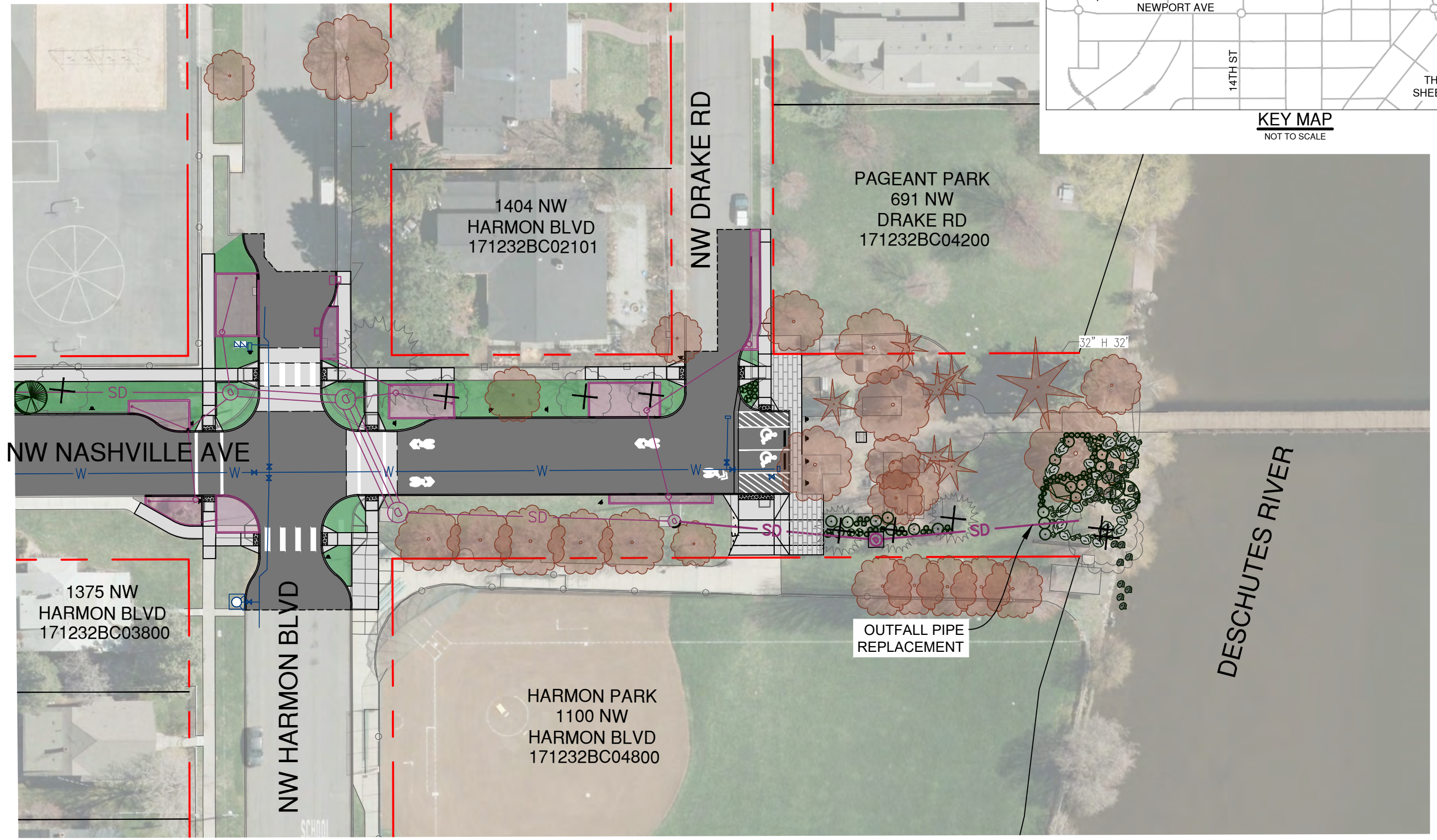
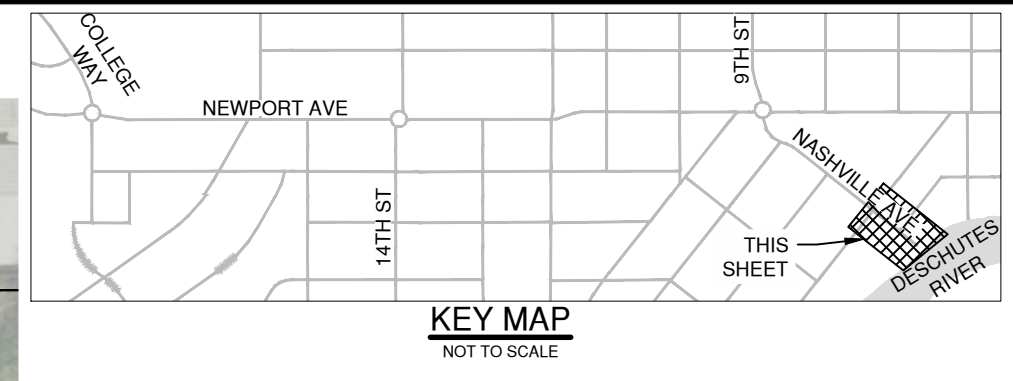
8. NASHVILLE AVE - 9TH ST TO HARMON BLVD

NOT TO SCALE

LEGEND

- ASPHALT PAVING
- EXTG RIGHT-OF-WAY
- CONCRETE
- STORMWATER PLANTER
- SIDEWALK BUFFER
- SD PROPOSED STORM LINE
- SS PROPOSED SANITARY LINE
- W PROPOSED WATER LINE
- X EXISTING TREE TO BE REMOVED
- ★ EXISTING TREE TO BE PROTECTED
- ⊗ PROPOSED TREES AND PLANTINGS

JANUARY 2022
DRAFT CONCEPT
LAYOUT SUBJECT TO REVISION



9. NASHVILLE AVE - HARMON BLVD TO DESCHUTES RIVER

NOT TO SCALE

LEGEND

- ASPHALT PAVING
- EXTG RIGHT-OF-WAY
- PROPOSED STORM LINE
- CONCRETE
- STORMWATER PLANTER
- PROPOSED SANITARY LINE
- SIDEWALK BUFFER
- PROPOSED WATER LINE
- X EXISTING TREE TO BE REMOVED
- * EXISTING TREE TO BE PROTECTED
- * PROPOSED TREES AND PLANTINGS

JANUARY 2022
 DRAFT CONCEPT
 LAYOUT SUBJECT TO REVISION