

AWBREY GLEN PUMP STATION IMPROVEMENTS

Public Meeting

December 19, 2022 6:00 p.m.

(Please note this meeting will be recorded)



CITY OF BEND

AWBREY GLEN PUMP STATION IMPROVEMENTS

Lisa Cameli, PE; Project Engineer, City of Bend

Brady Fuller, PE; Design Team Project Manager, Jacobs

December 19, 2022

Agenda

- Introductions
- Project Background & Overview
- Project Impacts
- Mitigation of Impacts
- Comments/Questions

Introductions

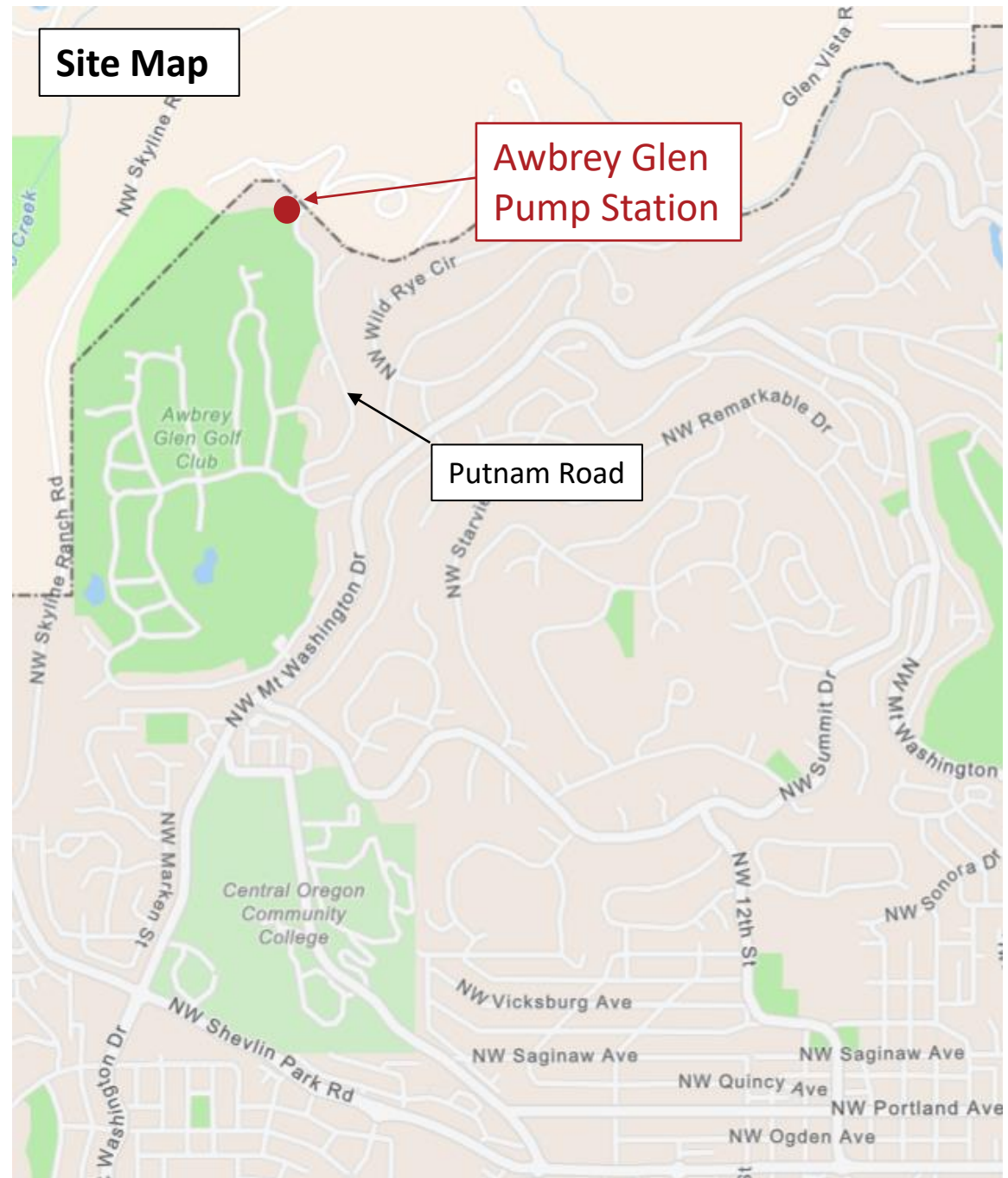
Lisa Cameli, Project Manager, City of Bend

Brady Fuller, Design Team Project Manager, Jacobs

Jeff Conrad - Awbrey Butte NA Land Use Chairperson

Project Overview

- Site Location



Pump Station Background

- Operational since 1993
- Built under agreement with the City of Bend by the site developer (Brooks Resources Corporation)
- Primarily serves the Awbrey Glen HOA area and Golf Course
- Pump Station Capacity 800 gpm
- Identified in the 2014 Collection System Master Plan for installation of emergency generator with automatic controls to start in case of power outage. Scope expanded by Utilities Department to improve operations and work safety

Project Overview

Project Purpose:

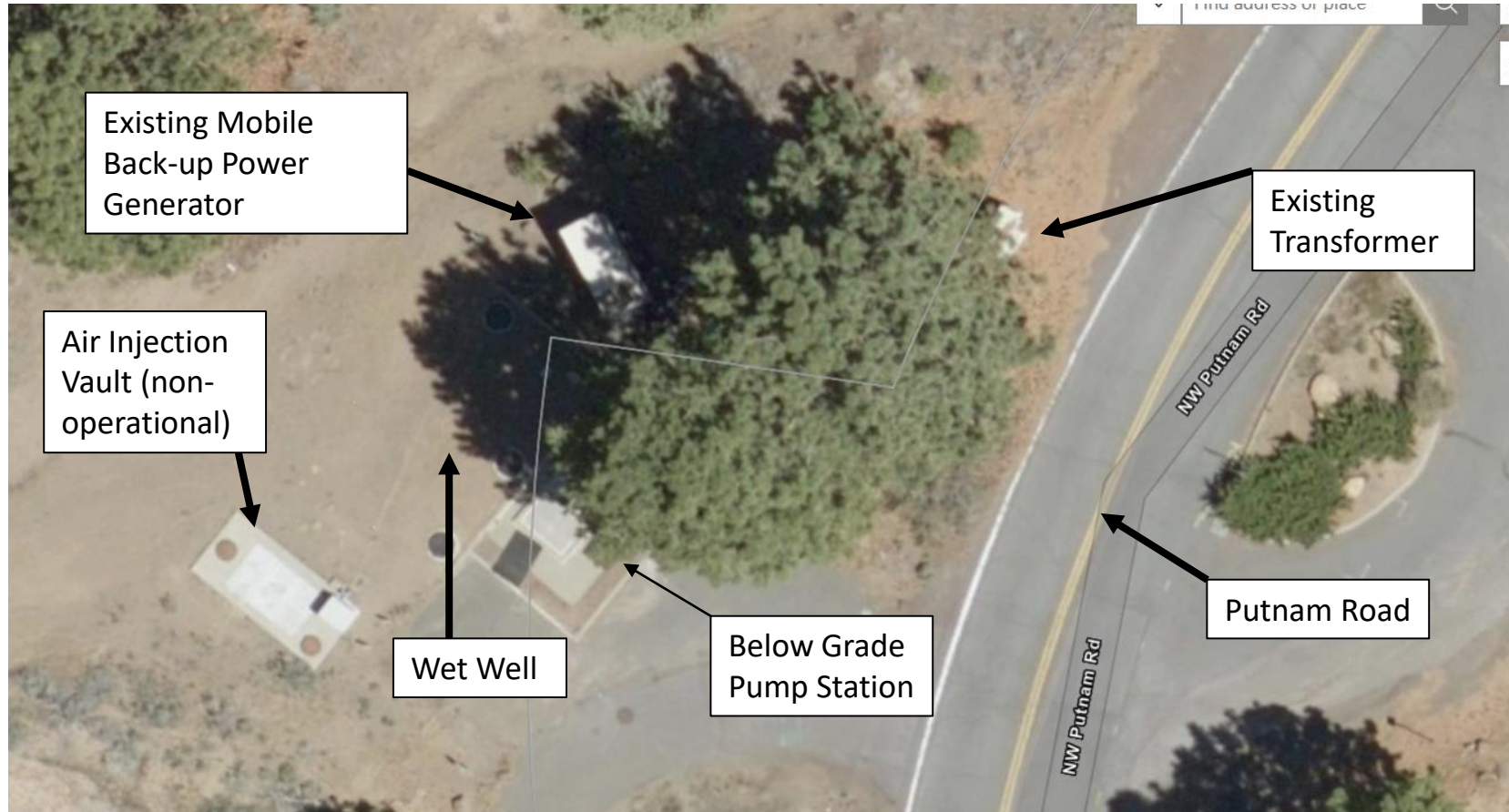
- Address critical recurring maintenance challenges
- Improve pump station mechanical and electrical controls, improve worker safety, provide code-compliant dry well ventilation
- Add resiliency/redundancy to pump system to avoid failures
- Part of ongoing asset management (existing facilities)

Land Use Permitting:

- City of Bend Conditional Use Permit required

Project Overview

Existing Site – Awbrey Glen Pump Station



Existing Site



CITY OF BEND

Existing Pumps

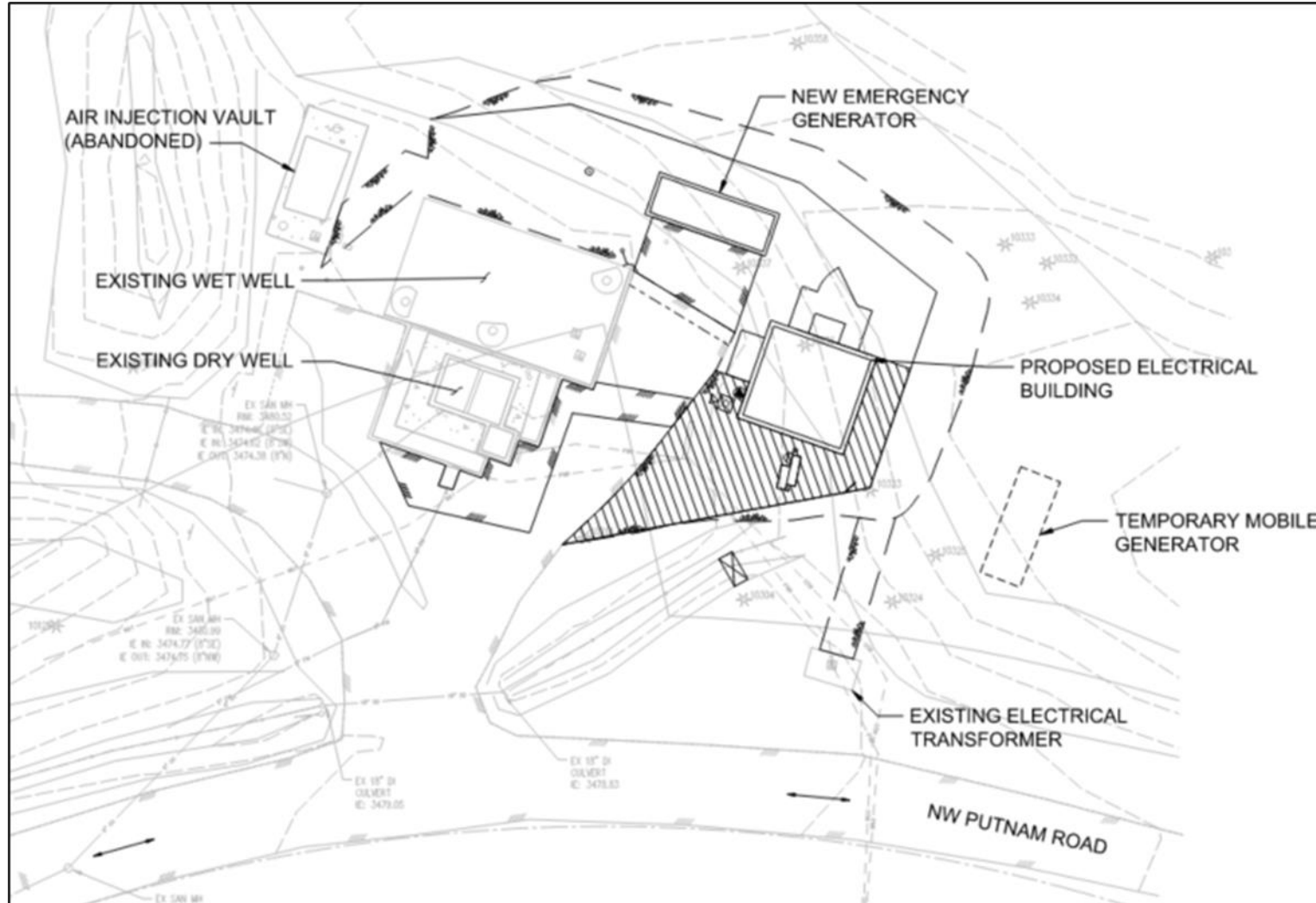
Project Overview

Items of Work

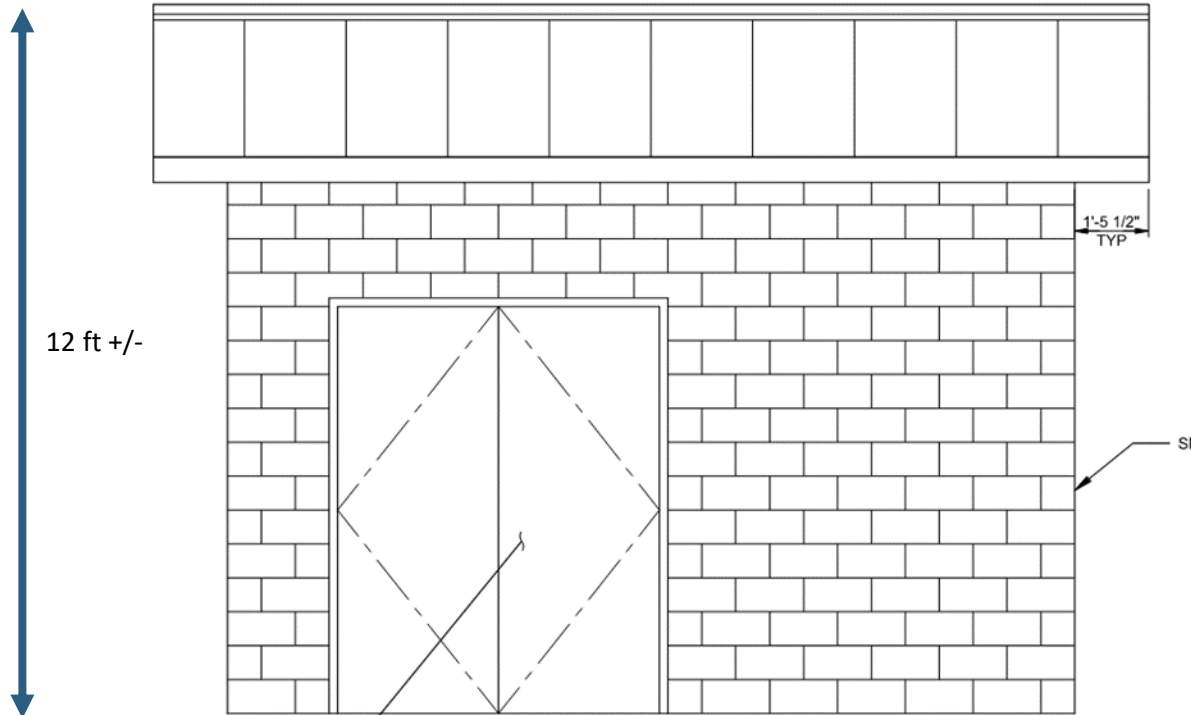
- Replace aging and non-code-compliant electrical and mechanical equipment
- Replace existing antenna with new 20-foot communications antenna
- Replace trailer-mounted emergency generator with new fixed generator
- Construction of new 200-250 sf electrical controls building
- Asphalt and gravel surfacing
- Landscaping



Project Overview – Site Improvement Plan

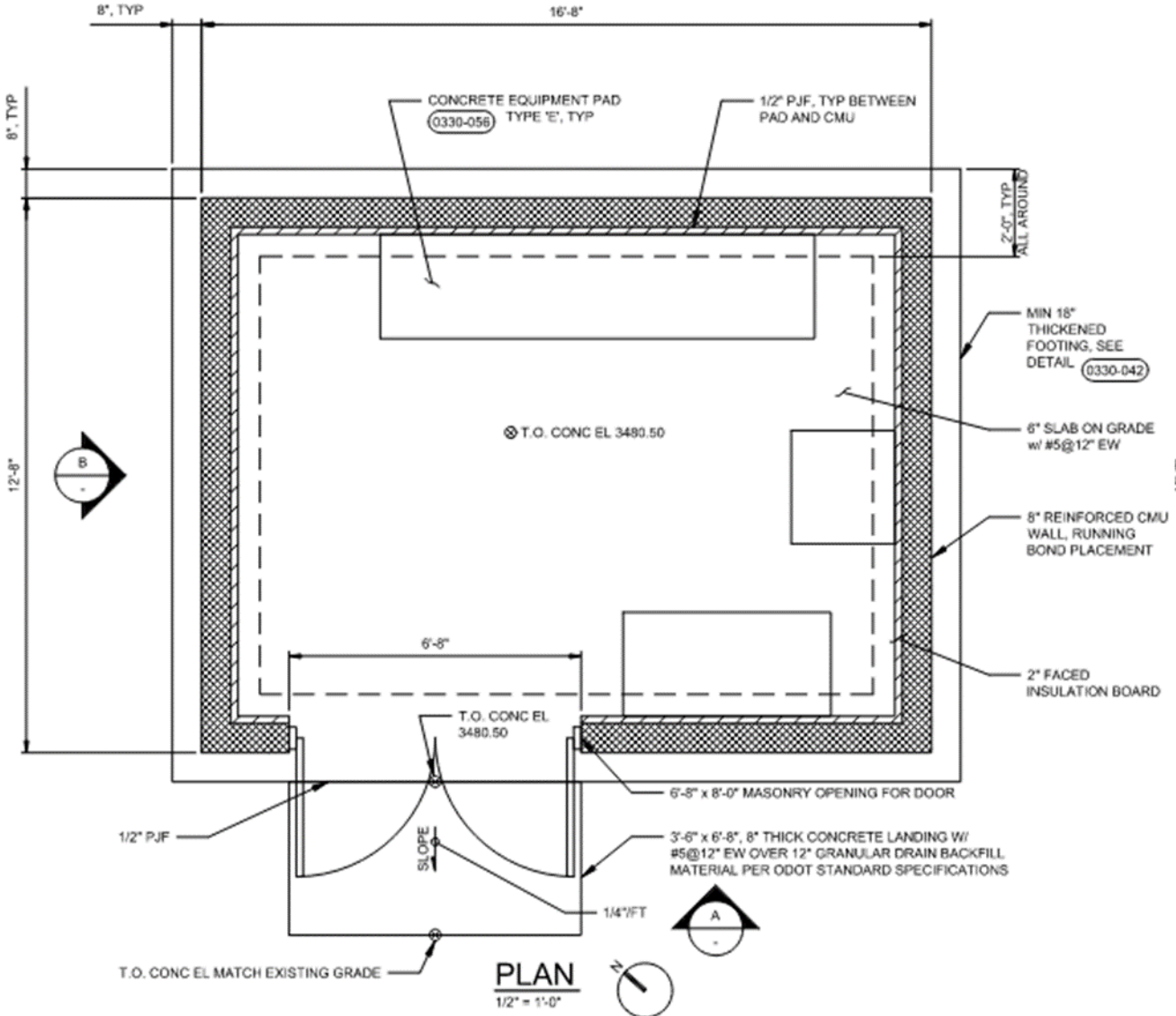


Project Overview – Electrical Building



6'-8" x 8'-0" MASONRY OPENING FOR DOOR, AS SPECIFIED

A ELEVATION
1/2" = 1'-0"



Project Overview – Electrical Building Samples



Sawyer Park Pump Station



Project Impacts & Impact Mitigation

Short-term Impact (During Construction)

- Periodic construction traffic
 - Mitigation:
 - Contractor will minimize interruptions to traffic while moving equipment in and out of the site
- Periodic construction activity noise
 - Mitigation:
 - No sustained need for loud activities
 - City Standard Construction hours to 7:00 a.m. until 6:30 p.m. on weekdays. No holidays, weekends only as approved by City

Project Impacts & Impact Mitigation

Long-term Impact

- Improved worker safety
- Increased pump station resilience
- No change in operation or capacity
- Visual impact of new electrical building
 - Mitigation:
 - City plans to provide code-required screening using vegetation or other screening options
 - Above ground elements to be colored similar to the surrounding area
- Periodic noise levels during use of emergency generator
 - Mitigation:
 - Only used in the case of power outage
 - Generator will be designed and installed to maintain code compliance (Ordinance 2188) for night-time sound attenuation levels in a residential community (60dBA)



Project Schedule

Current Schedule

- Design finalized – January 2023
- Permitting – March 2023
- Bidding and Contracting – April 2023 – July 2023
- Construction – Start late Summer 2023 through 2024
 - Project has long lead-times (up to 56 weeks) for specialized equipment

Comments?

Questions?

Thank you!

To stay updated please visit the project website at:

www.bendoregon.gov/sewer-improvements

Accommodation Information for People with Disabilities



To obtain this information in an alternate format such as Braille, large print, electronic formats, etc. please contact Lisa Cameli, Project Engineer at Lcameli@bendoregon.gov or 541-330-4042; Relay Users Dial 7-1-1.

Extra Slides...

Site Plan

