



CITY OF BEND

CAAB Subcommittee

Core Area Development Partnership Program

November 14

Public Comment

Please use the Raise Hand function and you will be called on.

If you are on the phone:

*9 to raise your hand

*6 to mute/unmute



DISCUSSION QUESTIONS

WHAT?

- What are the Priority Project Types?
 - External or internal?
 - Hard and soft costs?
- Ground level pedestrian zone upgrades that improve street environment & district identity
- Stabilization investments
- Professional assistance (soft costs)



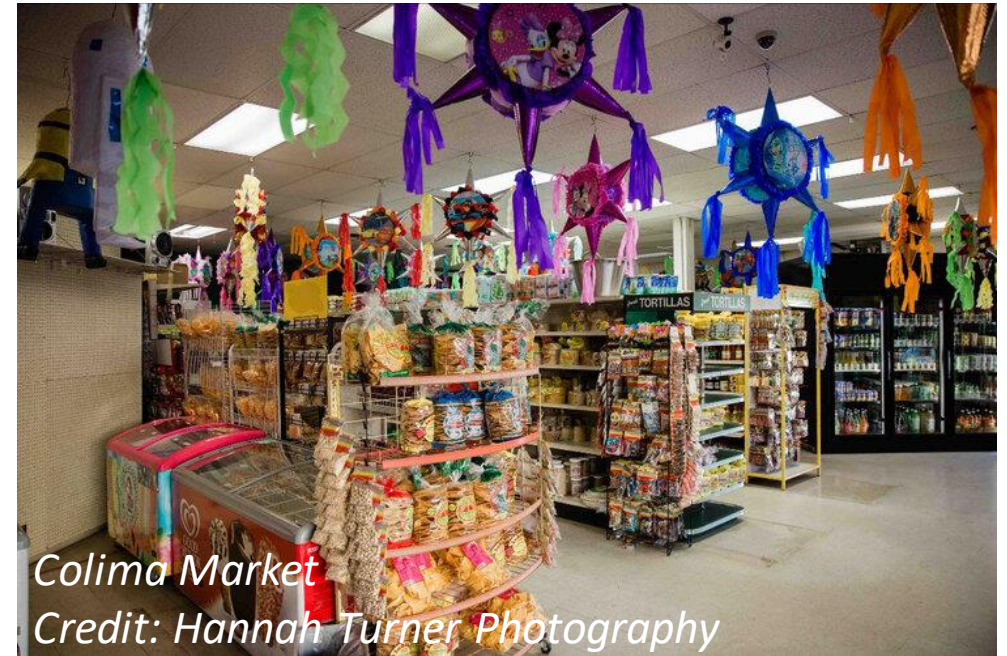
WHY?

- Why are the funds needed? (Problems to Overcome?)
 - Small businesses lack capital to start/improve business and/or rising district rents threatens displacement
 - Improve storefront appearance and pedestrian experience overall
 - Public improvements and upgrades triggered by change in use/building upgrades
 - Incentivize private investment on streets being improved with TIF investments or other priority streets in the Core



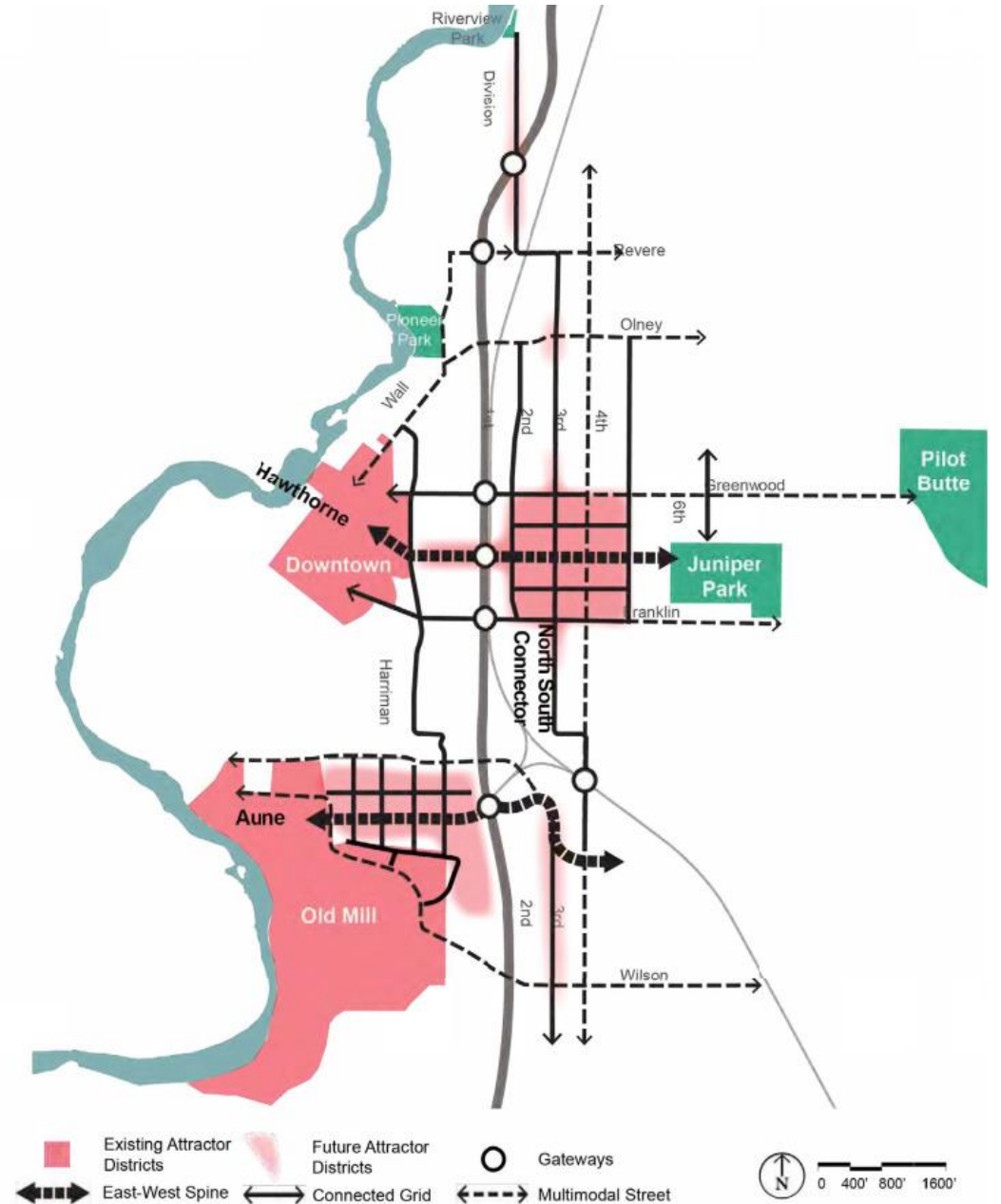
WHO?

- Who are the Priority Beneficiaries?
- Specific end users?:
 - Businesses owned by women, minorities, and/or veterans
 - What % of ownership to qualify for this?
 - Small businesses
 - Local businesses
 - Business organization/merchants association - organizations that support the businesses
 - Regular district events - events and programming that support businesses
- Specific use types?:
 - Businesses that generate employment/offer training
 - High wage businesses?
 - Food/beverage/events focused-businesses
 - Entertainment or recreation-based businesses



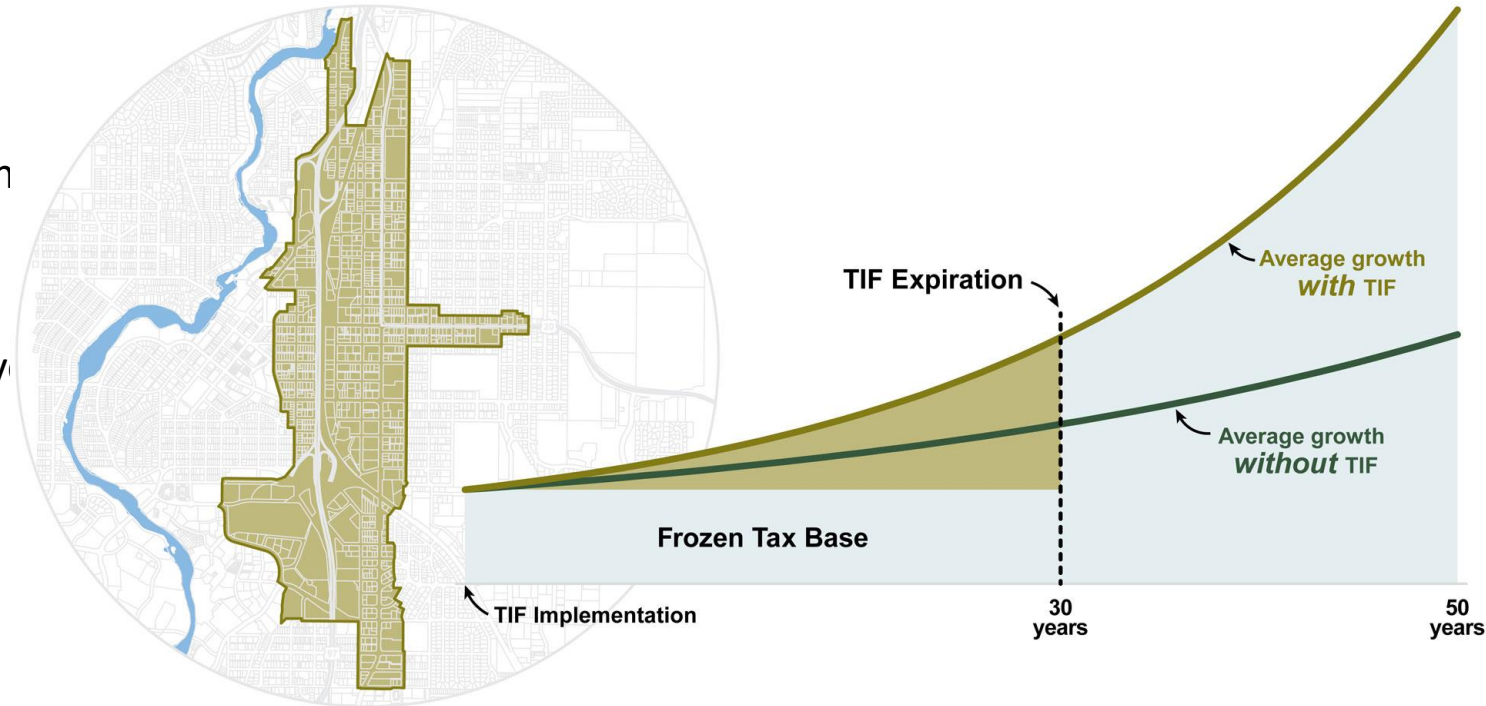
WHERE?

- Where are the highest Priority Locations?
 - Subdistricts in the Core Area?
 - BCD?
 - Certain streets or frontages (align with major capital improvements?)
 - What about 3rd?
 - Certain zoning districts?
 - Key opportunity sites



HOW?

- Structure/amount of funds? Difference in the amount of funds for different types of projects?
\$ amount or time limit on how applicants can use this fund?
 - Grant?
 - Loan?
 - “Tax exemption” (annual reimbursemen
 - Requirement for matching funds?
 - Same amount for hard vs. soft costs?
 - Grants to building owners or tenants? (Support stabilization investments to av accidental gentrification if supporting a specific business (tenant) is the goal.)
- How to make funds most accessible?
 - Easy to access website/application materials
 - Rolling or fixed application period?
 - Limited application materials
 - Staff assistance in accessing resources and completing applications



UPCOMING MEETINGS

- Monday, November 14 10:30am-Noon

Location: Council Chambers