

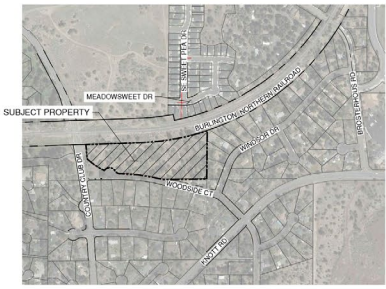
*Give as you go*



**Woodside Court**  
**AHAC**

**Sept 13<sup>th</sup>, 2023**





VICINITY MAP  
APPROX. SCALE: 1" = 500'



APPROXIMATE LOCATION OF EXISTING  
CITY OF BEND SANITARY SEWER MANHOLE  
RIM: 3745.64  
(E OUT = 3741.13 (NW))  
(ELEVATIONS PER CITY GIS AND TO BE  
VERIFIED PRIOR TO FINAL DESIGN)

- LEGEND**
- NOTE: (P) = PROPOSED, (E) = EXISTING, (F) = FUTURE
  - (E) APPROXIMATE TAX LOT LINE PER COUNTY GIS
  - (E) APPROXIMATE LOCATION OF SEWER MAIN
  - (P) CONCEPTUAL LOT LINE
  - SS — SS — (P) SEWER MAIN
  - (P) SANITARY SEWER MANHOLE
  - ▲ (P) SANITARY SEWER FLOW DIRECTION

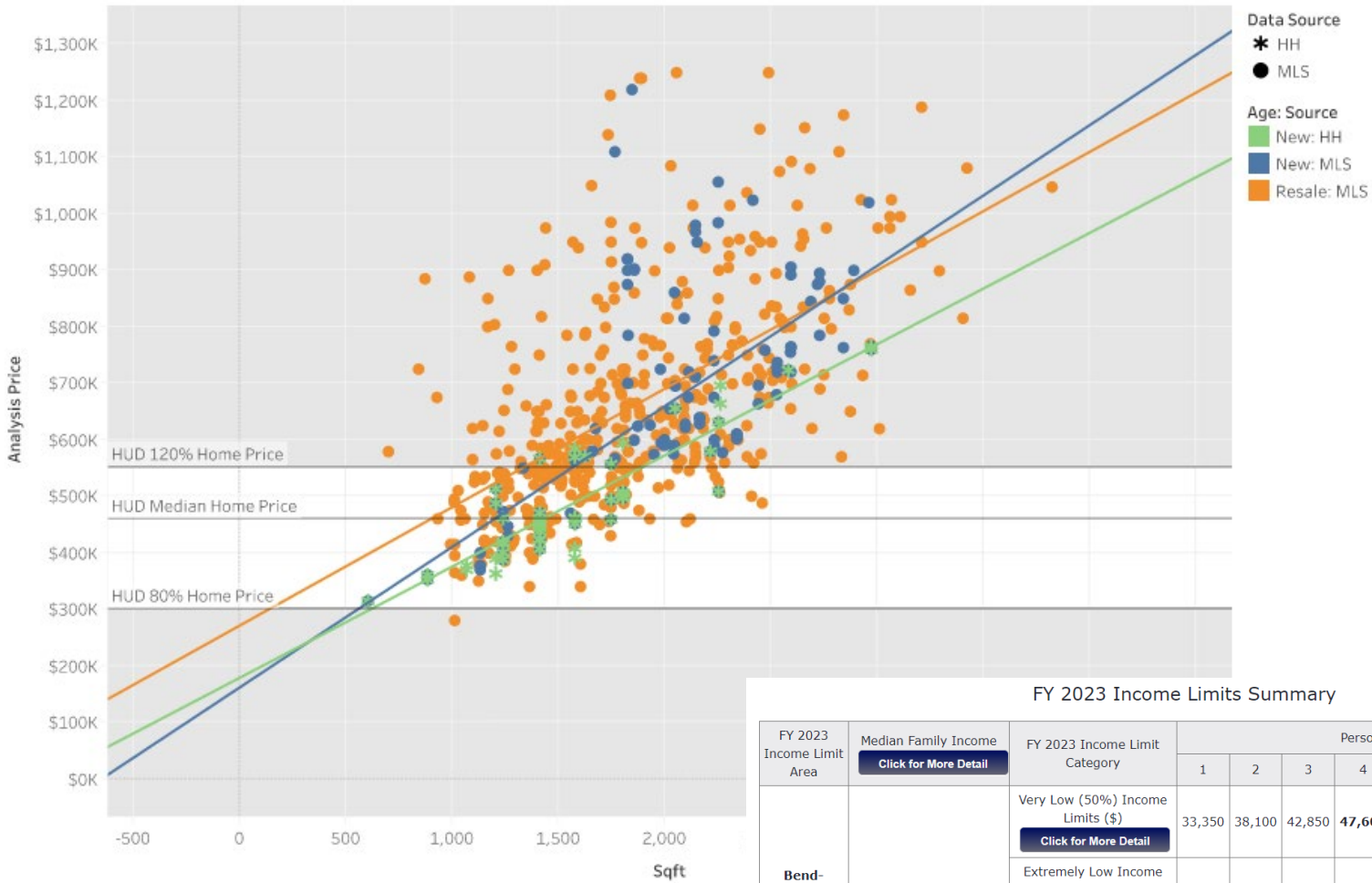
CONCEPTUAL OFF-SITE SEWER PLAN  
SCALE: 1" = 100'

*live as you go*



# Bend & Redmond

New vs Resale Space Map | L90 Closings | Data updated 9/6/2023



Sources: MLS, Hayden Homes | L90 = Last 90-day time frame  
Affordable Home Price Calculated assuming household spends 30% of income on housing at

## FY 2023 Income Limits Summary

| FY 2023 Income Limit Area   | Median Family Income<br><a href="#">Click for More Detail</a> | FY 2023 Income Limit Category  | Persons in Family |        |        |               |        |        |        |         |
|-----------------------------|---|--|-------------------|--------|--------|---------------|--------|--------|--------|---------|
|                             |   |  | 1                 | 2      | 3      | 4             | 5      | 6      | 7      | 8       |
| <b>Bend-Redmond, OR MSA</b> | \$104,400   | Very Low (50%) Income Limits (\$)<br><a href="#">Click for More Detail</a> | 33,350            | 38,100 | 42,850 | <b>47,600</b> | 51,450 | 55,250 | 59,050 | 62,850  |
|                             |   | Extremely Low Income Limits (\$)*<br><a href="#">Click for More Detail</a> | 20,000            | 22,850 | 25,700 | <b>30,000</b> | 35,140 | 40,280 | 45,420 | 50,560  |
|                             |   | Low (80%) Income Limits (\$)<br><a href="#">Click for More Detail</a>      | 53,350            | 60,950 | 68,550 | <b>76,150</b> | 82,250 | 88,350 | 94,450 | 100,550 |

*Give as you go*



*Give as you go*

*Give as you go*

THANK YOU