

ORE 50.2
16

16

15

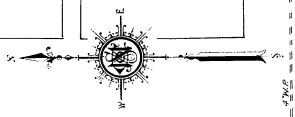
15

16

SEPT. 1926
BEND
ORE.

36

36



HARRIMAN

SISEMORE

CHAMBERLAIN

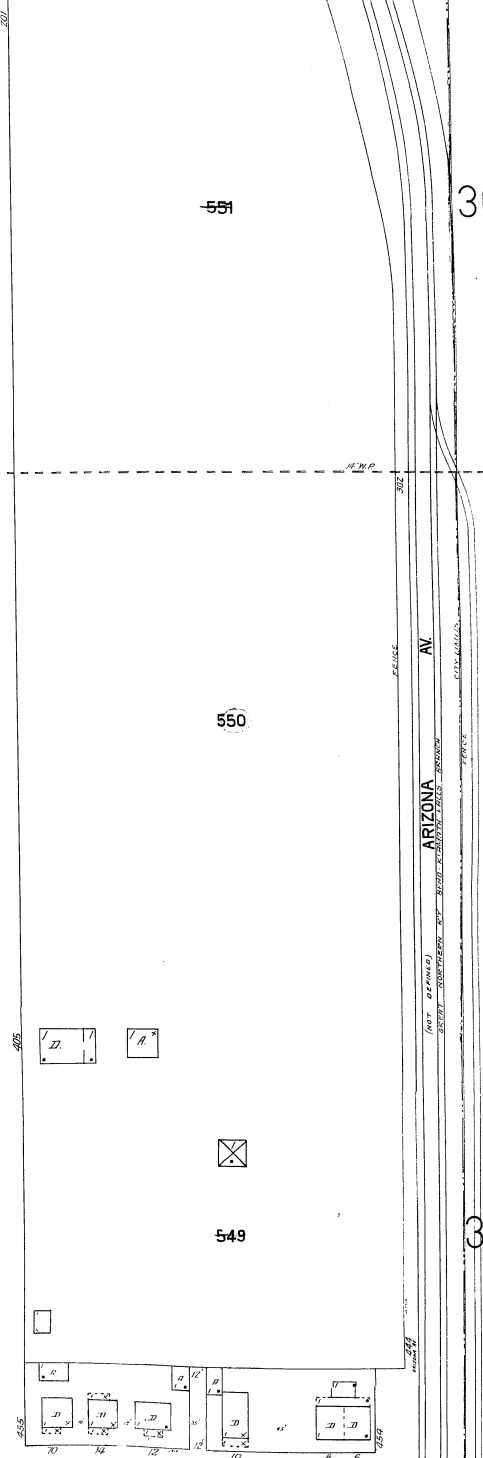
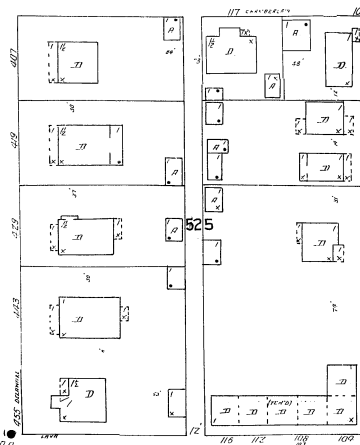
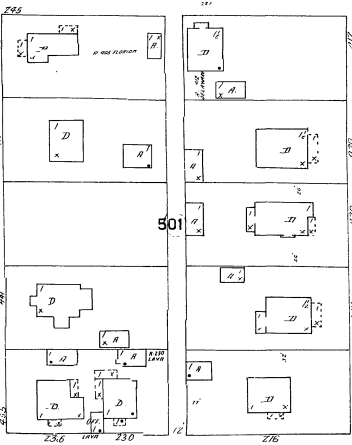
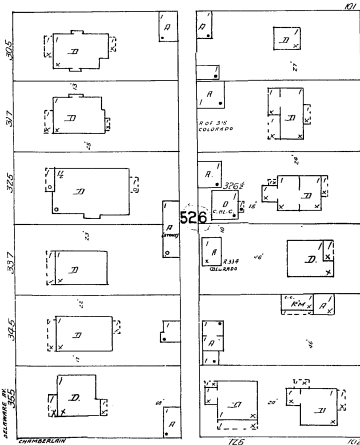
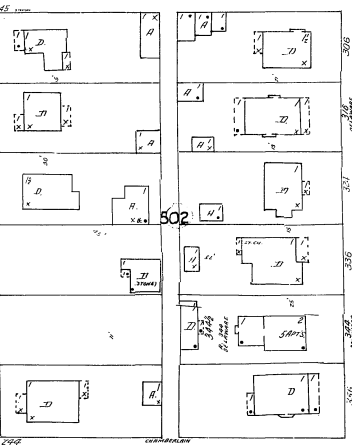
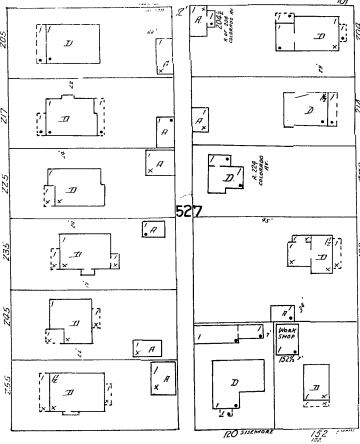
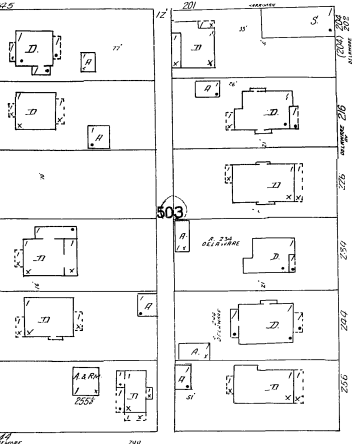
LAVA RD

FLORIDA AV.

DELAWARE AV.

COLORADO AV.

ARIZONA AV.



Copyright 1926 by the Oregon State Board of Health