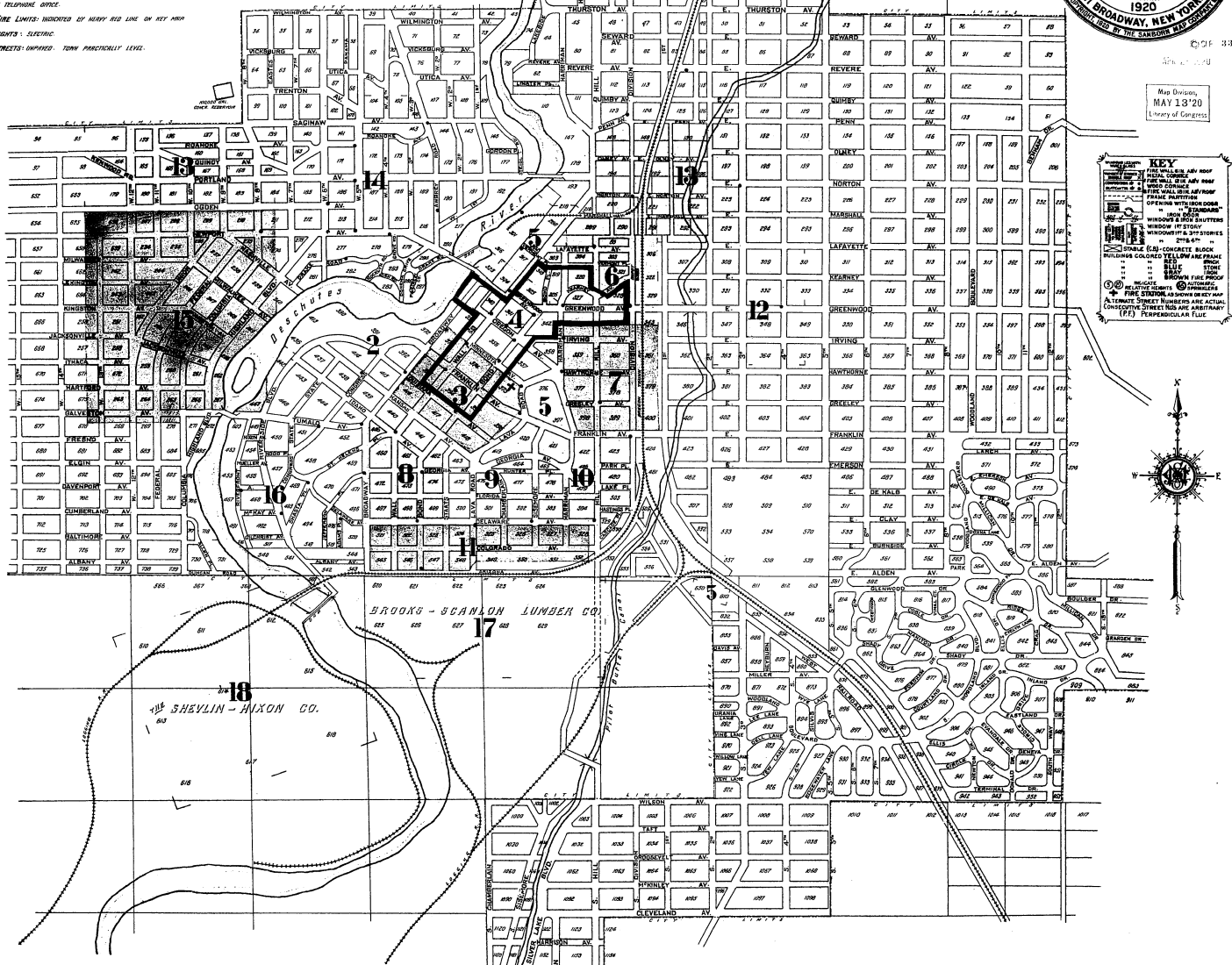




WATER FACILITIES: WATER BY THE BEND WATER LIGHT AND POWER CO. (PRIVATE SYSTEM) WATER TAKEN FROM THE DESCHUTES RIVER BY A POINT 2 1/2 MILES S.W. OF BEND P.O. AN INTAKE DAM HAS BUILT THE PRIVATE SYSTEM, DELIVERS WATER THROUGH A 14" WOOD STAVE PIPE TO TRANSMISSION LINE 17" DIAMETER WITH AN 8" DIAMETER BRANCH. THIS SYSTEM CONNECTS WITH THE BROADWAY-SCANLON LUMBER CO. PIPE, WHICH LEADS TO THE BEND WATER TOWER. THE TOWER IS 100 FEET HIGH AND IS EQUIPPED WITH A COMPARTMENT FOR THE WATER TOWER. THE WATER TOWER IS 100 FEET HIGH AND IS EQUIPPED WITH A COMPARTMENT FOR THE WATER TOWER. THE WATER TOWER IS 100 FEET HIGH AND IS EQUIPPED WITH A COMPARTMENT FOR THE WATER TOWER.

FIRE DEPT.: VOLUNTEER. CHIEF AND 40 MEMBERS. 3 MEN LIVE IN FIRE HOUSE. 7 MEN SLEEP IN FIRE HOUSE. 3 HORSE HOSES CARRIED TO LOCATIONS IN BEND AND 1/4 MILE S.W. OF BEND. 100 FEET HIGH AND IS EQUIPPED WITH A COMPARTMENT FOR THE WATER TOWER. THE WATER TOWER IS 100 FEET HIGH AND IS EQUIPPED WITH A COMPARTMENT FOR THE WATER TOWER.

FIRE ALARMS: 100 FEET HIGH AND IS EQUIPPED WITH A COMPARTMENT FOR THE WATER TOWER. THE WATER TOWER IS 100 FEET HIGH AND IS EQUIPPED WITH A COMPARTMENT FOR THE WATER TOWER.



KEY

- 1. FIRE ALARMS
- 2. FIRE STATION
- 3. FIRE HOUSE
- 4. WATER TOWER
- 5. WATER TOWER
- 6. WATER TOWER
- 7. WATER TOWER
- 8. WATER TOWER
- 9. WATER TOWER
- 10. WATER TOWER
- 11. WATER TOWER
- 12. WATER TOWER
- 13. WATER TOWER
- 14. WATER TOWER
- 15. WATER TOWER
- 16. WATER TOWER
- 17. WATER TOWER
- 18. WATER TOWER

STREETS		INDEX		SPECIALS	
A	Adams Place	H	Hartford Av.	W	Wall
B	Bond	I	Hastings Place	X	Xenia
C	Broadway	J	Hawthorne Av.	Y	Yonkers
D	Delaware Av.	K	Highland Av.	Z	Zanesville
E	Eastes	L	Hill		
F	Federal	M	Hill		
G	Florida Av.	N	Hill		
H	Fourth	O	Hill		
I	Franklin Av.	P	Hill		
J	Galveston Av.	Q	Hill		
K	Georgia Av.	R	Hill		
L	Gilchrist Av.	S	Hill		
M	Glen Road	T	Hill		
N	Greely Av.	U	Hill		
O	Greenwood Av.	V	Hill		
P	Harrison	W	Hill		
Q	Hickory	X	Hill		
R	Hickory	Y	Hill		
S	Hickory	Z	Hill		
T	Hickory				
U	Hickory				
V	Hickory				
W	Hickory				
X	Hickory				
Y	Hickory				
Z	Hickory				

Map 12, 1920
Library of Congress