

37

SEPT. 1928  
**BEND**  
ORE.

ORE 50.2

37

SCALE 100 FT. TO AN INCH

TERRITORY SHOWN ON THIS SHEET  
IS OUTSIDE CORPORATE LIMITS.

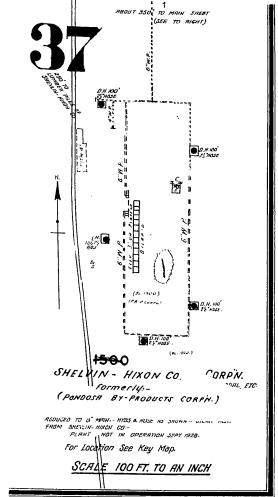
### THE SHEVLIN - HIXON CO.

APPROXIMATE AMOUNT OF LUMBER 750,000,000 FEET  
COMPOSITE OF LUMBER 250,000,000 FEET  
A NIGHT AND DAY WORKING PLANT, INCLUDING ELECTRIC, AIR SYSTEMS, HEAVY HEAVY  
ELECTRIC POWER AND LUMBER DRYING PLANT, IN LUMBER MILL, 100 FT. HIGH,  
DRIVING BELT TO WHEELS - MOTOR FROM RESIDUAL POWER BY A PROVISIONAL  
MOTOR UNDERSTANDING STEAM ENGINE, 100 FT. X 20 FT. CAPACITY, 100 HP. AND  
2" DIA. IN THE REAR END - 3" DIA. DIA. CAPACITY PLANT, TO A 100,000  
GAL. WATER TANK, ELEV. 50' AND IN REAR END, WATER TANK, ELEV. 70'.  
AUTOMATIC SPRINKLER SYSTEM, 100,000 GAL. WATER TANK, 100 FT. HIGH,  
UNDERSTANDING STEAM ENGINE, 100 FT. X 20 FT. CAPACITY, 100 HP. AND  
2" DIA. IN THE REAR END - 3" DIA. DIA. CAPACITY PLANT, TO A 100,000  
GAL. WATER TANK, ELEV. 50' AND IN REAR END, WATER TANK, ELEV. 70'.  
PROVISIONAL SOURCE OF SUPPLY - 100,000 GAL. WATER TANK, 100 FT. HIGH,  
UNDERSTANDING STEAM ENGINE, 100 FT. X 20 FT. CAPACITY, 100 HP. AND  
2" DIA. IN THE REAR END - 3" DIA. DIA. CAPACITY PLANT, TO A 100,000  
GAL. WATER TANK, ELEV. 50' AND IN REAR END, WATER TANK, ELEV. 70'.  
MOTOR DIA. CAPACITY PLANT.

For Location See Key Map



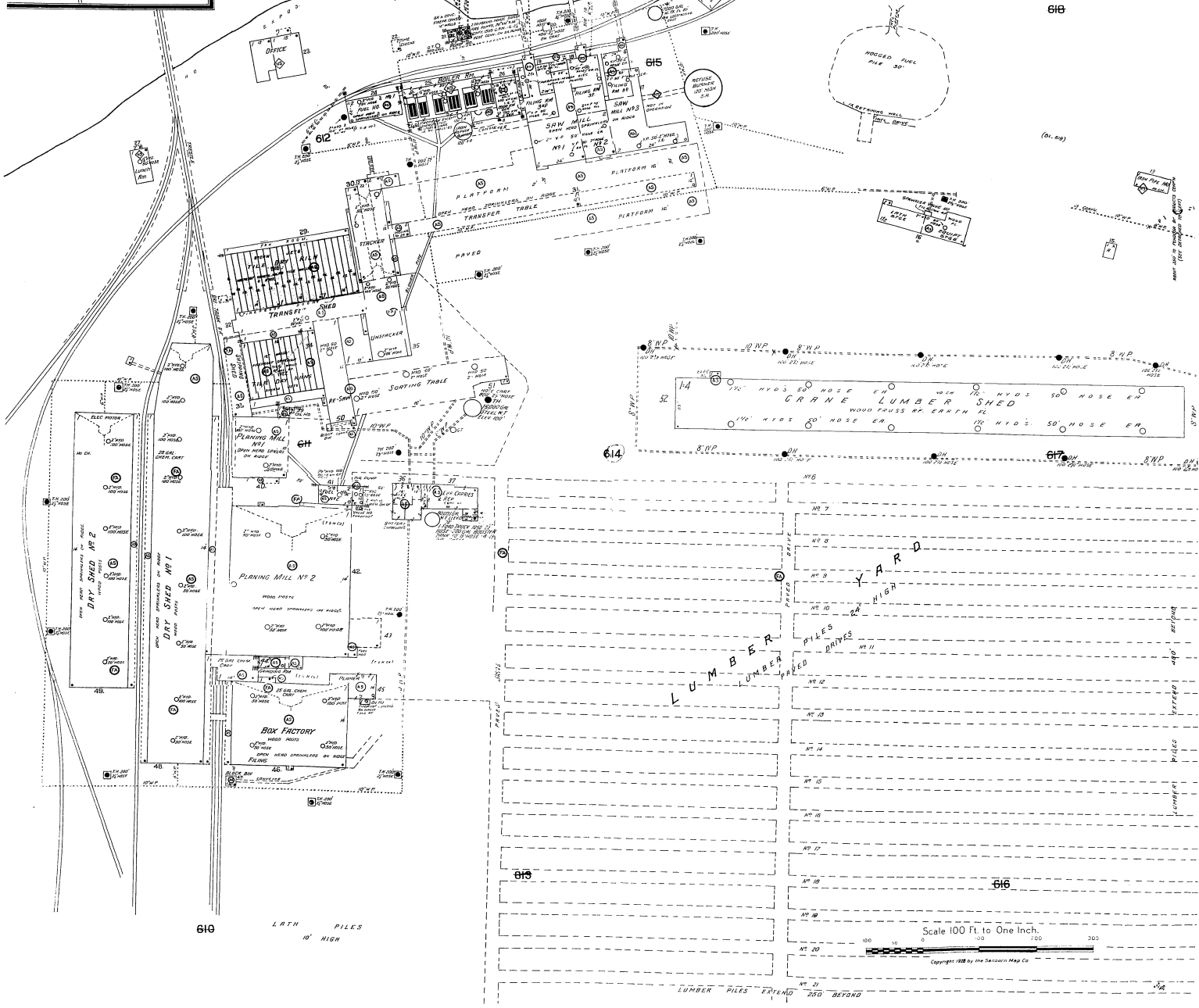
Daschutes River



1500  
**SHELVIN - HIXON CO. CORP.**  
Formerly  
(PIONEER BY-PRODUCT CORP.)

REGULATED TO 10' MIN. WITH A FEED IN LUMBER  
FROM MILLING PLANT TO  
PLANT - NOT IN OPERATION LATE 1928.  
For Location See Key Map.

SCALE 100 FT. TO AN INCH



Scale 100 Ft. to One Inch.

Copyright 1928 by the Searborn Map Co.