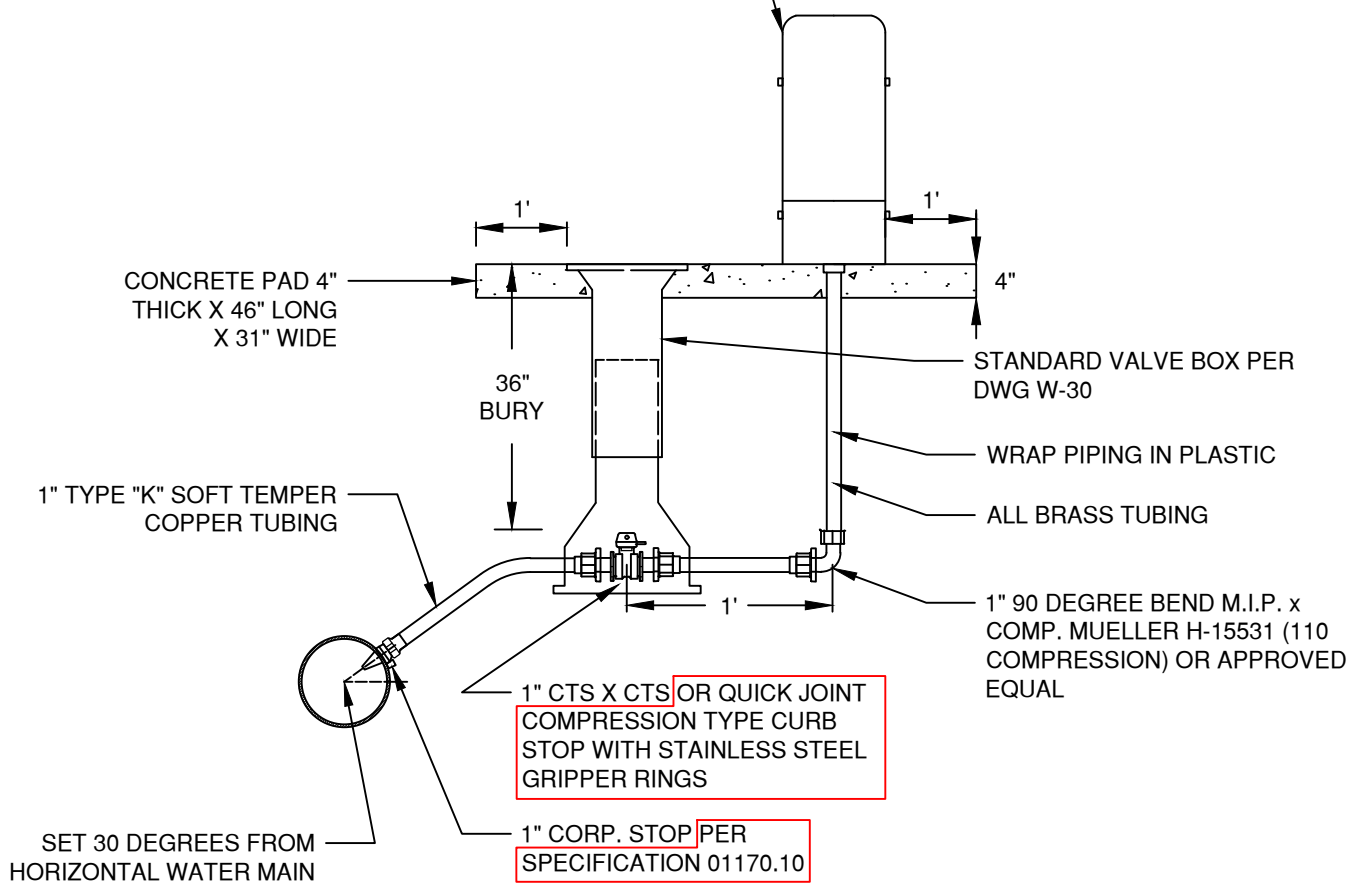


ECLIPSE NO. 88 SAMPLING STATION WITH THREADED
 OUTLET NOZZLE AND BRASS INTERIOR, STAND PIPE
 GALVANIZED EXTERIOR OR APPROVED EQUAL



NOTES:

1. ALL PIPE AND STRUCTURES SHALL BE BACKFILLED WITH SCREENED MAX $\frac{3}{4}$ " MINUS CRUSHED ROCK. ALL COMPACTION TO COMPLY WITH SPECIFICATION SECTION 00330.43 AND 00405.46(C).
2. SET STATION AT LOT LINE UNLESS OTHERWISE SPECIFIED.
3. WHEN CROSSING, CATHODICALLY PROTECTED SYSTEM, INSTALL COPPER IN PVC SLEEVE FOR 5' EACH SIDE OF THE CROSSING.
4. WHERE NO SIDEWALK EXISTS, PLACE CONC. PAD AS SHOWN. WHERE SIDEWALKS EXIST, PLACE MIN. 12" AROUND BACK OF SAMPLE STA. AND INCORPORATE INTO NEW SIDEWALK POUR.

| | |
|-------|-------|
| DRAWN | AJD |
| DIV | WATER |
| REV | DATE |



CITY OF BEND

CITY OF BEND

STANDARD DRAWING

710 NW WALL ST., BEND, OREGON 97701

STANDARD WATER SAMPLING STATION

SCALE NTS

DATE 11/01/2024

APPR

STD DWG W-25