



CITY OF BEND

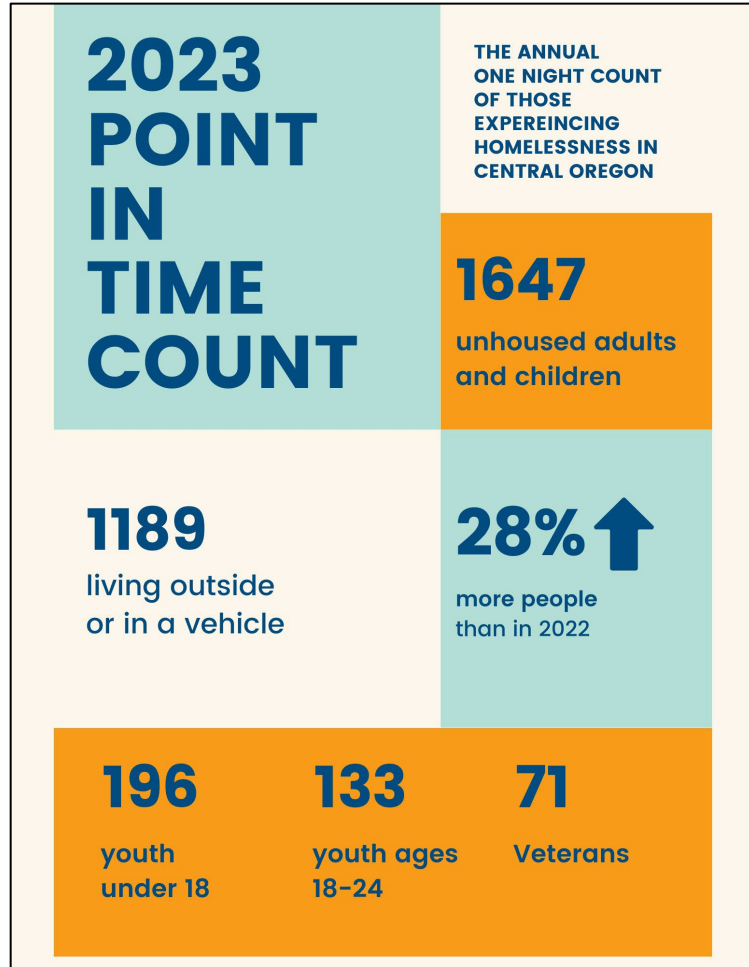
Safe Parking Update & Shelter Bed Coun

Amy Fraley, Senior Program Manager – Houselessness Solutions
Brook O'Keefe, Shelter Coordinator

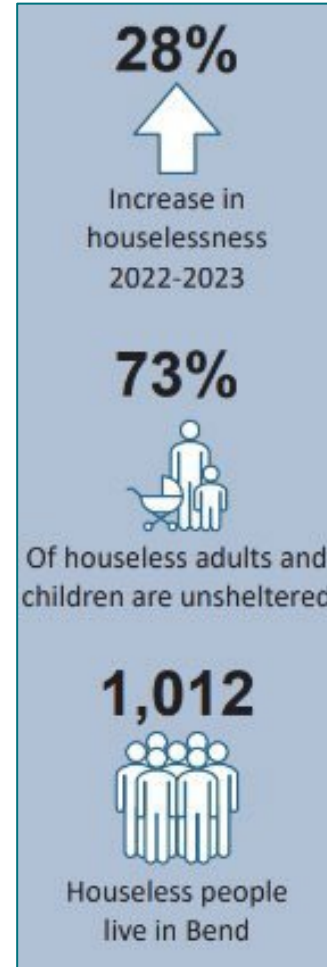
February 14, 2024

2023 Point in Time Count

Central Oregon



Bend



Department of Housing and Urban Development (HUD):

48 of every 10,000 people in Oregon were experiencing homelessness (3rd highest rate in nation)

58.7% of people in families with children experiencing homelessness in Oregon were unsheltered (highest rate in the nation).

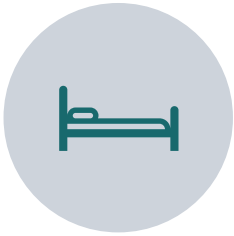
69.9% of unaccompanied youth experiencing homelessness in Oregon were unsheltered (highest rate in the nation)



City-led and Regional Solutions:

City Council Directed Biennium Objectives

- Maintain 505 beds City-wide (252 direct support)
- Support additional Safe Parking sites or Managed Camps



STEPPING STONE

56 BEDS



**NAVIGATION
CENTER**

100+ BEDS



**CENTRAL OREGON
VILLAGES 20 UNITS**



SAFE PARKING SITES

16 BEDS



FRANKLIN SHELTER

60 BEDS

Regional Solutions:

- Coordinated Houseless Response Office
- Homeless Leadership Coalition
- Legislative Efforts
- Partnerships
- Ongoing & Expanded Shelter Operations



CITY OF BEND

Available Resources – Safe Parking



Total Sites: 4

Total Spaces: 12

Location: communities of faith

Operators:

- REACH
- Central Oregon Villages

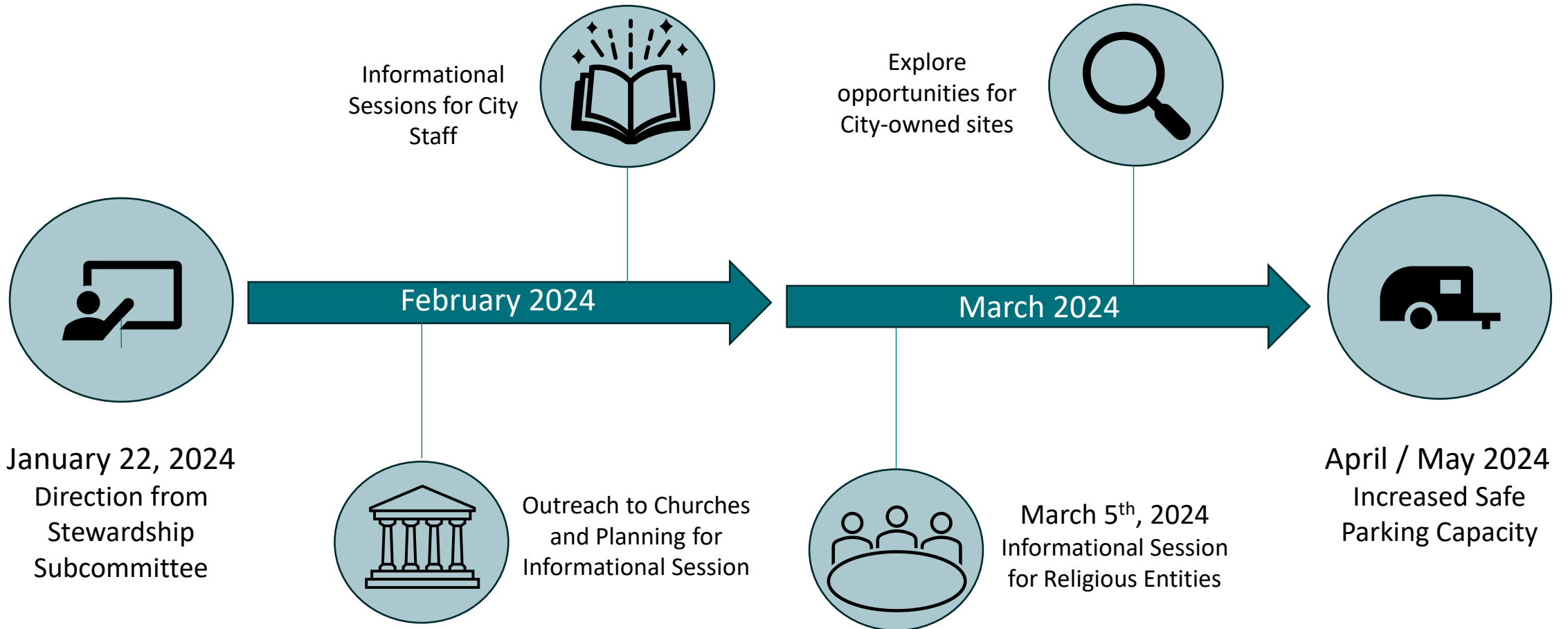
July-November 2023:

- 40 unique individuals served
- 11 transitions

*City does not provide direct financial assistance to any sites



Direction & Next Steps



AHAC Feedback

- Asking for support in beds count methodology
- Why it is important
- The Housing Inventory Count (HIC)
 - Why it is different than the HIC?
- Discussion:
 - Safe Parking
 - Central Oregon Villages



Shelter & Safe Parking Beds in Bend

Organization Name	Shelter Name / Location	Population Served	Shelter Type	Total Beds	In Development
Bethlehem Inn	3705 N Hwy 97, Bend, OR 97701	Mix	HIGH	110	
Bethlehem Inn		Family	HIGH	34	
Stepping Stone	2346 NE Division St	Mix	LOW - Referral	56	
Franklin Avenue Shelter	154 NE Franklin Ave, Bend, OR 97701	Mix	LOW - Referral	60	
St. Vincents	Cleveland	Men	HIGH	10	
Central Oregon Villages	27th and Bear Creek	Mix	HIGH	20	
Bend Heroes Foundation/COVO	Poe Sholes	Veterans	HIGH	15	7
Safe Parking - Central Oregon Villages	1 site	Mix	HIGH	2	
Safe Parking - REACH	1 site	Mix	HIGH	7	
Safe Parking - REACH	1 site	Mix	HIGH	4	
Safe Parking - REACH	1 site	Mix	HIGH	3	
Cascade Youth and Family Center	Century Drive, The LOFT	Youth (ages 14-24)	HIGH	18	
Cascade Youth and Family Center	Grandmas House	Youth (families parents 14-24)	HIGH	14	
Cascade Youth and Family Center	Host Homes	Youth (ages 14-24)	HIGH	10	
Saving Grace		Fleeing IPV/SA	HIGH	20	
The Lighthouse	275 NE 2nd, Bend, OR 97701	Mix	WALK UP LOW BARRIER	100	
Shepherd's House	Division Street Men's Programs	Men	HIGH	30	
Shepherd's House	Division Street Women's Programs	Women	HIGH	10	
Deschutes County Parole and Probation	Wilson Ave	Men	HIGH*	8	
			Total	531	7
Tiny Homes / Cabins / Pallet					
Safe Parking - Vehicles					
Safe Parking - Pallets					
Hotels/Motels					



Accommodation Information for People with Disabilities



To obtain this information in an alternate format such as Braille, large print, electronic formats, etc. please contact Brook O'Keefe at bokeefe@bendoregon.gov or 541-604-5233; Relay Users Dial 7-1-1.