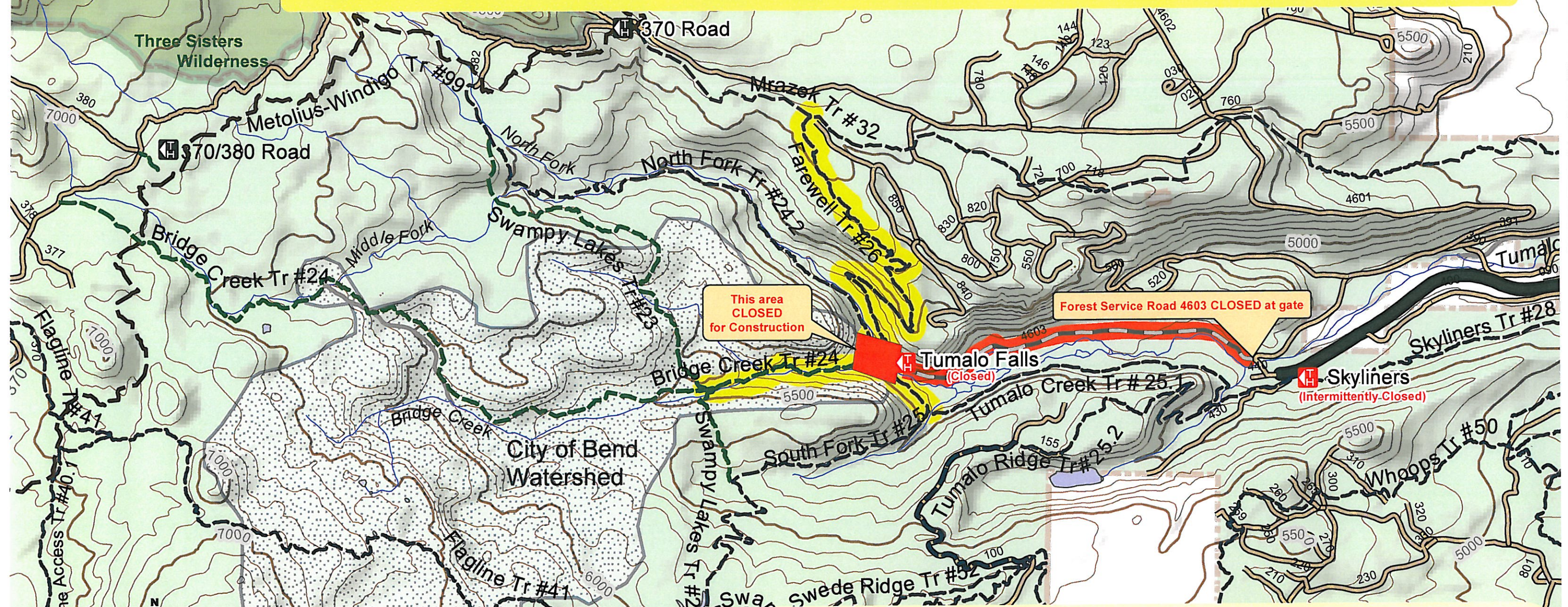


# TEMPORARY ROAD AND TRAIL CLOSURES



## CLOSURE

The construction area around Tumalo Falls will be closed from 9/26/2012 until 5/24/2013. This closure is for maintenance work in the City of Bend Watershed near Tumalo Falls and on Forest Service Road 4603.

Attachment A 36CFR.261.54(a) and (e)

Please refer to this map for trail closures.

The construction area highlighted in Red on this Map will be closed to public entry. Trails highlighted in Yellow will remain open during construction but there will be no access through to Tumalo Falls, you will be required to turn around when you reach the Tumalo falls Closure area.

When traveling on Farewell Trail, Bridge Creek Trail (between North Fork and Swamy lakes trails), South Fork Trail (between Tumalo Falls trailhead and Tumalo Creek trail), North Fork Trail (from Tumalo Falls trailhead to the top of Tumalo falls viewpoint) Tumalo Falls, and the Tumalo Falls trailhead you will be required to stop when you reach the closure area.

Skyliners Trailhead will be intermittently closed and parking will be available on Skyliners Road between Skyliners Trailhead and FS Road 430 for access to Tumalo Creek Trail and Skyliners Trail

If you have questions about these closures, please call the Bend-Fort Rock Ranger District office at 541-383-4000



USDA Forest Service

