







**Attachment C**  
Multimodal Data Collection Locations





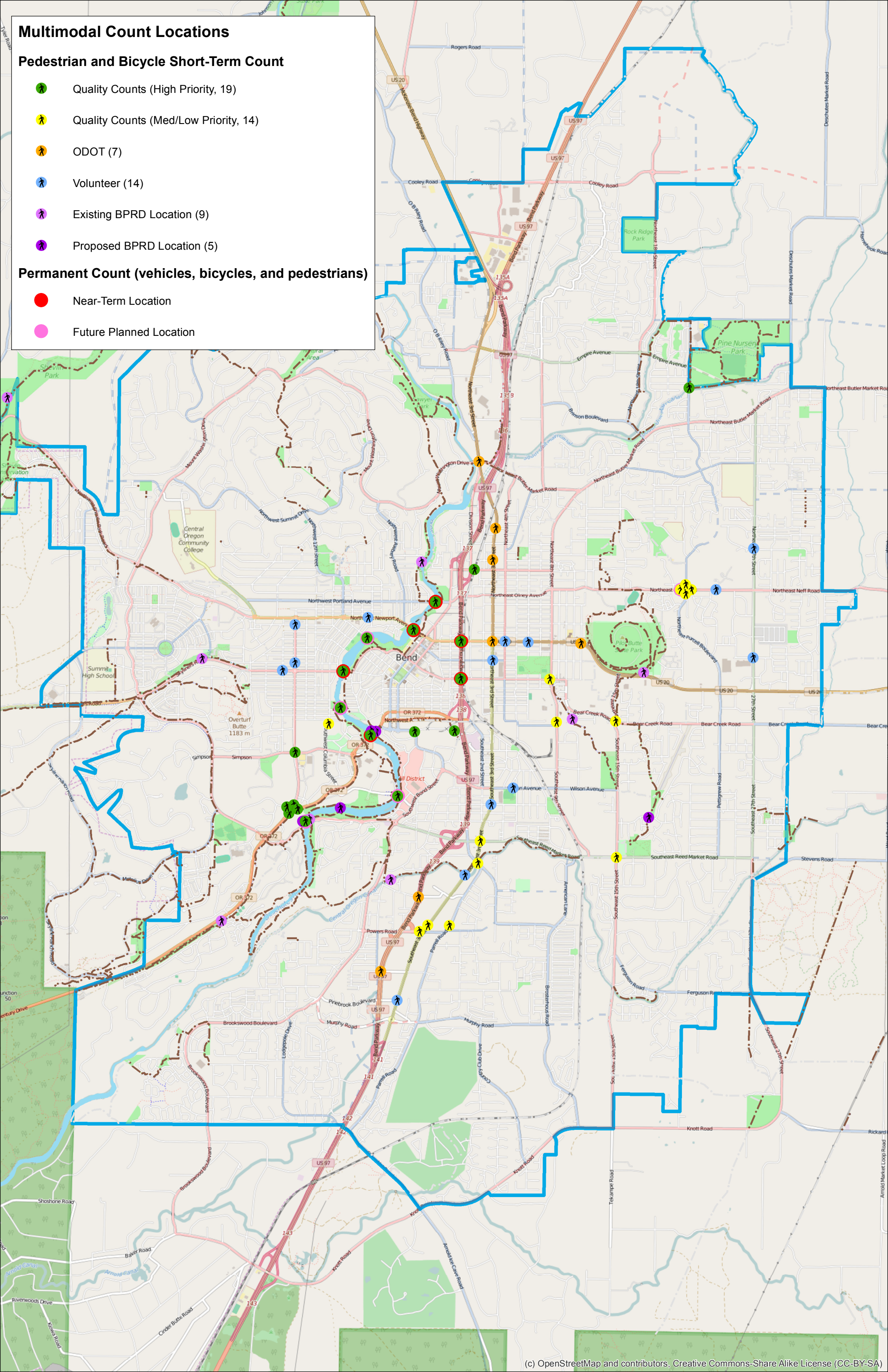
# Multimodal Count Locations

## Pedestrian and Bicycle Short-Term Count

-  Quality Counts (High Priority, 19)
-  Quality Counts (Med/Low Priority, 14)
-  ODOT (7)
-  Volunteer (14)
-  Existing BPRD Location (9)
-  Proposed BPRD Location (5)

## Permanent Count (vehicles, bicycles, and pedestrians)

-  Near-Term Location
-  Future Planned Location





**Multimodal Count Locations**

ID	RoadName	Location	Collection Type	Permanent Counter?	Count Type	CountDurat	Bridge/ Undercrossing
1	Revere Avenue	at-grade rail crossing	Quality Counts (high priority)		E/W bike/ped	2 hours	
2	Deschutes River Trail	Columbia Park Bridge	Quality Counts (high priority)	Future permanent location	Screenline bike/ped	2 hours	Bridge
3	Canal Trail	crossing at Purcell Boulevard	Quality Counts (high priority)		Screenline bike/ped	4 hours (7:30-9:30 am, 2:30-4:30 pm)	
4	Colorado Avenue	Deschutes River bridge	Quality Counts (high priority)	Near-term permanent location	Screenline bike/ped	2 hours	Bridge
5	Columbia Street	Deschutes River bridge	Quality Counts (high priority)	Future permanent location	Screenline bike/ped	2 hours	Bridge
6	Galveston Avenue	Deschutes River bridge	Quality Counts (high priority)	Near-term permanent location	Screenline bike/ped	2 hours	Bridge
7	Newport Avenue	Deschutes River bridge	Quality Counts (high priority)	Near-term permanent location	Screenline bike/ped	2 hours	Bridge
8	Portland Avenue	Deschutes River bridge	Quality Counts (high priority)	Near-term permanent location	Screenline bike/ped	2 hours	Bridge
9	Drake Park Footbridge	Deschutes River bridge	Quality Counts (high priority)	Future permanent location	Screenline bike/ped	2 hours	Bridge
10	Reed Market Road	Deschutes River bridge	Quality Counts (high priority)	Future permanent location	Screenline bike/ped	2 hours	Bridge
11	Franklin Avenue	Parkway undercrossing	Quality Counts (high priority)	Near-term permanent location	Screenline bike/ped	2 hours	undercrossing
12	Greenwood Avenue	Parkway undercrossing	Quality Counts (high priority)	Near-term permanent location	Screenline bike/ped	2 hours	undercrossing
13	SW Century Drive	SW Colorado Avenue	Quality Counts (high priority)		Intersection TMC	2 hours	
14	Industrial Way/Bond Street	intersection	Quality Counts (high priority)		Intersection TMC for bikes	2 hours	
15	Trail near Industrial and Crux	east side of Industrial Way	Quality Counts (high priority)		Screenline bike/ped	2 hours	
16	14th Street/Simpson	intersection	Quality Counts (high priority)		Intersection TMC for bikes	2 hours	
17	SE 15th Street	at Reed Market Road	Quality Counts (med/low priority)		Bike TMC and ped crosswalks	2 hours	
18	NE 15th Street	at Bear Creek Rd	Quality Counts (med/low priority)		Bike TMC and ped crosswalks	2 hours	
19	NE 8th St	at Franklin Ave	Quality Counts (med/low priority)		Bike TMC and ped crosswalks	2 hours	
20	Powers Road	at Parrell Rd	Quality Counts (med/low priority)		Screenline bike/ped	2 hours	
21	SE 3rd Street	at Reed Market Rd	Quality Counts (med/low priority)		Bike TMC and ped crosswalks	2 hours	
22	Neff Road	Purcell Boulevard	Quality Counts (med/low priority)	Future permanent location (west leg)	Intersection TMC	4 hours (2-6 pm)	
23	Brosterhous Road	east of SE 3rd Street	Quality Counts (med/low priority)		Screenline bike/ped	2 hours	
24	3rd Street	north of Powers Road	Quality Counts (med/low priority)		Screenline bike/ped	2 hours	
25	9th Street	north of SE Glenwood Dr	Quality Counts (med/low priority)		Screenline bike/ped	2 hours	
26	Powers Road	west of 3rd Street	Quality Counts (med/low priority)		Screenline bike/ped	2 hours	Parkway crossing
27	Columbia Street	south of Commerce Street	Quality Counts (med/low priority)		Screenline bike/ped	2 hours	
28	NE 3rd Street	at Greenwood	ODOT				
29	NE 12th Street	at Greenwood ped crossing	ODOT		Screenline bike/ped		
30	3rd Street	At Mt. Washington Drive	ODOT		Intersection TMC for bikes		
31	3rd Street	At NE Underwood Ave	ODOT				
32	Reed Lane	RRFB at Bend Parkway	ODOT		Screenline bike/ped		
33	Badger Rd	RRFB at Bend Parkway	ODOT		E/W bike/ped		
34	3rd Street	At NE Seward Ave	ODOT		Intersection TMC	2 hours	
35	Newport Avenue	At NW Harmon Blvd	Volunteer		N/S & E/W bike/ped		
36	Trail	Bend Parkway Undercrossing	Volunteer		Screenline bike/ped	2 hours	
37	15th Street	At Galveston Avenue	Volunteer		N/S & E/W bike/ped	2 hours	
38	NE 45th Street	at Greenwood Ave	Volunteer		N/S & E/W bike/ped	2 hours	
39	NW 14th Street	At Milwaukee Avenue	Volunteer		N/S & E/W bike/ped	2 hours	
40	NE 27th Street	At NE Conners Drive/Avenue	Volunteer		N/S & E/W bike/ped	2 hours	
41	NE 27th Street	at NE Forum Dr	Volunteer		Screenline bike/ped	2 hours	
42	SE 3rd Street	At Pineboork Blvd	Volunteer		N/S bike/ped	2 hours	
43	SE 3rd Street	at SE Roosevelt Ave	Volunteer		E/W bike/ped	2 hours	
44	NE 6th Street	crossing at Greenwood Avenue	Volunteer		N/S bike/ped	2 hours	
45	Neff Road	E of Williamson Blvd at hospital	Volunteer		N/S & E/W bike/ped	2 hours	
46	Hartford Avenue	east of 14th Street	Volunteer		Screenline bike/ped	2 hours	
47	NE 3rd Street	Hawthorne Transit Station	Volunteer		E/W bike/ped	2 hours	

Multimodal Count Locations

ID	RoadName	Location	Collection Type	Permanent Counter?	Count Type	CountDurat	Bridge/ Undercrossing
48	Wilson Avenue	west of 5th Street	Volunteer		Screenline bike/ped	2 hours	
49	Colorado Ave bike/ped bridge	Deschutes River Crossing	BPRD (proposed)		Screenline bike/ped		
50	Riverbend Park bike/ped bridge	Deschutes River Crossing	BPRD (proposed)		Screenline bike/ped		
51	Colorado Avenue	Deschutes River trail undercrossing	BPRD (proposed)		Screenline bike/ped		undercrossing
52	Trail at Reed Market/Deschutes River Trail (west)	West side of Deschutes River	BPRD (proposed)		Screenline bike/ped		
53	Larkspur Trail, South	south area of trail	BPRD (proposed)		Screenline bike/ped		
54	Central Oregon Canal Trail	west of parkway	BPRD (existing)		Screenline bike/ped		undercrossing
55	Larkspur Trail/Hwy 20 Undercrossing	trail undercrossing	BPRD (existing)		Screenline bike/ped		
56	Deschutes River Trail, North	Deschutes River Trail	BPRD (existing)		Screenline bike/ped		
57	Tumalo Creek Trail, North	N of NW Shevlin Park Rd	BPRD (existing)		Screenline bike/ped		
58	Haul Road Trail	W of Mammoth Drive	BPRD (existing)		Screenline bike/ped		
59	West Bend Trail	North of Skyliners Rd	BPRD (existing)		Screenline bike/ped		
60	Tumalo Creek Trail, South	S of NW Shevlin Park Rd	BPRD (existing)		Screenline bike/ped		
61	Coyner Trail	south of NE Burnside Avenue	BPRD (existing)		Screenline bike/ped		
62	Trail at Reed Market/Deschutes River Trail (east)	East side Deschutes River	BPRD (existing)		Screenline bike/ped		