

Figure 2-2 Population Density, 2010

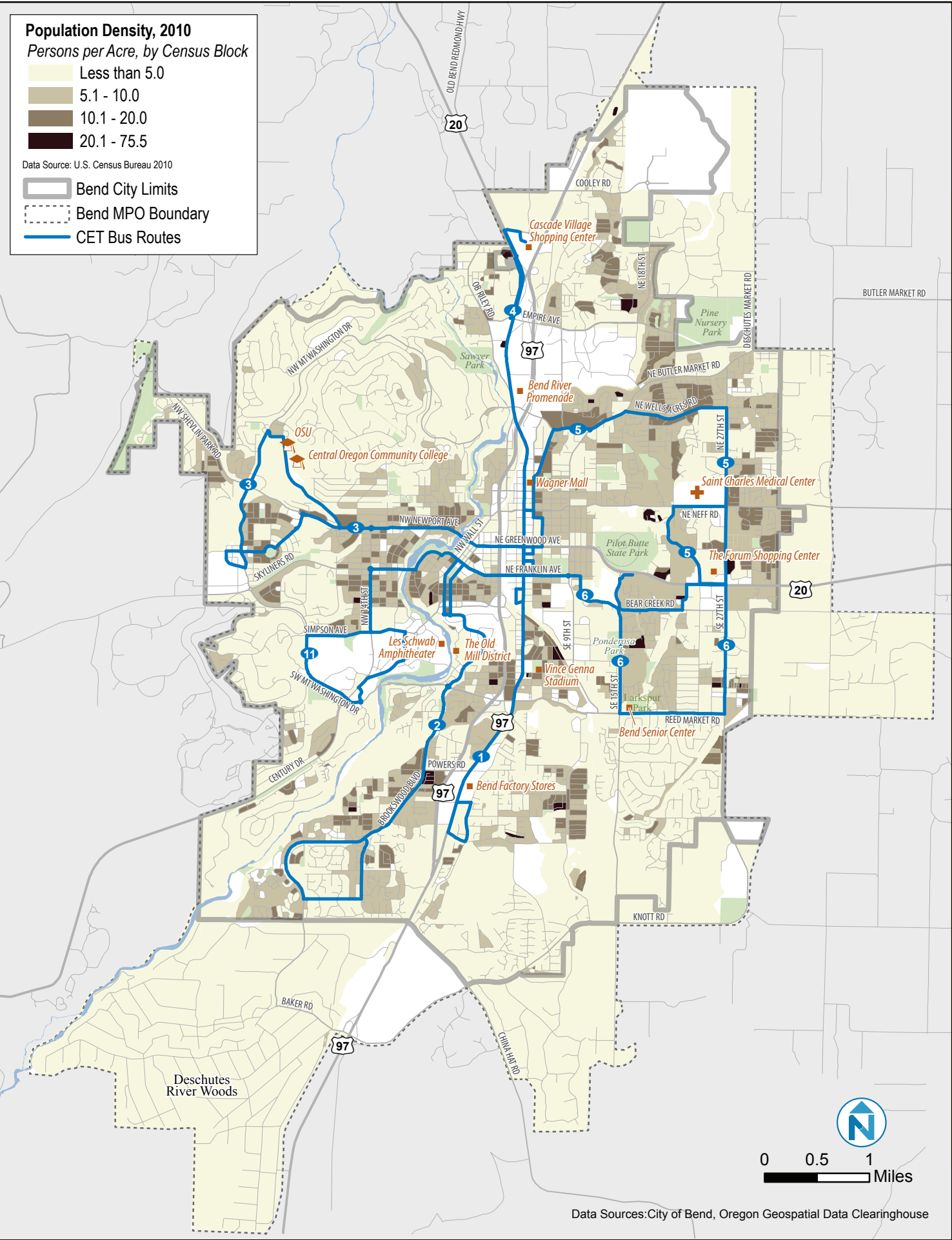
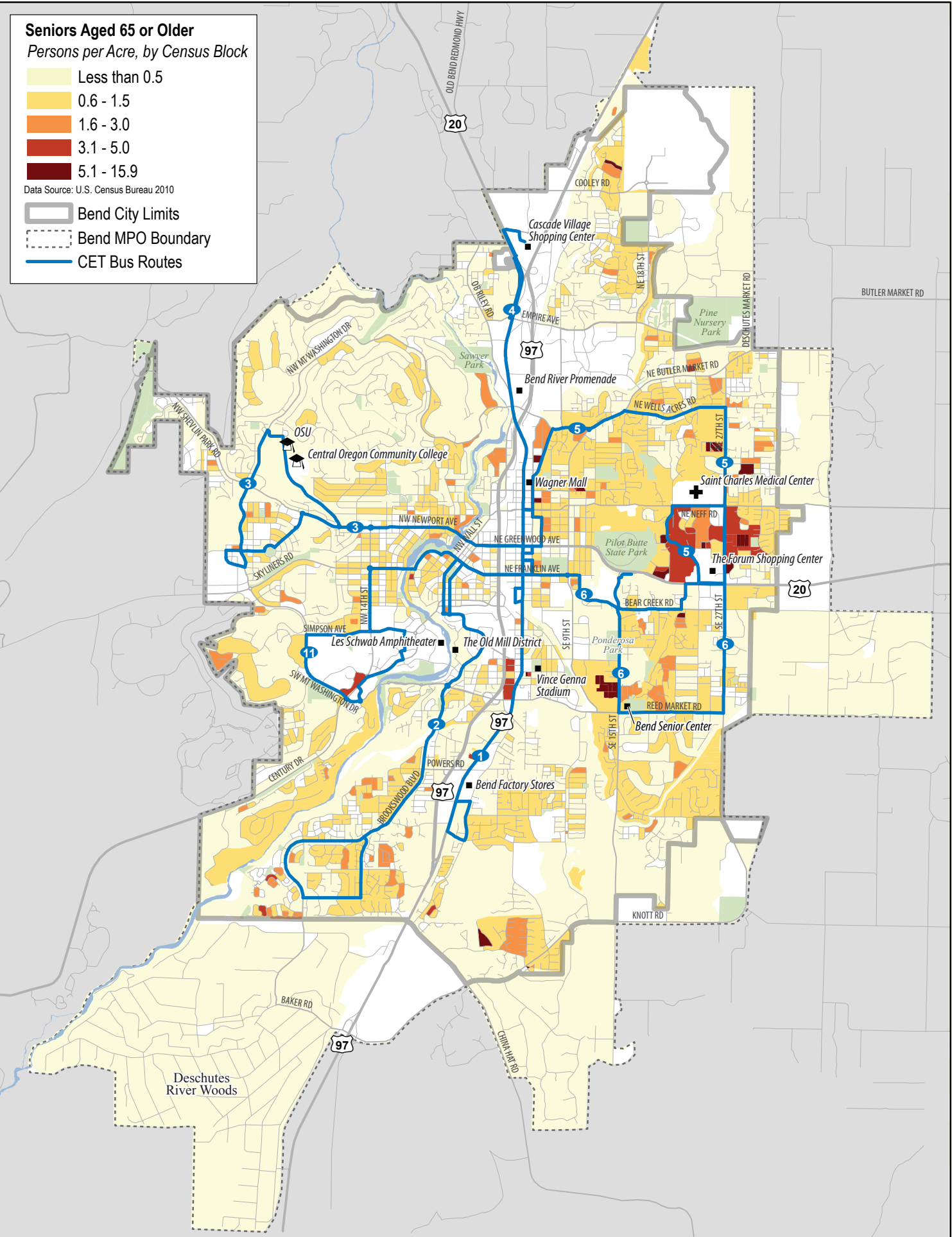


Figure 2-3 Senior (Aged 65 or Older) Population Density, 2010



**Youth Aged 10 to 17**  
Persons per Acre, by Census Block

- Less than 0.50
- 0.51 - 1.50
- 1.51 - 3.00
- 3.01 - 5.00
- 5.01 - 30.84

Data Source: U.S. Census Bureau 2010

- Bend City Limits
- Bend MPO Boundary
- CET Bus Routes

The map displays the density of youth aged 10 to 17 across various census blocks in Bend, Oregon. The density is color-coded from light yellow (less than 0.50 persons per acre) to dark purple (5.01 to 30.84 persons per acre). The map also shows the Bend City Limits, the Bend Metropolitan Planning Organization (MPO) Boundary, and the Central Eugene Transit (CET) Bus Routes. Key locations labeled include OSU, Central Oregon Community College, Summit HS, Les Schwab Amphitheater, The Old Mill District, Vince Genna Stadium, Bend Senior HS, Marshall HS, Wagner Mall, Mountain View HS, Saint Charles Medical Center, The Forum Shopping Center, Bend Senior Center, Bend Factory Stores, Cascade Village Shopping Center, Sky View MS, Pilot Butte MS, and High Desert MS. Major roads shown include Old Bend Redmond Hwy, US-20, US-97, and various local streets like NW 41st St, NW 44th St, NW 47th St, NW 50th St, NW 53rd St, NW 56th St, NW 59th St, NW 62nd St, NW 65th St, NW 68th St, NW 71st St, NW 74th St, NW 77th St, NW 80th St, NW 83rd St, NW 86th St, NW 89th St, NW 92nd St, NW 95th St, NW 98th St, NW 101st St, NW 104th St, NW 107th St, NW 110th St, NW 113th St, NW 116th St, NW 119th St, NW 122nd St, NW 125th St, NW 128th St, NW 131st St, NW 134th St, NW 137th St, NW 140th St, NW 143rd St, NW 146th St, NW 149th St, NW 152nd St, NW 155th St, NW 158th St, NW 161st St, NW 164th St, NW 167th St, NW 170th St, NW 173rd St, NW 176th St, NW 179th St, NW 182nd St, NW 185th St, NW 188th St, NW 191st St, NW 194th St, NW 197th St, NW 200th St, NW 203rd St, NW 206th St, NW 209th St, NW 212th St, NW 215th St, NW 218th St, NW 221st St, NW 224th St, NW 227th St, NW 230th St, NW 233rd St, NW 236th St, NW 239th St, NW 242nd St, NW 245th St, NW 248th St, NW 251st St, NW 254th St, NW 257th St, NW 260th St, NW 263rd St, NW 266th St, NW 269th St, NW 272nd St, NW 275th St, NW 278th St, NW 281st St, NW 284th St, NW 287th St, NW 290th St, NW 293rd St, NW 296th St, NW 299th St, NW 302nd St, NW 305th St, NW 308th St, NW 311th St, NW 314th St, NW 317th St, NW 320th St, NW 323rd St, NW 326th St, NW 329th St, NW 332nd St, NW 335th St, NW 338th St, NW 341st St, NW 344th St, NW 347th St, NW 350th St, NW 353rd St, NW 356th St, NW 359th St, NW 362nd St, NW 365th St, NW 368th St, NW 371st St, NW 374th St, NW 377th St, NW 380th St, NW 383rd St, NW 386th St, NW 389th St, NW 392nd St, NW 395th St, NW 398th St, NW 401st St, NW 404th St, NW 407th St, NW 410th St, NW 413th St, NW 416th St, NW 419th St, NW 422nd St, NW 425th St, NW 428th St, NW 431st St, NW 434th St, NW 437th St, NW 440th St, NW 443rd St, NW 446th St, NW 449th St, NW 452nd St, NW 455th St, NW 458th St, NW 461st St, NW 464th St, NW 467th St, NW 470th St, NW 473rd St, NW 476th St, NW 479th St, NW 482nd St, NW 485th St, NW 488th St, NW 491st St, NW 494th St, NW 497th St, NW 500th St, NW 503rd St, NW 506th St, NW 509th St, NW 512nd St, NW 515th St, NW 518th St, NW 521st St, NW 524th St, NW 527th St, NW 530th St, NW 533rd St, NW 536th St, NW 539th St, NW 542nd St, NW 545th St, NW 548th St, NW 551st St, NW 554th St, NW 557th St, NW 560th St, NW 563rd St, NW 566th St, NW 569th St, NW 572nd St, NW 575th St, NW 578th St, NW 581st St, NW 584th St, NW 587th St, NW 590th St, NW 593rd St, NW 596th St, NW 599th St, NW 602nd St, NW 605th St, NW 608th St, NW 611th St, NW 614th St, NW 617th St, NW 620th St, NW 623rd St, NW 626th St, NW 629th St, NW 632nd St, NW 635th St, NW 638th St, NW 641st St, NW 644th St, NW 647th St, NW 650th St, NW 653rd St, NW 656th St, NW 659th St, NW 662nd St, NW 665th St, NW 668th St, NW 671st St, NW 674th St, NW 677th St, NW 680th St, NW 683rd St, NW 686th St, NW 689th St, NW 692nd St, NW 695th St, NW 698th St, NW 701st St, NW 704th St, NW 707th St, NW 710th St, NW 713th St, NW 716th St, NW 719th St, NW 722nd St, NW 725th St, NW 728th St, NW 731st St, NW 734th St, NW 737th St, NW 740th St, NW 743rd St, NW 746th St, NW 749th St, NW 752nd St, NW 755th St, NW 758th St, NW 761st St, NW 764th St, NW 767th St, NW 770th St, NW 773rd St, NW 776th St, NW 779th St, NW 782nd St, NW 785th St, NW 788th St, NW 791st St, NW 794th St, NW 797th St, NW 800th St, NW 803rd St, NW 806th St, NW 809th St, NW 812nd St, NW 815th St, NW 818th St, NW 821st St, NW 824th St, NW 827th St, NW 830th St, NW 833rd St, NW 836th St, NW 839th St, NW 842nd St, NW 845th St, NW 848th St, NW 851st St, NW 854th St, NW 857th St, NW 860th St, NW 863rd St, NW 866th St, NW 869th St, NW 872nd St, NW 875th St, NW 878th St, NW 881st St, NW 884th St, NW 887th St, NW 890th St, NW 893rd St, NW 896th St, NW 899th St, NW 902nd St, NW 905th St, NW 908th St, NW 911th St, NW 914th St, NW 917th St, NW 920th St, NW 923rd St, NW 926th St, NW 929th St, NW 932nd St, NW 935th St, NW 938th St, NW 941st St, NW 944th St, NW 947th St, NW 950th St, NW 953rd St, NW 956th St, NW 959th St, NW 962nd St, NW 965th St, NW 968th St, NW 971st St, NW 974th St, NW 977th St, NW 980th St, NW 983rd St, NW 986th St, NW 989th St, NW 992nd St, NW 995th St, NW 998th St, NW 1001st St, NW 1004th St, NW 1007th St, NW 1010th St, NW 1013th St, NW 1016th St, NW 1019th St, NW 1022nd St, NW 1025th St, NW 1028th St, NW 1031st St, NW 1034th St, NW 1037th St, NW 1040th St, NW 1043rd St, NW 1046th St, NW 1049th St, NW 1052nd St, NW 1055th St, NW 1058th St, NW 1061st St, NW 1064th St, NW 1067th St, NW 1070th St, NW 1073rd St, NW 1076th St, NW 1079th St, NW 1082nd St, NW 1085th St, NW 1088th St, NW 1091st St, NW 1094th St, NW 1097th St, NW 1100th St, NW 1103rd St, NW 1106th St, NW 1109th St, NW 1112nd St, NW 1115th St, NW 1118th St, NW 1121st St, NW 1124th St, NW 1127th St, NW 1130th St, NW 1133rd St, NW 1136th St, NW 1139th St, NW 1142nd St, NW 1145th St, NW 1148th St, NW 1151st St, NW 1154th St, NW 1157th St, NW 1160th St, NW 1163rd St, NW 1166th St, NW 1169th St, NW 1172nd St, NW 1175th St, NW 1178th St, NW 1181st St, NW 1184th St, NW 1187th St, NW 1190th St, NW 1193rd St, NW 1196th St, NW 1199th St, NW 1202nd St, NW 1205th St, NW 1208th St, NW 1211st St, NW 1214th St, NW 1217th St, NW 1220th St, NW 1223rd St, NW 1226th St, NW 1229th St, NW 1232nd St, NW 1235th St, NW 1238th St, NW 1241st St, NW 1244th St, NW 1247th St, NW 1250th St, NW 1253rd St, NW 1256th St, NW 1259th St, NW 1262nd St, NW 1265th St, NW 1268th St, NW 1271st St, NW 1274th St, NW 1277th St, NW 1280th St, NW 1283rd St, NW 1286th St, NW 1289th St, NW 1292nd St, NW 1295th St, NW 1298th St, NW 1301st St, NW 1304th St, NW 1307th St, NW 1310th St, NW 1313rd St, NW 1316th St, NW 1319th St, NW 1322nd St, NW 1325th St, NW 1328th St, NW 1331st St, NW 1334th St, NW 1337th St, NW 1340th St, NW 1343rd St, NW 1346th St, NW 1349th St, NW 1352nd St, NW 1355th St, NW 1358th St, NW 1361st St, NW 1364th St, NW 1367th St, NW 1370th St, NW 1373rd St, NW 1376th St, NW 1379th St, NW 1382nd St, NW 1385th St, NW 1

Data Sources: City of Bend, Oregon Geospatial Data Clearinghouse



**Household Income at or Below Federal Poverty Line**  
Households per Acre, by Block Groups

- Less than 0.25
- 0.25 - 0.50
- 0.50 - 1.00
- 1.00 - 1.74

Data Source: U.S. Census Bureau, 2005-2009 American Community Survey 5-Year Estimates

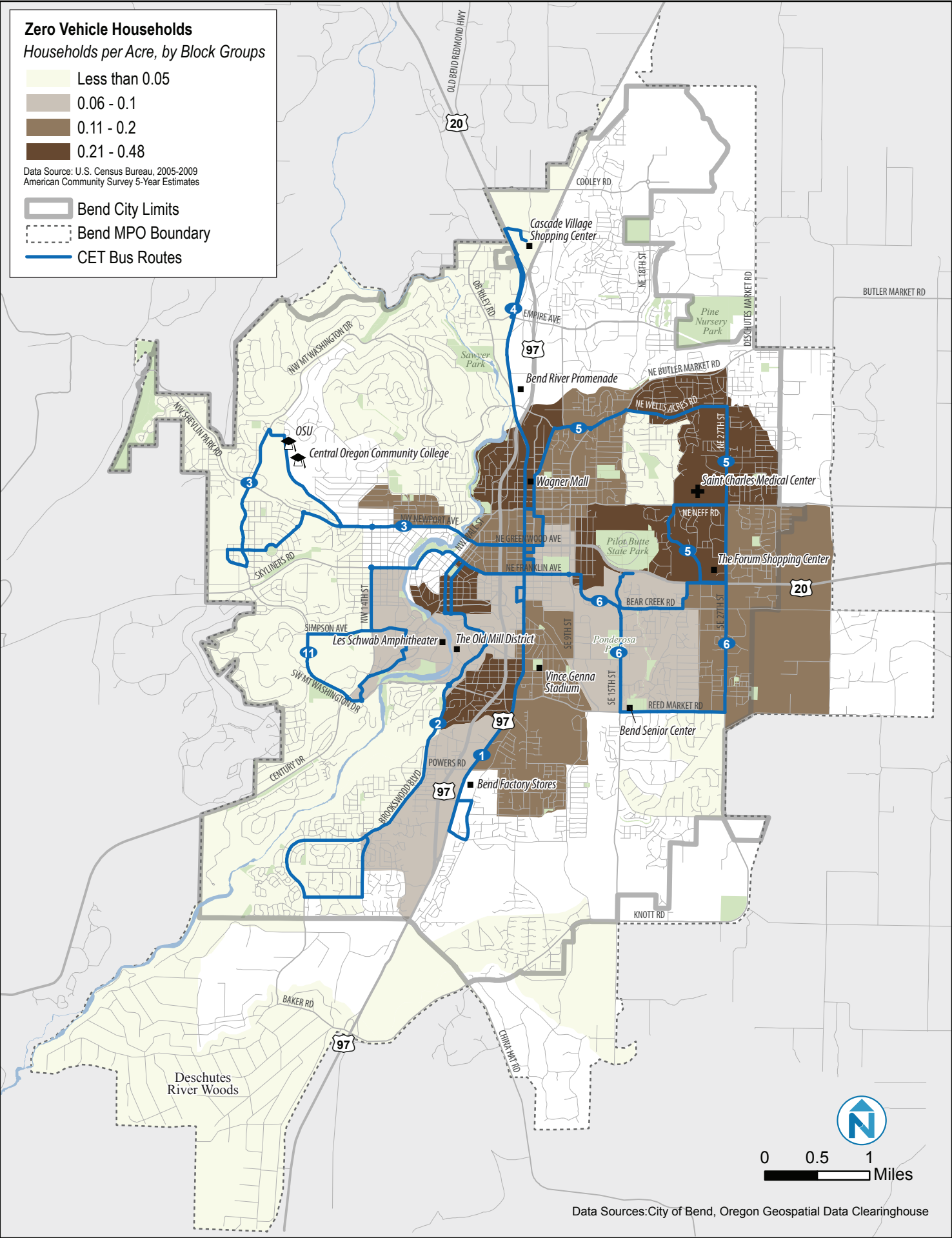
- Bend City Limits
- Bend MPO Boundary
- CET Bus Routes

Map Labels: Cascade Village Shopping Center, Bend River Promenade, Wagner Mall, Saint Charles Medical Center, The Forum Shopping Center, Les Schwab Amphitheater, The Old Mill District, Vince Genna Stadium, Bend Factory Stores, Deschutes River Woods, OSU, Central Oregon Community College, Sawyer Park, Pine Nursery Park, Pilot Butte State Park, Ponderosa Park, Knott Rd, Century Dr, Simpson Ave, NW 14th St, NW 15th St, NW 16th St, NW 17th St, NW 18th St, NW 19th St, NW 20th St, NW 21st St, NW 22nd St, NW 23rd St, NW 24th St, NW 25th St, NW 26th St, NW 27th St, NW 28th St, NW 29th St, NW 30th St, NW 31st St, NW 32nd St, NW 33rd St, NW 34th St, NW 35th St, NW 36th St, NW 37th St, NW 38th St, NW 39th St, NW 40th St, NW 41st St, NW 42nd St, NW 43rd St, NW 44th St, NW 45th St, NW 46th St, NW 47th St, NW 48th St, NW 49th St, NW 50th St, NW 51st St, NW 52nd St, NW 53rd St, NW 54th St, NW 55th St, NW 56th St, NW 57th St, NW 58th St, NW 59th St, NW 60th St, NW 61st St, NW 62nd St, NW 63rd St, NW 64th St, NW 65th St, NW 66th St, NW 67th St, NW 68th St, NW 69th St, NW 70th St, NW 71st St, NW 72nd St, NW 73rd St, NW 74th St, NW 75th St, NW 76th St, NW 77th St, NW 78th St, NW 79th St, NW 80th St, NW 81st St, NW 82nd St, NW 83rd St, NW 84th St, NW 85th St, NW 86th St, NW 87th St, NW 88th St, NW 89th St, NW 90th St, NW 91st St, NW 92nd St, NW 93rd St, NW 94th St, NW 95th St, NW 96th St, NW 97th St, NW 98th St, NW 99th St, NW 100th St, NW 101st St, NW 102nd St, NW 103rd St, NW 104th St, NW 105th St, NW 106th St, NW 107th St, NW 108th St, NW 109th St, NW 110th St, NW 111th St, NW 112th St, NW 113th St, NW 114th St, NW 115th St, NW 116th St, NW 117th St, NW 118th St, NW 119th St, NW 120th St, NW 121st St, NW 122nd St, NW 123rd St, NW 124th St, NW 125th St, NW 126th St, NW 127th St, NW 128th St, NW 129th St, NW 130th St, NW 131st St, NW 132nd St, NW 133rd St, NW 134th St, NW 135th St, NW 136th St, NW 137th St, NW 138th St, NW 139th St, NW 140th St, NW 141st St, NW 142nd St, NW 143rd St, NW 144th St, NW 145th St, NW 146th St, NW 147th St, NW 148th St, NW 149th St, NW 150th St, NW 151st St, NW 152nd St, NW 153rd St, NW 154th St, NW 155th St, NW 156th St, NW 157th St, NW 158th St, NW 159th St, NW 160th St, NW 161st St, NW 162nd St, NW 163rd St, NW 164th St, NW 165th St, NW 166th St, NW 167th St, NW 168th St, NW 169th St, NW 170th St, NW 171st St, NW 172nd St, NW 173rd St, NW 174th St, NW 175th St, NW 176th St, NW 177th St, NW 178th St, NW 179th St, NW 180th St, NW 181st St, NW 182nd St, NW 183rd St, NW 184th St, NW 185th St, NW 186th St, NW 187th St, NW 188th St, NW 189th St, NW 190th St, NW 191st St, NW 192nd St, NW 193rd St, NW 194th St, NW 195th St, NW 196th St, NW 197th St, NW 198th St, NW 199th St, NW 200th St, NW 201st St, NW 202nd St, NW 203rd St, NW 204th St, NW 205th St, NW 206th St, NW 207th St, NW 208th St, NW 209th St, NW 210th St, NW 211st St, NW 212nd St, NW 213rd St, NW 214th St, NW 215th St, NW 216th St, NW 217th St, NW 218th St, NW 219th St, NW 220th St, NW 221st St, NW 222nd St, NW 223rd St, NW 224th St, NW 225th St, NW 226th St, NW 227th St, NW 228th St, NW 229th St, NW 230th St, NW 231st St, NW 232nd St, NW 233rd St, NW 234th St, NW 235th St, NW 236th St, NW 237th St, NW 238th St, NW 239th St, NW 240th St, NW 241st St, NW 242nd St, NW 243rd St, NW 244th St, NW 245th St, NW 246th St, NW 247th St, NW 248th St, NW 249th St, NW 250th St, NW 251st St, NW 252nd St, NW 253rd St, NW 254th St, NW 255th St, NW 256th St, NW 257th St, NW 258th St, NW 259th St, NW 260th St, NW 261st St, NW 262nd St, NW 263rd St, NW 264th St, NW 265th St, NW 266th St, NW 267th St, NW 268th St, NW 269th St, NW 270th St, NW 271st St, NW 272nd St, NW 273rd St, NW 274th St, NW 275th St, NW 276th St, NW 277th St, NW 278th St, NW 279th St, NW 280th St, NW 281st St, NW 282nd St, NW 283rd St, NW 284th St, NW 285th St, NW 286th St, NW 287th St, NW 288th St, NW 289th St, NW 290th St, NW 291st St, NW 292nd St, NW 293rd St, NW 294th St, NW 295th St, NW 296th St, NW 297th St, NW 298th St, NW 299th St, NW 300th St, NW 301st St, NW 302nd St, NW 303rd St, NW 304th St, NW 305th St, NW 306th St, NW 307th St, NW 308th St, NW 309th St, NW 310th St, NW 311st St, NW 312nd St, NW 313rd St, NW 314th St, NW 315th St, NW 316th St, NW 317th St, NW 318th St, NW 319th St, NW 320th St, NW 321st St, NW 322nd St, NW 323rd St, NW 324th St, NW 325th St, NW 326th St, NW 327th St, NW 328th St, NW 329th St, NW 330th St, NW 331st St, NW 332nd St, NW 333rd St, NW 334th St, NW 335th St, NW 336th St, NW 337th St, NW 338th St, NW 339th St, NW 340th St, NW 341st St, NW 342nd St, NW 343rd St, NW 344th St, NW 345th St, NW 346th St, NW 347th St, NW 348th St, NW 349th St, NW 350th St, NW 351st St, NW 352nd St, NW 353rd St, NW 354th St, NW 355th St, NW 356th St, NW 357th St, NW 358th St, NW 359th St, NW 360th St, NW 361st St, NW 362nd St, NW 363rd St, NW 364th St, NW 365th St, NW 366th St, NW 367th St, NW 368th St, NW 369th St, NW 370th St, NW 371st St, NW 372nd St, NW 373rd St, NW 374th St, NW 375th St, NW 376th St, NW 377th St, NW 378th St, NW 379th St, NW 380th St, NW 381st St, NW 382nd St, NW 383rd St, NW 384th St, NW 385th St, NW 386th St, NW 387th St, NW 388th St, NW 389th St, NW 390th St, NW 391st St, NW 392nd St, NW 393rd St, NW 394th St, NW 395th St, NW 396th St, NW 397th St, NW 398th St, NW 399th St, NW 400th St, NW 401st St, NW 402nd St, NW 403rd St, NW 404th St, NW 405th St, NW 406th St, NW 407th St, NW 408th St, NW 409th St, NW 410th St, NW 411st St, NW 412nd St, NW 413rd St, NW 414th St, NW 415th St, NW 416th St, NW 417th St, NW 418th St, NW 419th St, NW 420th St, NW 421st St, NW 422nd St, NW 423rd St, NW 424th St, NW 425th St, NW 426th St, NW 427th St, NW 428th St, NW 429th St, NW 430th St, NW 431st St, NW 432nd St, NW 433rd St, NW 434th St, NW 435th St, NW 436th St, NW 437th St, NW 438th St, NW 439th St, NW 440th St, NW 441st St, NW 442nd St, NW 443rd St, NW 444th St, NW 445th St, NW 446th St, NW 447th St, NW 448th St, NW 449th St, NW 450th St, NW 451st St, NW 452nd St, NW 453rd St, NW 454th St, NW 455th St, NW 456th St, NW 457th St, NW 458th St, NW 459th St, NW 460th St, NW 461st St, NW 462nd St, NW 463rd St, NW 464th St, NW 465th St, NW 466th St, NW 467th St, NW 468th St, NW 469th St, NW 470th St, NW 471st St, NW 472nd St, NW 473rd St, NW 474th St, NW 475th St, NW 476th St, NW 477th St, NW 478th St, NW 479th St, NW 480th St, NW 481st St, NW 482nd St, NW 483rd St, NW 484th St, NW 485th St, NW 486th St, NW 487th St, NW 488th St,

Data Sources: City of Bend, Oregon Geospatial Data Clearinghouse



Figure 2-6 Density of No-Vehicle Households, 2005-2009 5-Year Average



**Minority Population\***  
Persons per Acre, by Census Block

- Less than 0.01
- 1.1 - 2.5
- 2.6 - 5.0
- 5.1 - 10.0
- 10.1 - 41.1

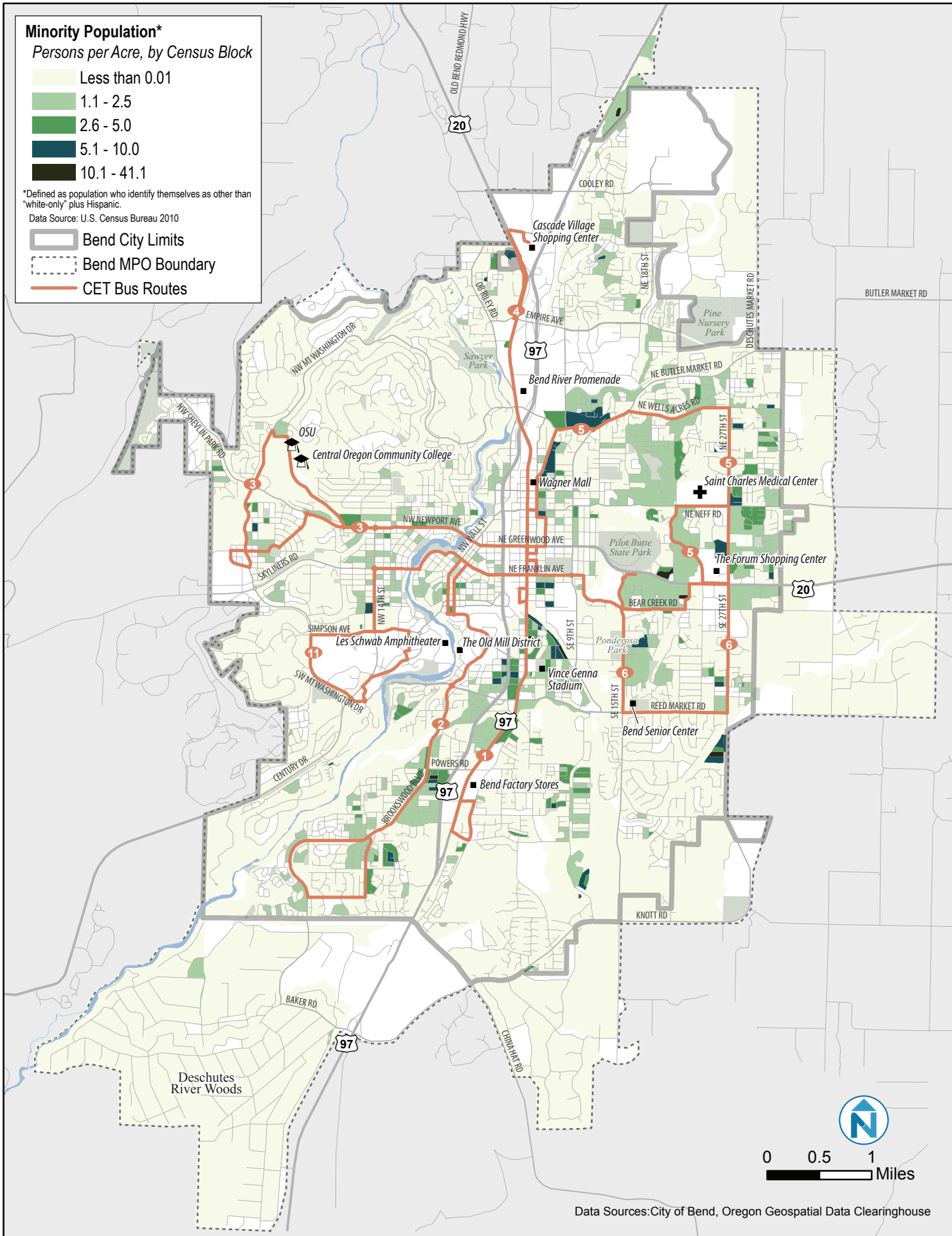
\*Defined as population who identify themselves as other than "white-only" plus Hispanic.  
Data Source: U.S. Census Bureau 2010

- Bend City Limits
- Bend MPO Boundary
- CET Bus Routes

Map Labels: Cascade Village Shopping Center, Bend River Promenade, Wagner Mall, Saint Charles Medical Center, The Forum Shopping Center, Les Schwab Amphitheater, The Old Mill District, Vince Genna Stadium, Bend Senior Center, Bend Factory Stores, Deschutes River Woods, OSU, Central Oregon Community College, Sawyer Park, Pine Nursery Park, Pilot Butte State Park, Ponderosa Park, Knott Rd, Century Dr, Baker Rd, Chinnup Rd, Deschutes Market Rd, NE Butler Market Rd, NE Wells Acres Rd, NE Neff Rd, Bear Creek Rd, Reed Market Rd, SE 15th St, SE 27th St, SE 9th St, NW Wall St, NW Newport Ave, NW Mt Washington Dr, NW Chestnut Park Rd, Skyline Rd, Simpson Ave, Powers Rd, Broadwood Ave, Old Bend Redmond Hwy, Cooley Rd, NE 18th St, Empire Ave, Deschutes Market Rd, Butler Market Rd.

Scale: 0 0.5 1 Miles

Data Sources: City of Bend, Oregon Geospatial Data Clearinghouse



**Population Speaking English Less than "Well"**  
Persons per Acre, by Block Groups

- Less than 0.05
- 0.06 - 0.10
- 0.11 - 0.20
- 0.21 - 0.36

Data Source: U.S. Census Bureau, 2005-2009 American Community Survey 5-Year Estimates

- Bend City Limits
- Bend MPO Boundary
- CET Bus Routes

Map Labels: OSU, Central Oregon Community College, Cascade Village Shopping Center, Bend River Promenade, Wagner Mall, Saint Charles Medical Center, The Forum Shopping Center, Les Schwab Amphitheater, The Old Mill District, Vince Genna Stadium, Bend Senior Center, Bend Factory Stores, Deschutes River Woods, Sawyer Park, Pine Nursery Park, Pilot Butte State Park, Ponderosa Park, Knott Rd, Baker Rd, Century Dr, NW Mt Washington Dr, NW Cheyenne Park Rd, NW 14th St, NW Newport Ave, NW Wall St, NE Greenwood Ave, NE Franklin Ave, NE Butler Market Rd, NE Wells Acres Rd, NE 27th St, NE Neff Rd, Bear Creek Rd, Reed Market Rd, SE 15th St, SE 27th St, Deschutes Market Rd, Butler Market Rd, Cooley Rd, Empire Ave, OR 97, OR 20, Old Bend Redmond Hwy, Deschutes River.



Figure 2-11 Population Density, 2010 U.S. Census

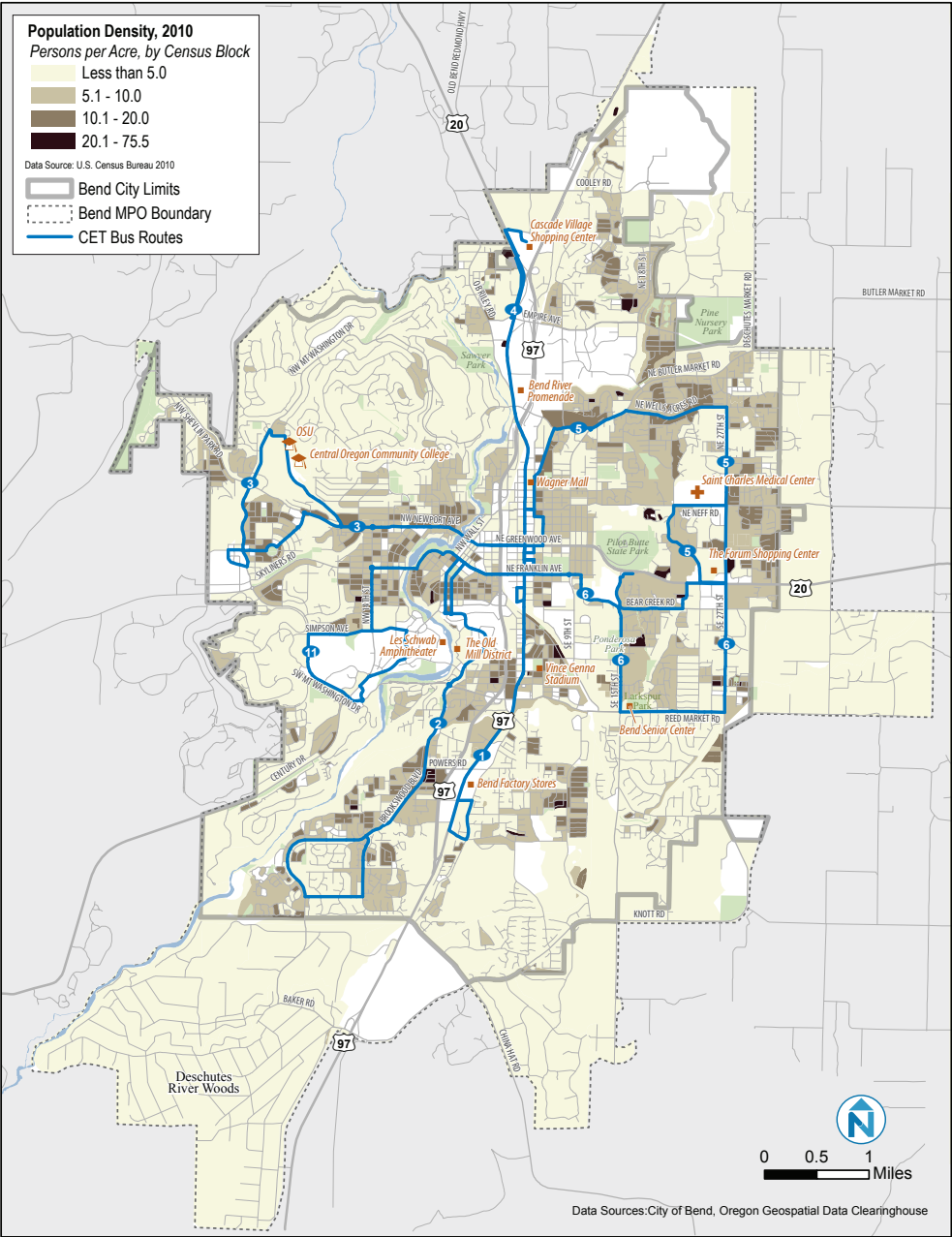


Figure 2-12 Projected Population Density, 2030

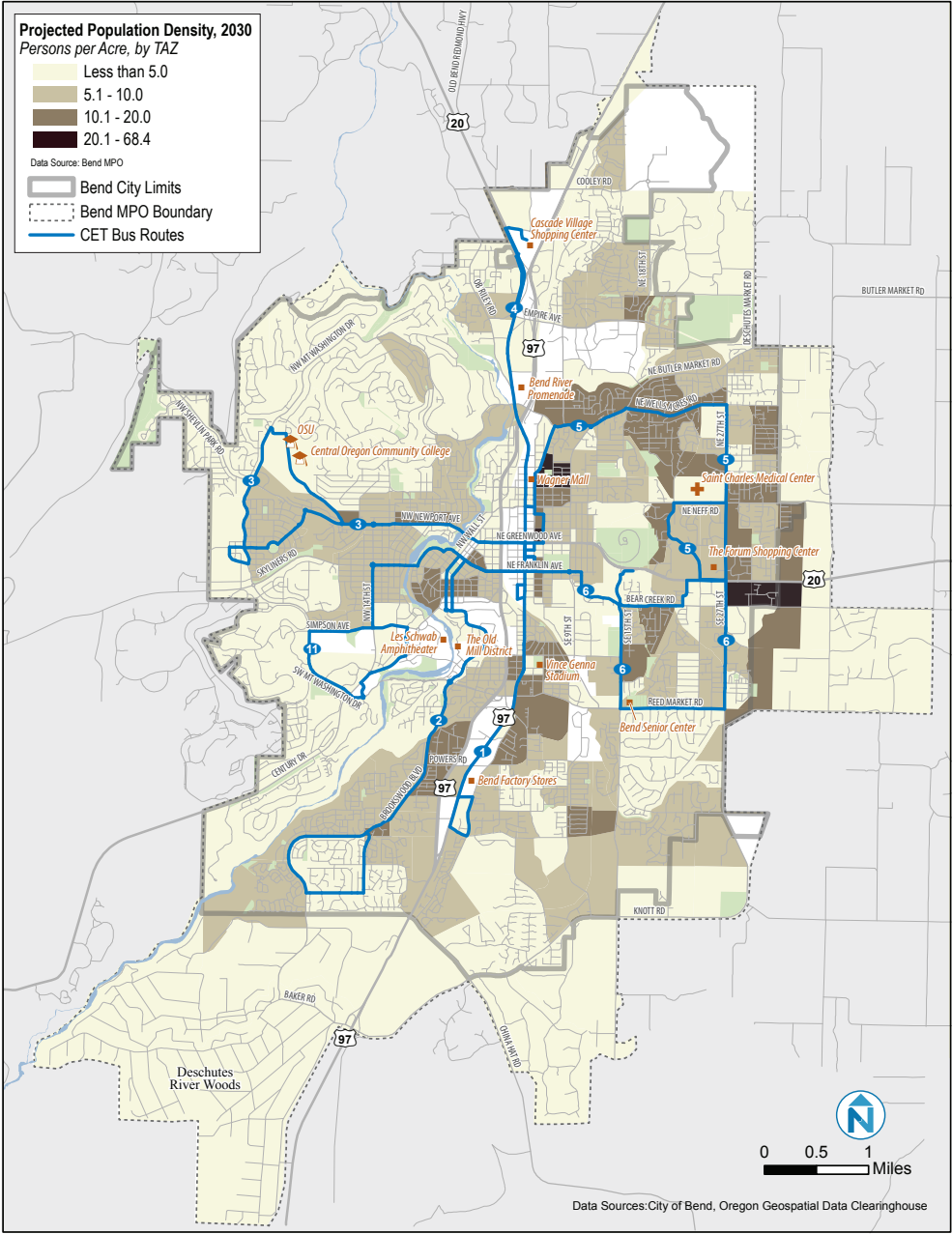


Figure 2-13 Employment Density, 2010

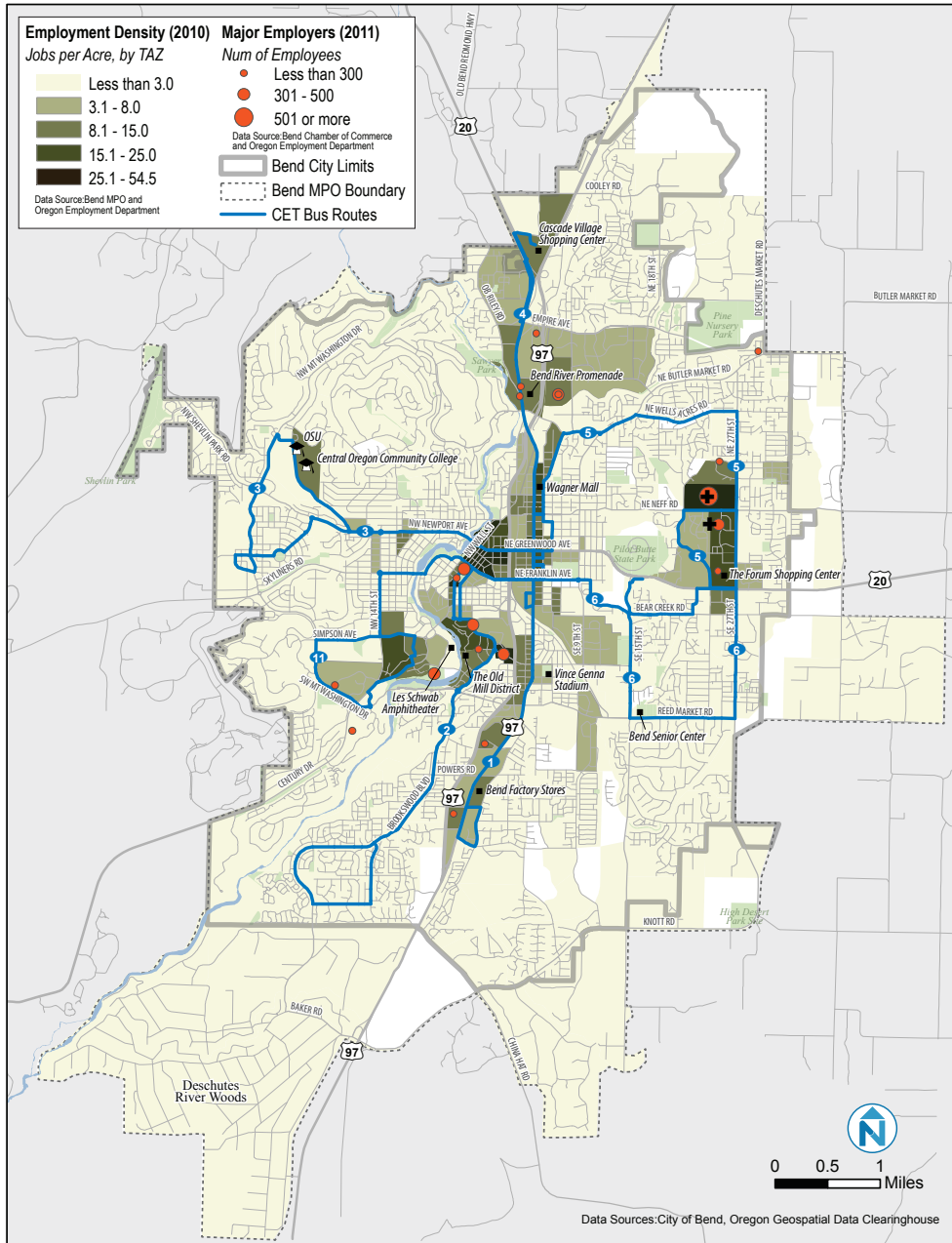


Figure 2-14 Projected Employment Density, 2030

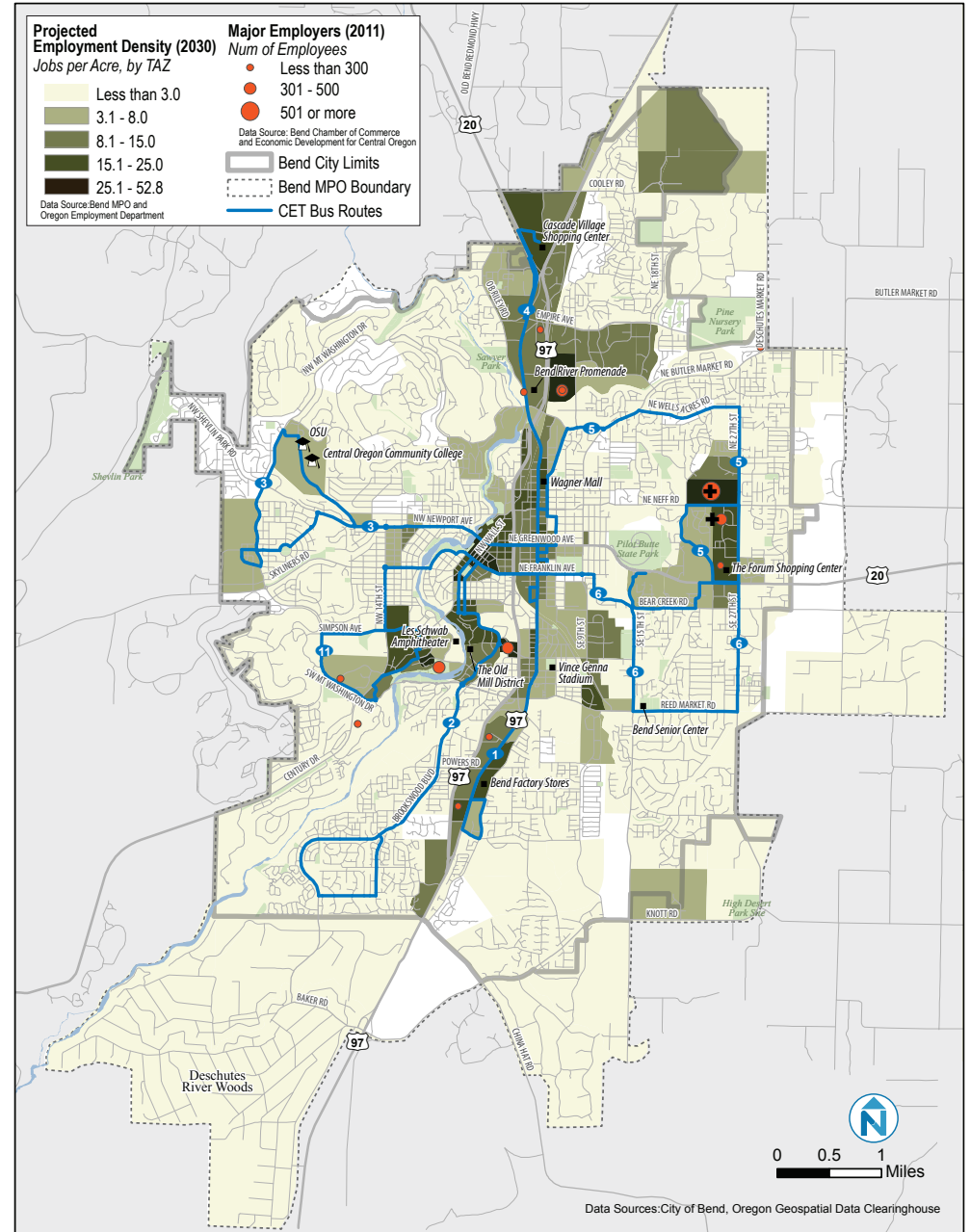


Figure 2-16 Work Locations of Bend Residents, 2009

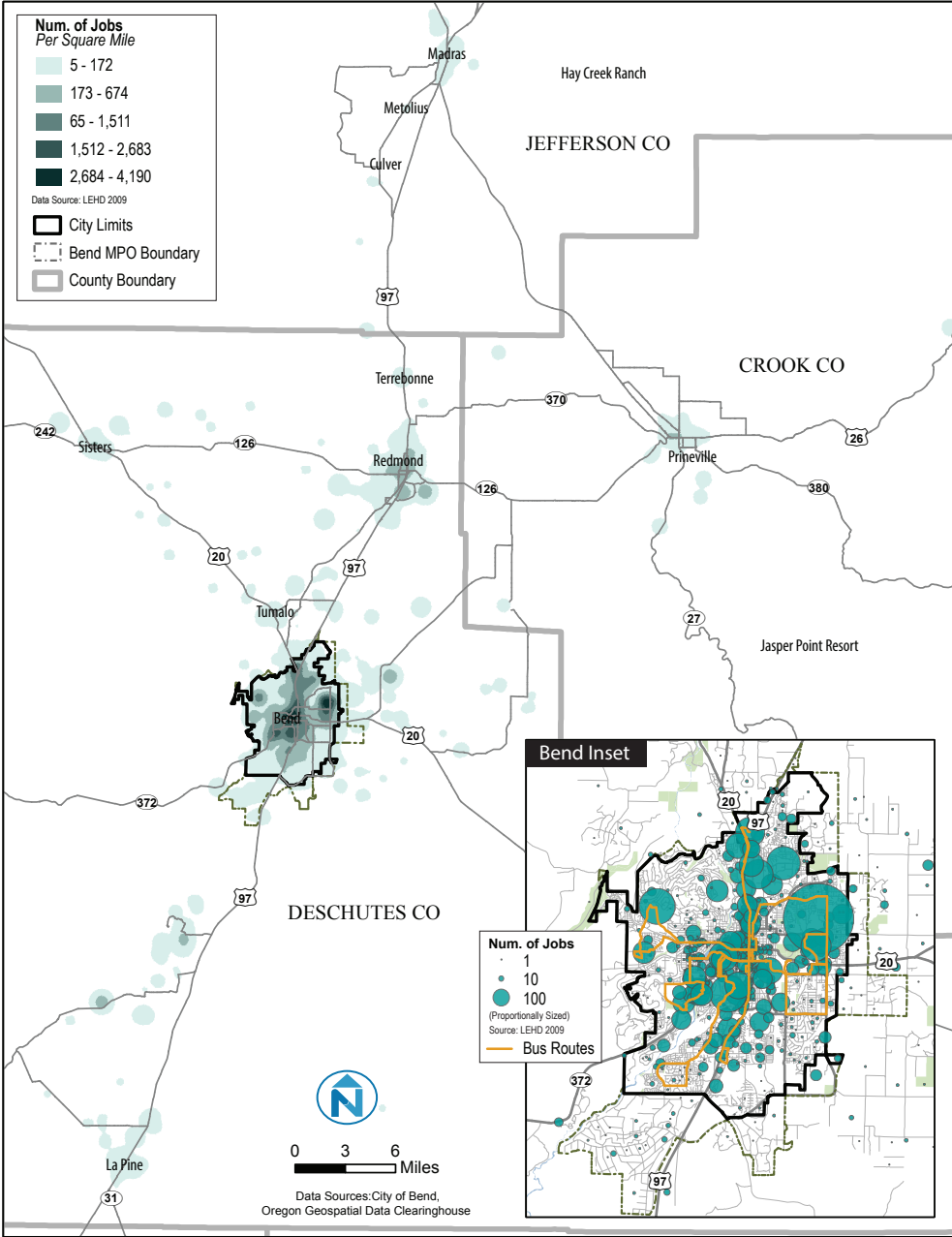
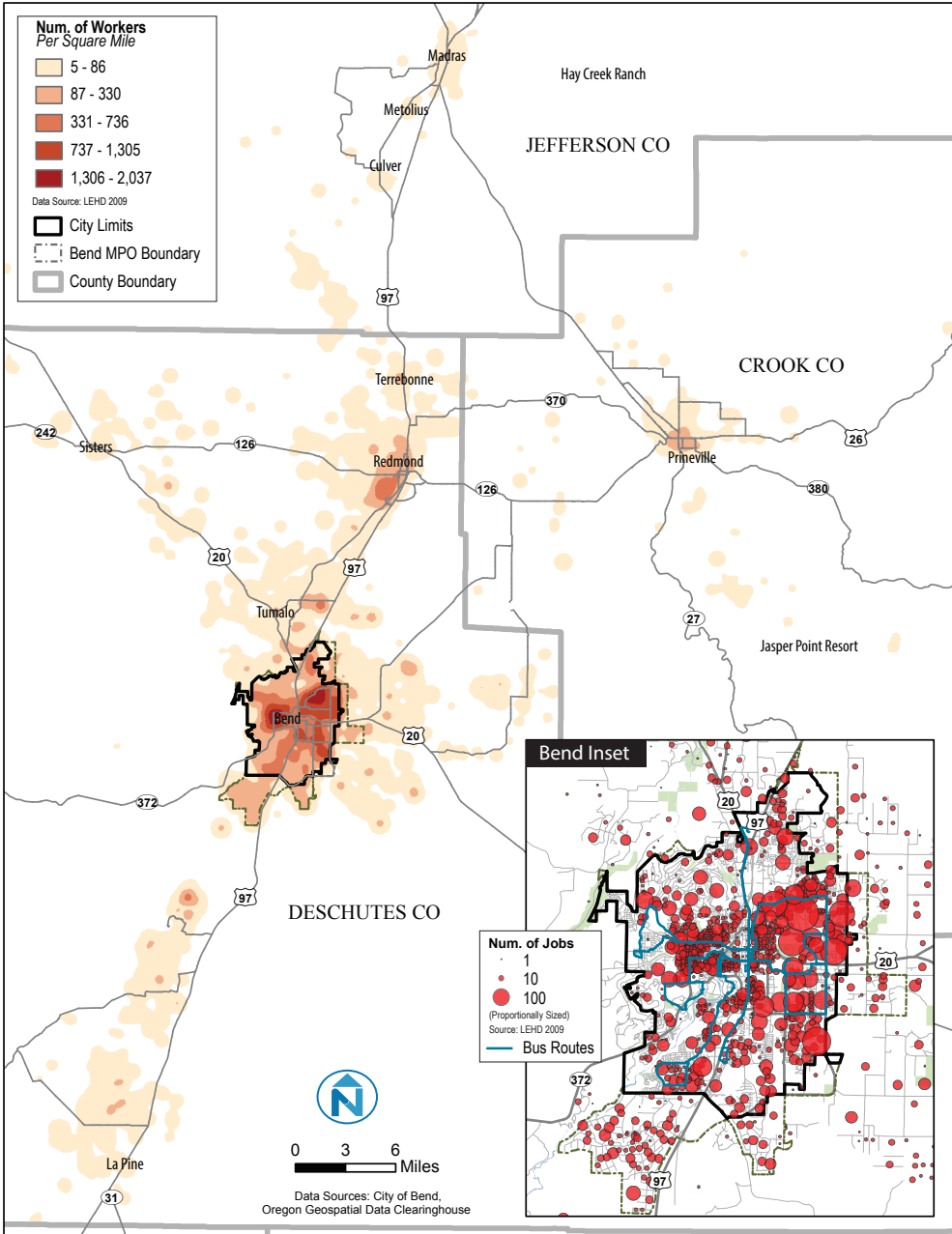


Figure 2-17 Home Locations of Bend Workers, 2009





**Figure 3-2 Existing Transit Services**

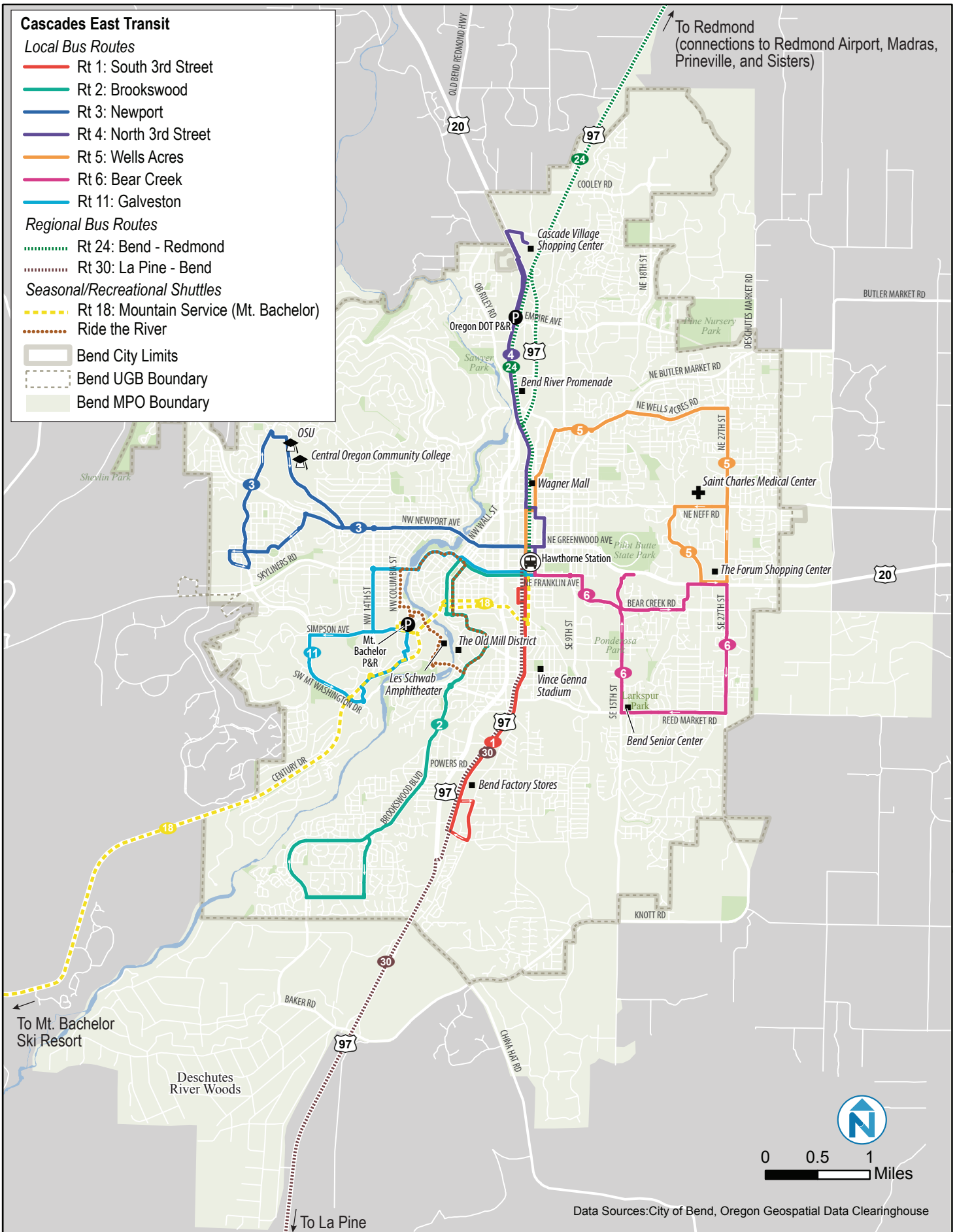
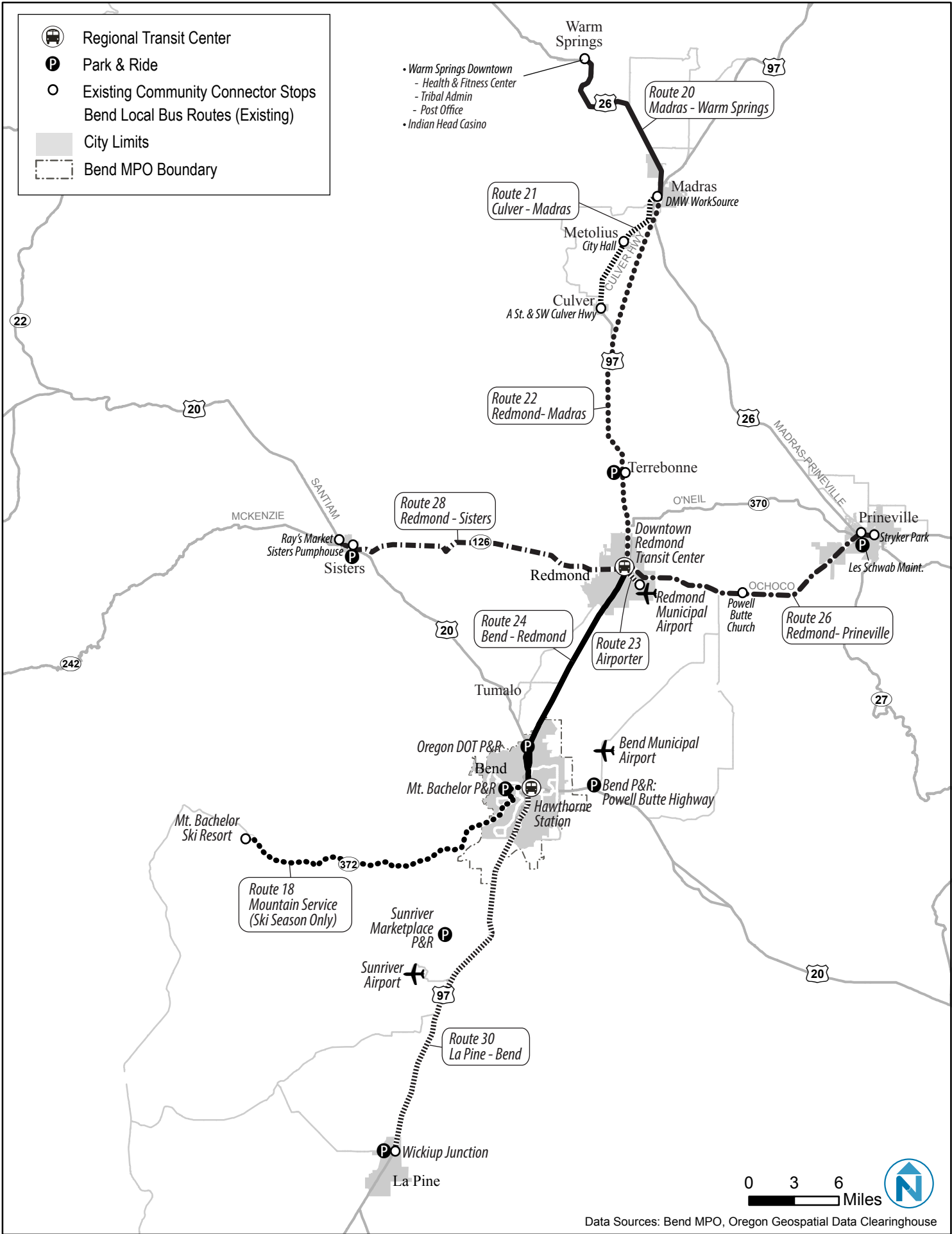


Figure 3-3 Existing Regional Transit Services

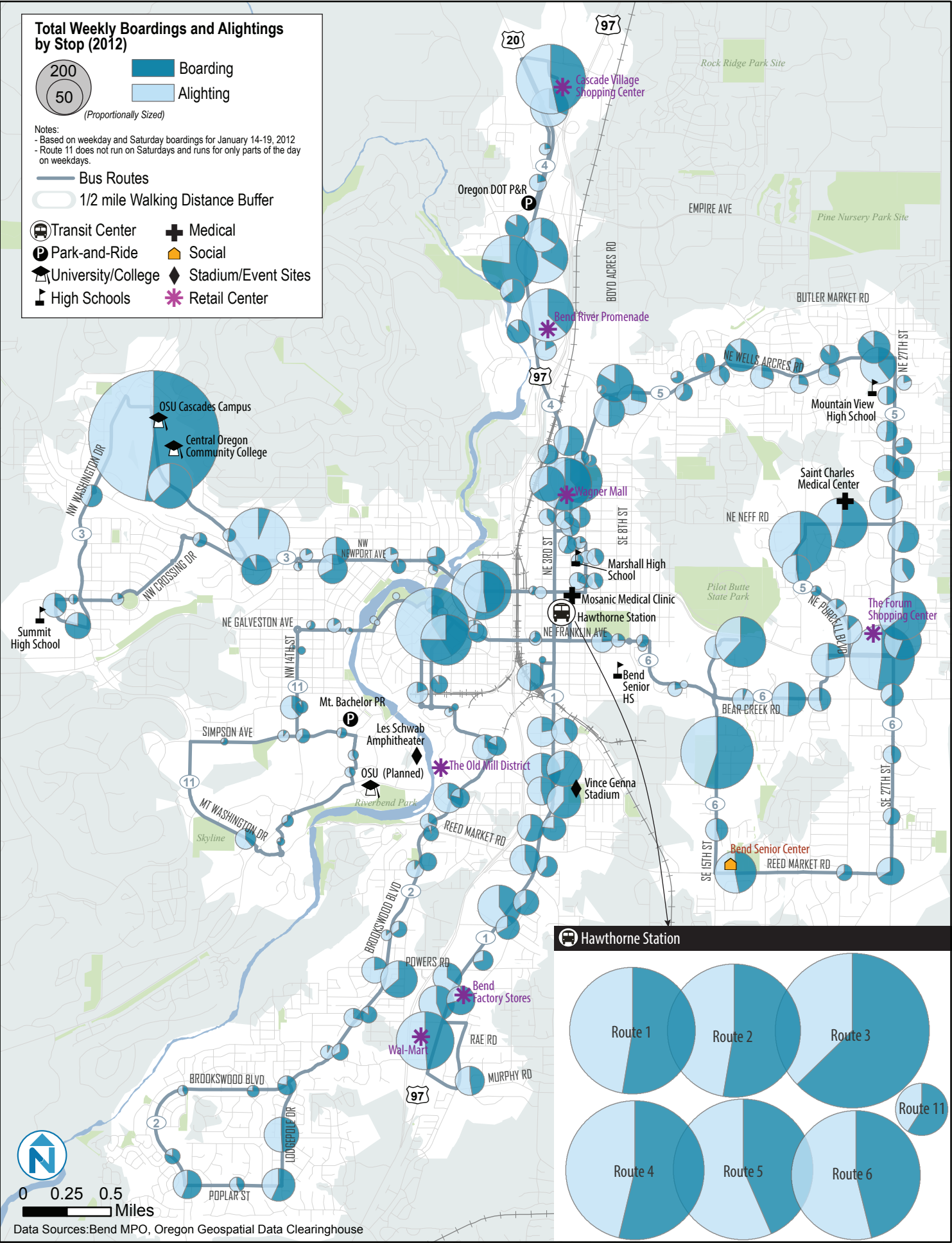


[illegible]

Data Sources:City of Bend, Oregon Geospatial Data Clearinghouse



Figure 3-7 Existing Weekly Transit Boardings and Alightings, 2012



**Major Trip Pairs**  
Number of Trips  
3  
4  
6

Note: based on weekday and Saturday boardings for January 14-19, 2012

Analysis Zones  
Trip Origins / Destinations

Transit Center  
University/College  
Medical  
Retail Center  
Grocery Store  
Social  
Other  
City Boundary  
MPO Boundary  
CET Bus Routes  
1/4 mile Walking Buffers

Trip origins and destinations were aggregated to zones adapted from Transportation Analysis Zones (TAZ) for the Bend area.

0 0.5 1 Miles

Data Sources: City of Bend, Oregon Geospatial Data Clearinghouse

*Trip origins and destinations were aggregated to zones adapted from Transportation Analysis Zones (TAZ) for the Bend area.*



**Major Trip Pairs**  
Number of Trips

- 3
- 4
- 5
- 7

Note: based on an online survey conducted in February and March of 2012

**Legend:**

- Transit Center
- University/College
- Medical
- Retail Center
- Grocery Store
- Social
- Other
- City Boundary
- MPO Boundary
- CET Bus Routes
- 1/4 mile Walking Buffers
- Analysis Zones
- Home Locations
- Work/School Locations

Analysis Zones for trip origins and destinations were adapted from Transportation Analysis Zones (TAZ) for the Bend area.

From Sisters

From Deschutes River Woods

To Sisters

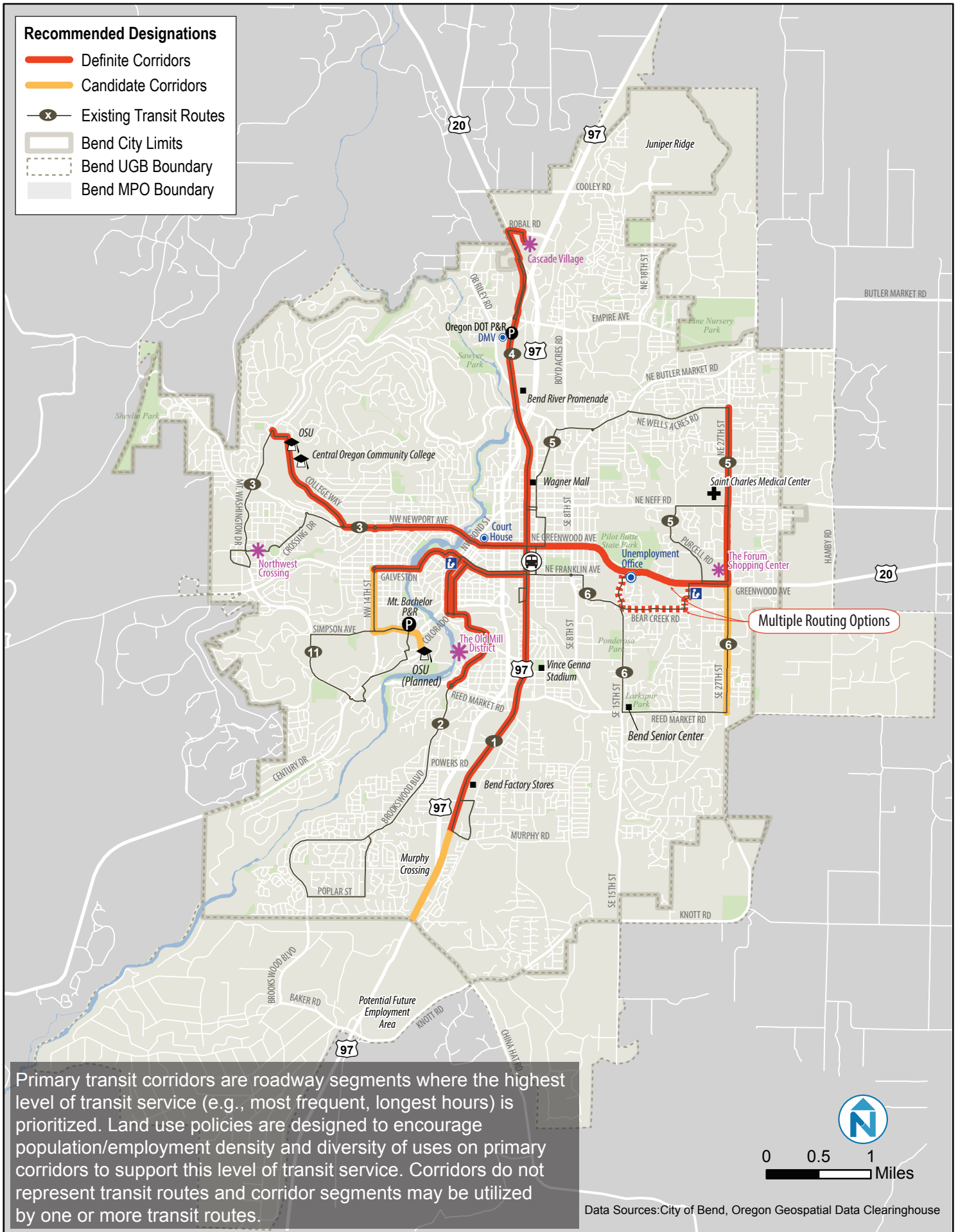
0 0.5 1 Miles

Data Sources: City of Bend, Oregon Geospatial Data Clearinghouse

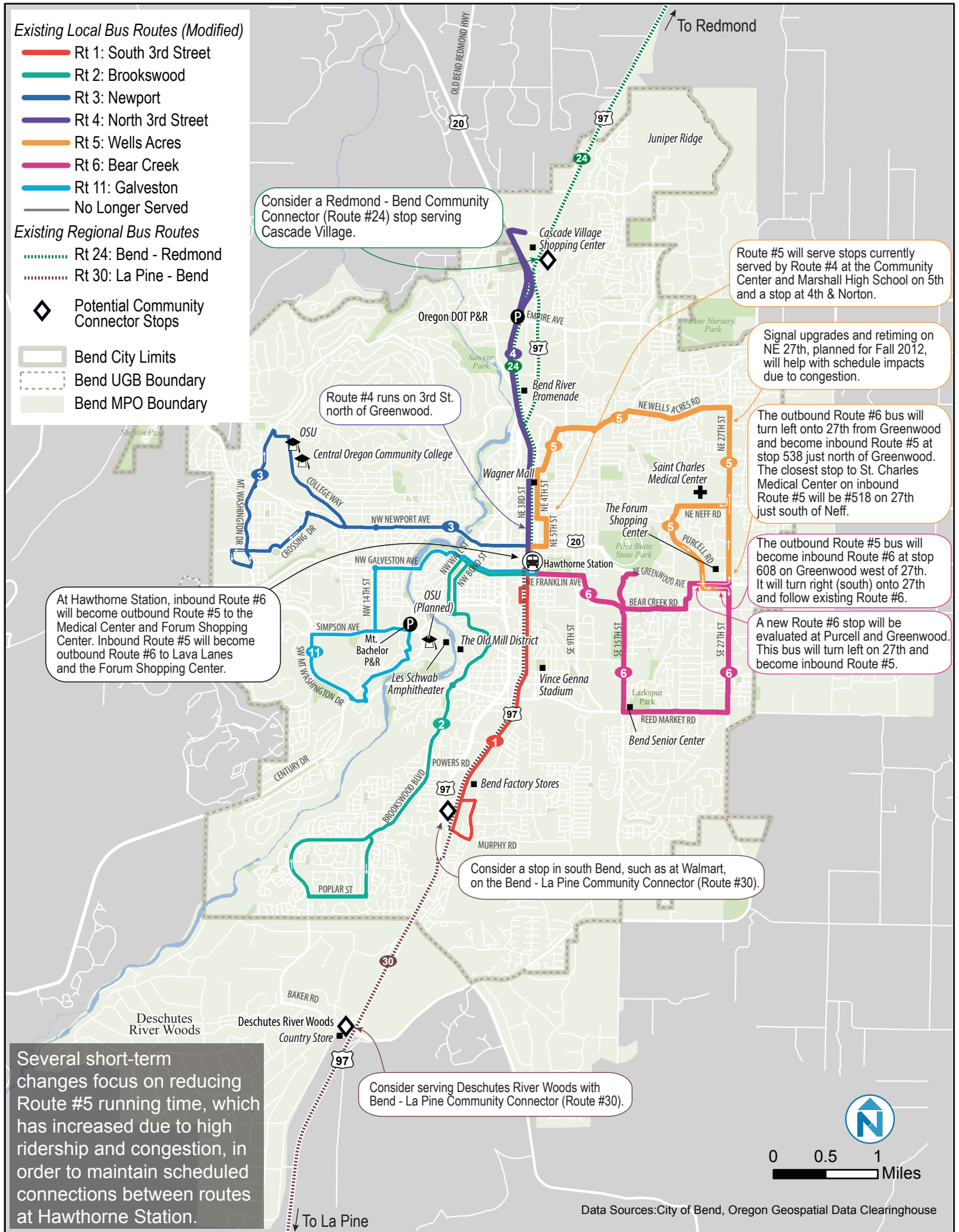
Data Sources: City of Bend, Oregon Geospatial Data Clearinghouse



**Figure 7-4 Primary Transit Corridors**



**Figure 7-12 Short-Term Service Improvements**



**Existing Local Bus Routes (Modified)**

- Rt 1: South 3rd Street
- Rt 2: Brookwood
- Rt 3: Newport
- Rt 4: North 3rd Street
- Rt 5: Wells Acres
- Rt 6: Bear Creek
- Rt 11: Galveston
- No Longer Served

**Existing Regional Bus Routes**

- Rt 24: Bend - Redmond
- Rt 30: La Pine - Bend

**Potential Community Connector Stops**

**Bend City Limits**  
**Bend UGB Boundary**  
**Bend MPO Boundary**

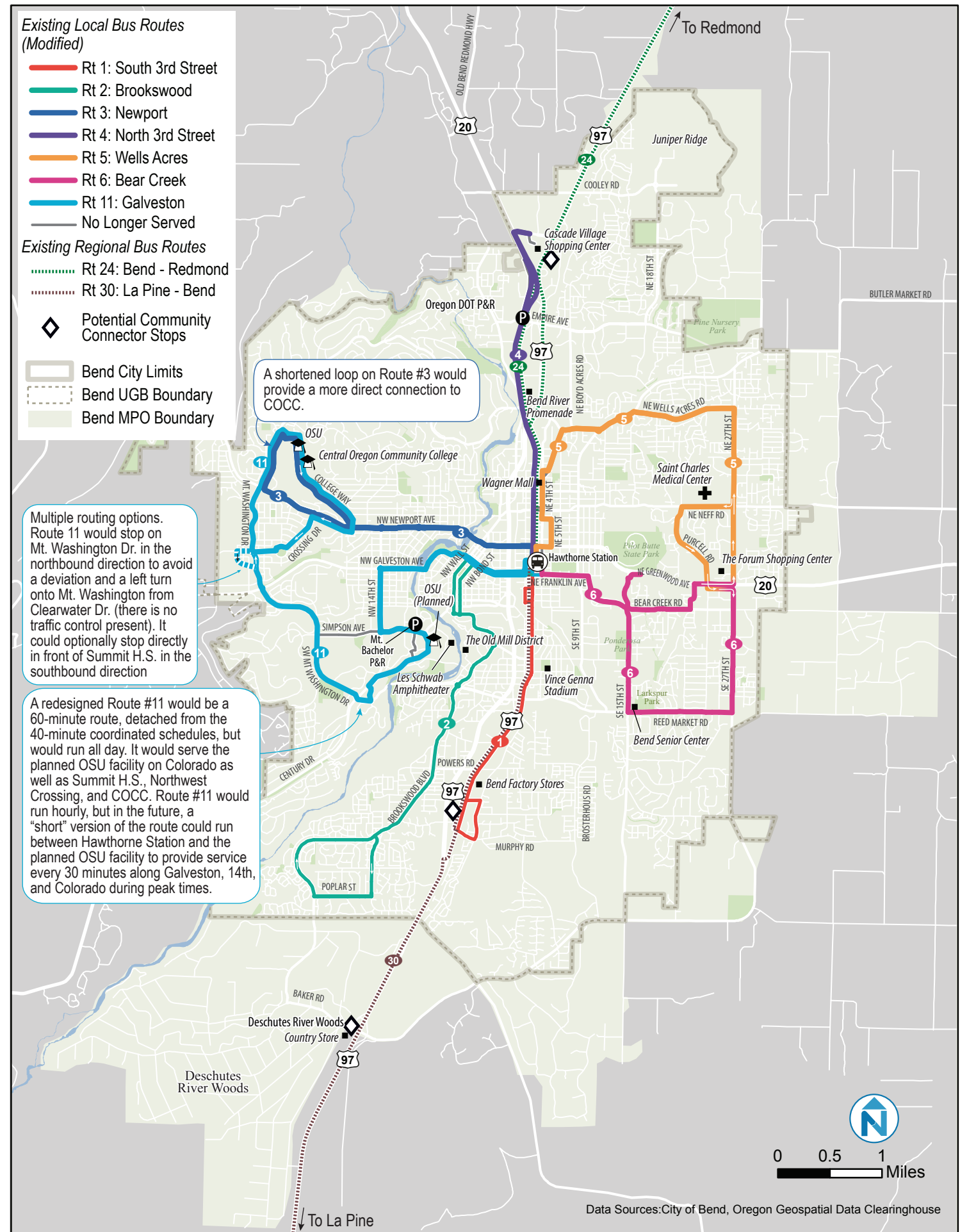
**Callouts:**

- A shortened loop on Route #3 would provide a more direct connection to COCC.
- Multiple routing options. Route 11 would stop on Mt. Washington Dr. in the northbound direction to avoid a deviation and a left turn onto Mt. Washington Dr. (there is no traffic control present). It could optionally stop directly in front of Summit H.S. in the southbound direction.
- A redesigned Route #11 would be a 60-minute route, detached from the 40-minute coordinated schedules, but would run all day. It would serve the planned OSU facility on Colorado as well as Summit H.S., Northwest Crossing, and COCC. Route #11 would run hourly, but in the future, a "short" version of the route could run between Hawthorne Station and the planned OSU facility to provide service every 30 minutes along Galveston, 14th, and Colorado during peak times.

**Map Labels:** OSU, Central Oregon Community College, Wagner Mall, Hawthorne Station, Saint Charles Medical Center, The Forum Shopping Center, Bend Senior Center, Deschutes River Woods Country Store, To Redmond, To La Pine.

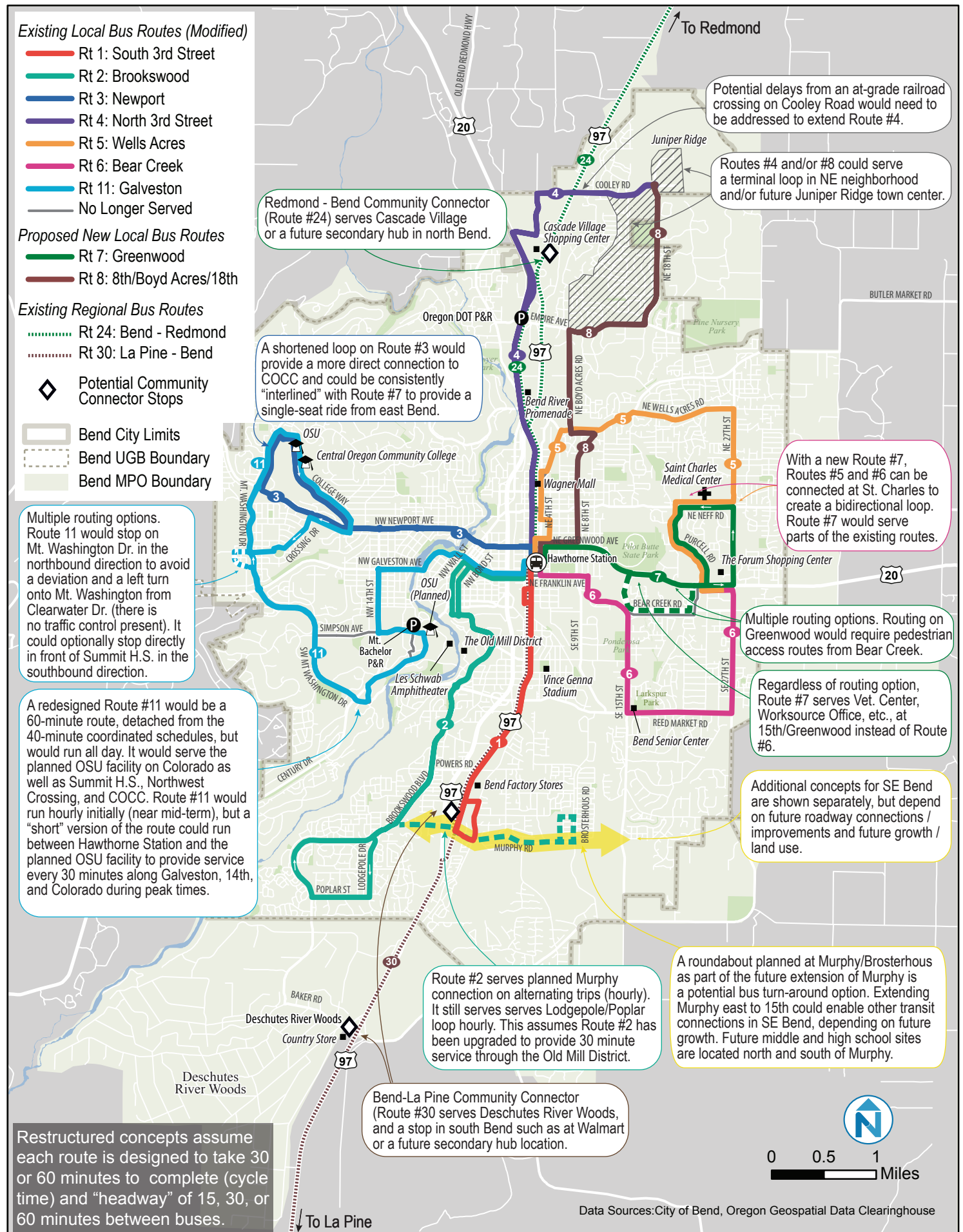
**Scale:** 0 0.5 1 Miles

**Data Sources:** City of Bend, Oregon Geospatial Data Clearinghouse

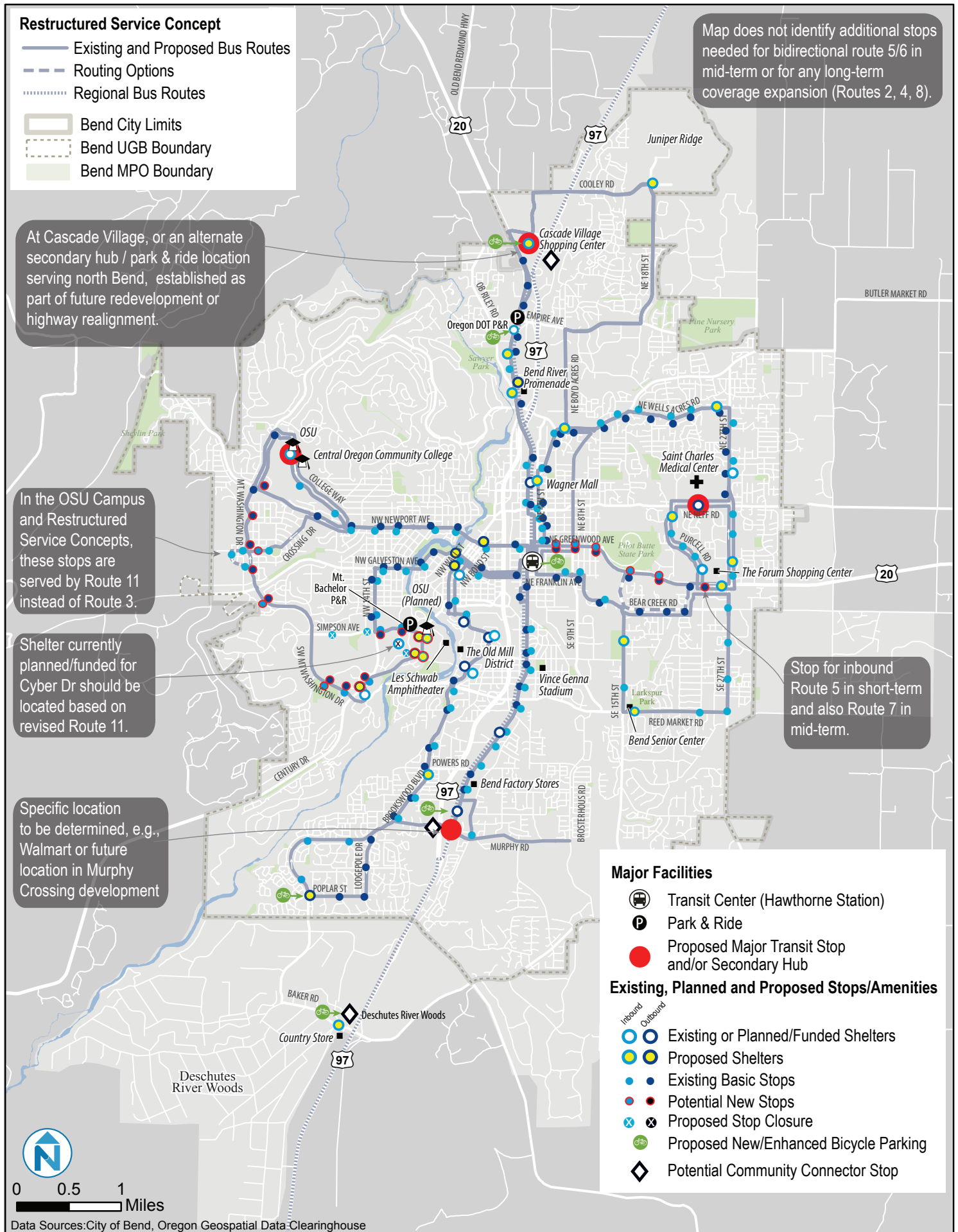




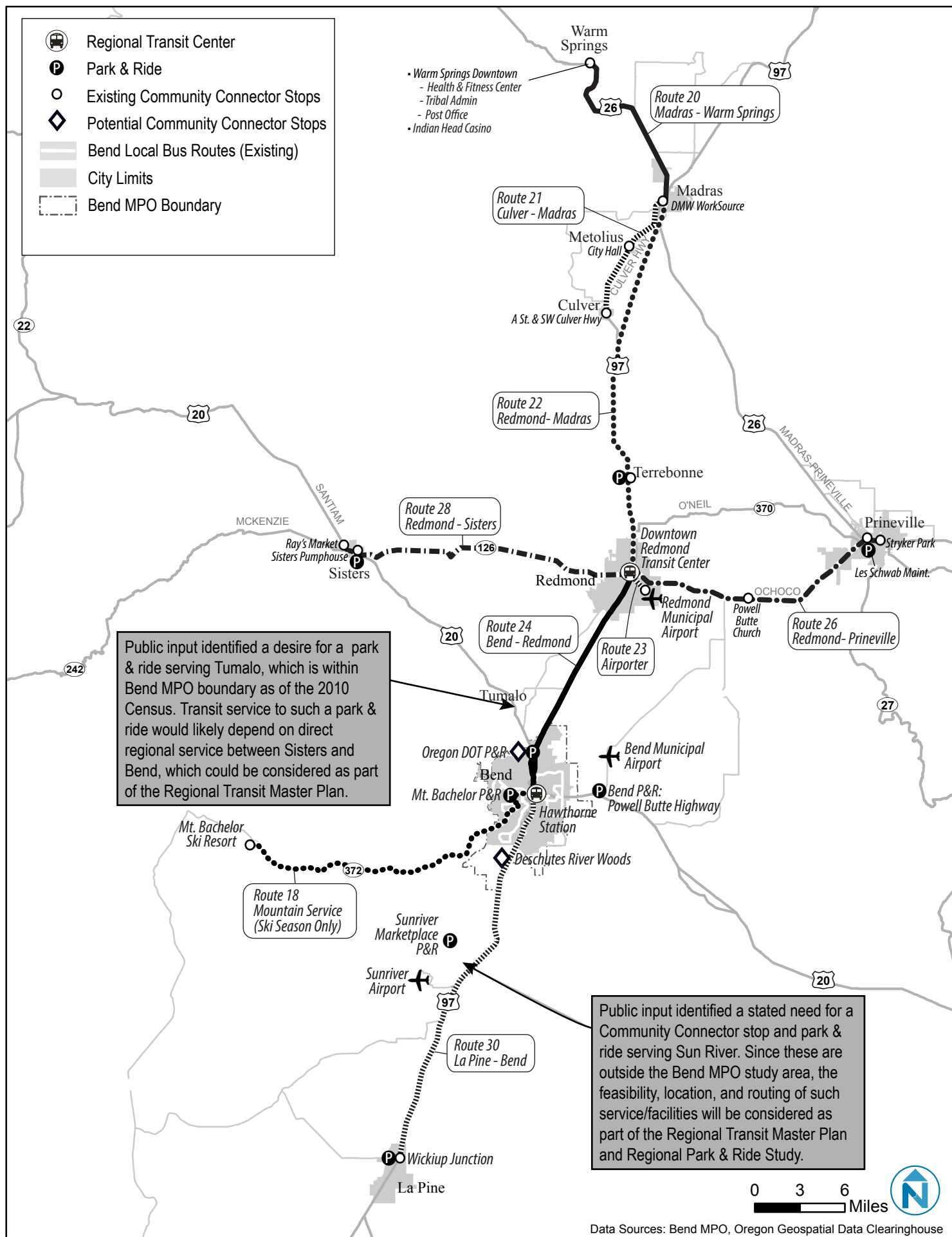
**Figure 7-16 Restructured 30/60-Minute Mid- to Long-Term Service Concept**



**Figure 8-2 Existing and Proposed Transit Facilities**

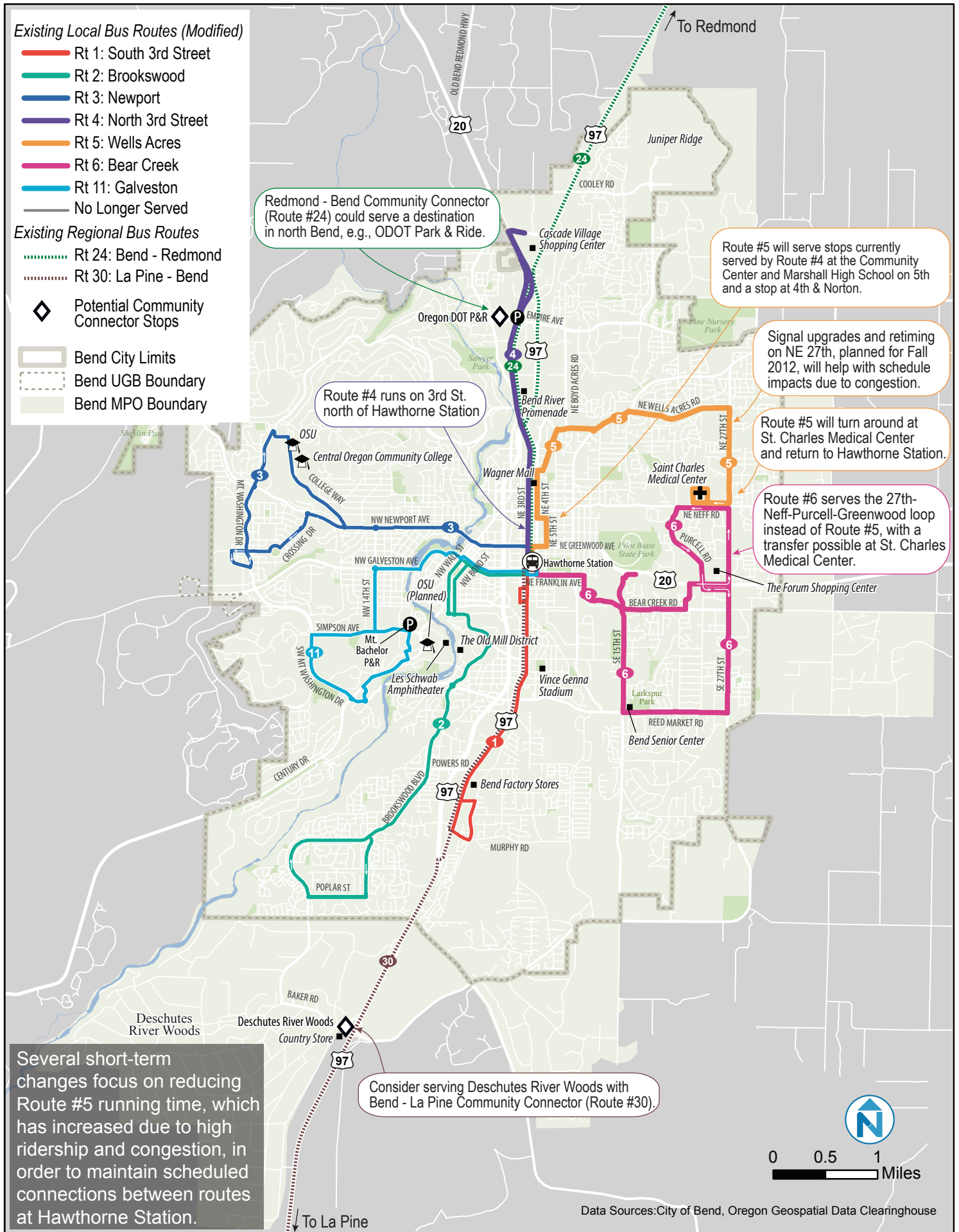


**Figure 8-3 Existing and Potential Regional Transit Facilities**





**Figure B-6 Short-Term Service Improvements (Option 1)**



**Figure B-7 Short-Term Service Improvements (Option 2) - Proposed in PTP**

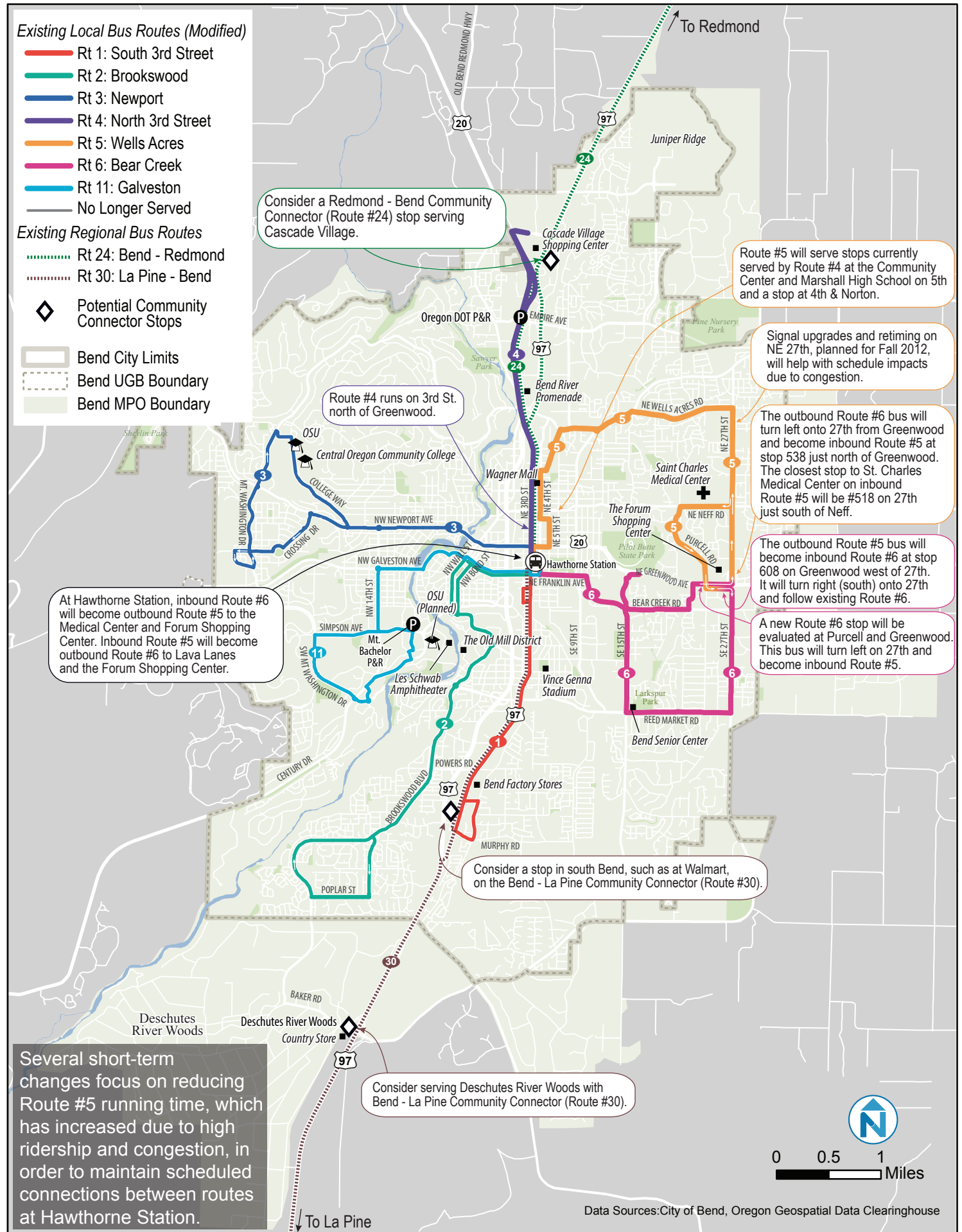


Figure B-13 Additional Conceptual Options

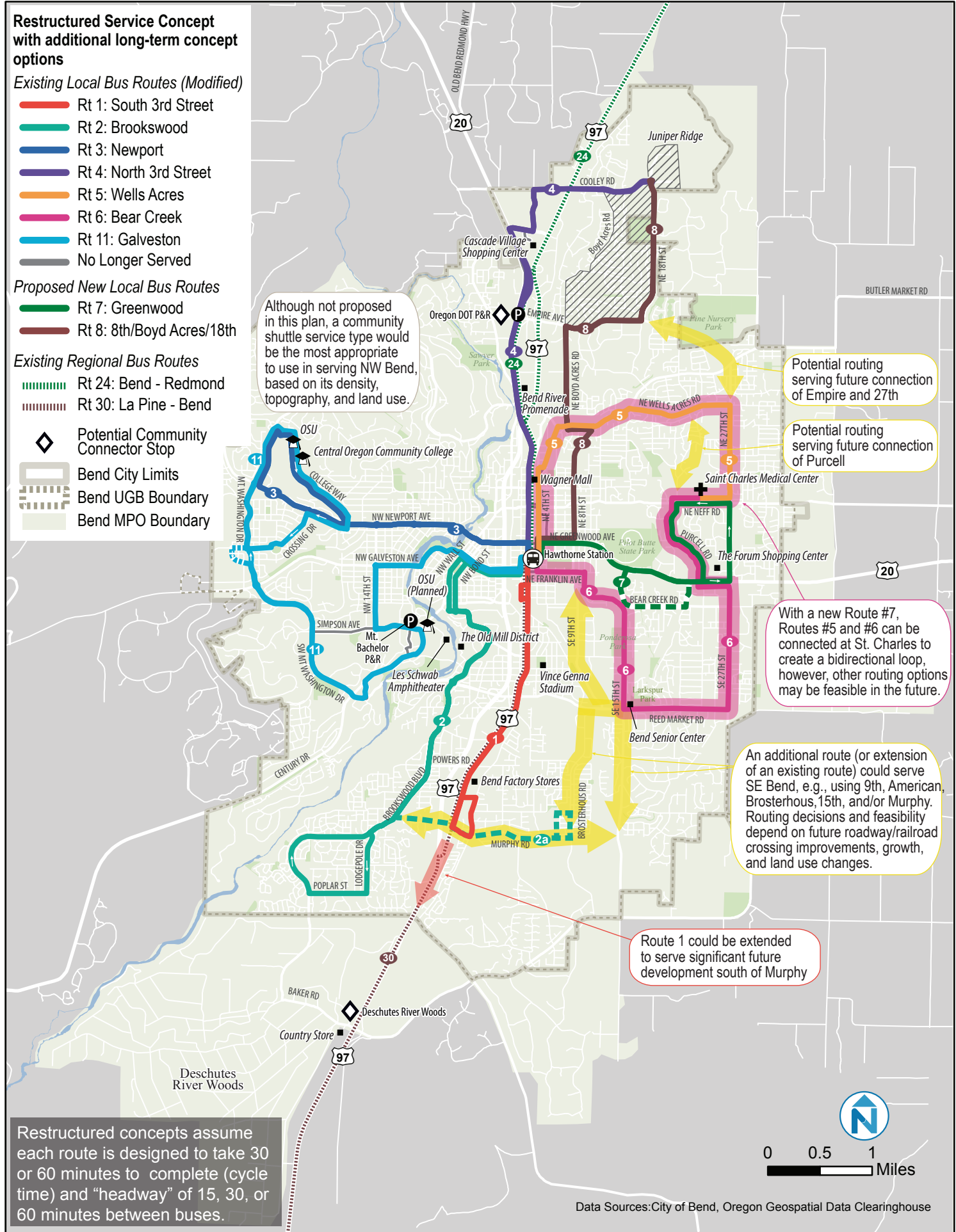
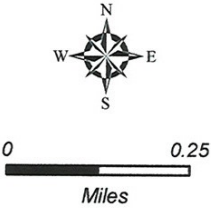
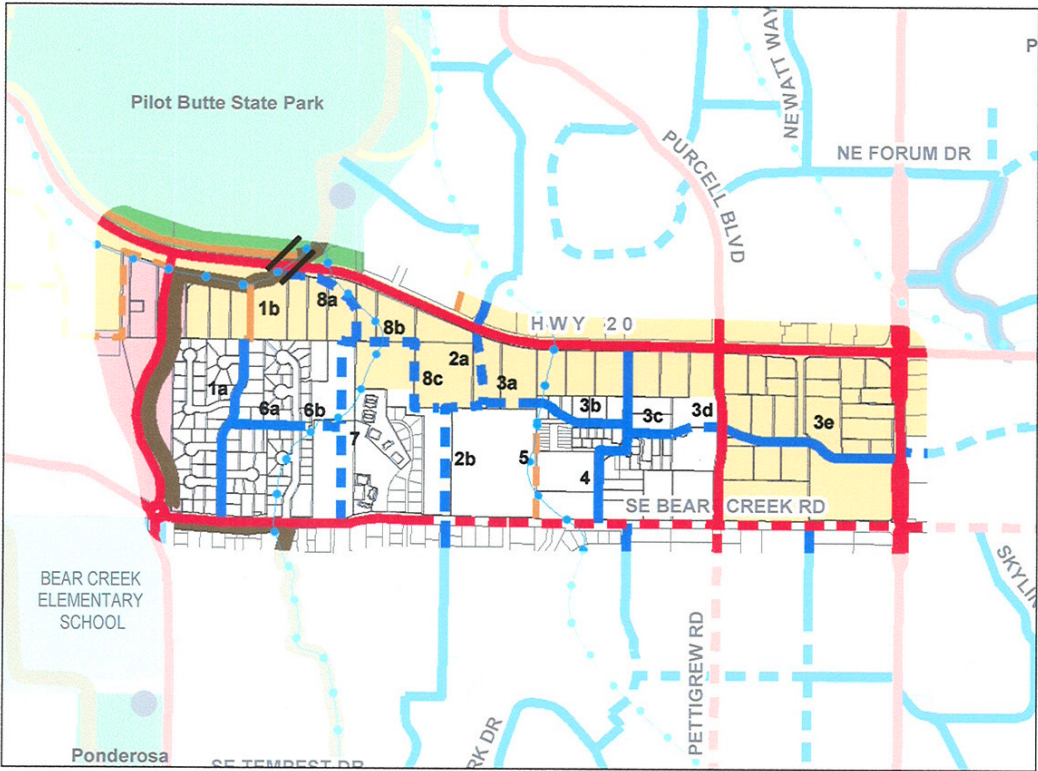




Figure B-16 TSP Accessways Map N-21 (for Greenwood Route)



D. Quinlan / neigh\_21.mxd

- |                                |                                    |                                    |
|--------------------------------|------------------------------------|------------------------------------|
| Urban Area Reserve             | Developed Parks                    | Existing bicycle lane              |
| City Boundary                  | Undeveloped Parks                  | Future bicycle lane                |
| River                          | Potential / Future Parks           | Existing shared roadway            |
| Canals                         | Existing trailhead                 | Future shared roadway              |
| Schools                        | Proposed trailhead                 | Existing multi-use path, Primary   |
| Commercial / Industrial Zoning | Railroad                           | Future multi-use path, Primary     |
| Public Ownership               | Proposed Rails with Trails         | Existing multi-use path, Connector |
| Golf course                    | Existing Bridge / Grade Separation | Future multi-use path, Connector   |
|                                | Proposed Bridge / Grade Separation | Forest Service Trails              |
|                                |                                    | Private Road                       |

J.T. ATKINS COMPANY PC

# Bend Urban Area Bicycle and Pedestrian System Plan

## Neighborhood 21

October 20, 2006

Figure D-1 Bend Urbanized Area Revised 2010 Census Boundary

