

United States Department of the Interior  
National Park Service

## National Register of Historic Places Registration Form

This form is for use in nominating or requesting determinations for individual properties and districts. See instructions in *How to Complete the National Register of Historic Places Registration Form* (National Register Bulletin 16A). Complete each item by marking "x" in the appropriate box or by entering the information requested. If an item does not apply to the property being documented, enter "N/A" for "not applicable." For functions, architectural classification, materials, and areas of significance, enter only categories and subcategories from the instructions. Place additional entries and narrative items on continuation sheets (NPS Form 10-900a). Use a typewriter, word processor, or computer, to complete all items.

### 1. Name of Property

historic name Bend Amateur Athletic Club

other names/site number Old Bend High School Gymnasium

### 2. Location

street & number 520 N.W. Wall Street (N.E. Corner, Wall Street/Idaho Ave) ☒ not for publication

city or town Bend ☐ vicinity

state Oregon code OR county Deschutes code 017 zip code 97709

### 3. State/Federal Agency Certification

As the designated authority under the National Historic Preservation Act, as amended, I hereby certify that this ☐ nomination ☐ request for determination of eligibility meets the documentation standards for registering properties in the National Register of Historic Places and meets the procedural and professional requirements set forth in 36 CFR Part 60. In my opinion, the property ☐ meets ☐ does not meet the National Register criteria. I recommend that this property be considered significant ☐ nationally ☐ statewide ☐ locally. (☐ See continuation sheet for additional comments.)

Signature of certifying official/Title

Date

State of Federal agency and bureau

In my opinion, the property ☐ meets ☐ does not meet the National Register criteria. (☐ See continuation sheet for additional comments.)

Signature of certifying official/Title

Date

State or Federal agency and bureau

### 4. National Park Service Certification

I hereby certify that the property is:

☐ entered in the National Register.  
☐ See continuation sheet.

☐ determined eligible for the  
National Register  
☐ See continuation sheet.

☐ determined not eligible for the  
National Register.

☐ removed from the National  
Register.

☐ other, (explain:)

Signature of the Keeper

Date of Action

Bend Amateur Athletic Club  
Name of Property

Deschutes, Oregon  
County and State

### 5. Classification

#### Ownership of Property

(Check as many boxes as apply)

- ☐ private  
☒ public-local  
☐ public-State  
☐ public-Federal

#### Category of Property

(Check only one box)

- ☒ building(s)  
☐ district  
☐ site  
☐ structure  
☐ object

#### Number of Resources within Property

(Do not include previously listed resources in the count.)

Contributing	Noncontributing
<u>1</u>	
	buildings
	sites
	structures
	objects
<u>1</u>	Total

#### Name of related multiple property listing

(Enter "N/A" if property is not part of a multiple property listing.)

Historic Development of the Bend

Company in Bend, Oregon

#### Number of contributing resources previously listed in the National Register

1

### 6. Function or Use

#### Historic Functions

(Enter categories from instructions)

Gymnasium/Auditorium

#### Current Functions

(Enter categories from instructions)

Vacant/Not In Use

### 7. Description

#### Architectural Classification

(Enter categories from instructions)

Neo-classical Revival

#### Materials

(Enter categories from instructions)

foundation Concrete-lava rock

walls Brick

roof Trussed, Asphalt shingles

other \_\_\_\_\_

#### Narrative Description

(Describe the historic and current condition of the property on one or more continuation sheets.)

Bend Amateur Athletic Club  
Name of Property

Deschutes, Oregon  
County and State

## 8. Statement of Significance

### Applicable National Register Criteria

(Mark "x" in one or more boxes for the criteria qualifying the property for National Register listing.)

- ☒ A Property is associated with events that have made a significant contribution to the broad patterns of our history.
- ☐ B Property is associated with the lives of persons significant in our past.
- ☒ C Property embodies the distinctive characteristics of a type, period, or method of construction or represents the work of a master, or possesses high artistic values, or represents a significant and distinguishable entity whose components lack individual distinction.
- ☐ D Property has yielded, or is likely to yield, information important in prehistory or history.

### Criteria Considerations

(Mark "x" in all the boxes that apply.)

Property is:

- ☐ A owned by a religious institution or used for religious purposes.
- ☐ B removed from its original location.
- ☐ C a birthplace or grave.
- ☐ D a cemetery.
- ☐ E a reconstructed building, object, or structure.
- ☐ F a commemorative property.
- ☐ G less than 50 years of age or achieved significance within the past 50 years.

### Narrative Statement of Significance

(Explain the significance of the property on one or more continuation sheets.)

## 9. Major Bibliographical References

### Bibliography

(Cite the books, articles, and other sources used in preparing this form on one or more continuation sheets.)

### Previous documentation on file (NPS):

- ☐ preliminary determination of individual listing (36 CFR 67) has been requested
- ☒ previously listed in the National Register
- ☐ previously determined eligible by the National Register
- ☐ designated a National Historic Landmark
- ☐ recorded by Historic American Buildings Survey  
# \_\_\_\_\_
- ☐ recorded by Historic American Engineering  
Record # \_\_\_\_\_

### Areas of Significance

(Enter categories from instructions)

Architecture

Recreation

### Period of Significance

(A) 1917-18

(C) 1917-18

### Significant Dates

(A) 1917-18

(C) 1917-18

### Significant Person

(Complete if Criterion B is marked above)

### Cultural Affiliation

N/A

### Architect/Builder

Thomas, Lee A., Architect

Wilson, Guy H., Builder

### Primary location of additional data:

- ☐ State Historic Preservation Office
- ☐ Other State agency
- ☐ Federal agency
- ☒ Local government
- ☐ University
- ☐ Other

Name of repository:

Bend Amateur Athletic Club  
Name of Property

Deschutes, Oregon  
County and State

## 10. Geographical Data

Acreage of Property \_\_\_\_\_

### UTM References

(Place additional UTM references on a continuation sheet.)

1	<div><div></div><div></div><div></div><div></div><div></div><div></div><div></div><div></div><div></div><div></div></div>	<div><div></div><div></div><div></div><div></div><div></div><div></div><div></div><div></div><div></div><div></div></div>	<div><div></div><div></div><div></div><div></div><div></div><div></div><div></div><div></div><div></div><div></div></div>
	Zone	Easting	Northing
2	<div><div></div><div></div><div></div><div></div><div></div><div></div><div></div><div></div><div></div><div></div></div>	<div><div></div><div></div><div></div><div></div><div></div><div></div><div></div><div></div><div></div><div></div></div>	<div><div></div><div></div><div></div><div></div><div></div><div></div><div></div><div></div><div></div><div></div></div>

3	<div><div></div><div></div><div></div><div></div><div></div><div></div><div></div><div></div><div></div><div></div></div>	<div><div></div><div></div><div></div><div></div><div></div><div></div><div></div><div></div><div></div><div></div></div>	<div><div></div><div></div><div></div><div></div><div></div><div></div><div></div><div></div><div></div><div></div></div>
	Zone	Easting	Northing
4	<div><div></div><div></div><div></div><div></div><div></div><div></div><div></div><div></div><div></div><div></div></div>	<div><div></div><div></div><div></div><div></div><div></div><div></div><div></div><div></div><div></div><div></div></div>	<div><div></div><div></div><div></div><div></div><div></div><div></div><div></div><div></div><div></div><div></div></div>

☐ See continuation sheet

### Verbal Boundary Description

(Describe the boundaries of the property on a continuation sheet.)

### Boundary Justification

(Explain why the boundaries were selected on a continuation sheet.)

## 11. Form Prepared By

name/title Michael Hall, Associate Planner: Historic and Cultural Resources (See continuation sheet)

organization Deschutes County Community Development Department date August 1, 1992

street & number 1130 N.W. Harriman telephone (503) 385-1704

city or town Bend state Oregon zip code 97701

### Additional Documentation

Submit the following items with the completed form:

#### Continuation Sheets

#### Maps

A USGS map (7.5 or 15 minute series) indicating the property's location.

A Sketch map for historic districts and properties having large acreage or numerous resources.

#### Photographs

Representative black and white photographs of the property.

#### Additional items

(Check with the SHPO or FPO for any additional items)

### Property Owner

(Complete this item at the request of SHPO or FPO.)

name Bend-LaPine School District

street & number 520 N.W. Wall Street telephone 385-5212

city or town Bend state OR zip code 97709

**Paperwork Reduction Act Statement:** This information is being collected for applications to the National Register of Historic Places to nominate properties for listing or determine eligibility for listing, to list properties, and to amend existing listings. Response to this request is required to obtain a benefit in accordance with the National Historic Preservation Act, as amended (16 U.S.C. 470 et seq.).

**Estimated Burden Statement:** Public reporting burden for this form is estimated to average 18.1 hours per response including time for reviewing instructions, gathering and maintaining data, and completing and reviewing the form. Direct comments regarding this burden estimate or any aspect of this form to the Chief, Administrative Services Division, National Park Service, P.O. Box 37127, Washington, DC 20013-7127; and the Office of Management and Budget, Paperwork Reductions Projects (1024-0018), Washington, DC 20503.

United States Department of the Interior  
National Park ServiceNational Register of Historic Places  
Continuation SheetSection number 7 Page 1

The building is 62' high at entrance. Decorative concrete plaques in pairs at all corners represent Native American athletes. Main entrance on second floor is gained through brick and concrete staircases north and south. Clerestory windows on south wall provided light, as well as windows at the pool level on north side (since bricked over). The architecture has some elements of neo-classicism, but the building is austere; although there are some classical details in the symmetrical front entrance, the modern adaptation of classic reflects a western form typical of 1920's. Construction began in April, 1917, with the purchase of 300,000 local brick from the brick company yard west of town at \$10.00 a thousand. Completed in March, 1918, the structure was a credit to Lee A. Thomas, the architect; to Guy H. Wilson, construction superintendent; to business leaders and mill employees. The original building, three stories (four levels) is a rectangle 70' by 114'; it has a concrete-lava rock foundation, a brick masonry bearing wall two bricks thick, a trussed roof. The original roof covering is indeterminate; the present roof is covered with asphalt shingles. The structure sits in downtown Bend (nw¼, nw¼, Sec. 32, T17S, R12E, W. meridian); Block 23, Bend Park Addition (see attached). The building faces west on Wall Street. Just north is the old Bend High School complex, now headquarters for the school district. Directly across Wall is the Deschutes County Library building; due south is Reid School, now headquarters for the Deschutes County Historical Society. Nearby are historic churches and another elementary school.

During World War I the small community of Bend raised over \$138,000 in drives related to the war effort. They did something else of note: they built in 1917-18 the Bend Amateur Athletic Club gymnasium at a cost of \$50,000 more. That structure was designed to serve the more than 500 members of the organization and the community need for a recreation-cultural center as well. Internal spatial organization included, originally, an auditorium with fully equipped stage, hardwood playing floor. Two suspended balconies provided seating for 350 people each, with a total seating of 1200. On either side of main entrance were offices, ticket booths, with a ladies' restroom in one. On second floor was the main club room -- lounge, and library, with lava rock fireplace at each end. There were wood corner window seats. The east end of the room opened toward the main gym, with balcony, for motion picture projection and theatrical flood lights. On each side of the stage, with entrance from balconies, were reading rooms for mill employees. On third floor front, reached by a small spiral staircase, was a wrestling room, heavily padded. In the basement were accommodations for caretaker, a bowling alley, a billiard room, a towel room, showers, 600 lockers, a swimming pool 20' by 60' (8' deep to 3'), and seats for 100 spectators. The main floor's basic color scheme was black and red. Gothic molding, knee braces on ceiling, added to sturdy interior appearance. Decorative Indian head plaques were placed on the proscenium arch, Bend Amateur Athletic Club insignia to right and left.

United States Department of the Interior  
National Park ServiceNational Register of Historic Places  
Continuation SheetSection number 8 Page 1

As early as 1910 the village of Bend was exhibiting an intensity of effort to develop its potential, that had no rival in Crook County. Some of the energy stemmed from the infusion into the community life stream of wealthy, young easterners like William D. Cheney and George Palmer Putnam. The rails (1911) and the great sawmills (1916) further increased the communal sense that cooperative effort "boosting" Bend would benefit everyone. One significant illustration of the strength of this drive occurred in 1917 when the Bend Amateur Athletic Club community center gymnasium was begun. The funds (finally totaling \$50,000) were raised by public subscription, not tax money, from many sources--business men, mill executives and employees. In addition, donations of labor were frequent. Memberships in the association were open to both men and women. Percy A. Stevens, after whom Bend's first American Legion Post was named, was one of the members. He died when the Tuscania was torpedoed off the Irish coast, February 7, 1918. Before the building was opened to the public it served Bend as auxiliary hospital during the influenza epidemic of 1918. Forty cots were set up on the main floor. May 30, 1919, the building was formally open for public use. Athletic contests were held there, public dances. Billy Sunday spoke there May 3, 1919, in behalf of the last Victory Loan Drive. In September, 1919, Bend's Commercial Club endorsed a drive to clear \$35,000 debt--first subscription of \$250.00 coming from the Bend Elks. A total of \$39,000 was finally raised, with Shevlin-Hixon contributing \$15,590 and Brooks-Scanlon \$13,650. Even architect Lee Thomas donated \$300.00. Bend schools were authorized to use the gymnasium for physical training and basketball practices in 1919. In November, the indebtedness being removed, the building was turned over to the YMCA. Percy Stevens American Legion Post uses, and others, indicate general community involvement. Uses of the building by the YMCA, the American Legion, Boy Scouts, Library Association, Bend Women's Civic Club, Lyceum, Chautauqua, besides the general public, are too numerous to detail. In June, 1921, the building title went to the American Legion. Then in March, 1923, the building was turned over to Bend School District No. 1 which retains ownership today. Before the proposed Bend High School was built, the acquisition of this building determined the location of that school.

In 1938-39 the school district added an enlarged heating plant to the original structure, using salvaged bricks from the old Central School. A WPA project, the enlarged plant heated the high school, and in time both Reid and Thompson elementary schools through heat tunnels. The interior has been repainted one color by the school district. Some internal bracing has been added to stage and entrance end. In 1952 the building was partially remodeled by the school district and the bowling alley and caretaker's apartment removed. Present deterioration of stairways, wiring, plumbing and roof cover has caused review by State Fire Marshal. Renovation will require significant effort and expenditure, yet most original features remain.

United States Department of the Interior  
National Park Service

# National Register of Historic Places Continuation Sheet

Section number 9 Page 1

## BIBLIOGRAPHY — BEND AMATEUR ATHLETIC CLUB

### The Bend Bulletin:

March 10, 1917, 4:4.	June 30, 1921, 7:5.
March 14, 1917, 1:4.	Mar. 15, 1923, 2:3.
March 16, 1917, 1:2.	Aug. 31, 1923, 1:3.
March 17, 1917, 1:2.	Mar. 23, 1925, 4:1-2.
March 19, 1917, 1:2.	Mar. 24, 1925, 4:1-2.
March 21, 1917, 1:2; 4:4-6.	Mar. 28, 1925, 4:1-2.
March 23, 1917, 1:4.	
March 27, 1917, 1:5.	
March 31, 1917, 1:5.	
April 2, 1917, 1:4.	
April 3, 1917, 1:6.	
April 6, 1917, 6:1.	
April 9, 1917, 1:5.	
April 14, 1917, 1:4.	
April 19, 1917, 1:4.	
May 3, 1917, 1:4.	
May 5, 1917, 1:5.	
May 9, 1917, 1:5.	
May 10, 1917, 3:4.	
May 11, 1917, 1:4.	
May 14, 1917, 1:6.	
May 17, 1917, 1:2.	
June 27, 1917, 2:1.	
Aug. 23, 1917, 2:1.	
Sept. 8, 1917, 1:5.	
Oct. 11, 1917, 1:1.	
Nov. 20, 1917, 1:2.	
Nov. 30, 1917, 3:4.	
Feb. 12, 1918, 2:1.	
Feb. 13, 1918, 1:1.	
March 8, 1918, 1:6; 2:3-4.	
April 12, 1918, 2:3.	
April 22, 1918, 1:2.	
April 23, 1918, 1:4; 2:3.	
April 24, 1918, 1:2.	
Sept. 25, 1919, 1:1.	
Oct. 9, 1919, 8:5.	
Oct. 16, 1919, 15:3.	
Oct. 30, 1919, 8:1.	
Nov. 6, 1919, 1:5.	
Nov. 13, 1919, 1:6.	
Nov. 20, 1919, 1:4.	
Dec. 11, 1919, 3:1-2.	
March 10, 1921, 1:4.	
June 23, 1921, 8:2.	

United States Department of the Interior  
National Park Service

## National Register of Historic Places Continuation Sheet

Section number 10 Page 1

---

### Verbal Boundary Description

The following described portion of Block twenty-three (23) of Park Addition to Bend, Oregon: Beginning at the westerly corner of said Block 23, at the intersection of Wall Street and Idaho Avenue; thence North 38 degrees 34' East for 75 feet along the southeasterly side of Wall Street; thence South 51 degrees 26' East for 140 feet; thence South 38 degrees 34' West for 75 feet to the northeasterly line of Idaho Avenue; thence North 51 degrees 26' West for 140 feet to the point of beginning. T.17s, R.12e, s.32 (CA), Portion of Tax lot 8600.

### Boundary Justification

The boundary encompasses but does not exceed the full extent of the resource; the boundary is the historic boundary dating back to 1917.



United States Department of the Interior  
National Park Service

## National Register of Historic Places Continuation Sheet

Section number 11 Page 1

---

The property was listed in the National Register of Historic Places November 25, 1983.  
The original nomination was prepared by Keith Clark; 541 S. 14th Street; Redmond,  
Oregon; 97756. The information submitted on current form is from Mr. Clark's original .

United States Department of the Interior  
National Park Service

# National Register of Historic Places Continuation Sheet

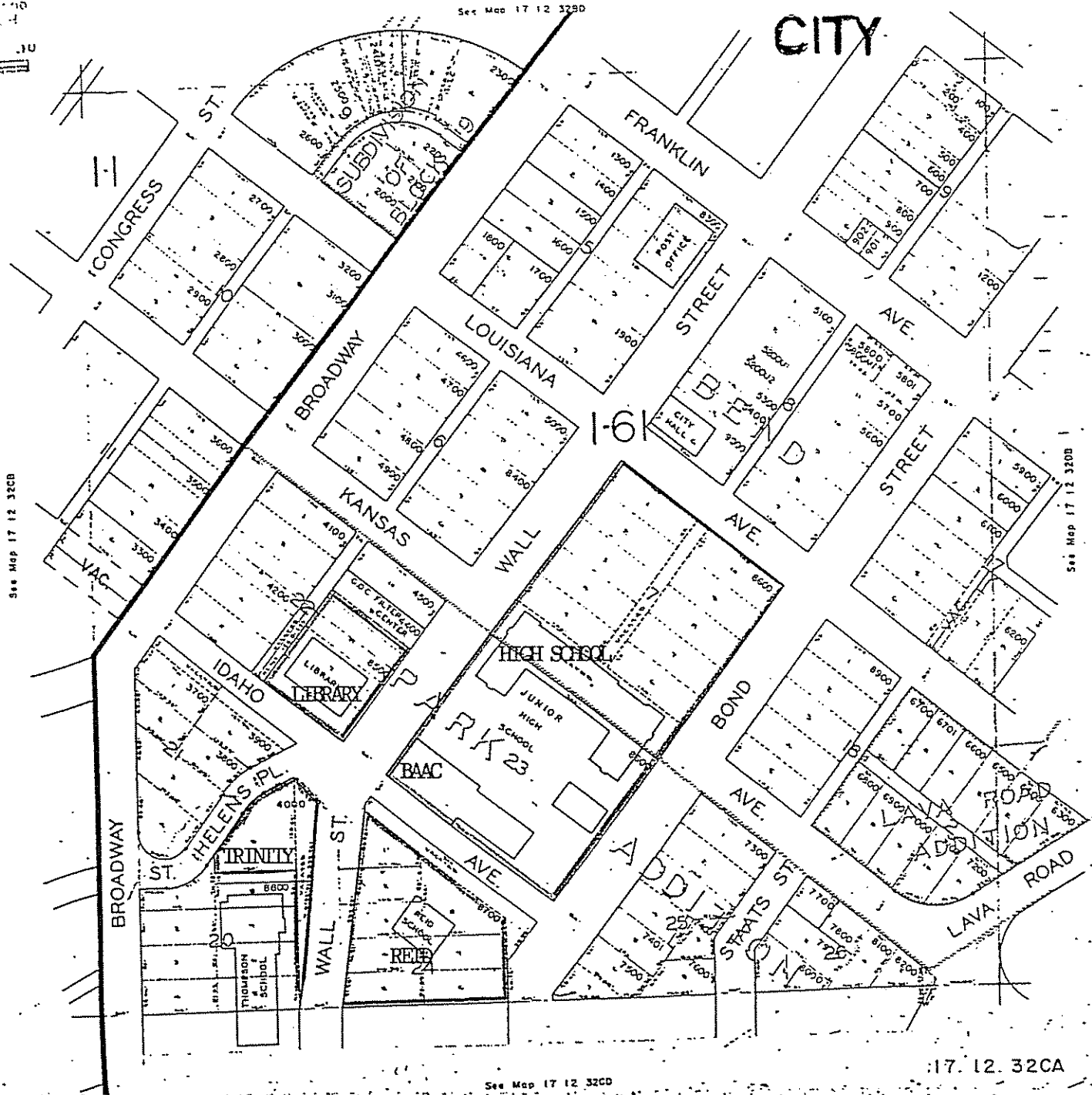
Section number \_\_\_\_\_ Page \_\_\_\_\_

---

ADDITIONAL DOCUMENTATION

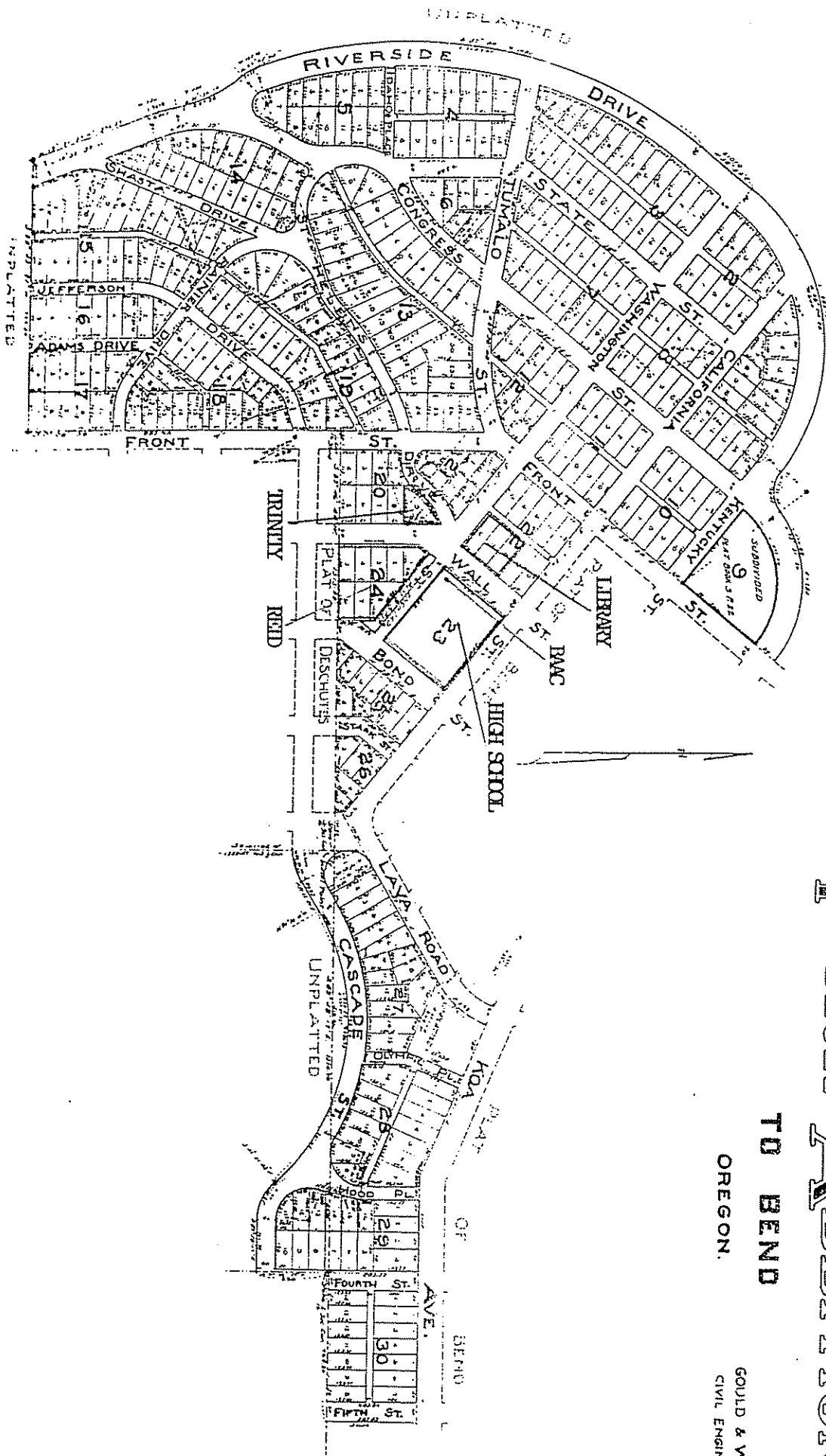
See Map 17 12 32BD

CITY



See Map 17 12 32CD

17. 12. 32CA



# PARK ADDITION

TO BEND

OREGON.

GOULD & WARD  
CIVIL ENGINEERS.

United States Department of the Interior  
Heritage Conservation and Recreation Service

For HCRS use only

**National Register of Historic Places  
Inventory—Nomination Form**

received

date entered

See instructions in *How to Complete National Register Forms*  
Type all entries—complete applicable sections

## 1. Name

historic Bend Amateur Athletic Club Gymnasium

and/or common Old Bend High School Gym

## 2. Location

street & number N. E. Corner, Wall and Idaho Streets not for publication

city, town Bend vicinity of 2nd congressional district

state Oregon code \_\_\_\_\_ county Deschutes code \_\_\_\_\_

## 3. Classification

<b>Category</b>	<b>Ownership</b>	<b>Status</b>	<b>Present Use</b>	
<input type="checkbox"/> district	<input checked="" type="checkbox"/> public	<input type="checkbox"/> occupied	<input type="checkbox"/> agriculture	<input type="checkbox"/> museum
<input checked="" type="checkbox"/> building(s)	<input type="checkbox"/> private	<input checked="" type="checkbox"/> unoccupied	<input type="checkbox"/> commercial	<input type="checkbox"/> park
<input type="checkbox"/> structure	<input type="checkbox"/> both	<input type="checkbox"/> work in progress	<input checked="" type="checkbox"/> educational	<input type="checkbox"/> private residence
<input type="checkbox"/> site	<b>Public Acquisition</b>	<b>Accessible</b>	<input type="checkbox"/> entertainment	<input type="checkbox"/> religious
<input type="checkbox"/> object	<input type="checkbox"/> in process	<input checked="" type="checkbox"/> yes: restricted	<input type="checkbox"/> government	<input type="checkbox"/> scientific
	<input type="checkbox"/> being considered	<input type="checkbox"/> yes: unrestricted	<input type="checkbox"/> industrial	<input type="checkbox"/> transportation
		<input type="checkbox"/> no	<input type="checkbox"/> military	<input type="checkbox"/> other:

## 4. Owner of Property

name Bend School District #1

street & number 547 Wall Street

city, town Bend, Oregon vicinity of \_\_\_\_\_ state Oregon

## 5. Location of Legal Description

courthouse, registry of deeds, etc. Deschutes County Court House

street & number 1164 Bond Street

city, town Bend state Oregon

## 6. Representation in Existing Surveys

title \_\_\_\_\_ has this property been determined eligible? ☐ yes ☐ no

date \_\_\_\_\_ federal ☐ state ☐ county ☐ local ☐

depository for survey records \_\_\_\_\_

city, town \_\_\_\_\_ state \_\_\_\_\_

## 9. Major Bibliographical References

The Bend Bulletin, March 1917 - March 1925. See attached sheet.

W. W. Woodbeck, Directory of Crook, Deschutes, and Jefferson Counties, Vol. 1, 1917; p. 6.

## 10. Geographical Data

Acreage of nominated property \_\_\_\_\_

Quadrangle name \_\_\_\_\_

Quadrangle scale \_\_\_\_\_

UMT References

A 

--	--	--	--	--	--	--	--	--	--

  
Zone Easting Northing

B 

--	--	--	--	--	--	--	--	--	--

  
Zone Easting Northing

C 

--	--	--	--	--	--	--	--	--	--

D 

--	--	--	--	--	--	--	--	--	--

E 

--	--	--	--	--	--	--	--	--	--

F 

--	--	--	--	--	--	--	--	--	--

G 

--	--	--	--	--	--	--	--	--	--

H 

--	--	--	--	--	--	--	--	--	--

Verbal boundary description and justification

List all states and counties for properties overlapping state or county boundaries

state \_\_\_\_\_ code \_\_\_\_\_ county \_\_\_\_\_ code \_\_\_\_\_

state \_\_\_\_\_ code \_\_\_\_\_ county \_\_\_\_\_ code \_\_\_\_\_

## 11. Form Prepared By

name/title Keith Clark, Researcher

organization \_\_\_\_\_

date March 18, 1983

street & number 541 S. 14th St.

telephone 548-2075

city or town Redmond

state Oregon

## 12. State Historic Preservation Officer Certification

The evaluated significance of this property within the state is:

\_\_\_\_ national \_\_\_\_ state \_\_\_\_ local

As the designated State Historic Preservation Officer for the National Historic Preservation Act of 1966 (Public Law 89-665), I hereby nominate this property for inclusion in the National Register and certify that it has been evaluated according to the criteria and procedures set forth by the Heritage Conservation and Recreation Service.

State Historic Preservation Officer signature \_\_\_\_\_

title \_\_\_\_\_

date \_\_\_\_\_

For HCRA use only

I hereby certify that this property is included in the National Register

date \_\_\_\_\_

Keeper of the National Register

Attest:

date \_\_\_\_\_

Chief of Registration

NPS Form 10-900  
(Oct. 1990)

OMB No. 10024-0018

United States Department of the Interior  
National Park ServiceNational Register of Historic Places  
Registration Form

This form is for use in nominating or requesting determinations for individual properties and districts. See instructions in *How to Complete the National Register of Historic Places Registration Form* (National Register Bulletin 16A). Complete each item by marking "X" in the appropriate box or by entering the information requested. If an item does not apply to the property being documented, enter "N/A" for "not applicable." For functions, architectural classification, materials, and areas of significance, enter only categories and subcategories from the instructions. Place additional entries and narrative items on continuation sheets (NPS Form 10-900a). Use a typewriter, word processor, or computer, to complete all items.

**1. Name of Property**historic name Bend Amateur Athletic Clubother names/site number Old Bend High School Gymnasium**2. Location**street & number 520 NW Wall Street (NE corner Wall St. and Idaho Ave.) N/A not for publicationcity or town Bend N/A vicinitystate Oregon code OR county Deschutes code 017 zip code 97709**3. State/Federal Agency Certification**

As the designated authority under the National Historic Preservation Act, as amended, I hereby certify that this ☒ nomination ☐ request for determination of eligibility meets the documentation standards for registering properties in the National Register of Historic Places and meets the procedural and professional requirements set forth in 36 CFR Part 60. In my opinion, the property ☒ meets ☐ does not meet the National Register criteria. I recommend that this property be considered significant ☐ nationally ☐ statewide ☒ locally. (☐ See continuation sheet for additional comments.)

James H. Smith 7/23/93  
Signature of certifying official/Title Deputy SHPO Date

Oregon State Historic Preservation Office  
State or Federal agency and bureau

In my opinion, the property ☐ meets ☐ does not meet the National Register criteria. (☐ See continuation sheet for additional comments.)

\_\_\_\_\_  
Signature of certifying official/Title Date

\_\_\_\_\_  
State or Federal agency and bureau

**4. National Park Service Certification**

I hereby certify that the property is:

Signature of the Keeper

Date of Action

☐ entered in the National Register.  
☐ See continuation sheet.

☐ determined eligible for the  
National Register  
☐ See continuation sheet.

☐ determined not eligible for the  
National Register.

☐ removed from the National  
Register.

☐ other, (explain): \_\_\_\_\_

Bend Amateur Athletic Club  
Name of Property

Deschutes, Oregon  
County and State

**5. Classification**

**Ownership of Property**  
(Check as many boxes as apply)

- ☐ private  
☒ public-local  
☐ public-State  
☐ public-Federal

**Category of Property**  
(Check only one box)

- ☒ building(s)  
☐ district  
☐ site  
☐ structure  
☐ object

**Number of Resources within Property**  
(Do not include previously listed resources in the count.)

Contributing	Noncontributing
<u>1</u>	
	buildings
	sites
	structures
	objects
<u>1</u>	Total

**Name of related multiple property listing**  
(Enter "N/A" if property is not part of a multiple property listing.)

Historic Development of The Bend  
Company in Bend, Oregon

**Number of contributing resources previously listed**  
**in the National Register**

1

**6. Function or Use**

**Historic Functions**

(Enter categories from instructions)

Gymnasium/Auditorium

**Current Functions**

(Enter categories from instructions)

Vacant/Not In Use

Maintenance office (rear portion)

**7. Description**

**Architectural Classification**

(Enter categories from instructions)

Jacobean/Jugendstil

**Materials**

(Enter categories from instructions)

foundation tuff (volcanic rock)

walls brick

roof asphalt (composition shingles)

other \_\_\_\_\_

**Narrative Description**

(Describe the historic and current condition of the property on one or more continuation sheets.)



Dend Amateur Athletic Club  
Name of Property

Deschutes, Oregon  
County and State

### 8. Statement of Significance

#### Applicable National Register Criteria

(Mark "x" in one or more boxes for the criteria qualifying the property for National Register listing.)

- ☒ A Property is associated with events that have made a significant contribution to the broad patterns of our history.
- ☐ B Property is associated with the lives of persons significant in our past.
- ☒ C Property embodies the distinctive characteristics of a type, period, or method of construction or represents the work of a master, or possesses high artistic values, or represents a significant and distinguishable entity whose components lack individual distinction.
- ☐ D Property has yielded, or is likely to yield, information important in prehistory or history.

#### Criteria Considerations

(Mark "x" in all the boxes that apply.)

Property is:

- ☐ A owned by a religious institution or used for religious purposes.
- ☐ B removed from its original location.
- ☐ C a birthplace or grave.
- ☐ D a cemetery.
- ☐ E a reconstructed building, object, or structure.
- ☐ F a commemorative property.
- ☐ G less than 50 years of age or achieved significance within the past 50 years.

#### Areas of Significance

(Enter categories from instructions)

Architecture

Community Planning and Development

#### Period of Significance

1917-1918

#### Significant Dates

1918

#### Significant Person

(Complete if Criterion B is marked above)

N/A

#### Cultural Affiliation

N/A

#### Architect/Builder

Thomas, Lee A., Architect

Wilson, Guy H., Builder

#### Narrative Statement of Significance

(Explain the significance of the property on one or more continuation sheets.)

### 9. Major Bibliographical References

#### Bibliography

(Cite the books, articles, and other sources used in preparing this form on one or more continuation sheets.)

#### Previous documentation on file (NPS):

- ☐ preliminary determination of individual listing (36 CFR 67) has been requested
- ☒ previously listed in the National Register
- ☐ previously determined eligible by the National Register
- ☐ designated a National Historic Landmark
- ☐ recorded by Historic American Buildings Survey  
# \_\_\_\_\_
- ☐ recorded by Historic American Engineering Record # \_\_\_\_\_

#### Primary location of additional data:

- ☐ State Historic Preservation Office
- ☐ Other State agency
- ☐ Federal agency
- ☐ Local government
- ☐ University
- ☒ Other

Name of repository:

Deschutes Historical Center

Bend Amateur Athletic Club  
Name of Property

Deschutes, Oregon  
County and State

# 10. Geographical Data

Acreage of Property 0.69 acres

Bend, Oregon 1:24000

## UTM References

(Place additional UTM references on a continuation sheet.)

1 10 6349210 48792610  
Zone Easting Northing  
2                                    

3                                      
Zone Easting Northing  
4                                      
☐ See continuation sheet

## Verbal Boundary Description

(Describe the boundaries of the property on a continuation sheet.)

## Boundary Justification

(Explain why the boundaries were selected on a continuation sheet.)

# 11. Form Prepared By

name/title Keith Clark/OSHEO; Michael Hall

organization Deschutes County Historical Society date March 1983; August 1992

street & number 129 NW Idaho Avenue telephone (503) 389-1813

city or town Bend state Oregon zip code 97701

## Additional Documentation

Submit the following items with the completed form:

## Continuation Sheets

## Maps

A USGS map (7.5 or 15 minute series) indicating the property's location.

A Sketch map for historic districts and properties having large acreage or numerous resources.

## Photographs

Representative black and white photographs of the property.

## Additional Items

(Check with the SHPO or FPO for any additional items)

## Property Owner

(Complete this item at the request of SHPO or FPO.)

name Bend-LaPine School District

street & number 520 NW Wall Street telephone (503) 383-6005

city or town Bend state Oregon zip code 97709

**Paperwork Reduction Act Statement:** This information is being collected for applications to the National Register of Historic Places to nominate properties for listing or determine eligibility for listing, to list properties, and to amend existing listings. Response to this request is required to obtain a benefit in accordance with the National Historic Preservation Act, as amended (16 U.S.C. 470 et seq.).

**Estimated Burden Statement:** Public reporting burden for this form is estimated to average 18.1 hours per response including time for reviewing instructions, gathering and maintaining data, and completing and reviewing the form. Direct comments regarding this burden estimate or any aspect of this form to the Chief, Administrative Services Division, National Park Service, P.O. Box 37127, Washington, DC 20013-7127; and the Office of Management and Budget, Paperwork Reductions Projects (1024-0018), Washington, DC 20503.

United States Department of the Interior  
National Park Service

National Register of Historic Places  
Continuation Sheet

Section number 7 Page 1

The Bend Amateur Athletic Club Gymnasium occupies the southwesterly 100 feet of Block 23 of the Park Addition to Bend, the county seat of Deschutes County, Oregon. Completed and opened for use in March, 1918, the three-story building is rectangular in plan, measuring in its main volume 70 x 114 feet. Wall construction is of brick masonry on tuff foundation with concrete mortar. The building is oriented southeasterly to north-easterly, its main entrance fronting Wall Street. It is part of a concentration of civic, or educational buildings arrayed along Wall Street which includes the Reid School of 1914, on the south, old Bend High School (1925) to the north, and the Deschutes County Library across Wall Street to the west. Reid School, constructed of tuff, is presently occupied by the Deschutes County Historical Society. The old Bend High School building is now headquarters of the Bend School District.

The building was designed by Portland architect Lee A. Thomas, who was at the time practicing independently. In its curvilinear gables and English bond brickwork accented by bandings of patterned brick, the gymnasium is Jacobean in style. However, its Indian athlete plaques and austere facade with inset, polygonal central entrance bay are touches of Arts and Crafts architecture influenced by the European New Art movement; examples of which are rare in Oregon. In addition to its stylistic distinction, the building is interesting because of its unusual roof framing system composed of clear-span, bowstring-type timber trusses with steel tension bar reinforcement. The lower chords of the trusses are arched.

The gymnasium rests on a high basement which originally contained a 20 x 60 foot swimming tank, now filled in; a shower and locker room, billiards room, bowling alley and caretaker's quarters. The main story contains the gymnasium-auditorium with its proscenium stage at the east end and two suspended balconies on either side. The partial second story at the west, or entrance end historically contained a lounge-library with chimney pieces of tuff, or native volcanic rock, and the third story, an attic, contained the wrestling room. Interior finish work is straightforward except for the clubroom chimney pieces, just mentioned, and the flat proscenium arch which is trimmed with Indian head bas relief plaques and masques pendant from escutcheons bearing the initials of the Bend Amateur Athletic Club.

The main floor, or gymnasium-auditorium, has a fully-equipped stage and hardwood playing floor. The basic color scheme of the main floor was black and red, initially. The interior has since been repainted. The two suspended balconies provided seating for 350 people each, for a total seating capacity of 1200. On either side of main entrance were offices, ticket booths, with a ladies' restroom in one. On second floor, in the main clubroom with the lava rock fireplaces at each end, there were wood corner window seats. The east end of the clubroom opened toward the main gym and had a balcony for motion picture projection and theatrical flood lights. On either side of the stage, at the opposite end of the building, were reading rooms for mill employees reached from the suspended balconies. On the third floor front, reached by a small spiral staircase, was a wrestling room, heavily padded. In the basement, as has been mentioned, were accommodations for caretaker, a bowling alley, a billiards room, a towel room, showers, 600 lockers, a swimming pool 20 x 60 feet (8' deep to 3'), and seats for 100 spectators.

The roof of the gymnasium, now covered with composition shingles, is a gable roof with its ridge following the direction of the main axis. At either end of the main volume are bold, curved triangular gables with plain coping of cast stone or terra cotta. Lateral gable roof sections run at right angles to the longitudinal gable ridge at east and west ends. Parapet gables of the side elevations are curvilinear in the Jacobean style.

United States Department of the Interior  
National Park Service

National Register of Historic Places  
Continuation Sheet

Section number 7 Page 2

At the base of the valleys of the intersecting gables are rain spouts of cast stone or terra cotta and ornamental bas relief panels trimmed with a cornice and oak leaf motifs. The major panels contain the crouching figures of Native American athletes at the commencement of a foot race.

The principal, or west facade has a tripartite organization in which a central, two-story, polygonal entrance bay is inset from the main wall plane underneath a concrete bond beam. Main story and second story windows in the outer bays are stacked in elongated inset panels. Typical windows of this facade are multi-paned casement windows. The entrance is approached by a grand staircase composed of stairs at either end turning in dog-leg fashion to a double ramp paralleling the facade. A round-arched portal centered in the base of the staircase gives access to the basement level. Above the random-range tuff foundation, which provides contrast to the brick masonry, is a high base course of patterned brick, the top of which is articulated by several courses of vertically-laid stretcher bricks. The main body of the building is finished in English bond, without embellishment at the corners. The third story, or attic is ventilated by frameless slit windows in the gable ends. Side elevations are generally plain, with fenestration essentially limited to a range of small multi-paned windows at the basement level and industrial-type clerestory windows at the top of the wall, lighting the gymnasium.

At the east end of the building is a straightforward, two-story heating plant wing measuring approximately 48 x 100 feet which was telescoped from the rear wall as a WPA project in 1938-1939. This addition is essentially unarticulated but continues the exterior finish treatment of brick (in this case brick salvaged from the old Central School). A tall, square stack venting the heating plant is located at the juncture of the two volumes. Through a tunnel system, this heating plant was developed to serve not only old Bend High School, which occupies the northerly portion of Block 23 and part of an adjacent block, but the nearby Reid and Thompson Elementary Schools as well.

In 1952 the gymnasium was renovated by the School District, with the result that the basement bowling alley and caretaker's quarters were eliminated. The swimming tank was filled in, presumably at an earlier date. Some internal bracing has been added to the main floor. In all other respects the gymnasium, its distinguishing features and stylistic characteristics, are intact and fully evident. Stairways, wiring, plumbing are in need of upgrading, and the roof requires repair. The building is otherwise sound and a likely candidate for adaptive use rehabilitation.

The building's boiler serves as the heating source for the former Bend High School, which stands partly on the same block, Block 23, and is now occupied as administrative headquarters for the Bend-LaPine School District. In March, 1993, the School District voted to apply \$55,000 toward re-roofing the old Athletic Club building, thus attending to a fundamental requirement for its long-term preservation.

**United States Department of the Interior  
National Park Service****National Register of Historic Places  
Continuation Sheet**Section number 8 Page 1

The founding of Bend at the opening of the 20th century marked the beginning of industrialization in central Oregon. The setting of the townsite platted by A. M. Drake and others between 1901 and 1904 was a raw and unsettled section at a traditional crossing of the Deschutes River. The location was poised between pine forests on the east slope of the Cascade Range and semi-arid rangeland to the east requiring only irrigation to realize its potential for cultivation. The town was incorporated in 1905. With access to a wheat crop and vast timber tracts as a powerful incentive, subsidiaries of the Great Northern and Union Pacific Railroads pushed rail lines into the region by 1911. Thereafter, Bend rose decisively as the principal manufacturing center and seat of Deschutes County government.

Important to the orderly growth of central Oregon's metropolis was The Bend Company, promoter of infrastructure and industrial and real property development in the new town. The company was headed by Clyde M. McKay and D. E. and A. O. Hunter, who acquired land and made lots available for development considered essential to a well-rounded community. Organized in 1911, the company bought out the interests of its predecessor, The Bend Townsite Company founded by A. M. Drake in 1910. The company supported a policy of benevolent sponsorship of educational and civic projects in the public spirit. Among these was the Bend Amateur Athletic Club, which meets registration requirements set forth in the Historic Development of The Bend Company MPS under Criteria A and C.

The property for The Bend Amateur Athletic Club, facing the westerly corner of Block 23, was donated by The Bend Company to The Bend Holding Corporation, May 11, 1917. D.E. Hunter, who served as The Bend Company's vice-president at the time, was a director of the holding company. The Corporation, formed April 19, 1917, was the financial instrument of The Bend Amateur Athletic Club created to take responsibility for the Club's debt. Although most of the \$50,000 required for construction was raised through subscription, a \$15,000 loan was arranged in September 1917. D. E. Hunter presented the Deed to Carl Johnson, president of the Club and vice-president of the holding company, on May 17, 1917. The club-holding company agreed to place a memorial plate bearing the name of A. O. Hunter, Bend Company director who had died in May of 1917, in one of the main rooms of the building as a condition of the transaction. May 30, 1919, the building was formally opened to the community. The property was subsequently conveyed to School District No. 1 in November 1924 to be used as a gymnasium for the proposed high school to be built on the remaining portion of Block 23.

United States Department of the Interior  
National Park Service

National Register of Historic Places  
Continuation Sheet

Section number 8 Page 2

The Bend Amateur Athletic Club Gymnasium in the Deschutes county seat of Bend, Oregon, is a three-story building of locally-manufactured brick on a foundation of native tuff with concrete mortar. As completed and opened for use in 1918, it measured 70 x 114 feet. Its curvilinear gables and English bond brickwork are distinctive characteristics of the Jacobean style, while its Indian athlete plaques and austere facade with inset, polygonal central entrance bay are touches of Arts and Crafts architecture. The building was designed by Lee A. Thomas, best known as a member of the Portland-based firm of Thomas and Mercier, responsible for the Oriental Theatre in Portland (1927) and the Memorial Union at Oregon State University in Corvallis (1928). Lee Thomas subsequently designed the old Bend High School (1925) which stands to the north of the gymnasium. Planned and carried out by the Bend Amateur Athletic Club to serve multifarious community purposes, the gymnasium contained a basement swimming tank and bowling alley, a main floor gymnasium and auditorium space with suspended balconies, and on a partial second story was the lounge-library which served the dual purpose of clubroom and reading room. The attic story was used as a wrestling room. The building was acquired by the Bend School District in 1924, after which time it served as a school gymnasium. In 1938 and 1939, under auspices of the WPA, the gymnasium was enlarged by a 48 x 100-foot, compatible brick heating plant at the east, or rear end.

The Bend Amateur Athletic Club Gymnasium meets National Register criterion "c" as one of the few examples in the state of architecture influenced by the European New Art movement of the turn of the century. The foremost example of this style, rare in Oregon, is Edgar Lazarus's Vista House at Crown Point, a National Register property, which was opened for use on the Columbia River Highway with much fanfare in 1918. The gymnasium also is part of a harmonious local institutional ensemble arrayed along Wall Street, including Reid School, a building constructed of tuff in 1914 which has been listed in the National Register, and the old Bend High School (1925).

The Bend Amateur Athletic Club Gymnasium meets National Register criterion "a" as a phenomenon of boosterism and civic cooperation at a time of dramatic growth for the town, which was platted in 1901 and incorporated as late as 1904. The community developed slowly until it was connected to the Great Northern Railroad system in 1911. There followed at Bend the construction of two large, competing lumber mills: the Shevlin-Hixon Mill, built in 1915, and the Brooks-Scanlon Mill, opened in 1916. In 1915, mill employees and others formed the Bend Athletic Association, forerunner of the Bend Amateur Athletic Club, which was organized in 1917 for the express purpose of building a proper gymnasium. When the Bend Amateur Athletic Club was organized in March 1917, Carl Johnson was its first president. Johnson, cashier for the Shevlin-Hixon Lumber Mill, had been involved previously in Bemidji Athletic Club of Bemidji, Minnesota. The enterprise was paid for entirely through public subscription and donated labor. That the club's 500 members took the responsibility for raising \$50,000 for the construction project is remarkable. It showed that, despite its modest size and recent origin, Bend had the spirit and resources to build a major recreational and social center for the community. When debt for the project was retired in 1919, title to the property was transferred to

United States Department of the Interior  
National Park ServiceNational Register of Historic Places  
Continuation SheetSection number 8 Page 3

the YMCA. The American Legion subsequently took title in 1921 and held the property until it was taken over by the Bend School District in 1924. The Bend Amateur Athletic Club Gymnasium is locally significant as the setting for a wide range of public uses before it became a high school gymnasium. It was used for athletic contests, concerts and dances; it was an auxiliary hospital during the influenza epidemic of 1918; it served as headquarters for the Boy Scouts, a Chautauqua building and an American Legion Hall.

Construction of the gymnasium, supervised by contractor Guy H. Wilson, was commenced in April 1917 with the acquisition of 300,000 bricks from a local brickyard at a cost of \$10 per thousand.

As early as 1910, the village of Bend was exhibiting an intensity of effort to develop its potential that had no rival in central Oregon. Some of the energy stemmed from the infusion into the community life stream of wealthy, young easterners like William D. Cheney and George Palmer Putman. The rails (1911) and the great sawmills (1916) further increased the communal sense that cooperative effort in "boosting" Bend would benefit everyone. A significant illustration of the strength of this drive is marked from 1917 when the Bend Amateur Athletic Club community center gymnasium project was begun. The funds (finally totaling \$50,000) were raised by public subscription, as opposed to tax money, from many sources, including business men, mill executives and employees. In addition, donations of labor were frequent.

Memberships in the athletic association were open to both men and women. Percy A. Stevens, after whom Bend's first American Legion Post was named, was one of the members. He died when the Tuscania was torpedoed off the Irish coast, February 7, 1918. Before the building was opened to the public, it served Bend as auxiliary hospital during the influenza epidemic of 1918. Forty cots were set up on the main floor. On May 30, 1919, the building was formally open for public use. Athletic contests were held there as were public dances. Billy Sunday spoke there on May 3, 1919, in behalf of the last Victory Loan Drive.

In September, 1919, Bend's Commercial Club endorsed a drive to clear the \$35,000 debt. The first subscription, in the amount of \$250.00 came from the Bend Elks. A total of \$39,000 finally was raised, with the Shevlin-Hixon Mill contributing \$15,590 and Brooks-Scanlon \$13,650. Even architect Lee Thomas donated \$300.00. Bend schools were authorized to use the gymnasium for physical training and basketball practices in 1919. In November, the indebtedness being removed, the building was turned over to the YMCA.

Use of the gymnasium by the YMCA, Percy Stevens American Legion Post, Boy Scouts, the Library Association, Bend Women's Civic Club, Lyceum, Chautauqua, and the general public, indicate a broad community involvement. In June, 1921, the building title went to the American Legion. Then, November 1924, the building was turned over the Bend School District No. 1, which has retained ownership to the

**United States Department of the Interior  
National Park Service****National Register of Historic Places  
Continuation Sheet**Section number 8 Page 4

present day. The acquisition of the gymnasium by the School District was a factor which determined selection of the site for construction of the High School, immediately to the north, in 1925.

The architect of both the Bend Amateur Athletic Club Gymnasium and the old High School was Lee Arden Thomas. He was practicing independently at the time of the gymnasium project, whereas by 1925 he was a principal in the firm of Thomas and Mercier. "Thomas was born in Plattsmouth, Nebraska, and was educated in Oregon State College where he received a Bachelor of Science degree in 1907. In 1910 he was graduated from Cornell University with a Bachelor of Architecture degree. He also attended a special course in architecture at Columbia University in New York City. He started practice on the West Coast in the studios of Seattle architects Sommerville and Putman. On moving to Portland, he was associated with A. E. Doyle and subsequently spent three years on the architectural staff of the Portland School District before launching private practice in 1913. When, in 1919, the Oregon Architects Registration Law was enacted, Lee Thomas had the distinction of being named by Governor Ben W. Olcott to the original State Board of Architect Examiners."<sup>1</sup>

The firm of Thomas and Mercier, formed in 1924, is probably best known for its design of the Union Memorial Building on the campus of Oregon State University in Corvallis. Completed in 1928 and of 20th century Classical design, the building was widely acclaimed upon its completion and brought the firm into prominence.

<sup>1</sup> Walton, Elisabeth, "The Oriental Theater," unpublished photo-data report for the Historic American Buildings Survey selection titled "Ten Early 20th Century Theatres: Nickelodeon to Movie Palace, 1910-1931," 1970-2, page 6.







Lacc. clat. Brn. Ore.