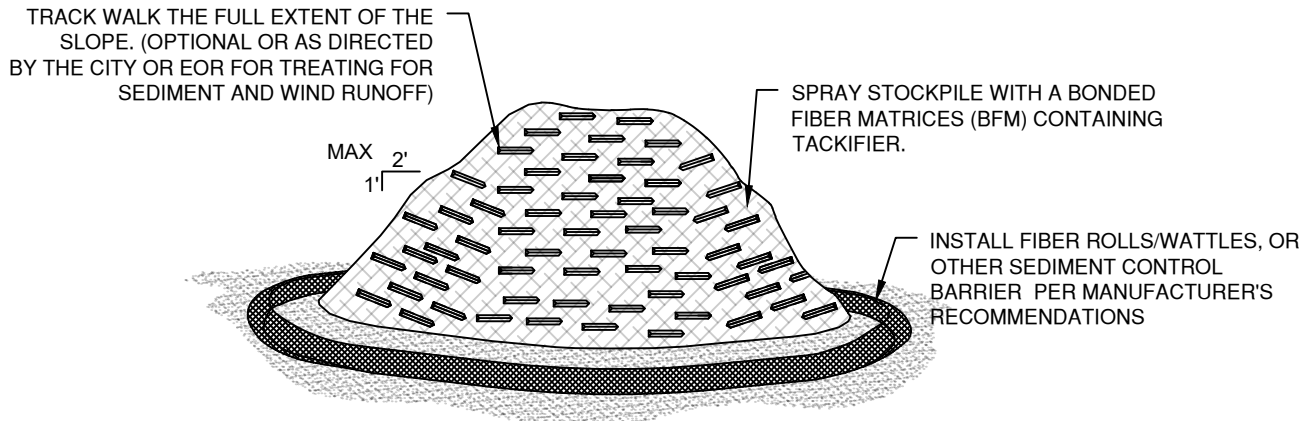


TEMPORARY STOCKPILE STABILIZATION

NTS



PERMANENT STOCKPILE STABILIZATION

NTS

NOTES:

TEMPORARY STOCKPILE STABILIZATION:

1. INSTALL PLASTIC SHEETING VERTICALLY DOWN SLOPE.
2. INSTALL PLASTIC SHEETING SO EDGES OVERLAP AND ARE SHINGLED AWAY FROM PREVAILING WINDS.
3. PLASTIC SHEETING SHOULD ONLY BE UTILIZED AS REQUIRED BY THE CITY WHERE OTHER METHODS OF STOCKPILE STABILIZATION HAVE NOT PERFORMED.

INSPECTION AND MAINTENANCE:

1. INSPECT WEEKLY AND DAILY DURING STORM EVENTS
2. REPLACE TORN SHEETS AND REPAIR OPEN SEAMS.
3. COMPLETELY REMOVE ALL PLASTIC AND REPLACE WHEN IT BEGINS TO DETERIORATE.
4. COMPLETELY REMOVE PLASTIC WHEN IT IS NO LONGER NEEDED.
5. CHECK ANCHORING SYSTEMS AND REPAIR OR ADD ANCHORS.
6. VERIFY EFFECTIVE FUNCTION OF BMP AT TOE OF SLOPE.

DRAWN CJH
DIV EROSION
REV DATE



CITY OF BEND

CITY OF BEND

STANDARD DRAWING

710 NW WALL ST., BEND, OREGON 97701

STOCKPILE STABILIZATION

SCALE NTS

DATE 11/01/2024

APPR

STD DWG E-5