

OVERTURF BUTTE

BARK BEETLE TREE REMOVAL PROJECT

The Pine Engraver Beetle on Overturf

*The City of Bend working in conjunction with
Bend Park & Recreation, OSU Extension Office and Oregon Department of Forestry*

Through a cooperative intergovernmental effort, the bark beetle (*Ips pini*) or Pine Engraver Beetle has been identified as the source of the brown limbs and tree tops at and around Overturf Butte. Significant damage is already visible on private property and the public land.



The City of Bend and the Bend Park and Recreation District will work collaboratively on the butte to remove dead or dying infested trees.

Onsite preparations for tree removal will begin as soon as the season allows. Signs will be posted regarding the closure of trails and the dog park. Contractors will begin work as soon as it is safe with a finish date expected within about 4-5 days from start to finish. Affected trees will be chipped on site which will kill the beetles and larvae. The chips will be spread to improve the forest ecosystem.

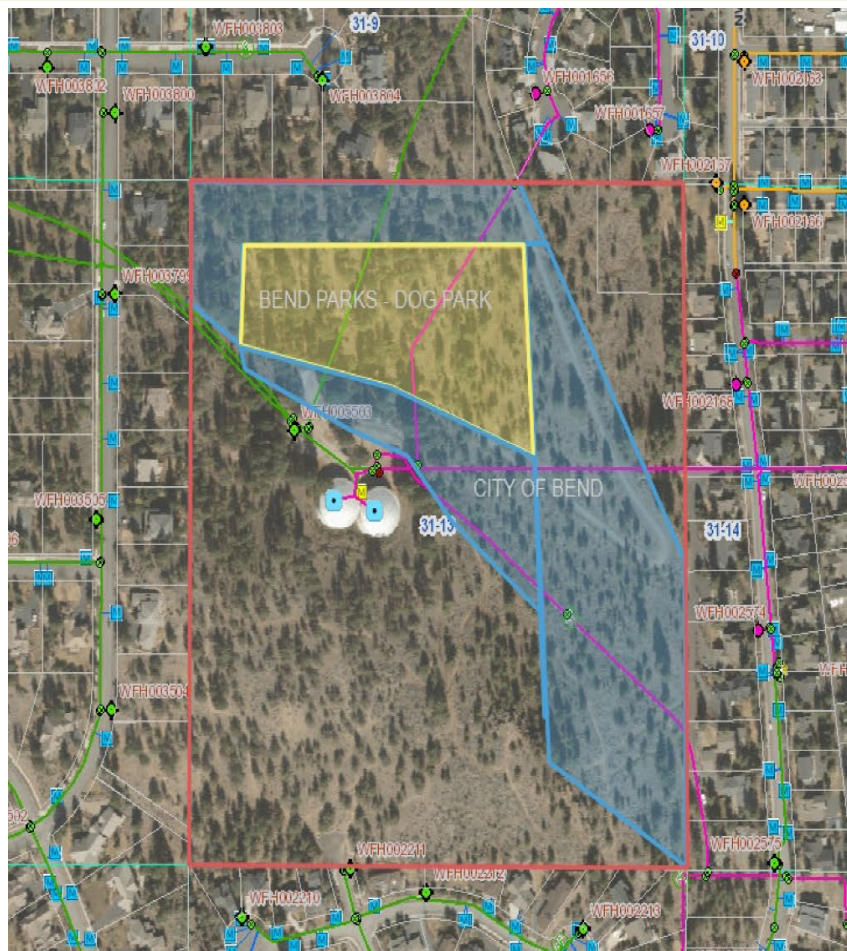


About the Beetle:

Beetles bore into the tree bark and laid eggs, introducing a blue stain fungus into the sapwood that prevents the tree from repelling and killing the attacking beetles with tree pitch. The fungus also blocks water and nutrients from the tree. Affected trees will remain green at first and then generally turn red within a year, indicating they are dead or dying. Beetles then move to another healthy tree to infest. And the destructive life-cycle continues.



UTILITY DEPARTMENT



Why did these trees get beetles?

Bark beetles frequently attack trees that are stressed. This could be caused by drought, disease, injuries, or competition for the sun, water and space from other trees. Over the past three years (excluding 2017) the high desert has experienced drought conditions. Overturf Butte is a dry site with shallow soils, dense tree populations with urbanization nearby. It is a perfect scenario for bark beetles.

Do you have beetles on your property?

Signs of beetles may include brown needles, bore sites, bark dusting and beetles under the bark. Call an arborist for tree removal or other options.

What's the plan?

As soon as weather permits, a local contractor will be onsite to remove and chip the trees. The chips will be left on the butte to work back into the forest ecosystem, adding nutrients. Chemical sprays will not be used since the forested area is close to homes, children, and pets.

During this time the Overturf Butte trails will be closed for safety purposes.

This includes:

- Cascade Highlands Trail East of Skyliner Summit Loop
- Connector trail from the Overturf neighborhood park on NW 17th Street
- Connector trail from NW Flagline Drive

Overturf Butte Reservoir Off-Leash Area will be closed for the duration of the removal period.

Overturf neighborhood park on NW 17th Street will only be closed when tree removal is being conducted in the immediate area.



"In short, the best way to manage for bark beetles is to do exactly what is being done, remove infested trees, manage slash and thin the leave trees to ensure their future resiliency."

- Christine Buhl,
Forest Entomologist,
ODF

For more information, please contact Mike Edwards, City of Bend 541-317-3050 or medwards@bendoregon.gov.



Accommodation Information for People with Disabilities
To obtain this information in an alternate format such as Braille, large print, electronic formats and audio cassette tape, please contact 541-317-3000 opt. 2 or email at utilities@bendoregon.gov.