



CITY OF BEND

TRUAC Meeting #3

Renee Brooke, Planning Manager

Pauline Hardie, Senior Planner

July 27, 2023

Agenda

1. Roll Call
 2. Declaration of Actual or Potential Conflicts
 3. Regulated Tree Size Requirement for Inventory and Mapping
 4. Needed Housing Considerations
 5. Regulated and Priority Tree Preservation Standards
4. Next Steps – TRUAC meeting August 17, 3-5 P.M.



Council Direction

1. Provide consistency between BMC Chapter 16.10, Clearing, Grading, and Erosion Control on Construction Sites, BDC Chapter 3.2, Landscaping, Street Trees, Fences and Walls and City of Bend Standards and Specifications Chapter 12, Landscape Architecture and Irrigation Systems
2. Provide clear and objective tree preservation standards for the development of housing, including needed housing, and include an optional discretionary process for applicants for development;
3. **Consider preservation standards for larger trees similar to the Southeast Area Plan;**
and
4. Consider alternatives to preserving trees, including tree replacement and a fee-in-lieu of preservation for the purpose of developing and protecting the City's urban tree canopy.
5. Identify tree inventory programs to support preserving and expanding Bend's urban tree canopy.



Regulated Tree Size Requirement for Inventory and Mapping



Trees to be Regulated (inventoried & mapped)

Option	Deciduous	Coniferous	
		Juniper	Non-Juniper
1 (Current BDC)	6"	10"	10"
2	6"	12"	10"



Needed Housing Considerations

Regulated and Priority Tree Preservation Standards

Priority Tree Size

Options	Deciduous	Coniferous	
		Juniper	Non-Juniper
1 (Current BDC)	6"	10"	10"
2	20"	20"	20"
3	24"	24"	24"



Trees 20" and 24" or Greater

	Gateway Multi-Unit 9.34 Acres	Sky Vista Single-Unit 9.13 Acres	Poplar Single-Unit 0.54 Acres	Century Mixed-Use 1.50 Acres	Veridian Multi-Unit 2.81 Acres
Total Trees	67	94	45	53	60
Total DBH	1,108	1,739	715	897	912
Trees 20" +	9	30	12	14	14
Trees 24" +	4	20	4	8	11



Sky Vista



20"



24"

50

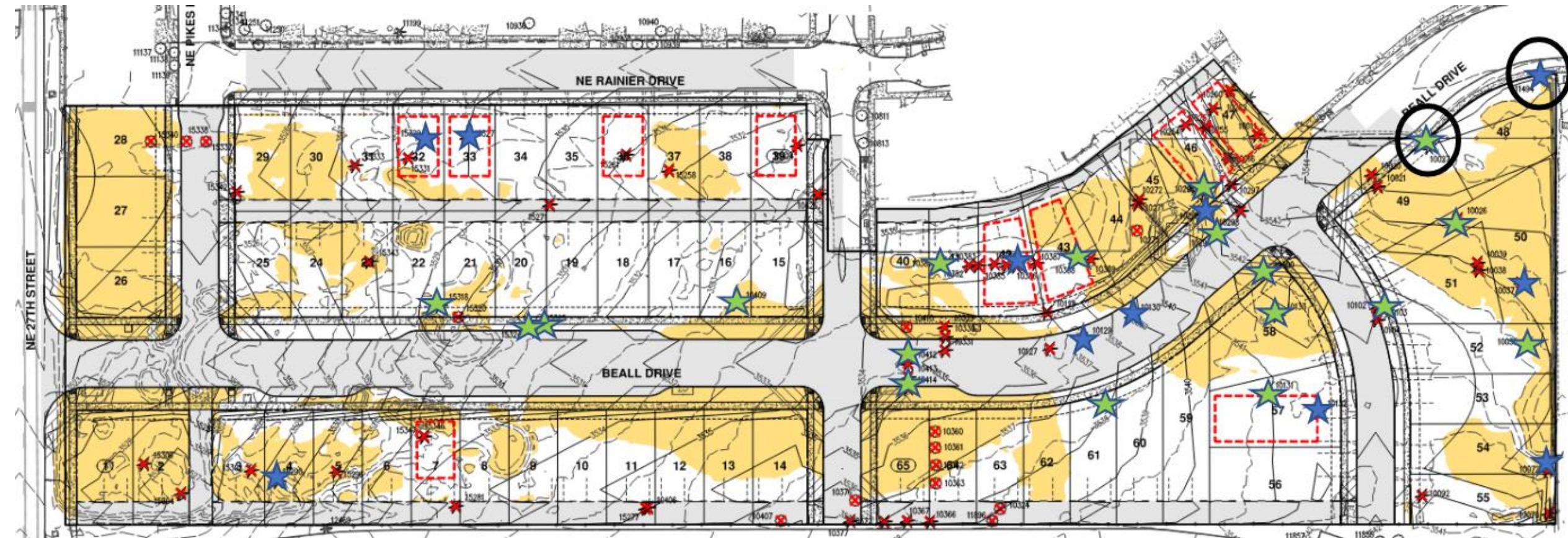
Junipers

20

Deciduous and Maples

24

Pines and Evergreens



Sky Vista 94 Trees

20" STUDY

- 1,739 Total DBH
- 30 trees 20" or greater

Requirement	Option 1	Option 2	Option 3
DBH required	347.8	434.75	521.7
# of trees 20" or greater	30	23	15
Approximate DBH Needed	-414.2	-136.75	140.7

24" STUDY

- 1,739 Total DBH
- 20 trees 24" or greater

Requirement	Option 1	Option 2	Option 3
DBH required	347.8	434.75	521.7
# of trees 24" or greater	20	15	10
Approximate DBH Needed	-200.2	23.75	247.7



Veridian Apartments

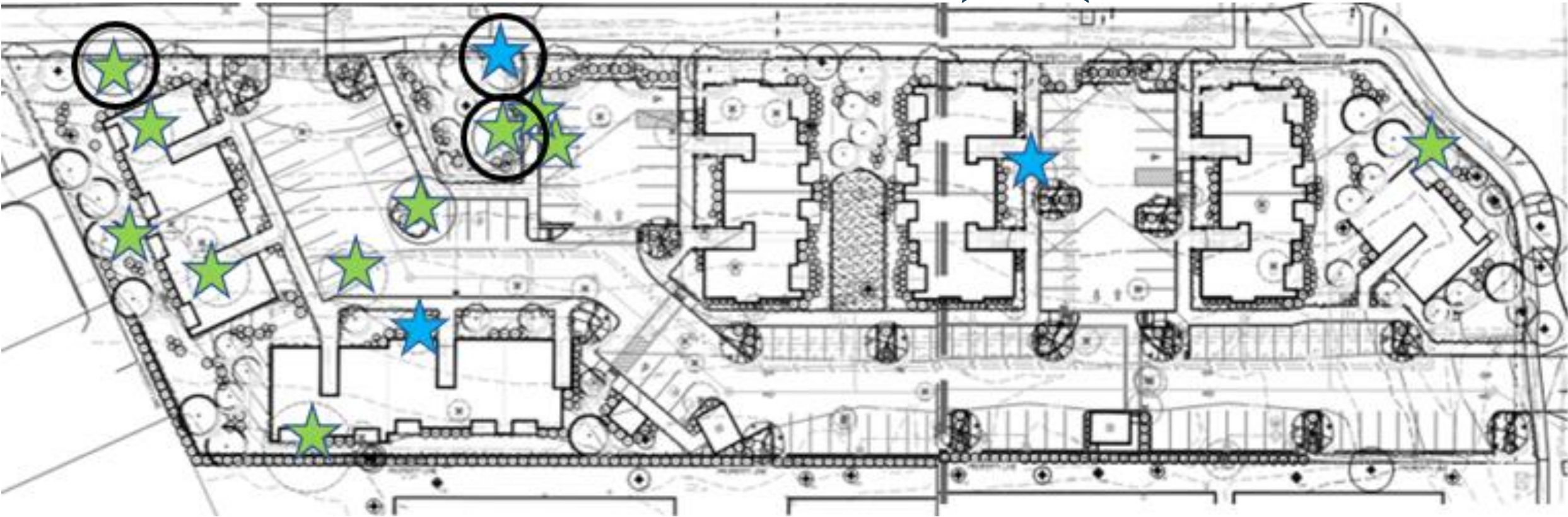


20"



24"

Junipers 48
Ponderosas 12



CITY OF BEND

Veridian Apartments

60 Total Trees

20" STUDY

- 912 Total DBH
- 14 trees 20" or greater

Requirement	Option 1	Option 2	Option 3
DBH required	182.4	228	273.6
# of trees 20" or greater	14	11	7
Approximate DBH Needed	-191.6	-52.5	86.6

24" STUDY

- 912DBH
- 11 trees 24" or greater

Requirement	Option 1	Option 2	Option 3
DBH required	246.8	308.5	370.2
# of trees 24" or greater	11	8	6
Approximate DBH Needed	-131.6	-7.5	116.6



Priority Trees (assume to be preserved)

Options	Deciduous	Coniferous	
		Juniper	Non-Juniper
1 (Current BDC)	6"	10"	10"
2	20"	20"	20"
3	24"	24"	24"



Accommodation Information for People with Disabilities



To obtain this information in an alternate format such as Braille, large print, electronic formats, etc. please contact [Project Manager or Document Creator] at [email] or [telephone number]; Relay Users Dial 7-1-1.

