

Bend Police Department Quarterly Report — Q1



Multiagency Traffic Enforcement Detail

Over a three-day period in mid-March, the Bend Police Department and five Central Oregon law enforcement agencies combined efforts in a multiagency traffic enforcement detail.

The detail targeted high-traffic areas in Bend, Redmond, Black Butte, Sunriver and rural Deschutes County, and focused on speed, intoxicated and distracted driving, as well as unsafe driving behaviors such as illegal passing and not wearing seatbelts.

Over the course of the detail, 36 officers participated, making more than 380 traffic stops. More than 170 of those stops resulted in at least one traffic citation.

The majority of the stops were initiated because of excessive speed. At least 17 people who were stopped had no driver's license. We even recovered a stolen motorcycle!

These types of events allow our agencies to saturate the area and can serve as a valuable reminder to drivers to obey the rules of the road. Traffic safety is one of our community's top priorities—we hear in emails, surveys and conversations how concerned Bend residents are with the driving behaviors they witness on the roads each day.

We ask our community to slow down, put down your phone, and give the cars around you plenty of space. You're not just keeping yourself safe — you're protecting the people around you, too.



SIGN UP FOR CONNECT BEND

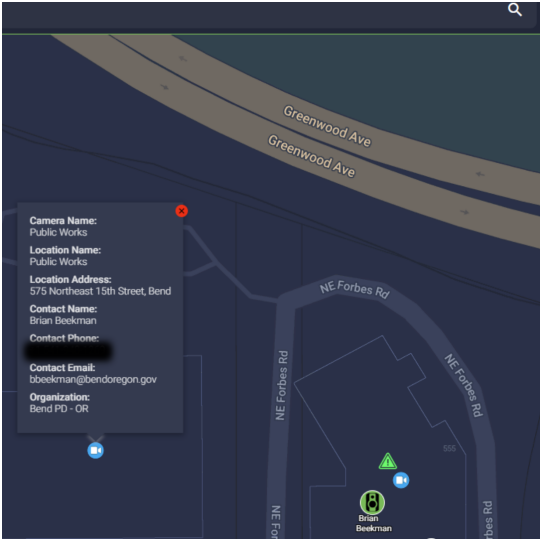
The City of Bend Police Department has launched CONNECT BEND, a community camera registry designed to leverage existing privately owned camera systems throughout our community to help officers respond to incidents more quickly and effectively.

Using technology from Fusus, Bend Police will use the registry to create an interactive map of existing security cameras in Bend, increasing the efficiency with which officers collect video evidence. The interactive map is accessible only to authorized Bend Police users, and allows our officers to contact camera owners and request footage when necessary. You can unsubscribe, change or delete your information from the registry at any time.

Our officers already canvass areas for useful video footage when a crime occurs in an area. This program allows our agency to streamline the process.

Registering your existing cameras takes less than a minute through a secure online portal, and is completely free. If you choose to register your camera, it does not allow the Bend Police Department access to your live video stream. Instead, it lets investigators know that there is a camera present at your location so they can request video evidence if an incident occurs in your area.

To learn more or register your cameras, go to www.bendconnect.org.



SPIDR TECH RESULTS, JAN. 1, 2025 THROUGH MARCH 27, 2025

Bend Police uses a service called SPIDR Tech that follows up with the people who have contact with our officers to measure their level of satisfaction with our service. Below are the results from the first quarter of 2025.

<div>THE OFFICER LISTENED TO ME.</div> <div>4.80 OF 5</div> <div>FROM 435 RESPONSES</div>	<div>THE OFFICER TREATED ME WITH RESPECT.</div> <div>4.86 OF 5</div> <div>FROM 434 RESPONSES</div>
<div>THE OFFICER TREATED ME FAIRLY.</div> <div>4.82 OF 5</div> <div>FROM 433 RESPONSES</div>	<div>THE OFFICER COMMUNICATED CLEARLY.</div> <div>4.84 OF 5</div> <div>FROM 434 RESPONSES</div>
<div>THE OFFICER PROVIDED USEFUL INFORMATION.</div> <div>4.65 OF 5</div> <div>FROM 434 RESPONSES</div>	<div>THE OFFICER HELPED RESOLVE THE PROBLEM.</div> <div>4.39 OF 5</div> <div>FROM 433 RESPONSES</div>
<div>OVERALL, HOW SATISFIED WERE YOU WITH BPD'S RESPONSE TO YOUR RECENT CALL?</div> <div>4.62 OF 5</div> <div>FROM 434 RESPONSES</div>	

CONTACT US

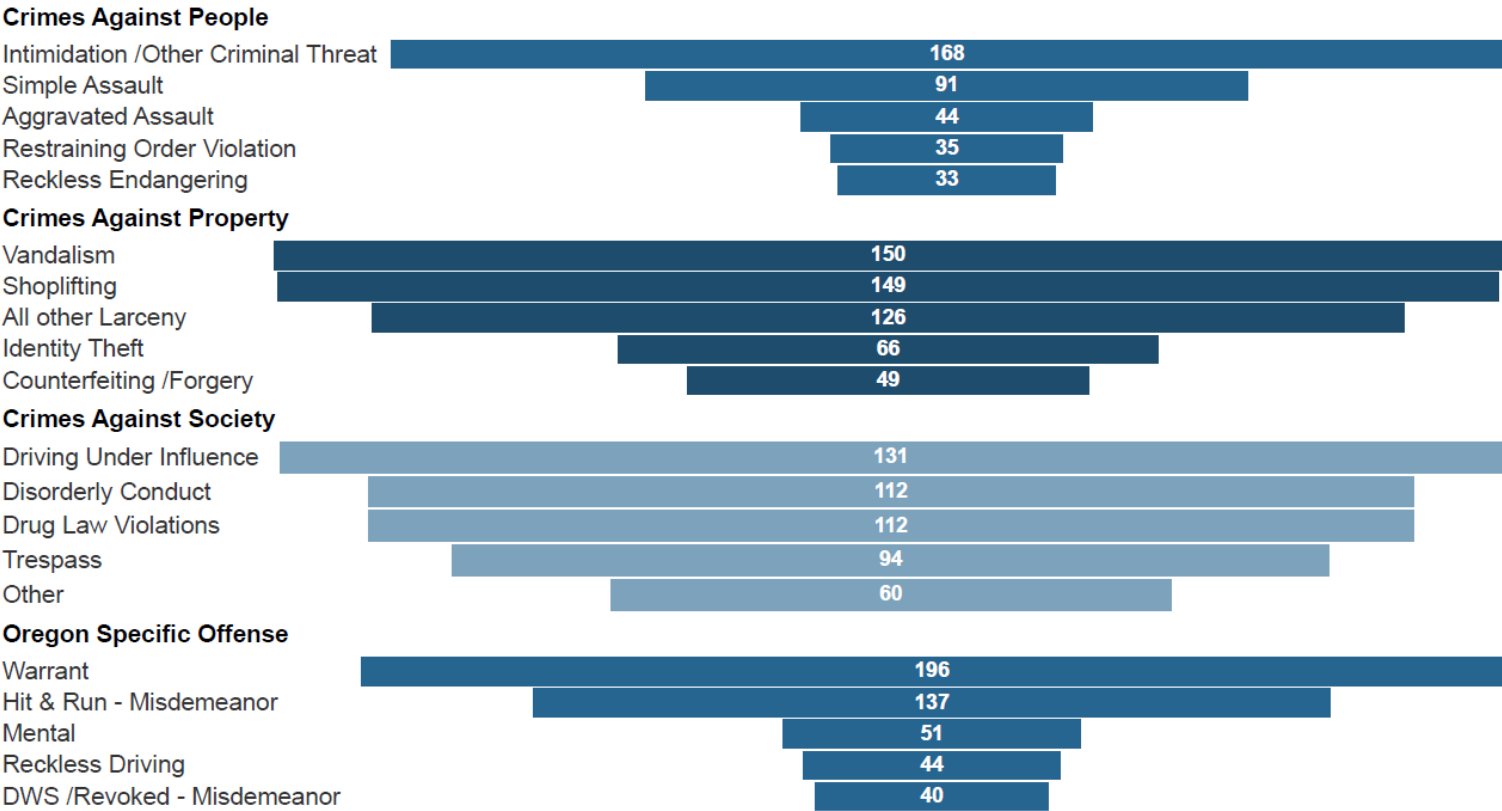
541-322-2960
police@bendoregon.gov
www.bendoregon.gov/police

555 NE 15th Street,
Bend OR 97702

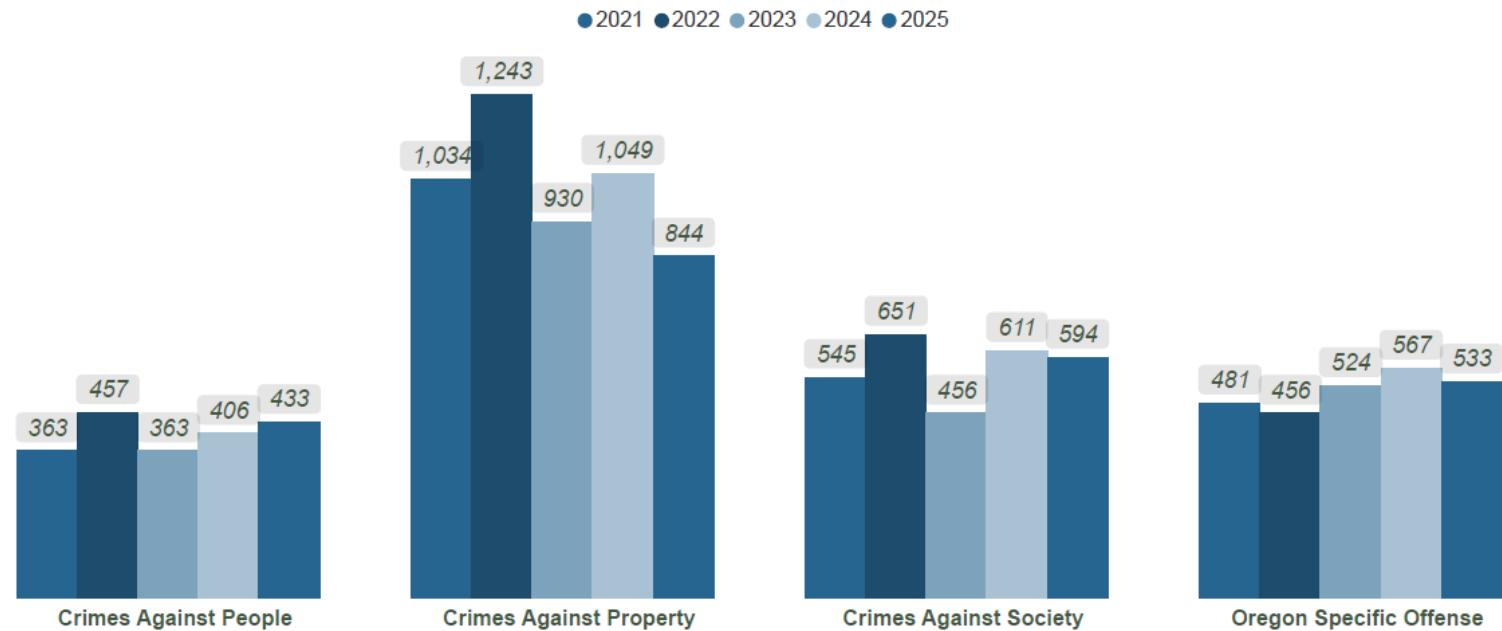
Bend Police Department Quarterly Statistics



Top Offenses by Crime Category



Year-to-Date Offenses by Crime Category

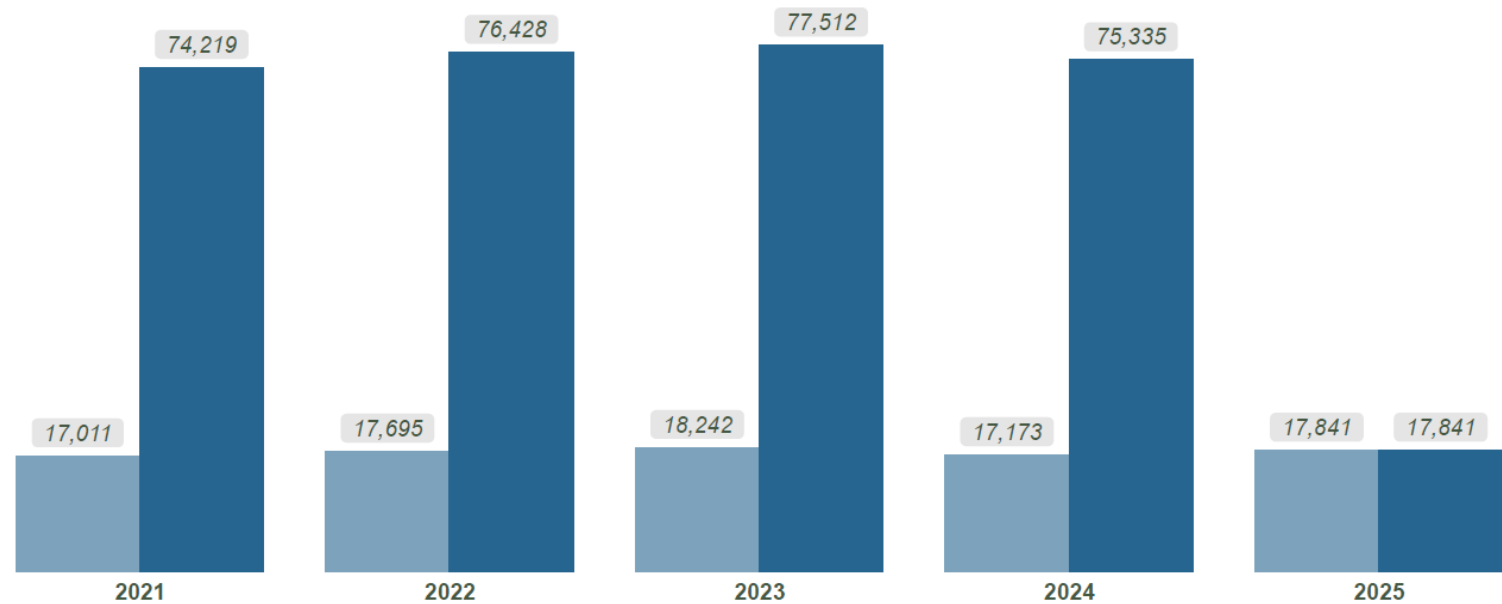


Bend Police Department Quarterly Statistics



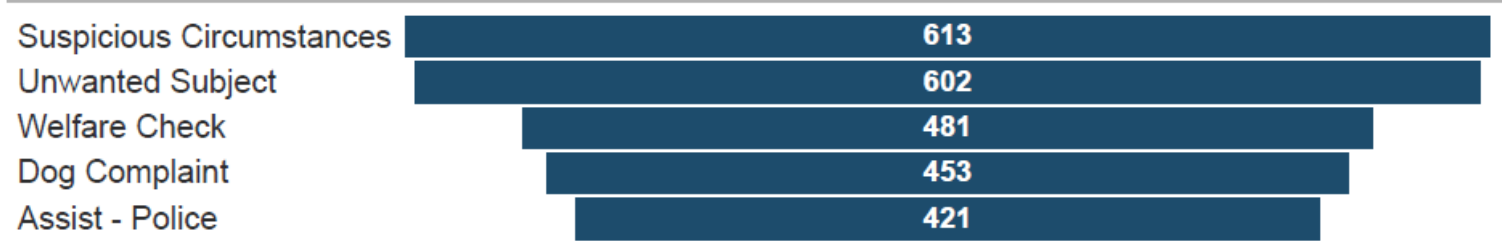
Total Calls for Service

Previous Year-to-Date CFS Count



Top Community-Initiated Calls

Excludes C6 Follow-Up calls, which are calls where officers are following-up on previous reports.



Top 911 Calls

