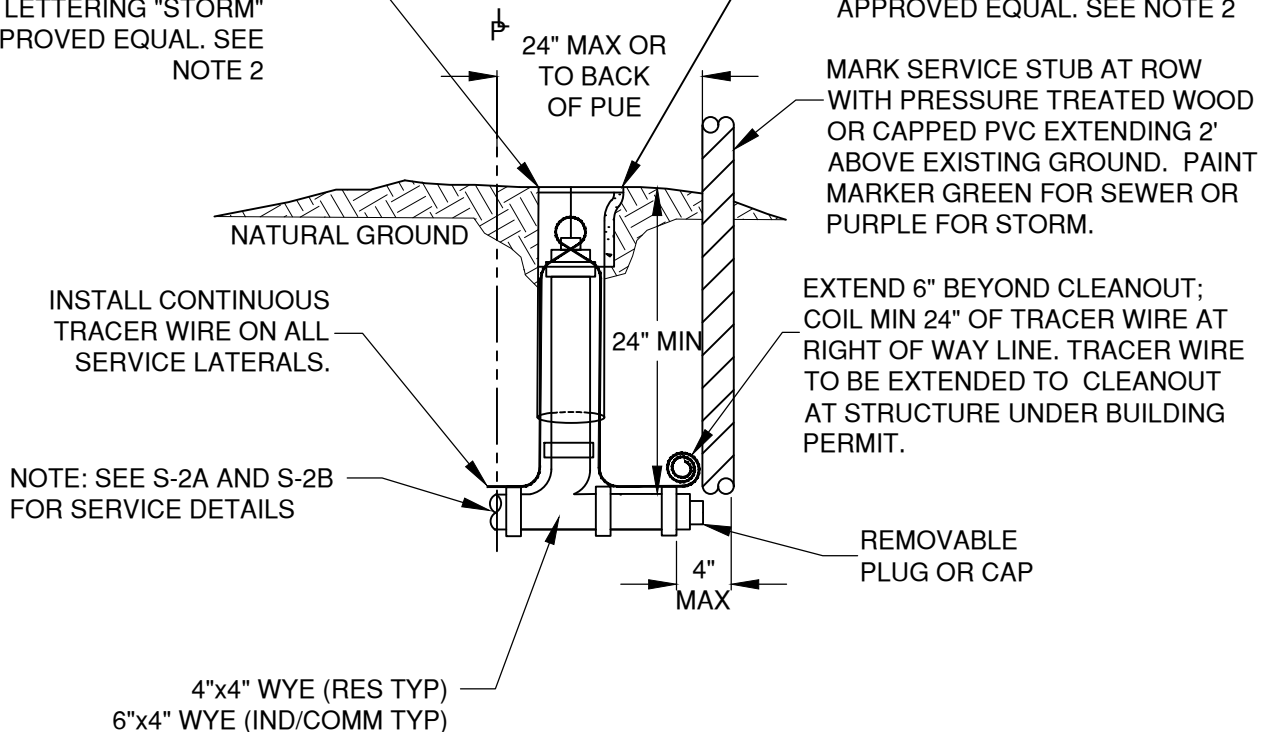


STORM: 4" CLEANOUT, USE
6" C900 VERTICAL STAND
PIPE (MIN. 18" LENGTH)
WITH CAST IRON LID WITH
CAST LETTERING "STORM"
OR APPROVED EQUAL. SEE
NOTE 2

SEWER: 4" CLEANOUT, USE 6" C900
VERTICAL STAND PIPE (MIN. 18"
LENGTH) AND CAST IRON LID WITH
CAST LETTERING "SEWER" OR
APPROVED EQUAL. SEE NOTE 2



NOTES:

1. SEE STD DWG S-2A FOR GENERAL NOTES.
2. INSTALL CONCRETE BROOKS BOX WITH
CAST IRON LID ON ALL CLEANOUTS
WITHIN HARDSCAPE.

DRAWN AJD	
DIV SANITARY	
REV	DATE



CITY OF BEND

CITY OF BEND

STANDARD DRAWING

710 NW WALL ST., BEND, OREGON 97701

GRAVITY SEWER/STORM CLEANOUT

SCALE NTS

DATE 03/22/2023

APPR

STD DWG S-2C