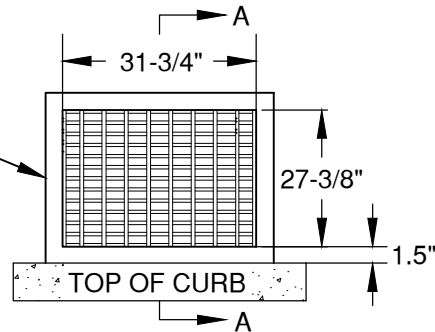
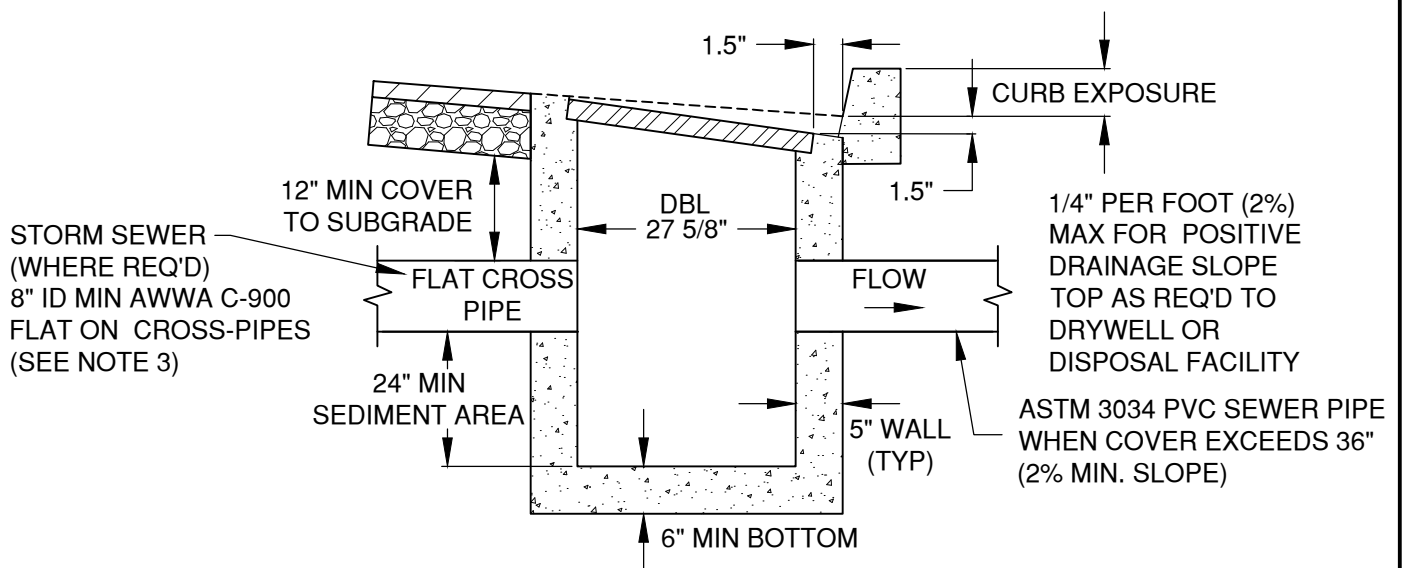


DETAIL SHOWING
GRATE ORIENTATION
TO CURB LINE. SEE
STD DWG STRM-13A
FOR GRATE DETAIL



PLAN VIEW



SECTION A-A

NOTES:

1. UNLESS OTHERWISE SPECIFIED, ALL CATCH BASINS TO BE DOUBLE CATCH BASIN
2. BACKFILL TO BE COMPACTED TO 95% OF OPTIMUM PER SPECIFICATION SECTION 00330.43
3. CROSS PIPE ELEV MAY REQUIRE OTHER UTILITIES (SEWER, WATER, ETC) TO BE LOWERED TO PROVIDE MINIMUM SEPARATIONS
4. ALL PIPE CONNECTIONS TO BE GROUTED PER SPECIFICATION SECTION 00470.40
5. CONTRACTOR IS RESPONSIBLE TO KEEP CATCH BASIN CLEAN AND FREE OF SEDIMENT DURING CONSTRUCTION
6. CONTRACTOR IS RESPONSIBLE TO COVER AND BARRICADE ALL CATCH BASINS UNTIL GRATE IS INSTALLED
7. STANDARD CATCH BASINS ARE LIMITED TO LOCAL STREETS AND SHALL NOT BE USED ON ARTERIAL & COLLECTOR ROADWAYS. CURB INLETS ARE TO BE USED ON ARTERIAL & COLLECTOR ROADWAYS.
8. SEE DRG R-11 FOR PAVEMENT RESURFACING

DRAWN		AJD	CITY OF BEND STANDARD DRAWING 710 NW WALL ST., BEND, OREGON 97701	SCALE	NTS
DIV		STORM		DATE	03/22/2023
REV	DATE			APPR	
				STD DWG	STRM-12
			STANDARD CATCH BASIN		