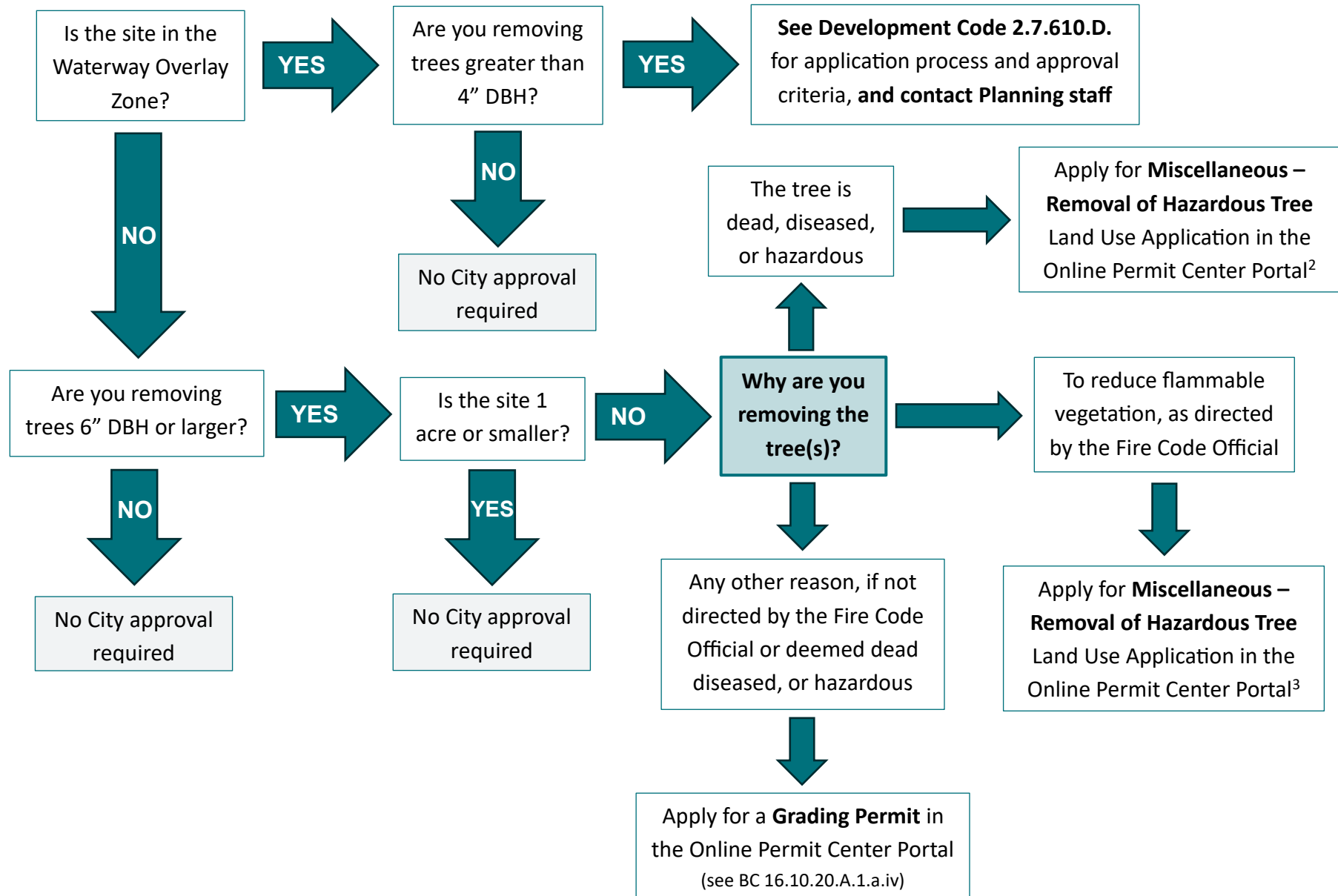




CITY OF BEND
COMMUNITY DEVELOPMENT

Tree Removal Requirements on Residential Sites¹ – With No Development Proposed



¹ A site with one or more existing dwelling units, micro-units, or SROs.

² Although exempt from a Grading Permit (BC 16.10.020.A.1.n) and Tree Performance Standards (BC 16.40.020.A), we still need a mechanism for the Planning Manager to approve the request (BC 16.40.020.A.4).

³ Although exempt from a Grading Permit (BC 16.10.020.A.1.n) and Tree Performance Standards (BC 16.40.020.A), BC 16.40.030 requires Planning Manager approval.