



WELCOME

to the



Neff Pedestrian and Bicycle Improvements Project Pre-Construction Information Booth


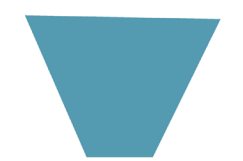



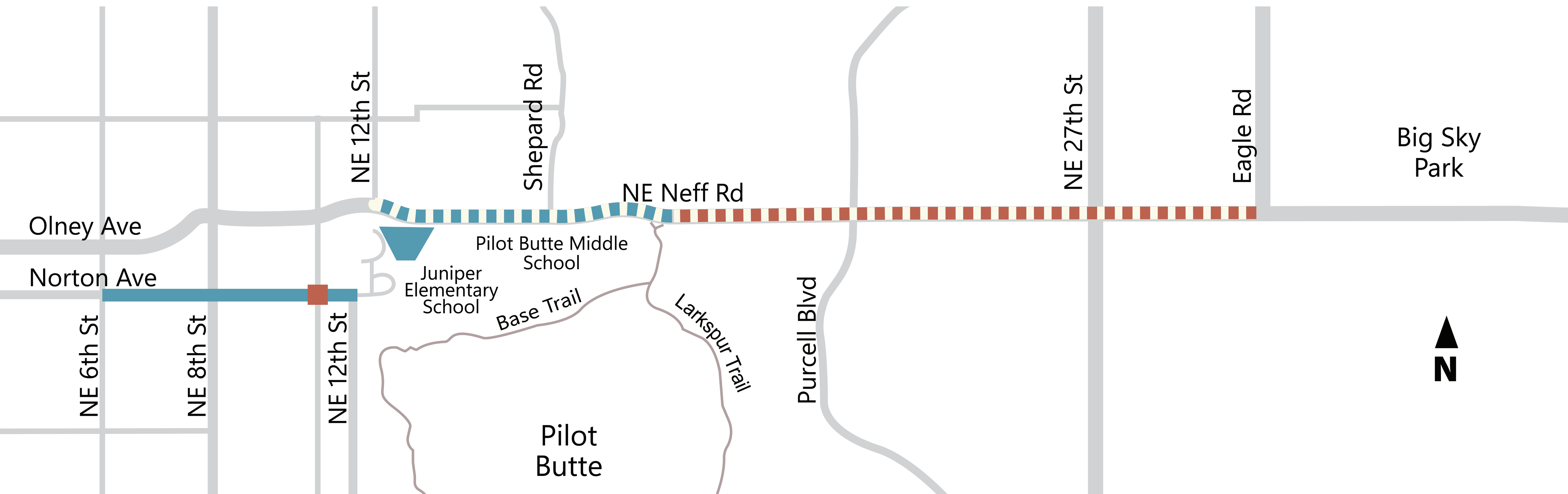
PROJECT CONSTRUCTION AREA MAP



CITY OF BEND

-  = Shared Use Path - PH 1 - BEGINS EARLY JUNE
-  = Curb Extensions - PH 1 - ADDITION

-  = Shared Use Path - ODOT - DATE TBD
-  = Hillside Trail Improvements - ODOT - DATE TBD
-  = Neighborhood Greenway - ODOT - DATE TBD



PHASE 1 TIMELINE AND CONSTRUCTION

WHAT TO EXPECT DURING CONSTRUCTION

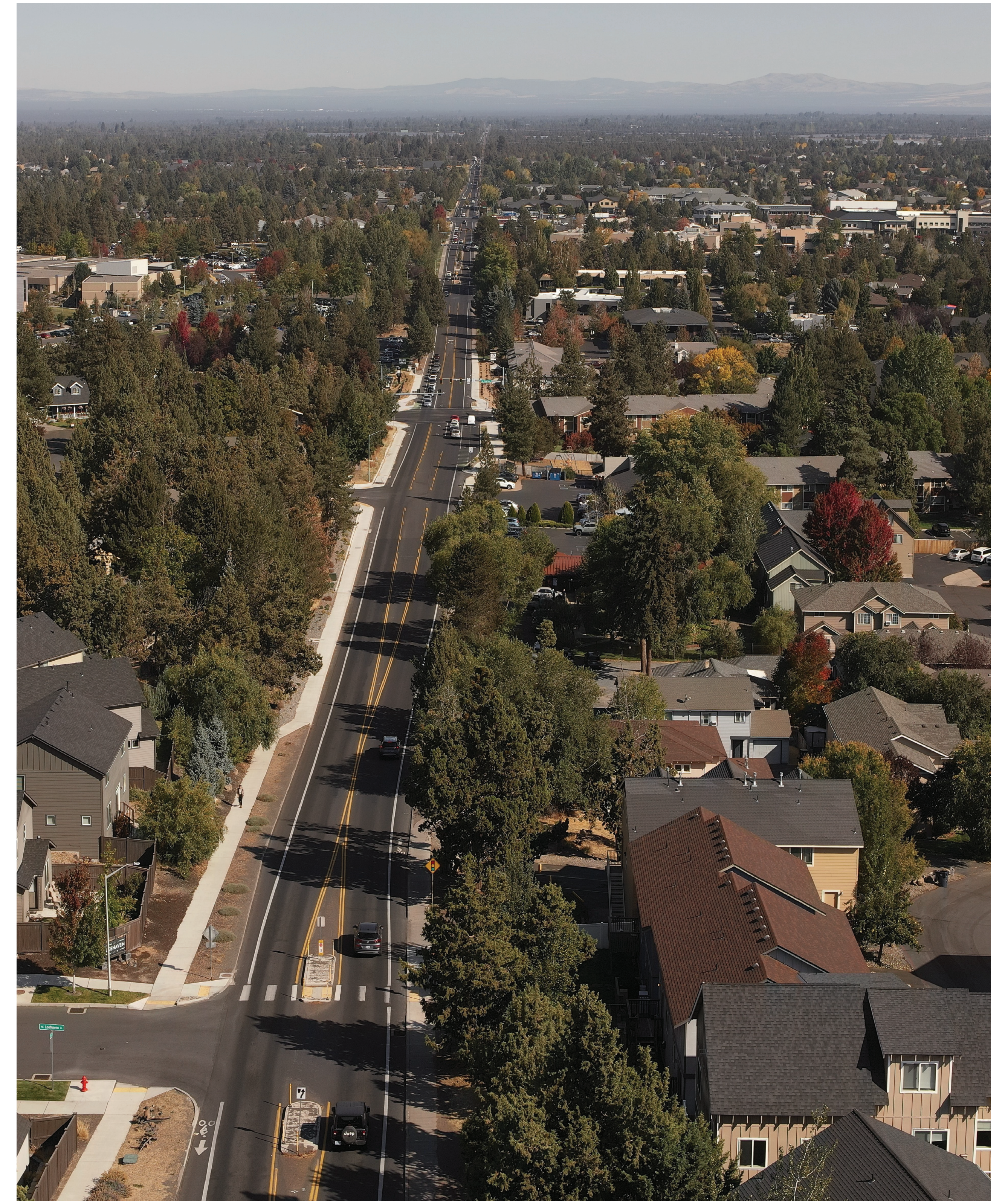
- Roadway shoulder work
- Temporary lane shifts and periodic flagging
- Minor delays
- Temporary bus stop changes
- Access remains open to all businesses
- Two-way traffic will be maintained

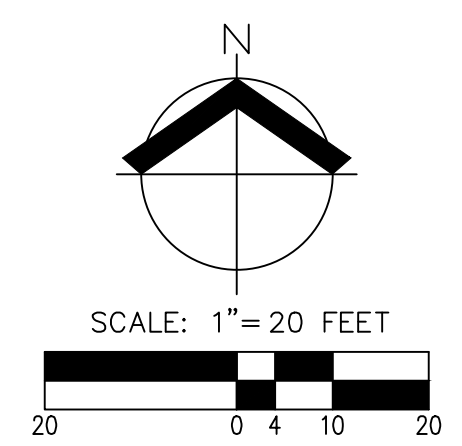
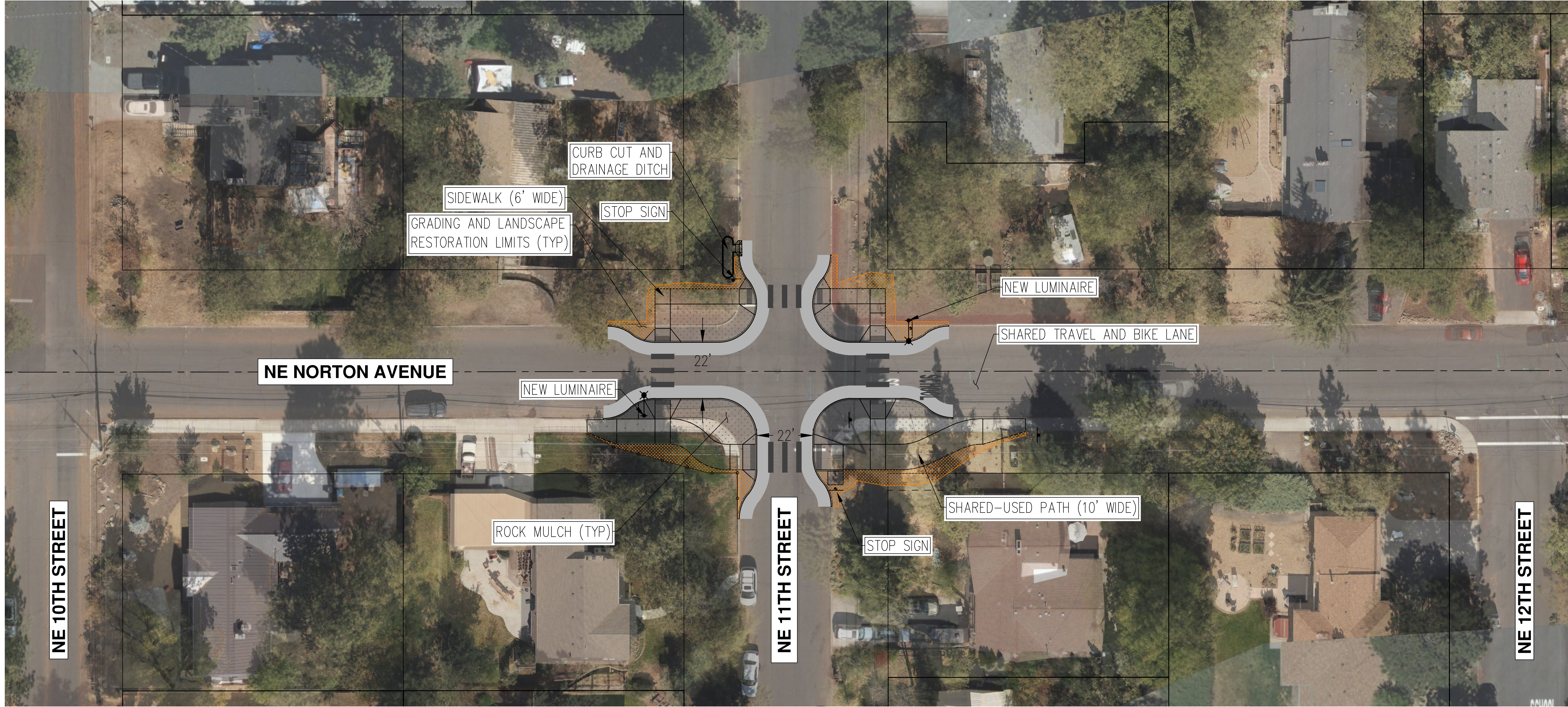
PHASE 1 CONSTRUCTION SCHEDULE

- Construction begins early June 2026
- Estimated completion of Phase 1 - Summer 2027

Dates are estimates and subject to change.

Dates of future phases of construction are to be determined.





DESIGN NUMBER
1GNCI

SHEET
1

NE NORTON AVE & NE 11TH ST

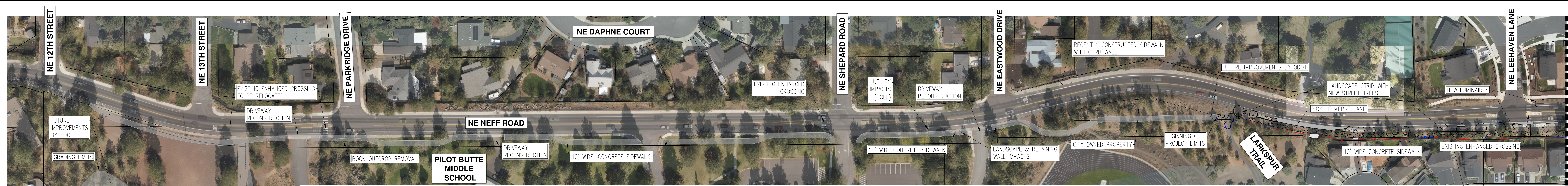
NEFF PEDESTRIAN AND BICYCLE IMPROVEMENTS PROJECT

CITY OF BEND

AKS ENGINEERING & FORESTRY, LLC
2777 NW LOLO DR, STE 150
BEND, OR 97703
541.317.8429
WWW.AKS-ENG.COM

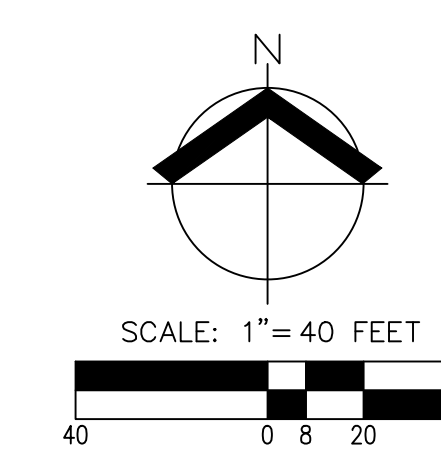


ENGINEERING · SURVEYING · NATURAL RESOURCES
FORESTRY · PLANNING · LANDSCAPE ARCHITECTURE



MATCHLINE - SEE BELOW

MATCHLINE - SEE SHEET 3

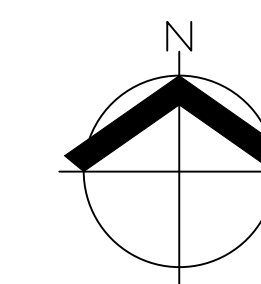
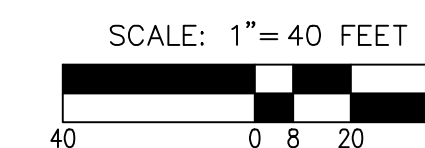


DESIGN NUMBER
1GNCI
SHEET
2

**NEFF ROAD
12TH ST - PURCELL BLVD**

**NEFF PEDESTRIAN AND BICYCLE IMPROVEMENTS PROJECT
CITY OF BEND**

AKS ENGINEERING & FORESTRY, LLC
2777 NW GOLD DR., STE 150
BEND, OR 97703
541.317.8429
WWW.AKS-ENG.COM
AKS
ENGINEERING - SURVEYING - NATURAL RESOURCES
FORESTRY - PLANNING - LANDSCAPE ARCHITECTURE



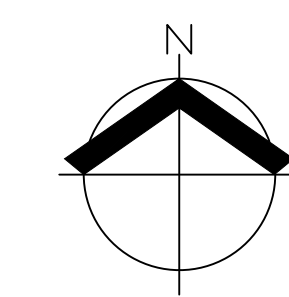
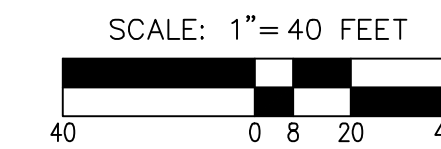
DESIGN NUMBER
1GNCI
SHEET
3

**NEFF ROAD
PURCEL BLVD - 27TH ST**

**NEFF PEDESTRIAN AND BICYCLE IMPROVEMENTS PROJECT
CITY OF BEND**

AKS ENGINEERING & FORESTRY, LLC
2777 NW GOLD DR., STE 150
BEND, OR 97703
541.317.8429
WWW.AKS-ENG.COM

AKS
ENGINEERING - SURVEYING - NATURAL RESOURCES
FORESTRY - PLANNING - LANDSCAPE ARCHITECTURE



DESIGN NUMBER
1GNCI
SHEET
4

**NEFF ROAD
27TH ST - EAGLE RD**

**NEFF PEDESTRIAN AND BICYCLE IMPROVEMENTS PROJECT
CITY OF BEND**

AKS ENGINEERING & FORESTRY, LLC
2777 NW GOLD DR., STE 100
BEND, OR 97703
541.317.8429
WWW.AKS-ENG.COM

AKS
ENGINEERING - SURVEYING - NATURAL RESOURCES
FORESTRY - PLANNING - LANDSCAPE ARCHITECTURE